



Supplementary Information

Rietveld Method in the Analysis of Polymorphism in Mebendazole Tablets Acquired in Brazil's Drugstores

Simone T. B. Salvi,^{*,a} Selma G. Antonio,^a Fabio F. Ferreira^b and Carlos O. Paiva-Santos^a

^aDepartamento de Físico-Química, Instituto de Química, Universidade Estadual Paulista (UNESP), R. Prof. Francisco Degni, 55, Quitandinha 14800-060 Araraquara-SP, Brazil

^bCentro de Ciências Naturais e Humanas (CCNH), Universidade Federal do ABC (UFABC), Av. dos Estados, 5001, 09210-580 Santo André-SP, Brazil

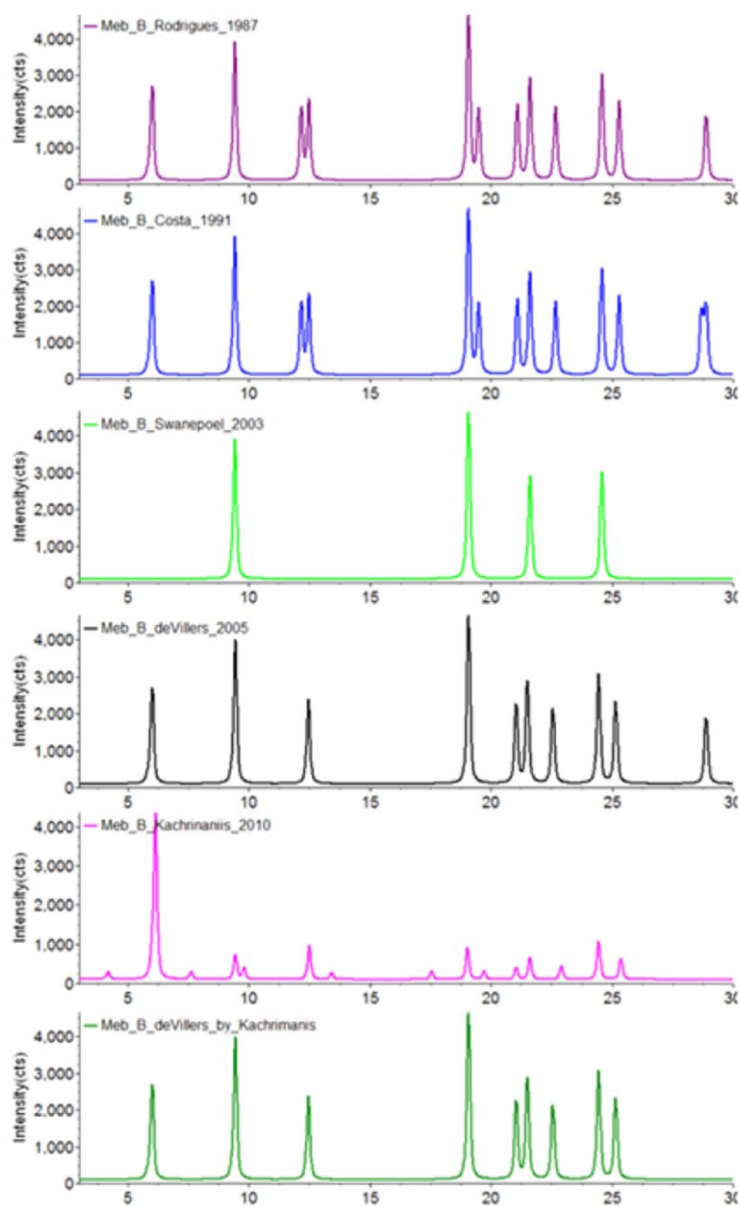
Table S1. Excipients of each medicament that were declared by the manufacturer on the package insert

	R-01	R-02	G-01	G-02	G-03	G-04	G-05	S-01	S-02
Banana flavor					X				
Colloidal silicon dioxide	X				X				
Colorant CI No. 15985		X							
Colorant CI No. 45430		X							
Colorant red FDC No. 3		X							
Colorant red ponceau 4R		X							
Corn starch	X						X	X	X
Ethilic alcohol				X					
Lactose monohydrate	X				X			X	
Magnesium stearate	X	X	X	X	X	X	X	X	X
Mannitol		X	X	X			X		X
Methylcellulose	X								
Microcrystalline cellulose	X	X	X	X		X		X	
Orange essence		X	X						
Polyvinylpyrrolidone							X		X
Povidone		X		X		X			
Silicon dioxide				X					
Sodium amidoglycolate	X				X		X	X	X
Sodium croscarmellose			X	X		X			
Sodium laurilsulfate		X		X				X	
Sodium sacharine	X								
Sodium sacharine dihydrate					X				
Starch		X	X	X	X	X			
Strawberry flavor	X								
Talc		X	X			X		X	
Vanilla flavor				X					
Vanillin									X

*e-mail: simonebonemer@yahoo.com.br

Table S2. Batches, presentation of formulation, code of sample and percentages found of each polymorph in the tablets

Date of expiration	Presentation / mg	Code of sample	Crystal form / % mass
11/2013	500	R-01	96.5% C e 4.5% A
7/2011	100	R-02	100% A
10/2012	100	G-01	100% A
5/2011	100	G-02 batch L1	B (same of A and C)
2/2012	100	G-02 batch L2	100% C
5/2012	100	G-02 batch L3	100% C
11/2010	500	G-03	97.1% C and 2.9% A
8/2010	100	G-04	100% A
10/2012	100	G-05	100% A
6/2011	100	S-01 batch M1	100% A
8/2011	100	S-01 batch M2	100% A
12/2011	100	S-01 batch M3	100% A
7/2011	100	S-02	100% A

**Figure S1.** Forms B of the mebendazole described in the literature.