

Supplementary Information

Application of a Low Pressure Spray Chamber for the Determination of Mercury Concomitantly to other Trace Elements by Inductively Coupled Plasma Mass Spectrometry

Jefferson S. de Gois*^a and Daniel L. G. Borges^{a,b}

^aDepartamento de Química, Universidade Federal de Santa Catarina,
88040-970 Florianópolis-SC, Brazil

^bINCT de Energia e Ambiente do CNPq, Florianópolis-SC, Brazil

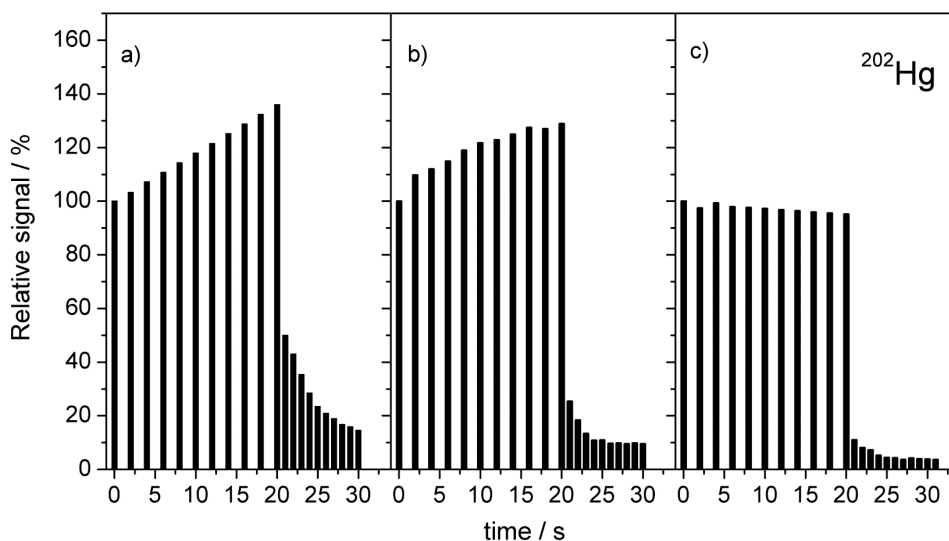


Figure S1. Evaluation of the memory effect for ²⁰²Hg using a solution containing 10 µg L⁻¹ of the analyte in 0.14 mol L⁻¹ HNO₃ under different suction flow-rates: (a) suction flow-rate of 0.1 L min⁻¹; (b) suction flow-rate of 0.2 L min⁻¹ and (c) suction flow-rate of 0.3 L min⁻¹. The relative signal refers to the signal obtained in the first measurement (i.e., at 'time zero').