

Supplementary Information

New Phenolic Glycosides from *Phyllanthus cochinchinensis*

Jian-Qiang Zhao,^{a,b} Yan-Ming Wang,^{a,b} Jun-Jiang Lv,^a Hong-Tao Zhu,^a Dong Wang,^a
Chong-Ren Yang,^a Min Xu^{*,a} and Ying-Jun Zhang^{*,a}

^aState Key Laboratory of Phytochemistry and Plant Resources in West China,
Kunming Institute of Botany, Chinese Academy of Sciences, 650201 Kunming, P. R. China

^bUniversity of Chinese Academy of Sciences, 100049 Beijing, P. R. China

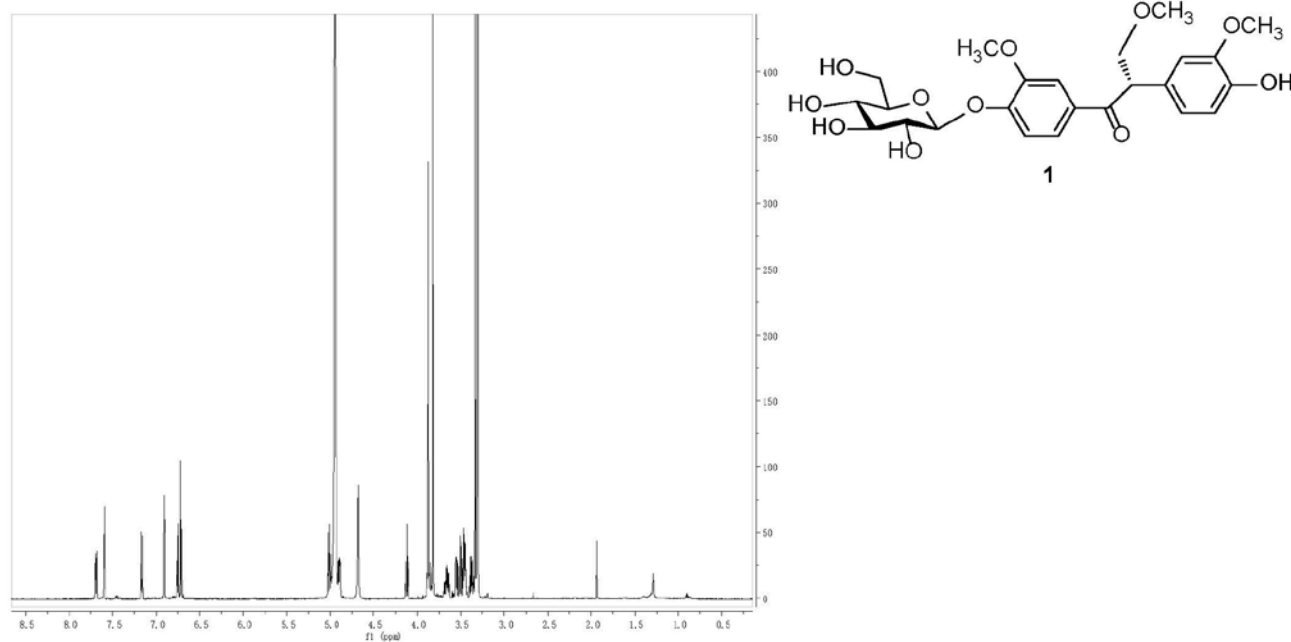


Figure S1. ¹H-NMR (CD₃OD, 500 MHz) spectrum of compound 1.

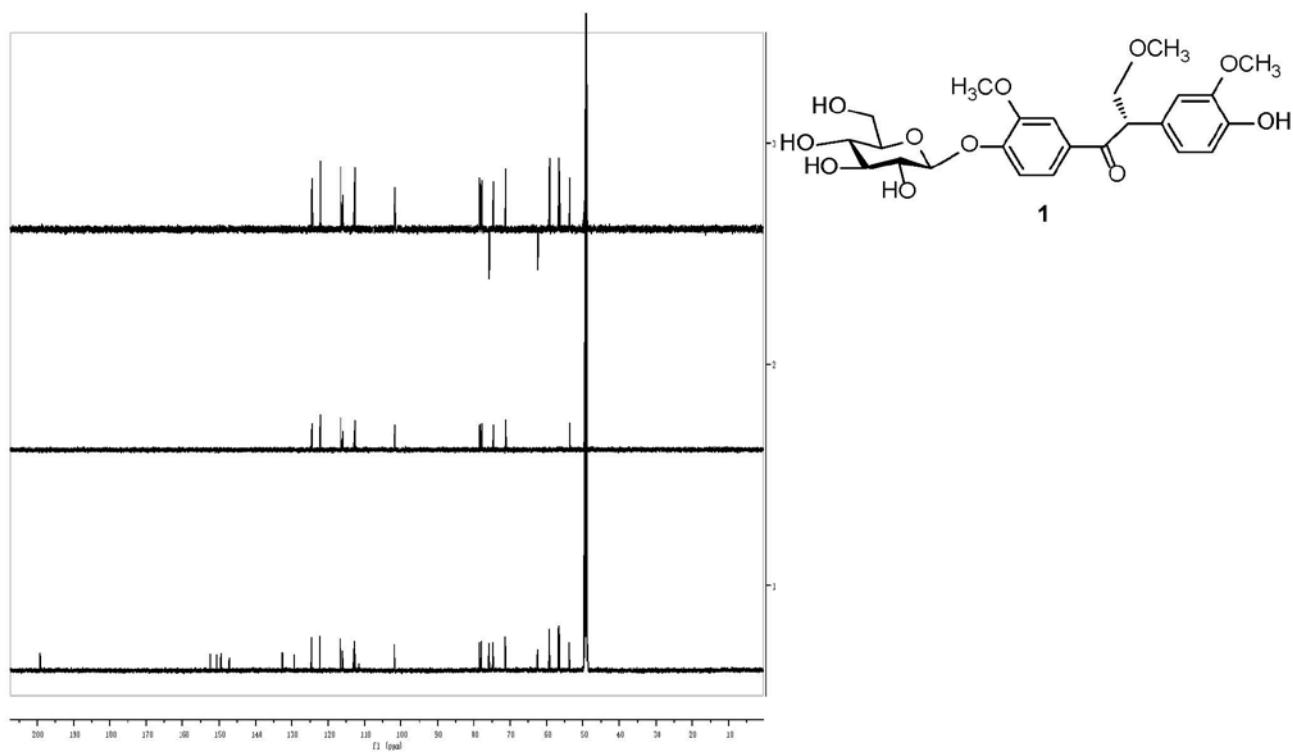


Figure S2. ^{13}C -NMR and DEPT (CD₃OD, 125 MHz) spectra of compound **1**.

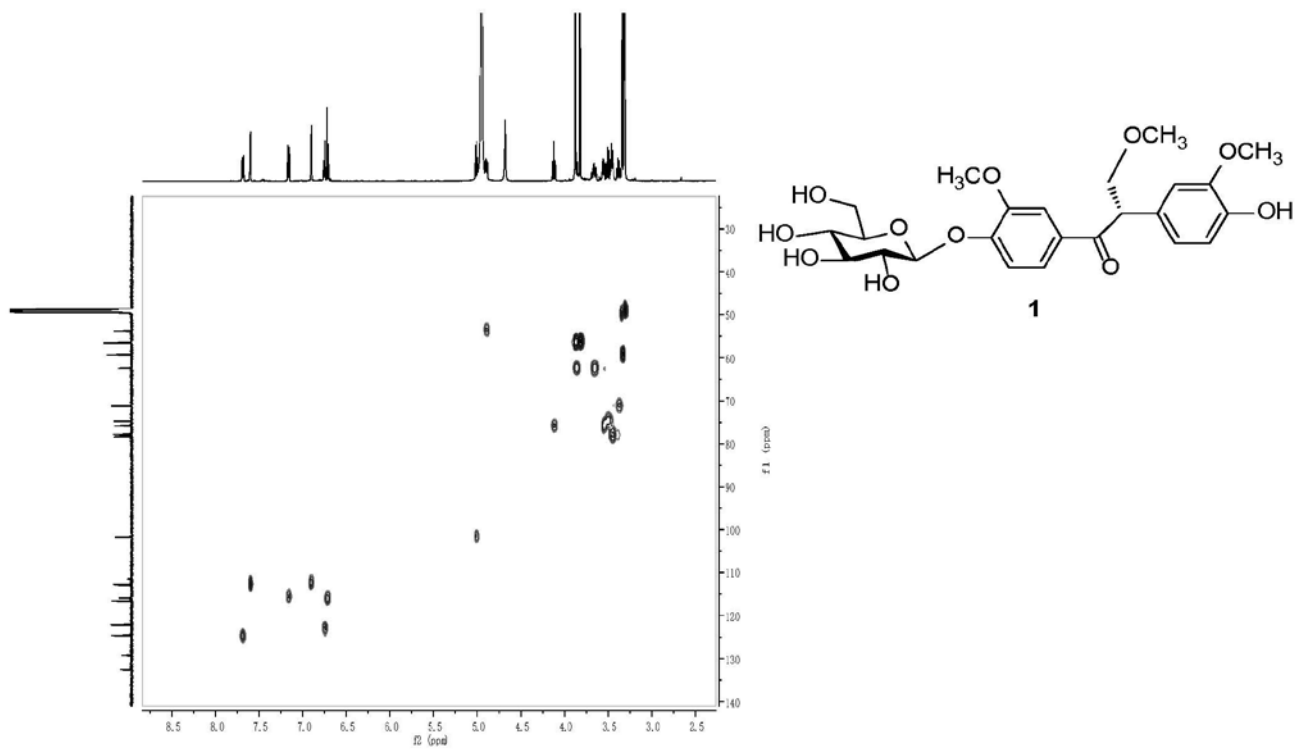


Figure S3. HSQC (CD₃OD, 500 MHz) spectrum of compound **1**.

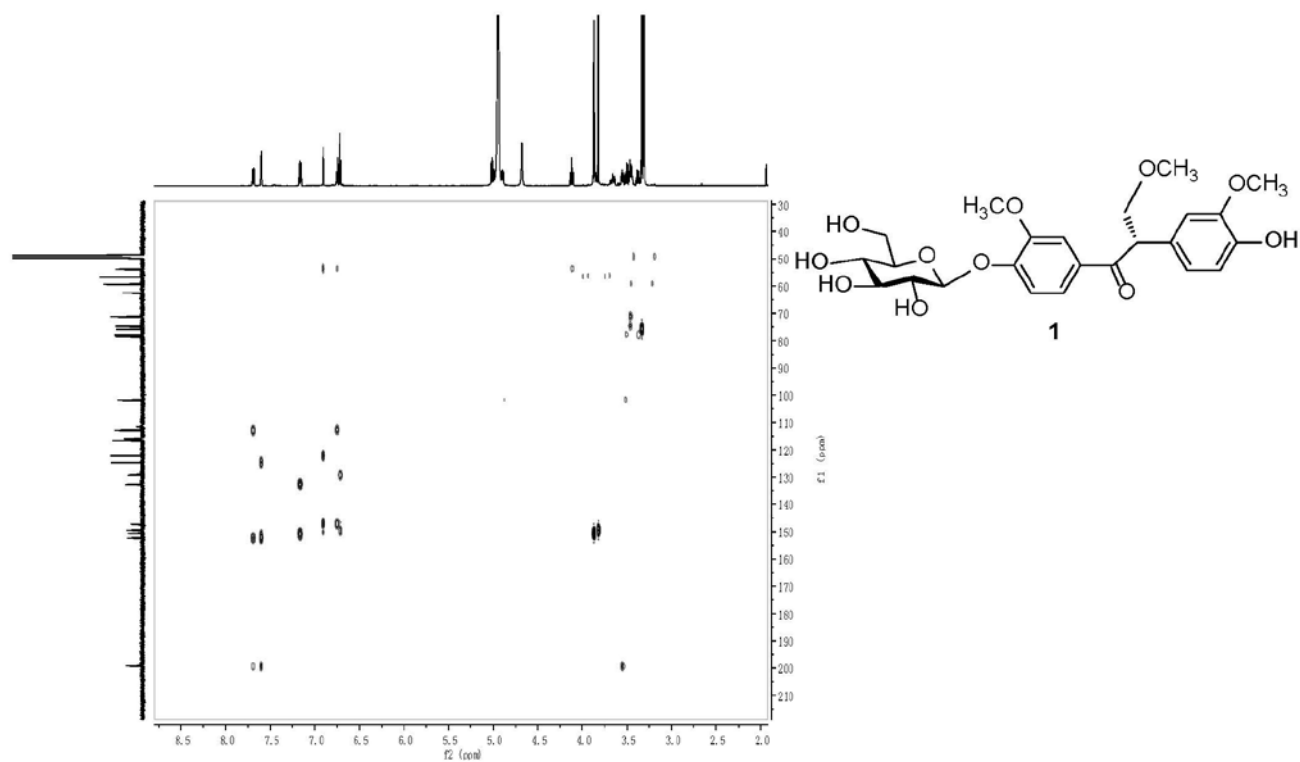


Figure S4. HMBC (CD₃OD, 500 MHz) spectrum of compound 1.

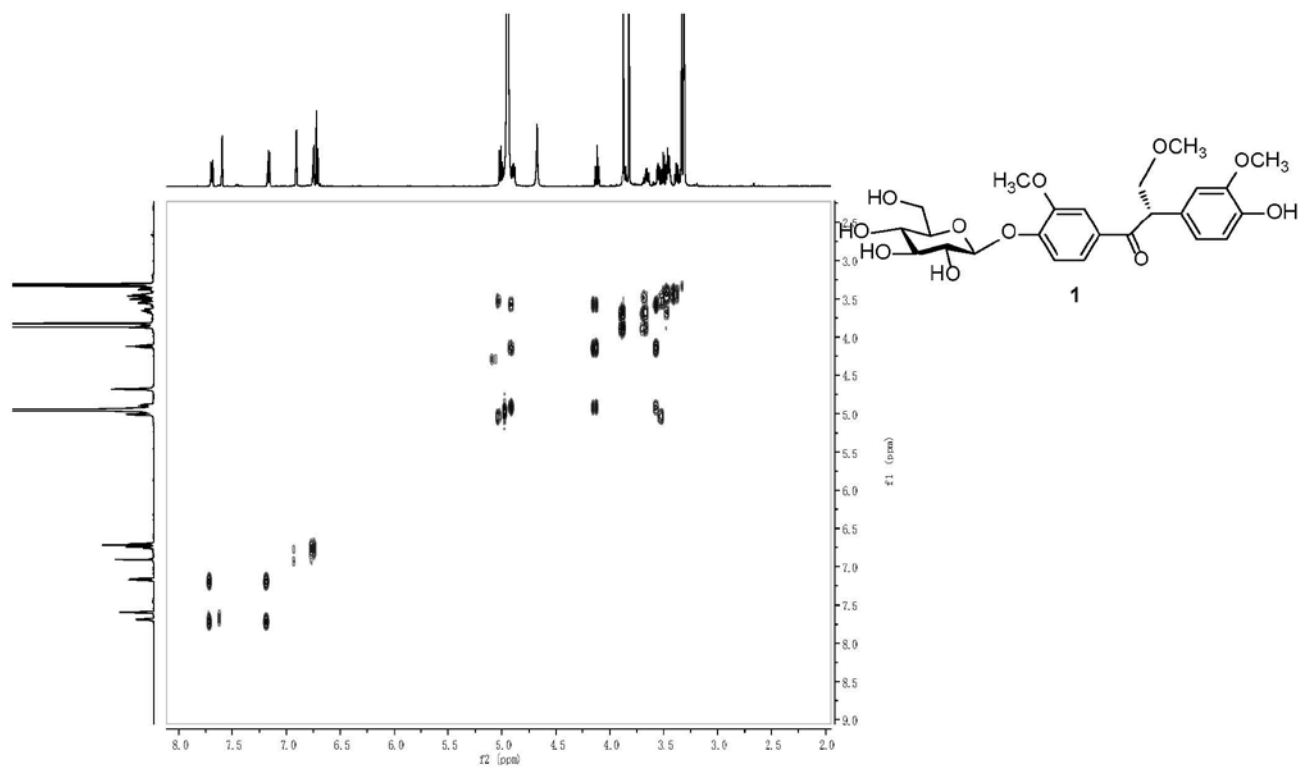


Figure S5. ¹H-¹H COSY (CD₃OD, 500 MHz) spectrum of compound 1.

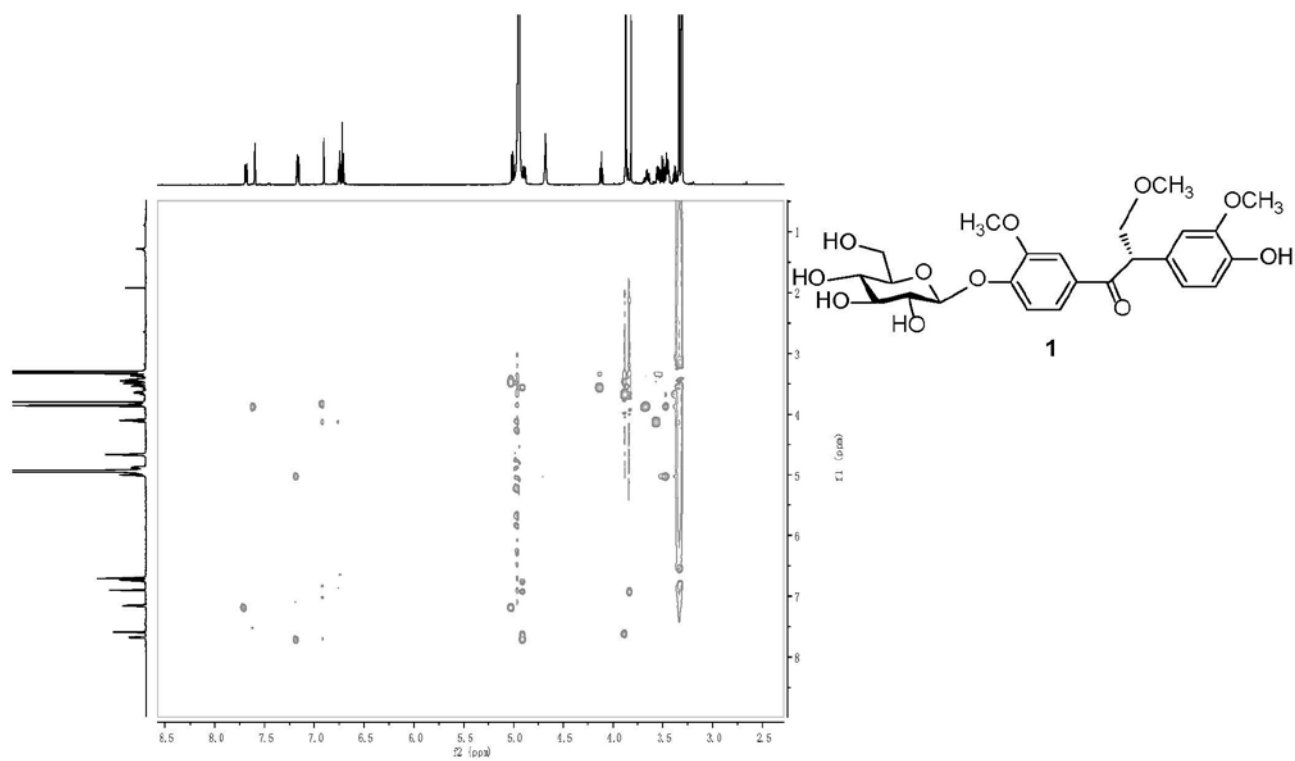


Figure S6. ROESY (CD₃OD, 500 MHz) spectrum of compound 1.

Elemental composition calculator

Target m/z: +517.1686 amu
Tolerance: +10.0000 ppm
Result type: Elemental
Max num of results: 100
Min DBE: -0.5000 Max DBE: +50.0000
Electron state: OddAndEven
Num of charges: 1
Add water: N/A
Add proton: N/A
File Name: yb4322-3+.wiff

	Elements	Min Number	Max Number
1	Br	0	0
2	C	0	24
3	Cl	0	0
4	F	0	0
5	H	0	40
6	N	0	0
7	Na	0	1
8	O	0	12
9	S	0	0

	Formula	Calculated m/z (amu)	mDa Error	PPM Error	DBE
1	C24 H30 O11 Na	517.1680	0.5666	1.0956	9.5

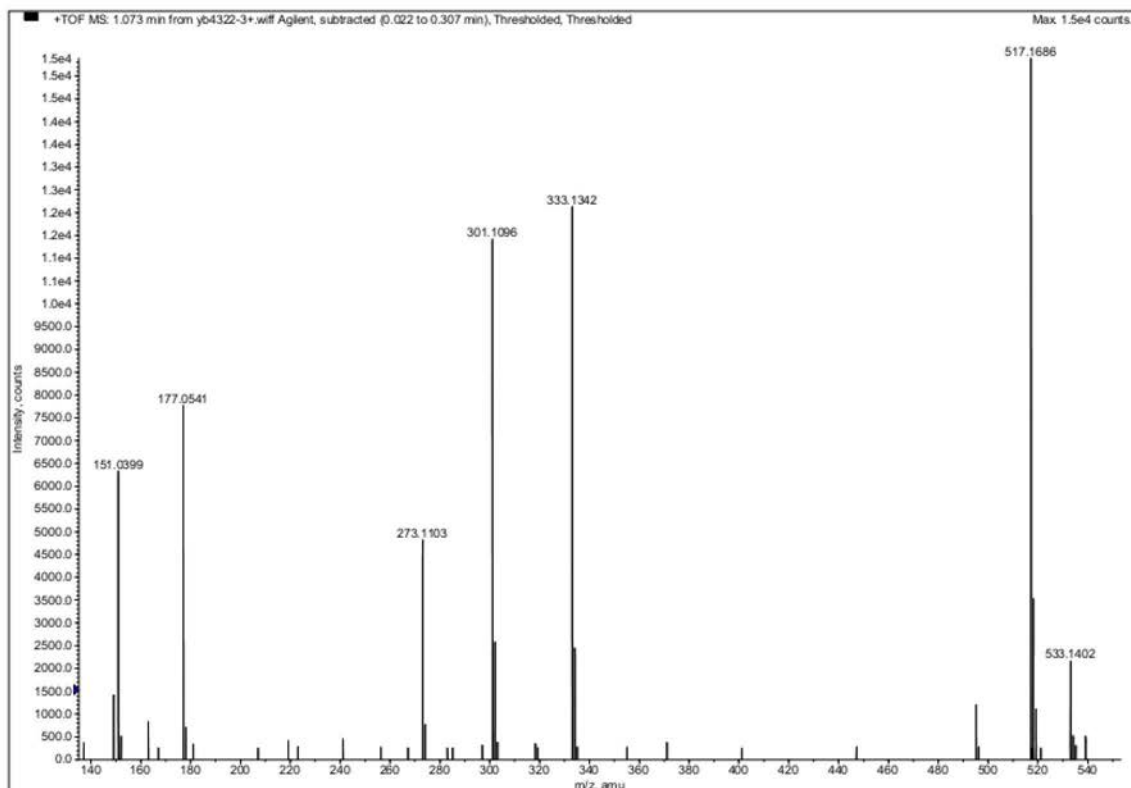


Figure S7. HRESITOF-MS spectrum of **1**.

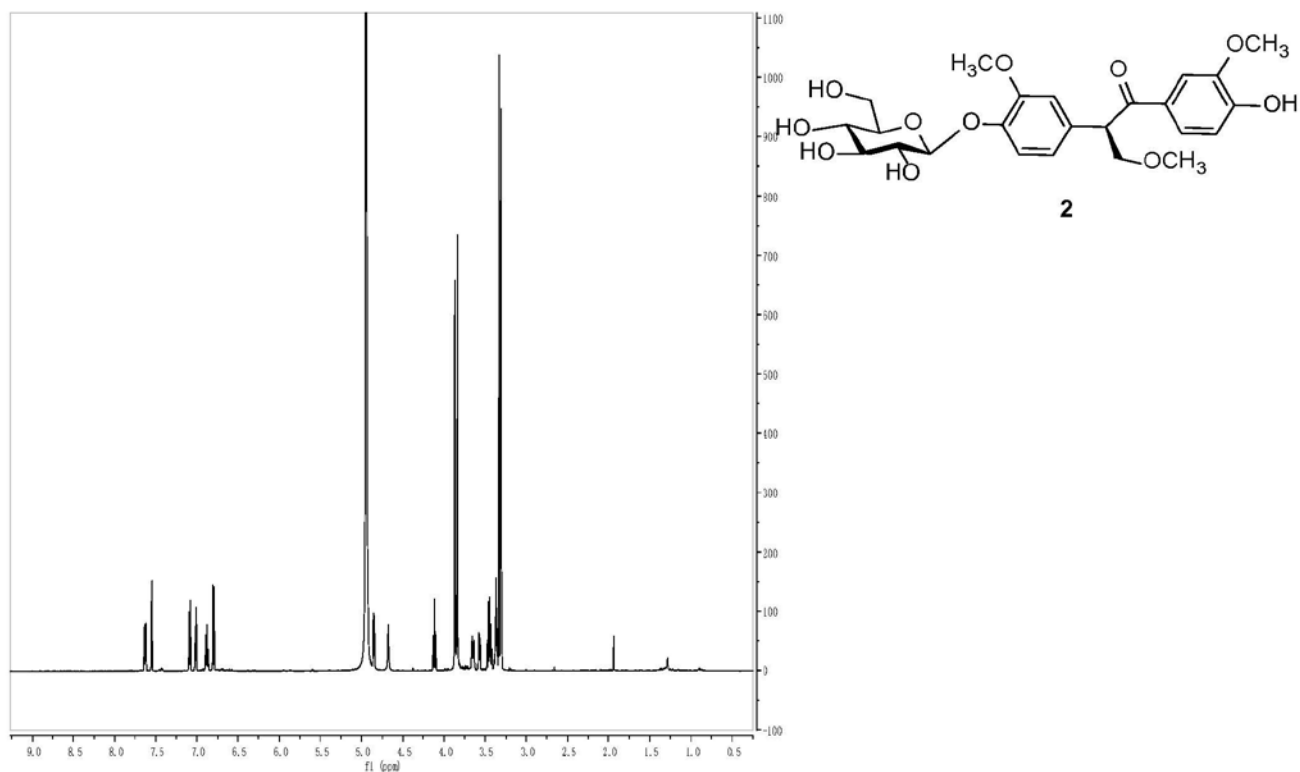


Figure S8. ¹H-NMR (CD₃OD, 500 MHz) spectrum of compound 2.

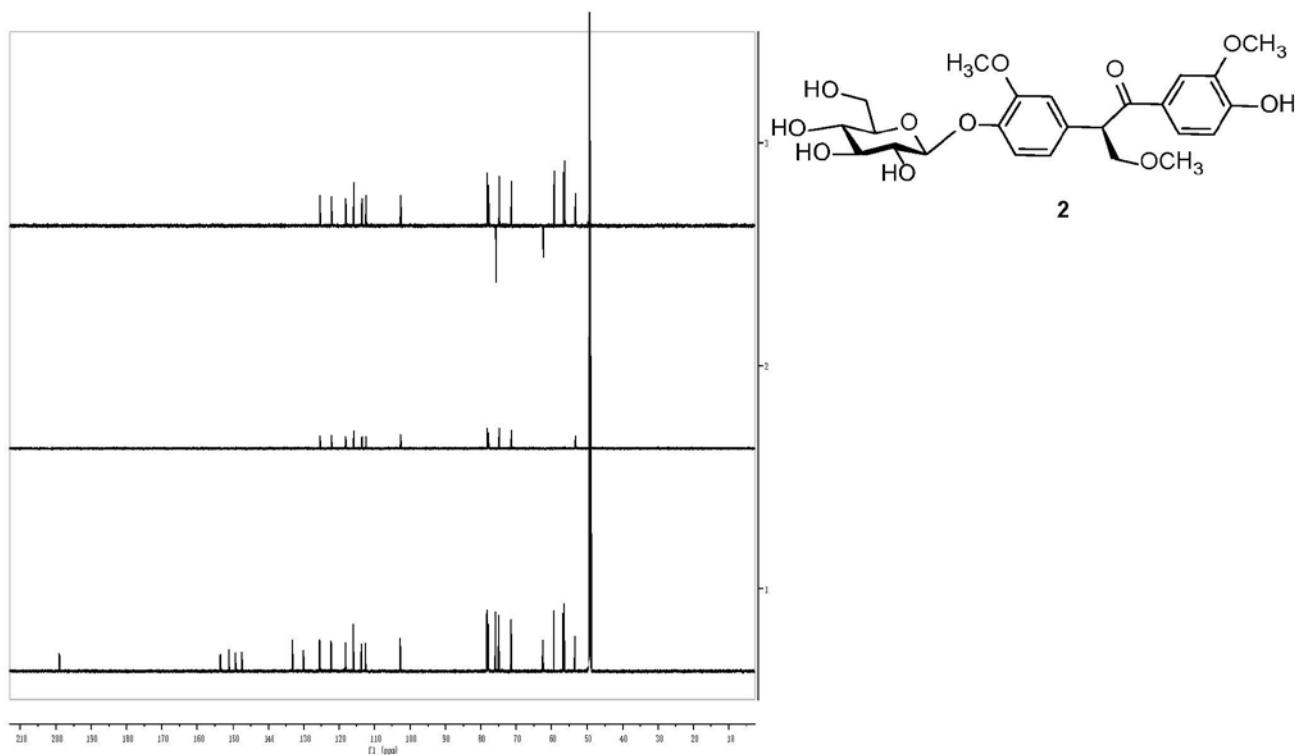


Figure S9. ¹³C-NMR and DEPT (CD₃OD, 125 MHz) spectra of compound 2.

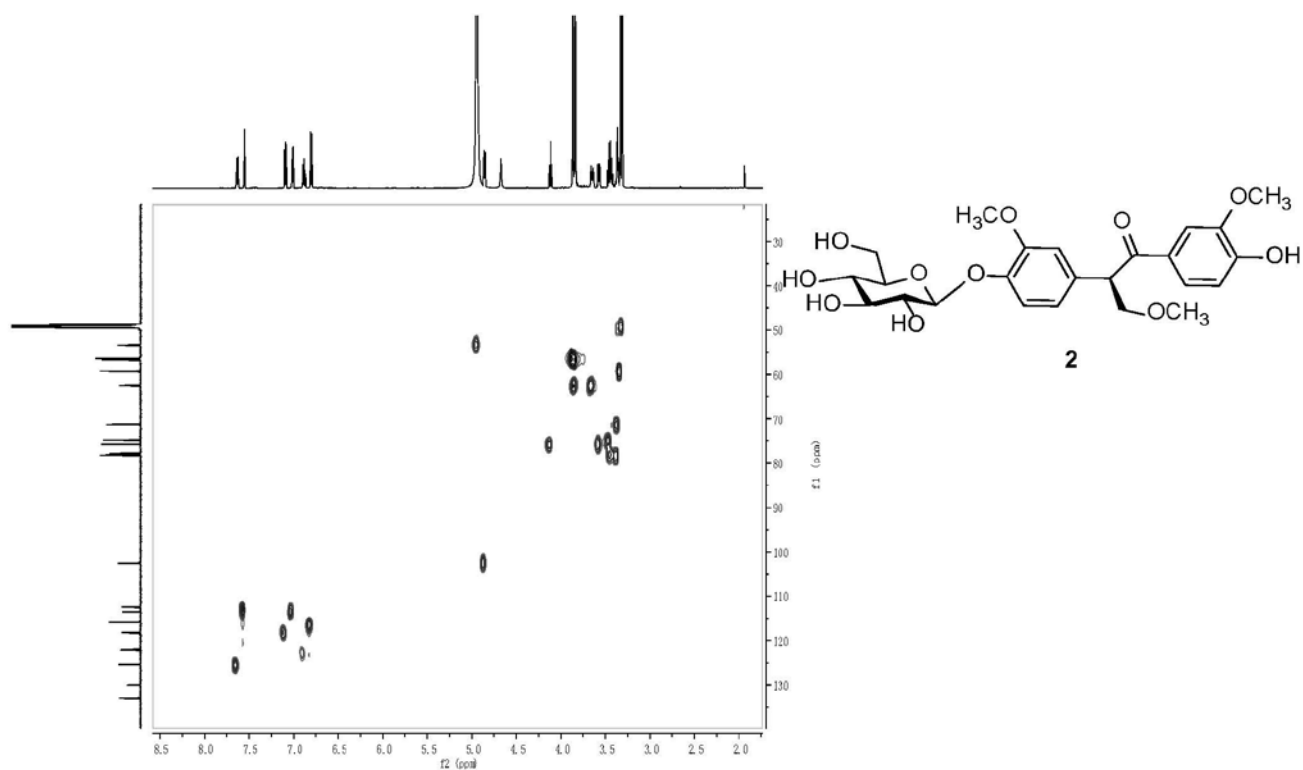


Figure S10. HSQC (CD₃OD, 500 MHz) spectrum of compound 2.

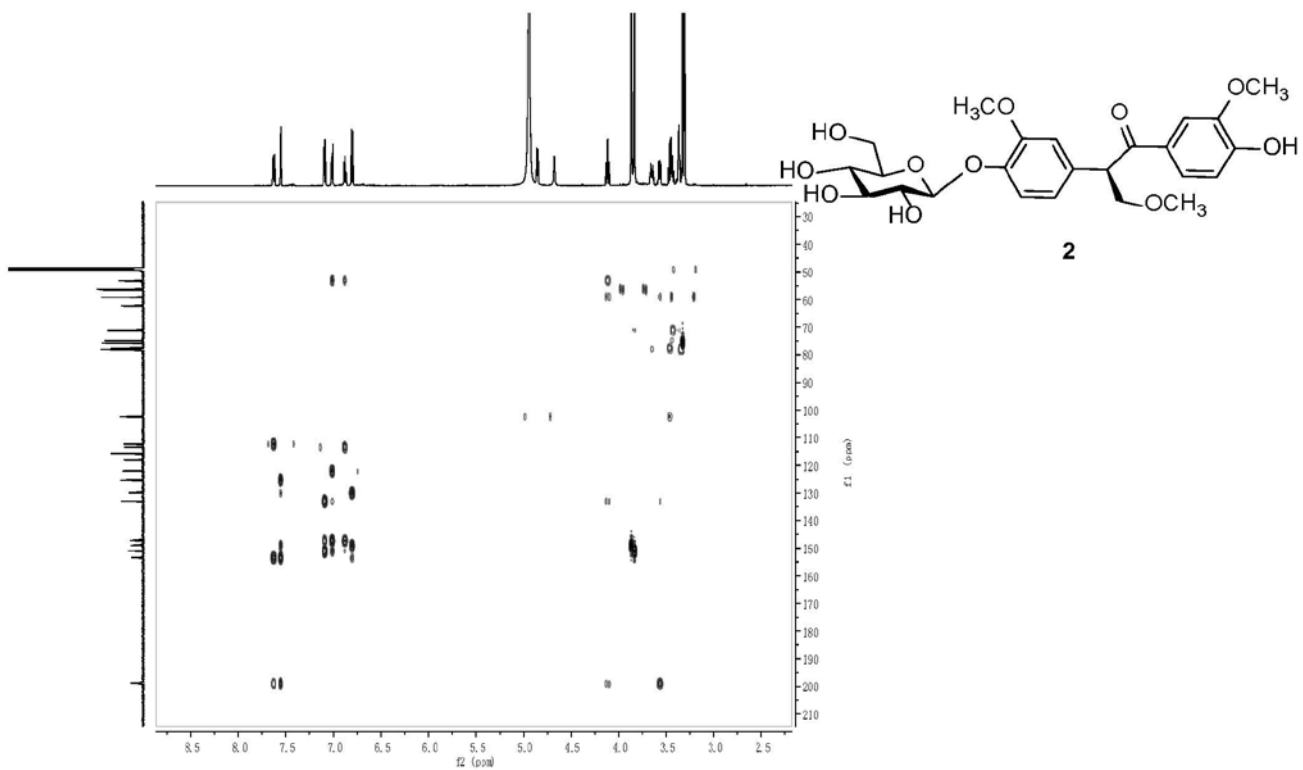


Figure S11. HMBC (CD₃OD, 500 MHz) spectrum of compound 2.

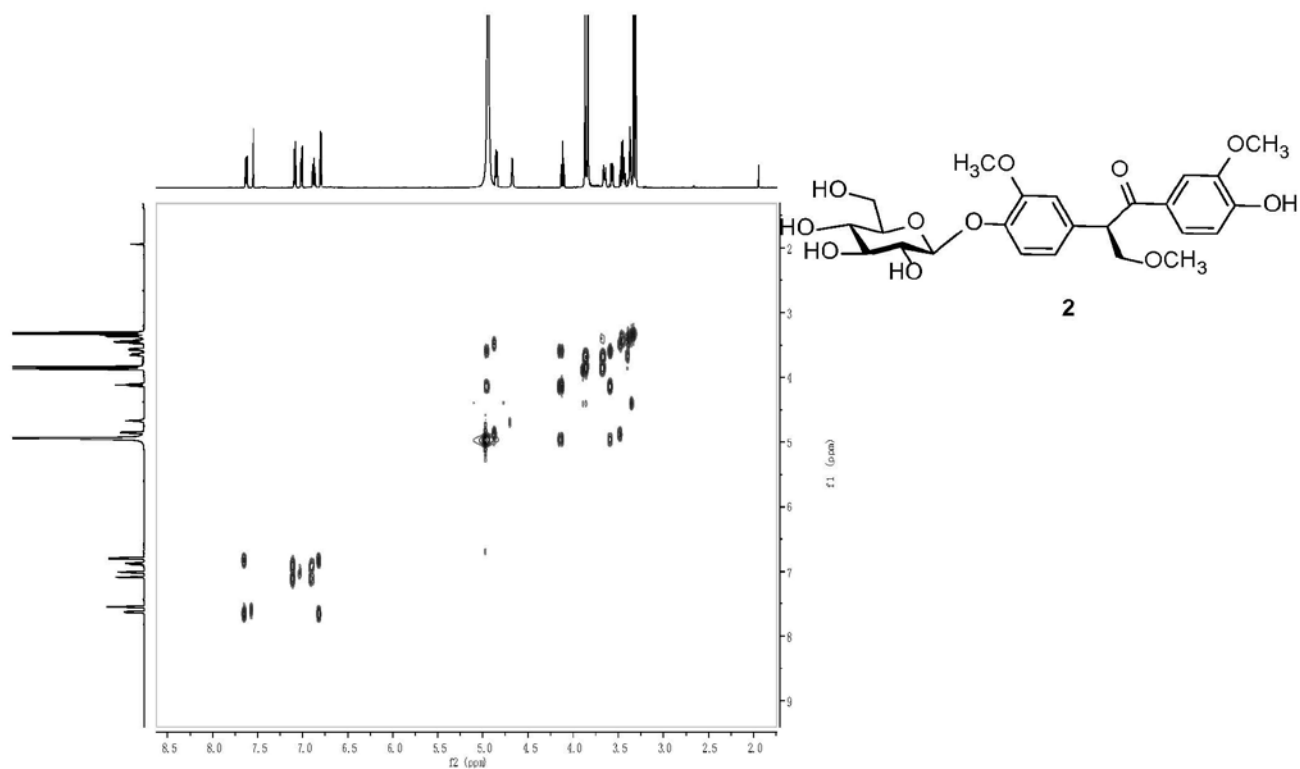


Figure S12. ^1H - ^1H COSY (CD_3OD , 500 MHz) spectrum of compound **2**.

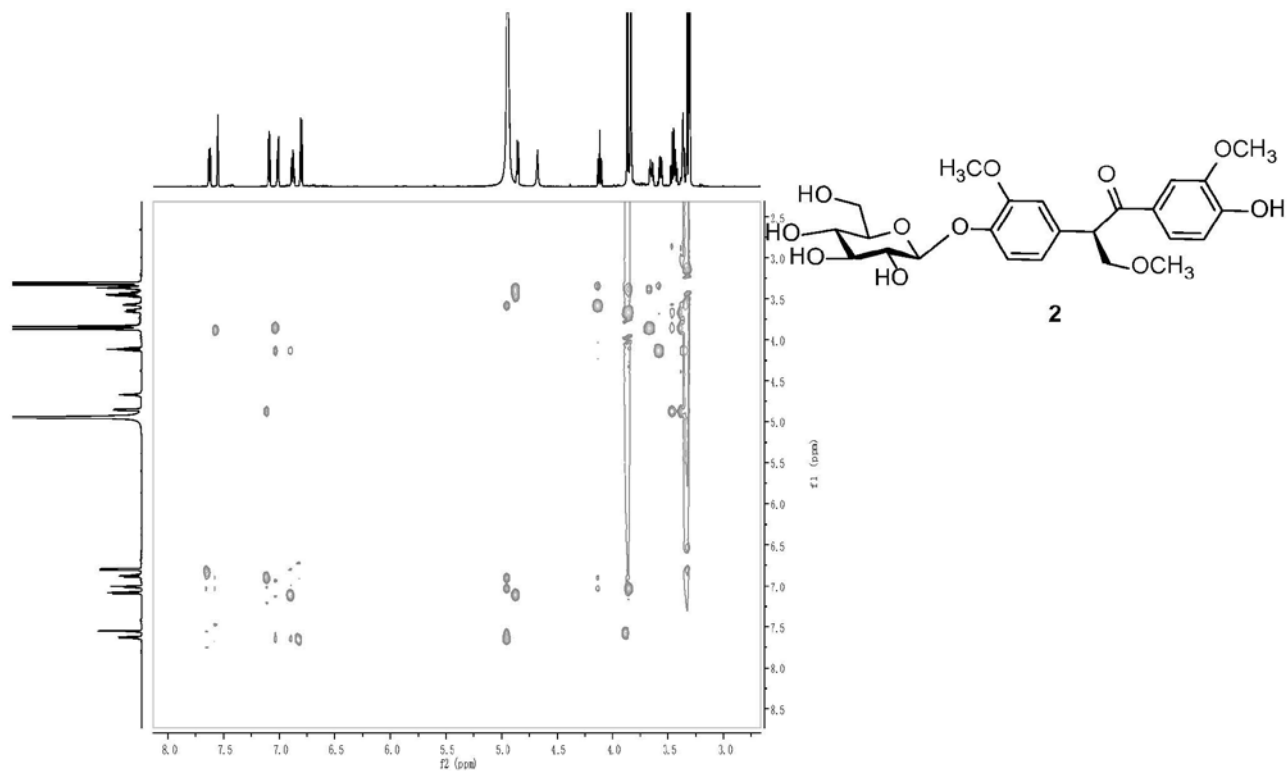


Figure S13. ROESY (CD_3OD , 500 MHz) spectrum of compound **2**.

Elemental composition calculator

Target m/z: +517.1688 amu
Tolerance: +10.0000 ppm
Result type: Elemental
Max num of results: 100
Min DBE: -0.5000 Max DBE: +50.0000
Electron state: OddAndEven
Num of charges: 1
Add water: N/A
Add proton: N/A
File Name: yb4321-3+.wiff

	Elements	Min Number	Max Number
1	Br	0	0
2	C	0	24
3	Cl	0	0
4	F	0	0
5	H	0	40
6	N	0	0
7	Na	0	1
8	O	0	12
9	S	0	0

	Formula	Calculated m/z (amu)	mDa Error	PPM Error	DBE
1	C24 H30 O11 Na	517.1680	0.7666	1.4823	9.5

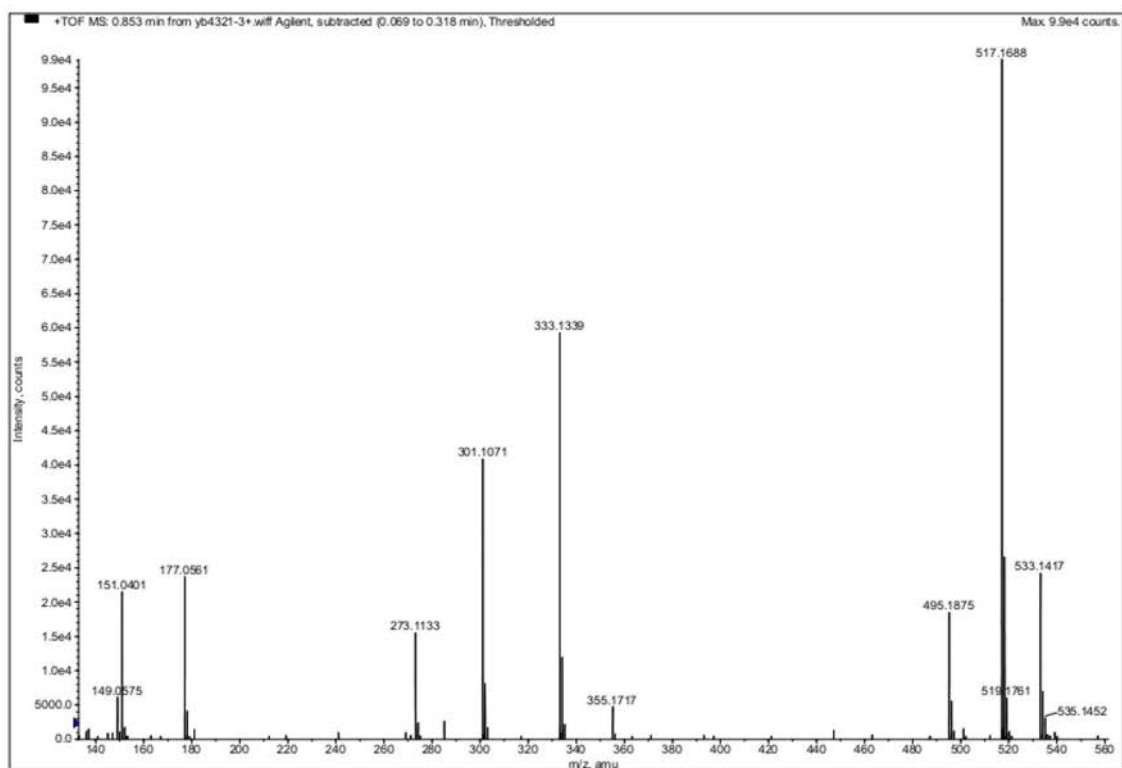


Figure S14. HRESITOF-MS spectrum of 2.

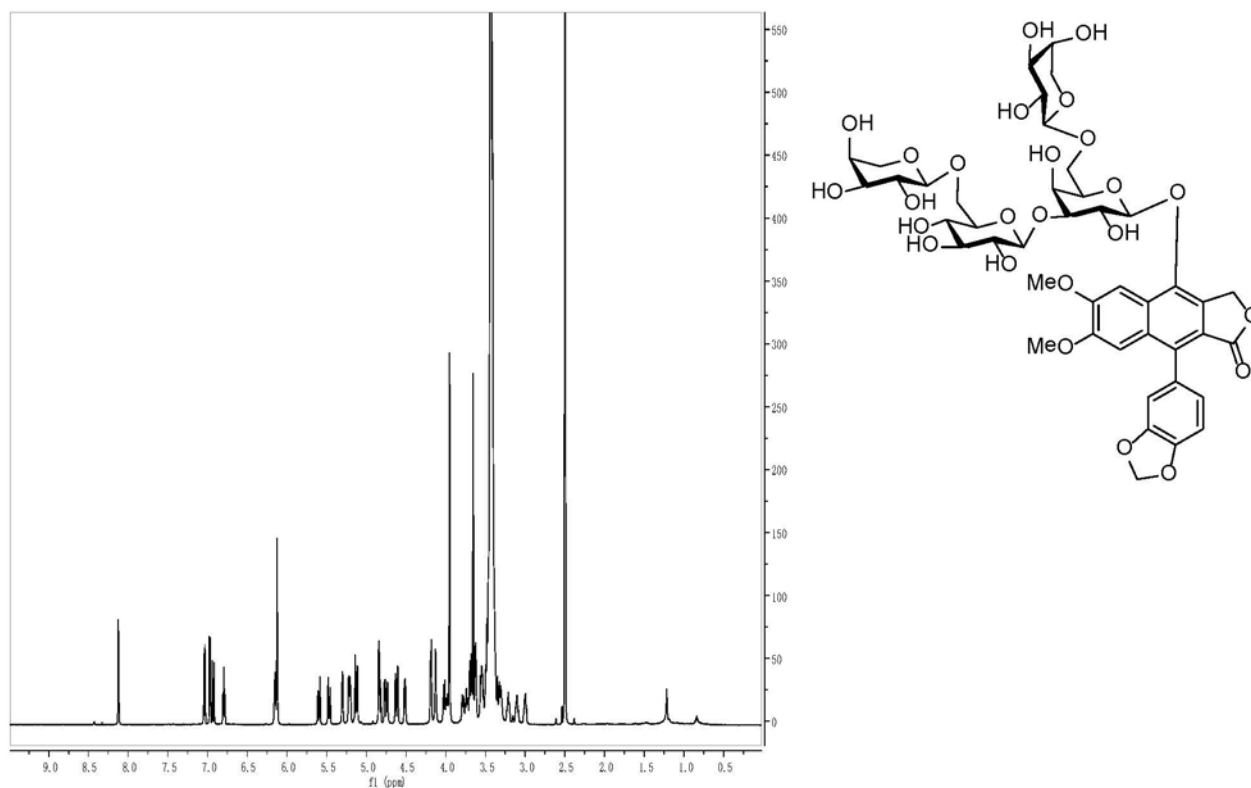


Figure S15. ¹H-NMR (DMSO, 600 MHz) spectrum of compound 3.

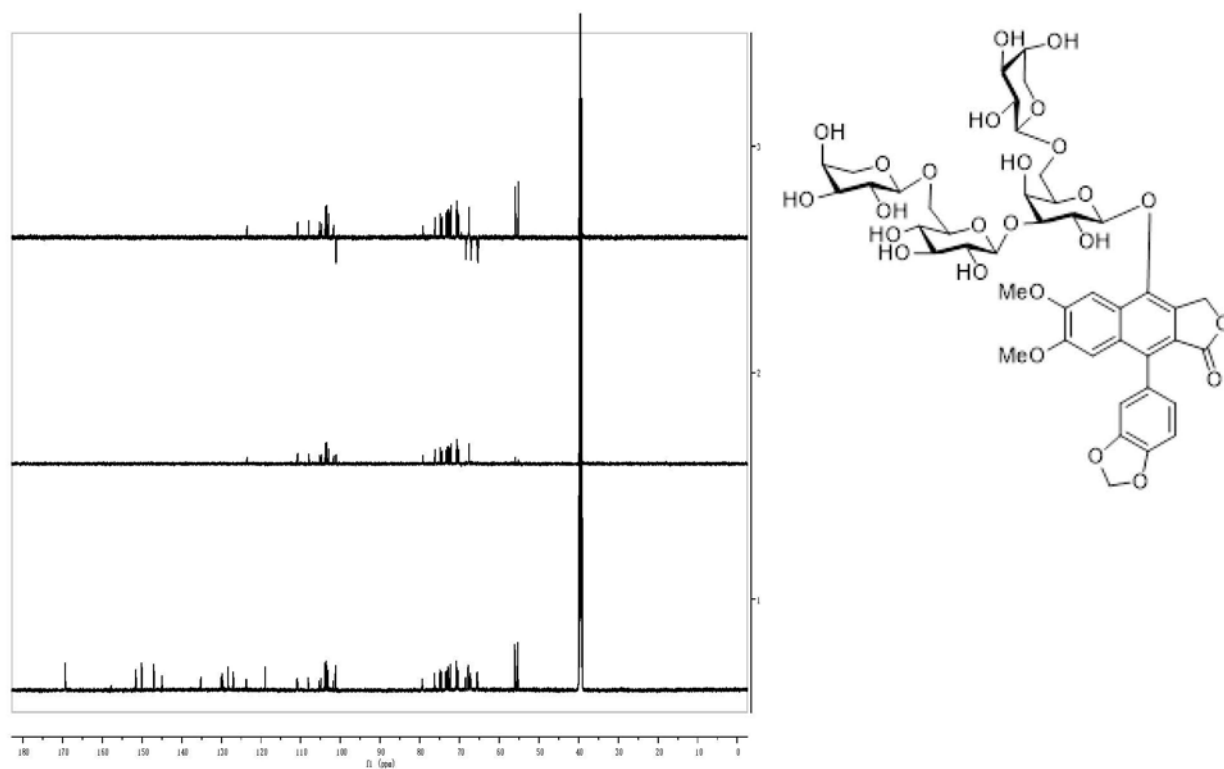


Figure S16. ¹³C-NMR and DEPT (DMSO, 150 MHz) spectra of compound 3.

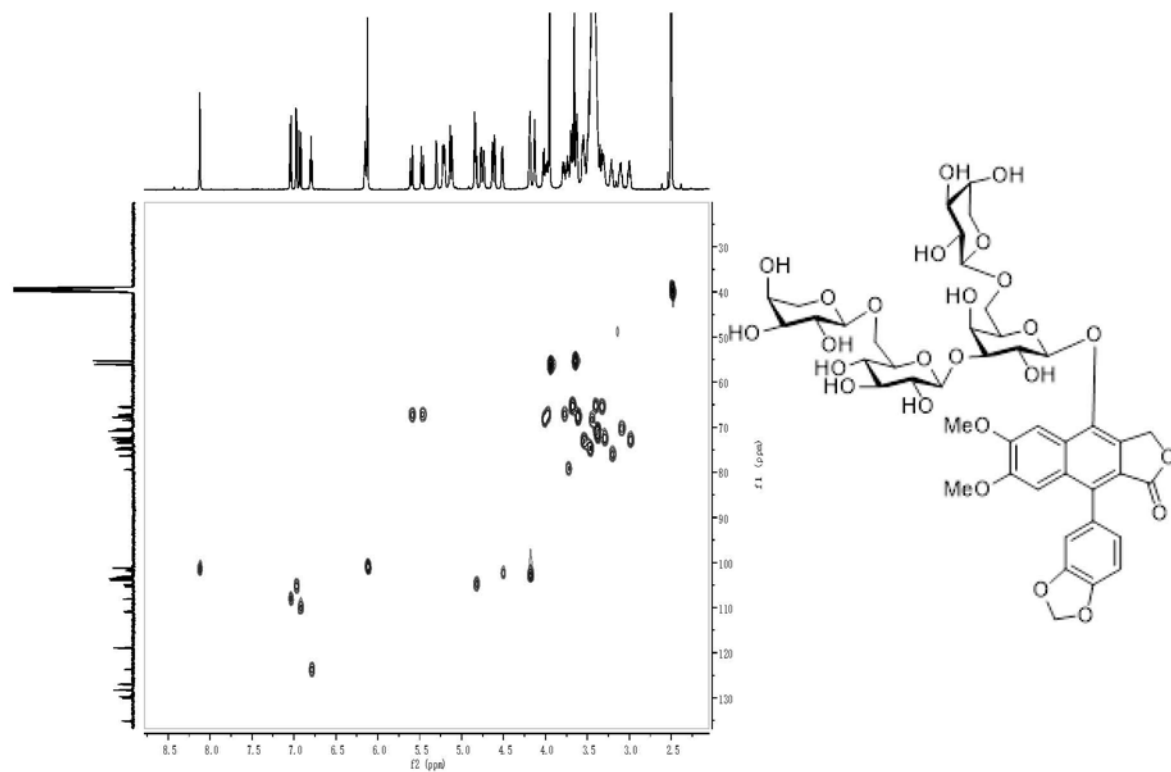


Figure S17. HSQC (DMSO, 600 MHz) spectrum of compound 3.

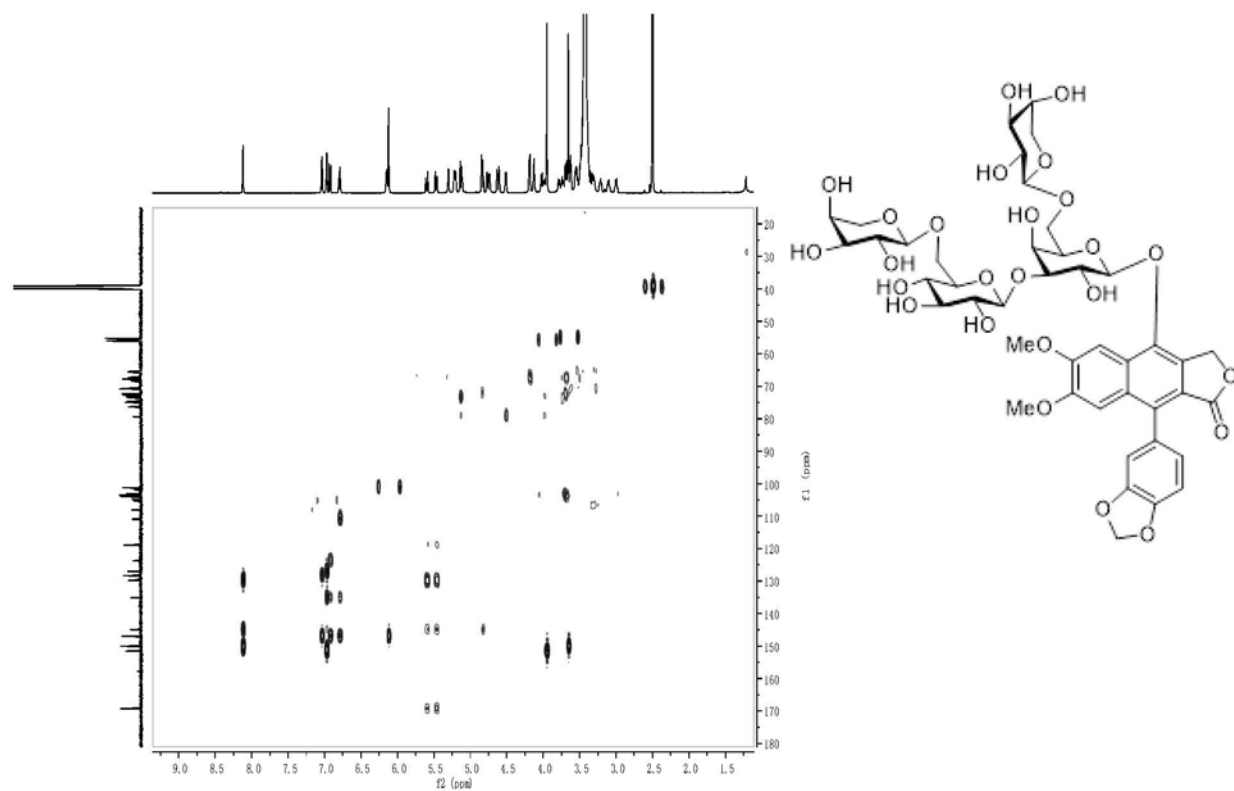


Figure S18. HMBC (DMSO, 600 MHz) spectrum of compound 3.

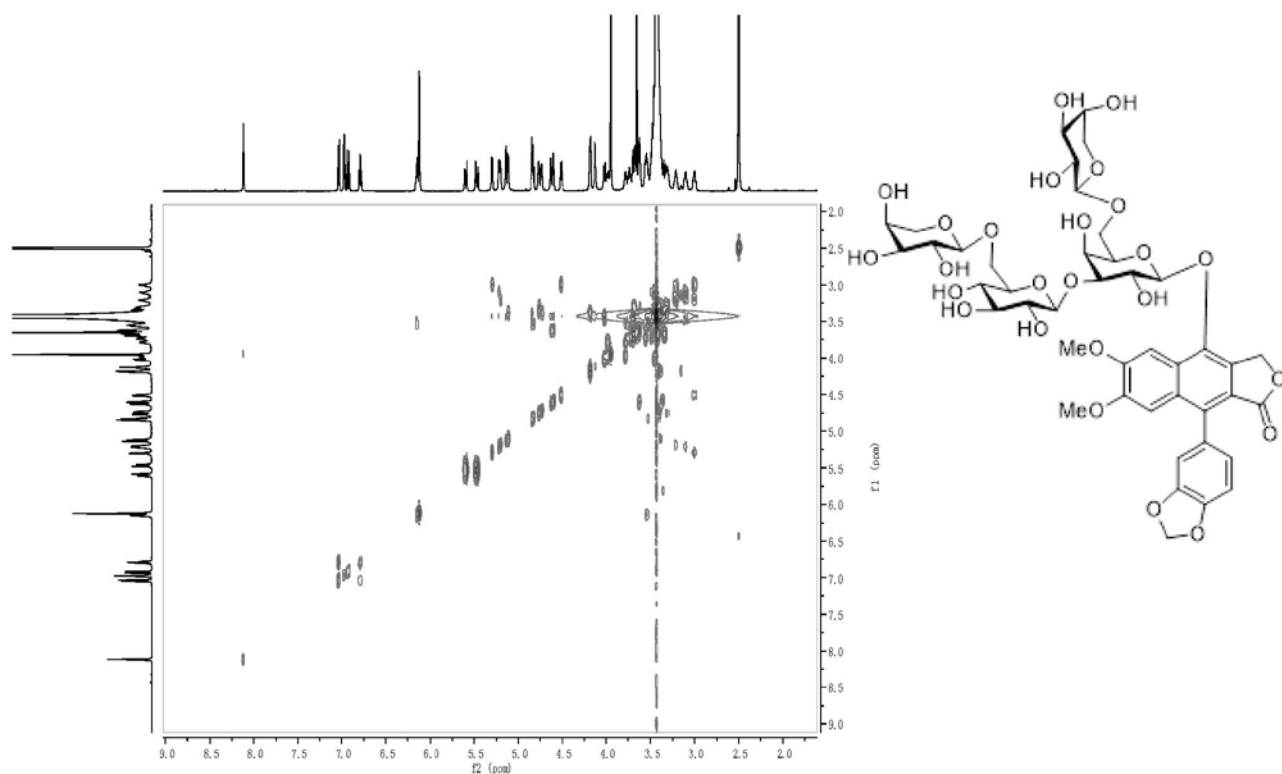


Figure S19. ^1H - ^1H COSY (DMSO, 600 MHz) spectrum of compound 3.

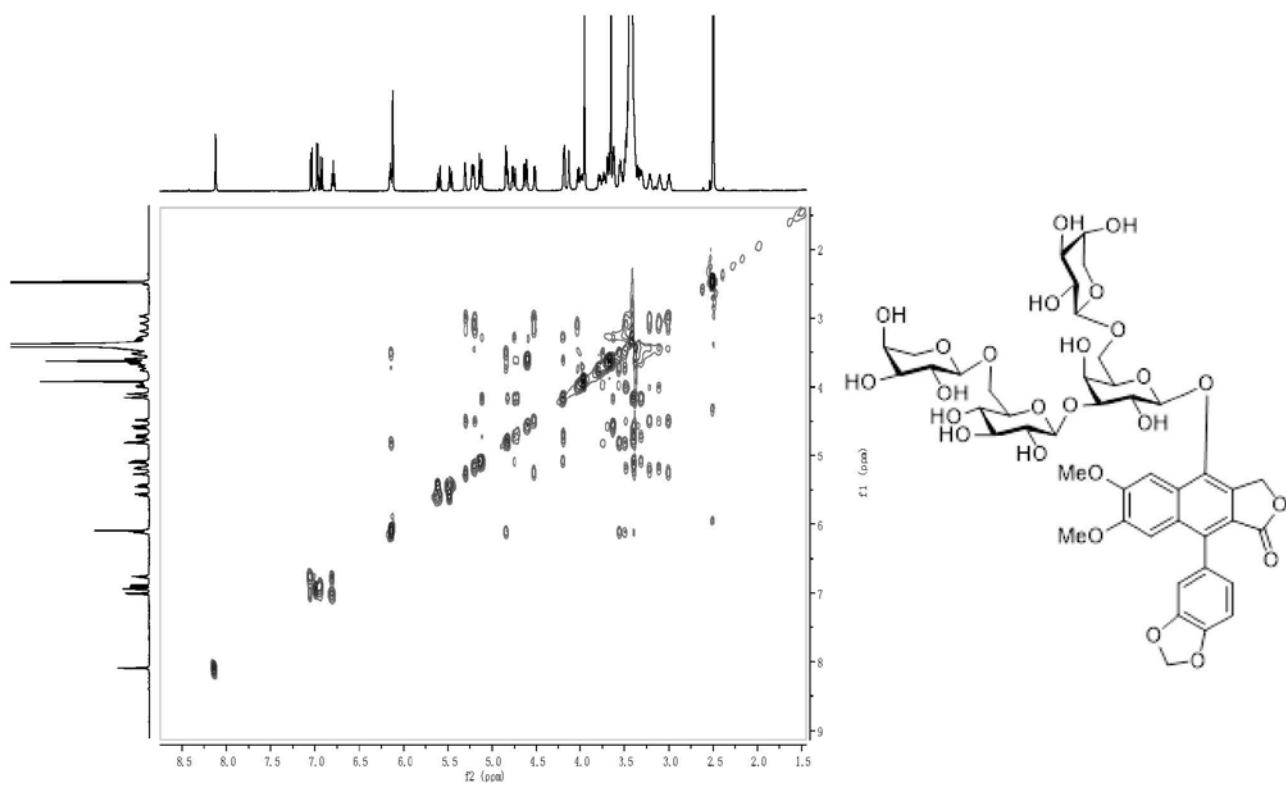


Figure S20. ^1H - ^1H TOCSY (DMSO, 600 MHz) spectrum of compound 3.

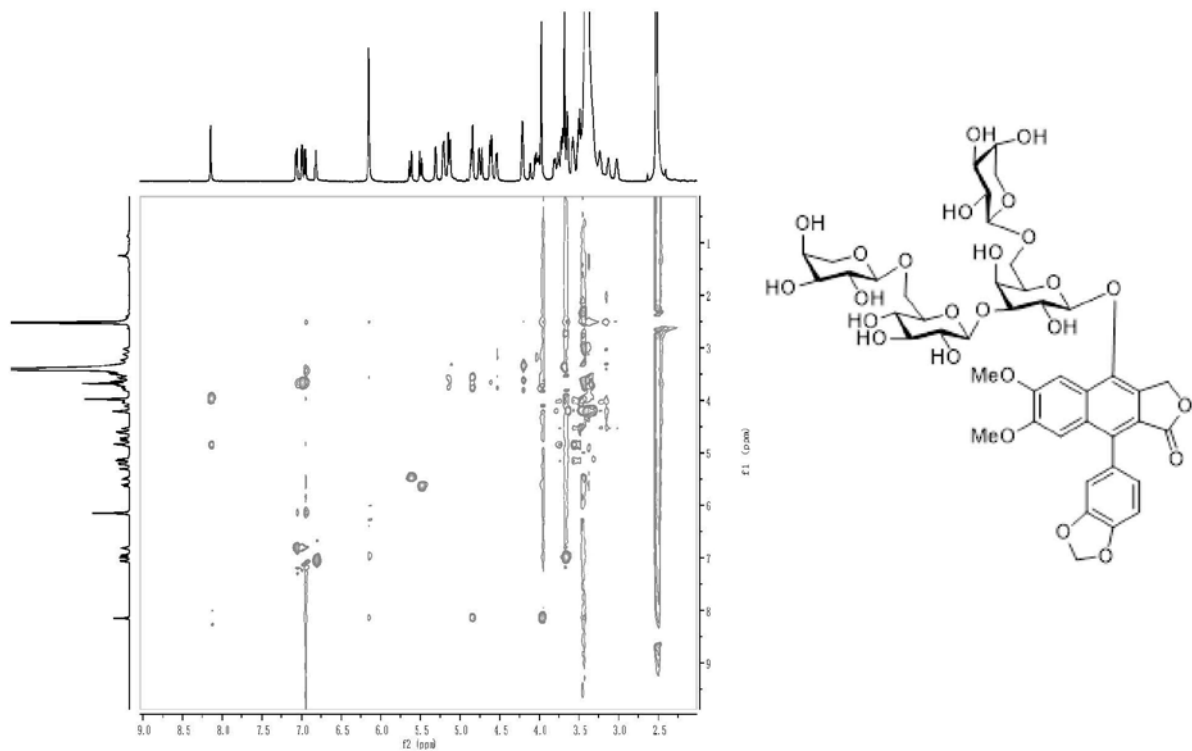


Figure S21. ROESY (DMSO, 600 MHz) spectrum of compound 3.

Elemental composition calculator

Target m/z: +1003.2509 amu
Tolerance: +10.0000 ppm
Result type: Elemental
Max num of results: 1000
Min DBE: -10.0000 Max DBE: +60.0000
Electron state: OddAndEven
Num of charges: 0
Add water: N/A
Add proton: N/A
File Name: 120224ESINA YY5321.wiff

	Elements	Min Number	Max Number
1	2H	0	0
2	Br	0	0
3	C	0	200
4	Cl	1	1
5	F	0	0
6	H	0	400
7	I	0	0
8	K	0	0
9	N	0	0
10	Na	0	0

	Elements	Min Number	Max Number
11	O	24	26
12	P	0	0
13	Pt	0	0
14	S	0	0
15	Si	0	0

	Formula	Calculated m/z (amu)	mDa Error	PPM Error	DBE
1	C43 H52 O25 Cl	1003.2486	2.2791	2.2718	17.5

Figure S22. HRESIMS data of 3.