

Supplementary Information

Ambient Mass Spectrometry Employed for Direct Analysis of Intact Arabica Coffee Beans

Rafael Garrett,^{a,c} Nicolas V. Schwab,^b Elaine C. Cabral,^c Brenno V. M. Henrique,^c
Demian R. Ifa,^c Marcos N. Eberlin^b and Claudia M. Rezende^{*,a}

^aInstitute of Chemistry, Federal University of Rio de Janeiro, 21945-970 Rio de Janeiro-RJ, Brazil

^bThomSON Mass Spectrometry Laboratory, Institute of Chemistry, University of Campinas,
13083-970 Campinas-SP, Brazil

^cCentre for Research in Mass Spectrometry, York University, M3J 1P3 Toronto, Ontario, Canada

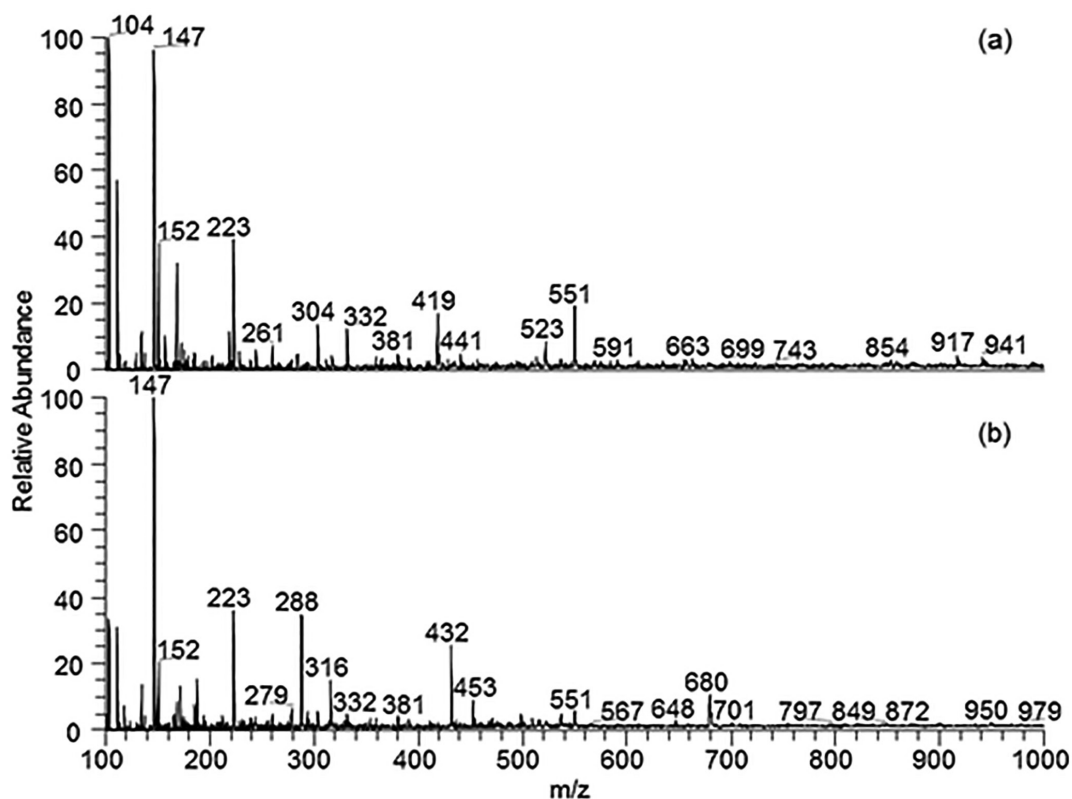


Figure S1. DESI(+)-MS fingerprinting of the convex bean side from coffees processed by the semi-dry (a) and wet (b) post-harvest methods.

*e-mail: crezende@iq.ufrj.br

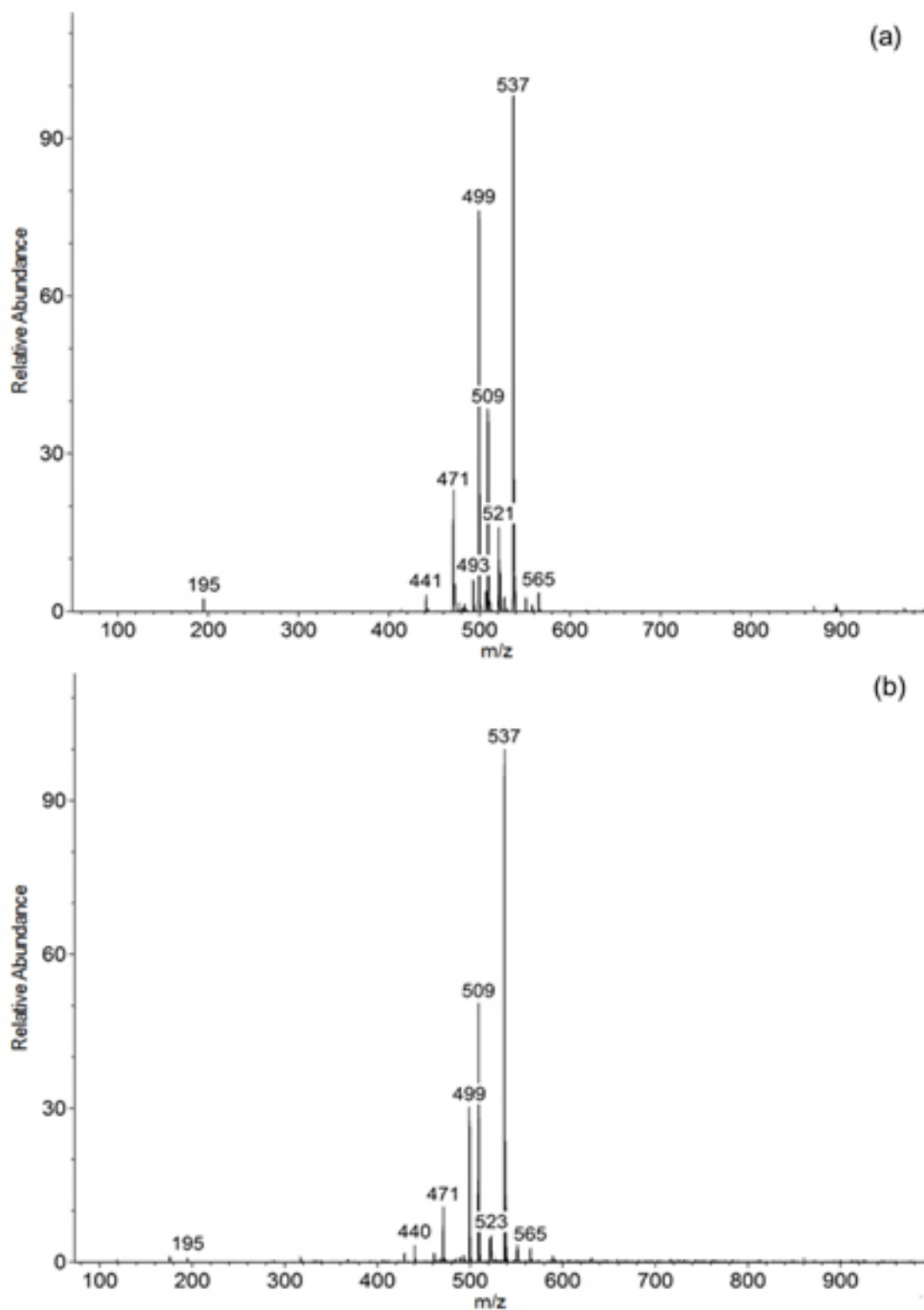


Figure S2. EASI(+)-MS fingerprinting of the flat bean side from coffees processed by the semi-dry (a) and wet (b) post-harvest methods.