

Supplementary Information

Synthesis and *in vitro* Evaluation of New Benzenesulfonamides as Antileishmanial Agents

Julio C. Borges,^{*a} Adriana V. Carvalho,^b Alice M. R. Bernardino,^a César D. Oliveira,^a
Luiz C. S. Pinheiro,^a Roberta K. F. Marra,^a Helena C. Castro,^c Solange M. S. V. Wardell,^d
James L. Wardell,^{e,f} Veronica F. Amaral,^g Marilene M. Canto-Cavalheiro,^b
Leonor L. Leon^b and Marcelo Genestra^{†,b}

^aPrograma de Pós-Graduação em Química, Departamento de Química Orgânica Universidade Federal Fluminense, Outeiro de São João Baptista, s/n, 24020-141 Niterói-RJ, Brazil

^bLaboratório de Bioquímica de Tripanosomatídeos, IOC, Fundação Oswaldo Cruz, 21040-900 Rio de Janeiro-RJ, Brazil

^cPrograma de Pós-Graduação em Ciências e Biotecnologia e LABiEMol, GCM, Instituto de Biologia, Universidade Federal Fluminense, Outeiro de São João Batista, s/n, 24020-141 Niterói-RJ, Brazil

^dCHEMSOL, 1 Harcourt Road, Aberdeen, AB15 5NY, Scotland

^eInstituto de Tecnologia em Fármacos, Fundação Oswaldo Cruz, Farmanguinhos, 21041-250 Rio de Janeiro-RJ, Brazil

^fChemistry Department, University of Aberdeen, Meston Walk, Old Aberdeen, AB243EU, Scotland

^gPrograma de Pós-Graduação em Ciências e Biotecnologia, Departamento de Imunobiologia, Instituto de Biologia, Universidade Federal Fluminense, Outeiro de São João Baptista, s/n, 24020-141 Niterói-RJ, Brazil

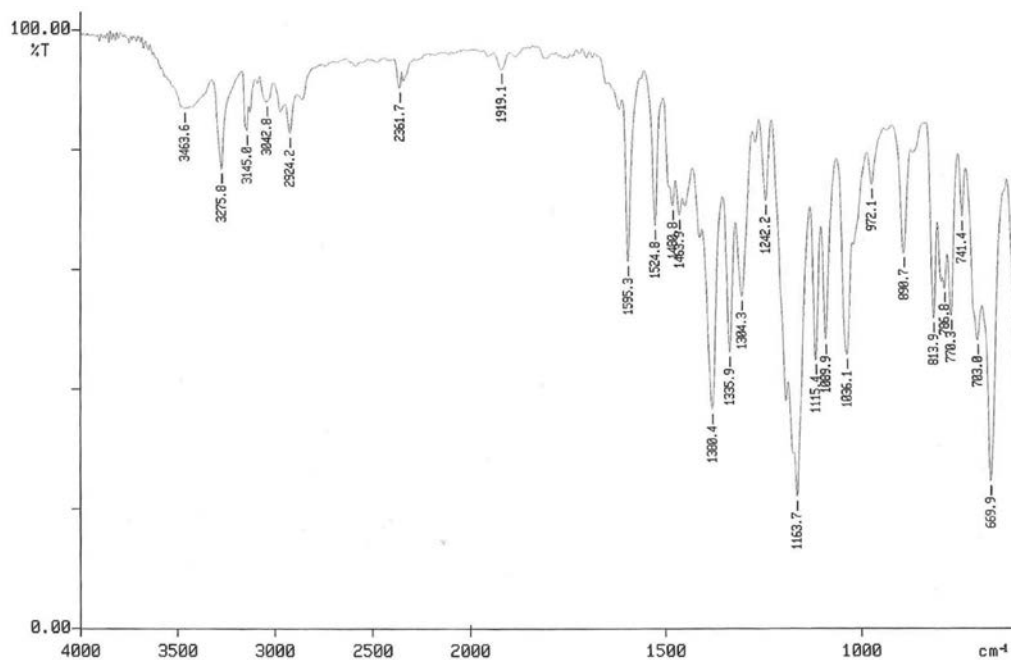


Figure S1. IR spectrum (KBr) of derivative 1a.

*e-mail: juliusborges@yahoo.com.br

†in Memoriam

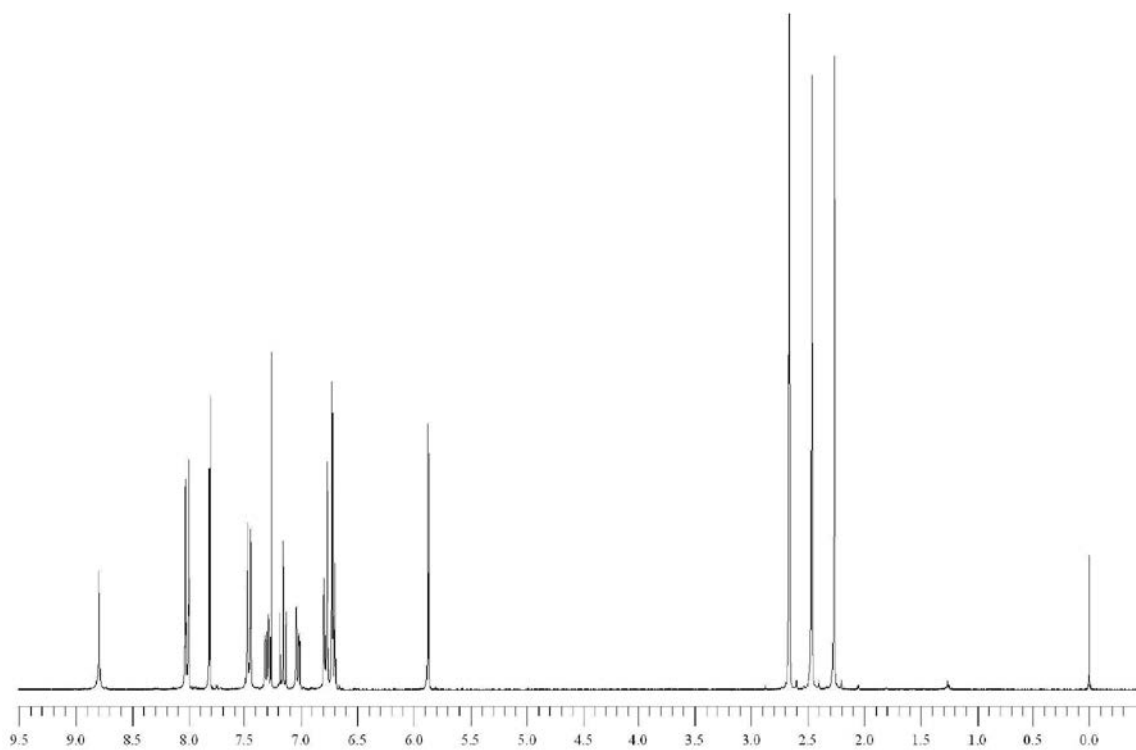


Figure S2. ¹H NMR spectrum (300.00 MHz; CDCl₃) of derivative **1a**.

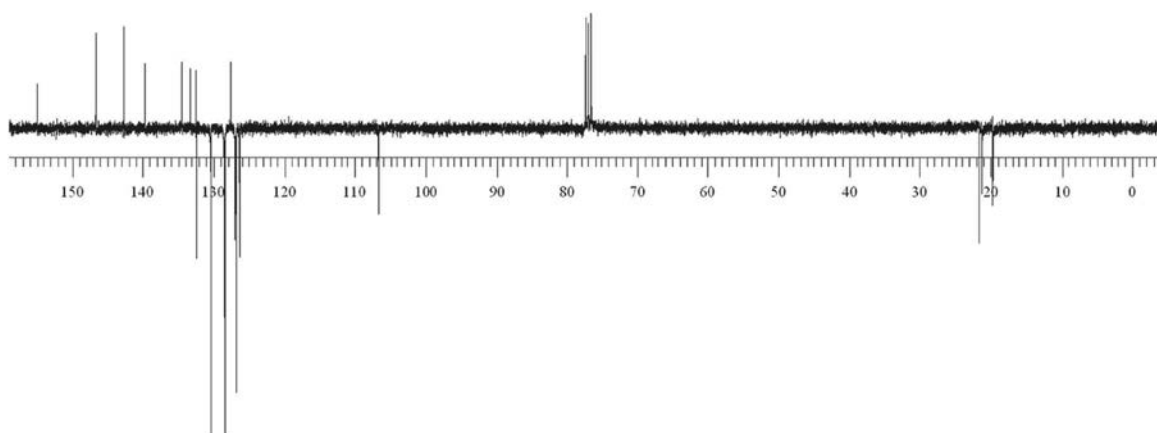


Figure S3. ¹³C NMR (75.00 MHz; CDCl₃) spectrum of derivative **1a**.

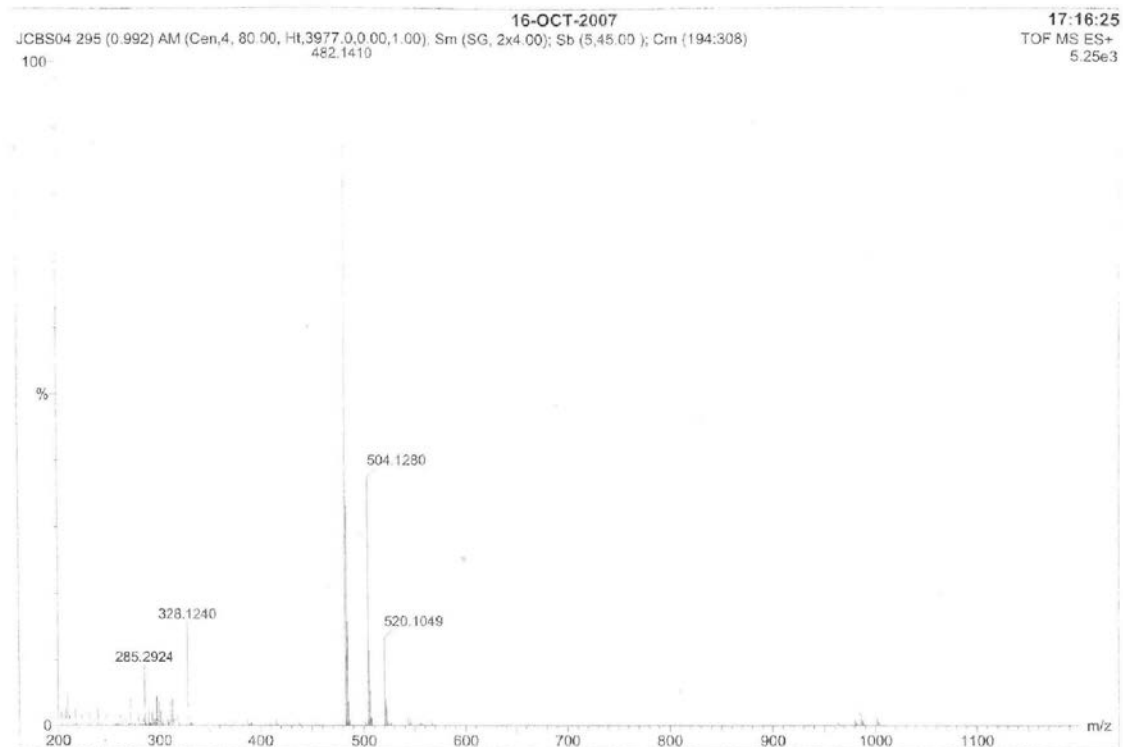


Figure S4. HR-MS spectrum (ESI/MS) of derivative 1a.

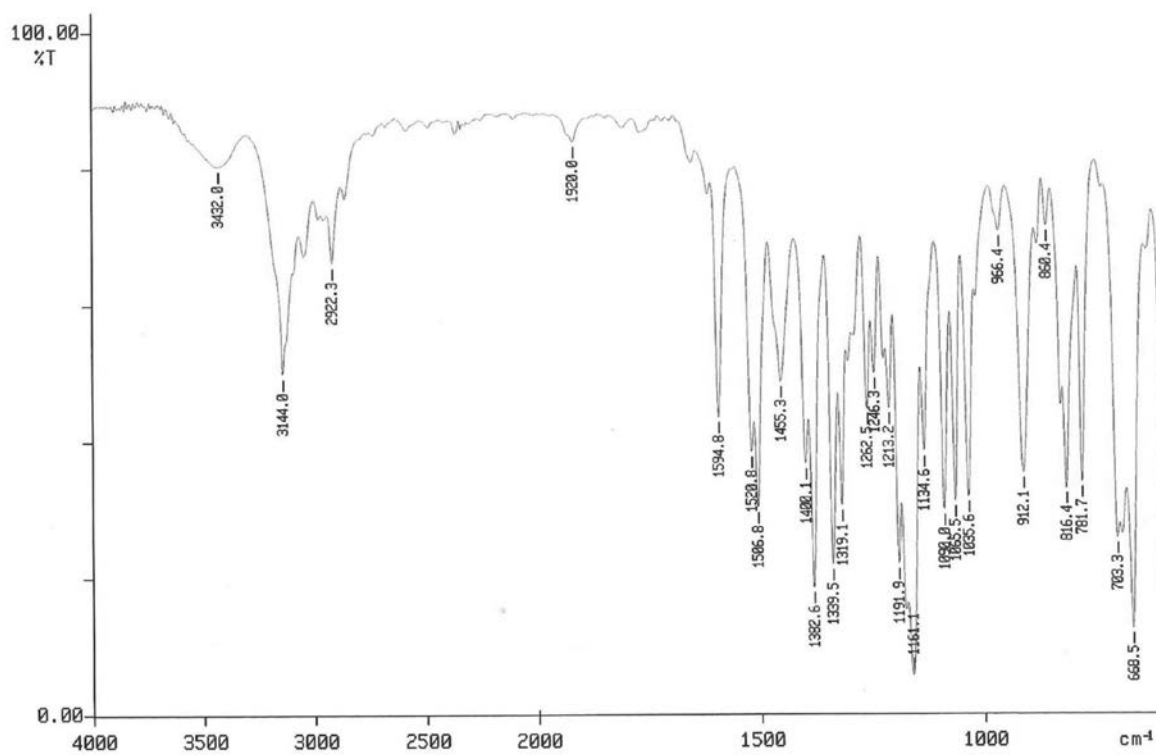


Figure S5. IR spectrum (KBr) of derivative 1b.

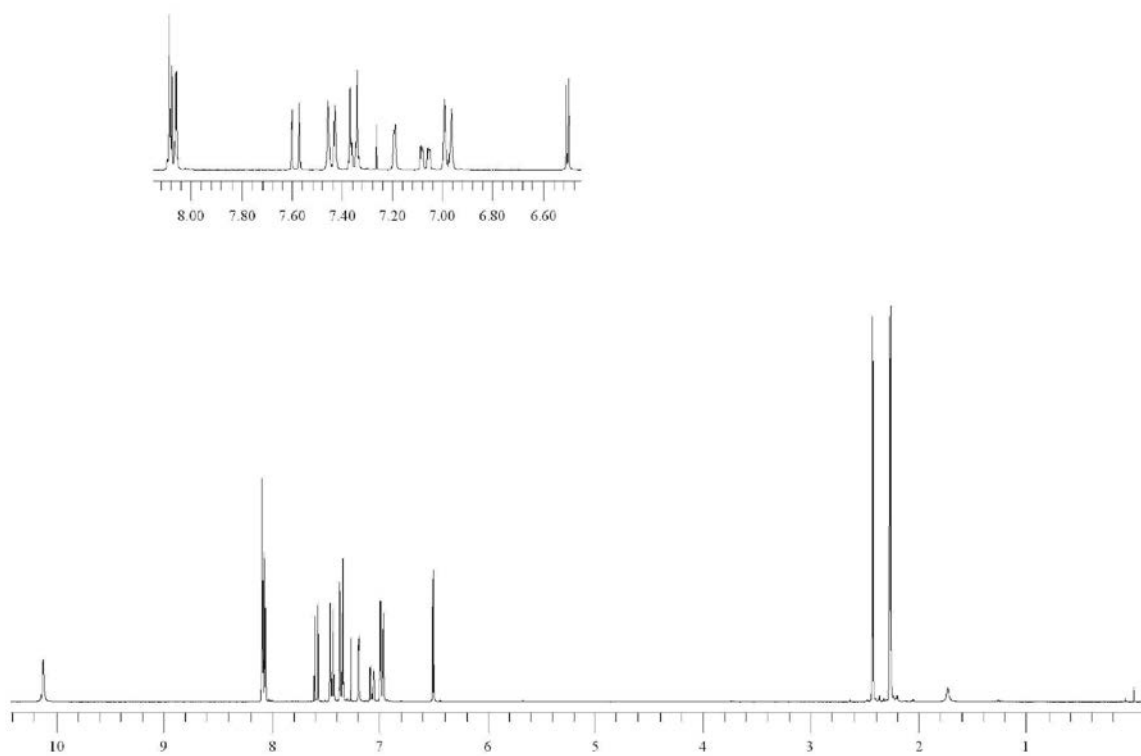


Figure S6. ¹H NMR spectrum (300.00 MHz; CDCl₃) of derivative **1b**.

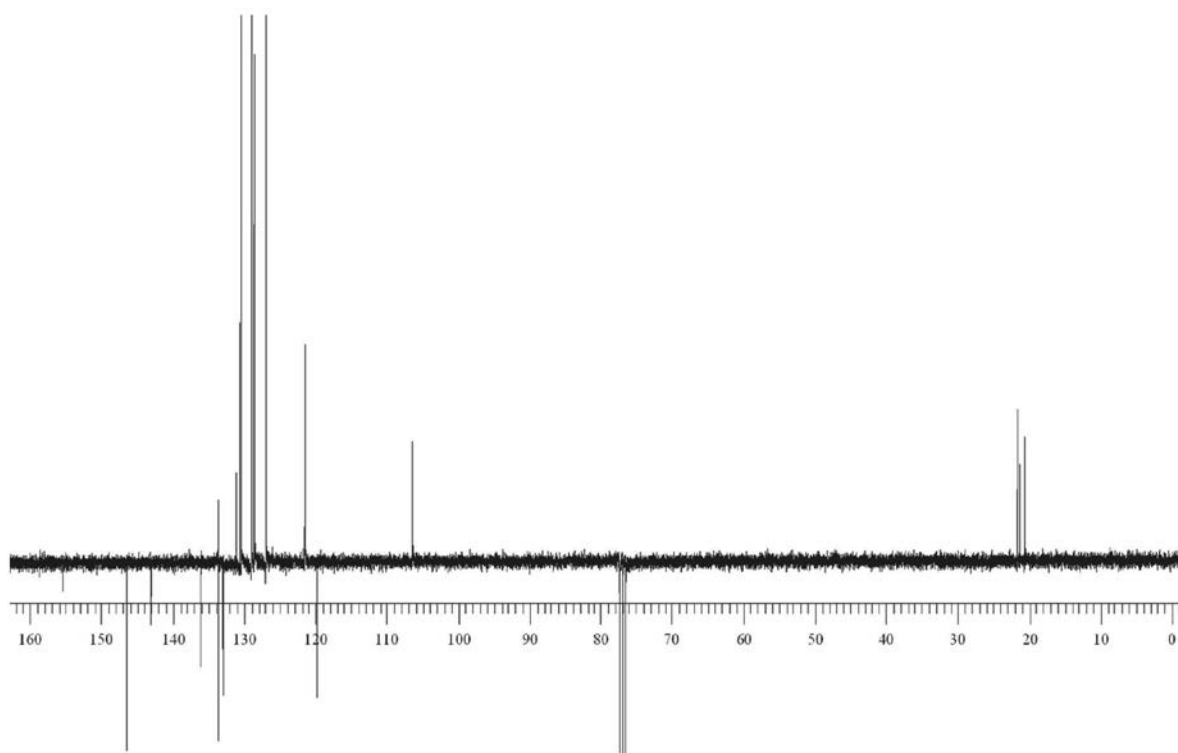


Figure S7. ¹³C NMR spectrum (75.00 MHz; CDCl₃) of derivative **1b**.

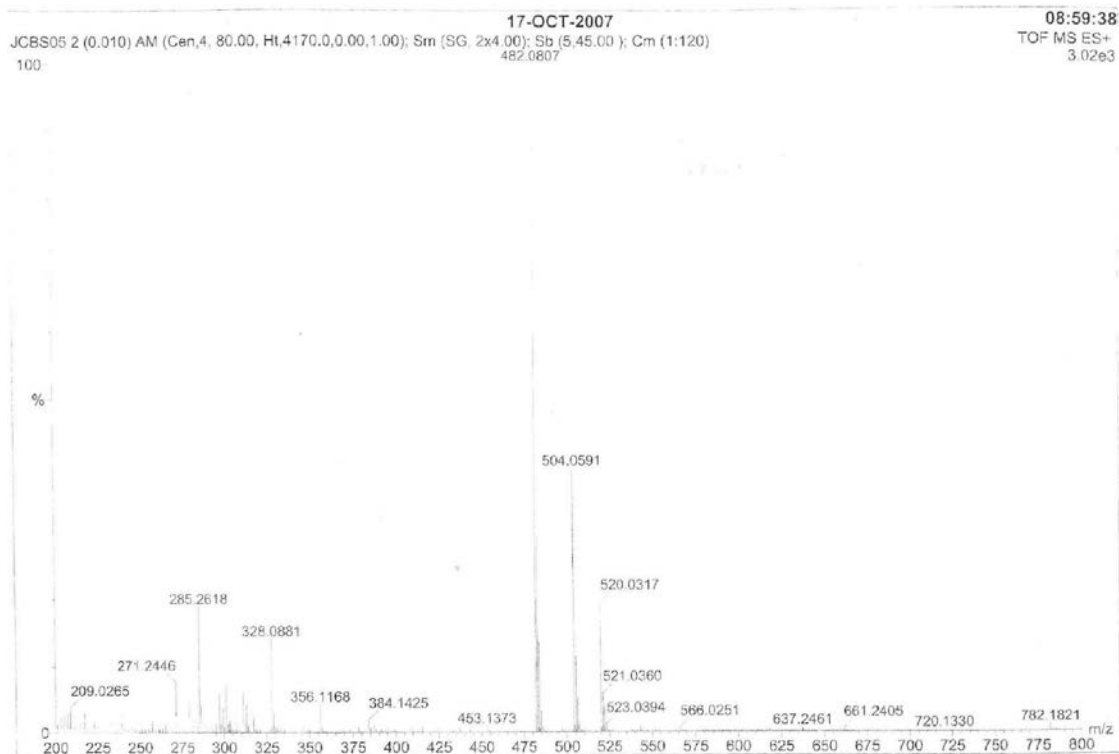


Figure S8. HR-MS spectrum (ESI/MS) of derivative 1b.

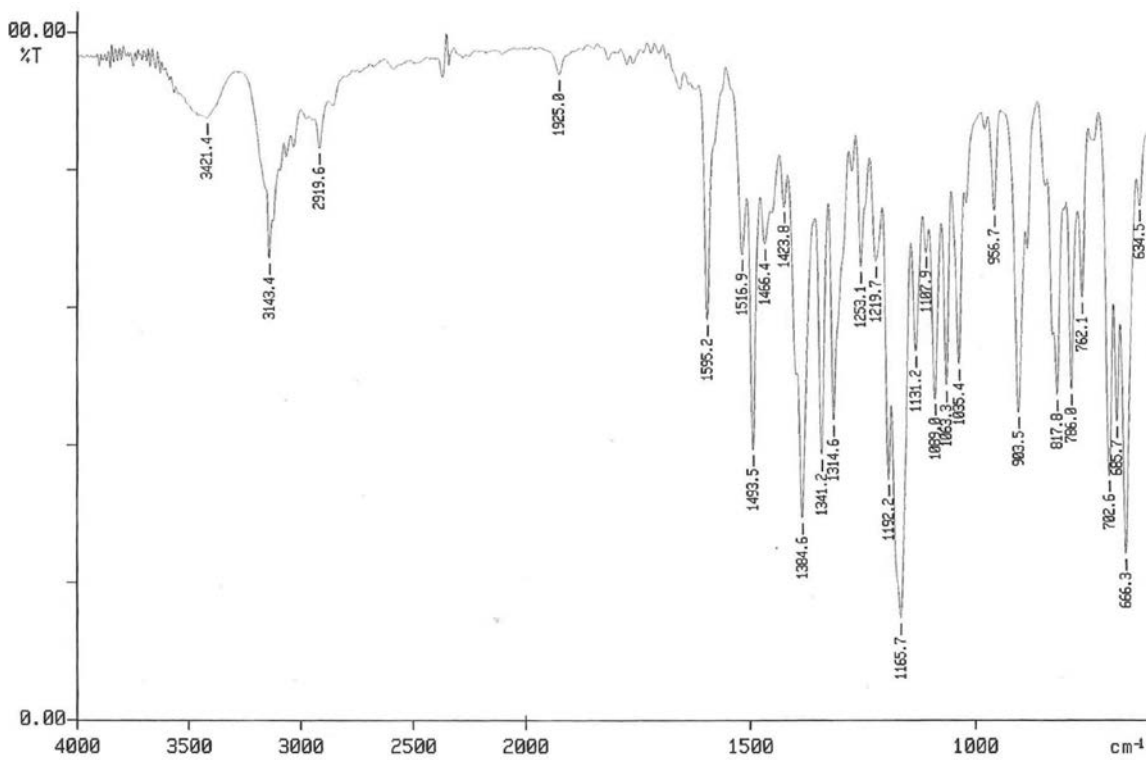


Figure S9. IR spectrum (KBr) of derivative 1c.

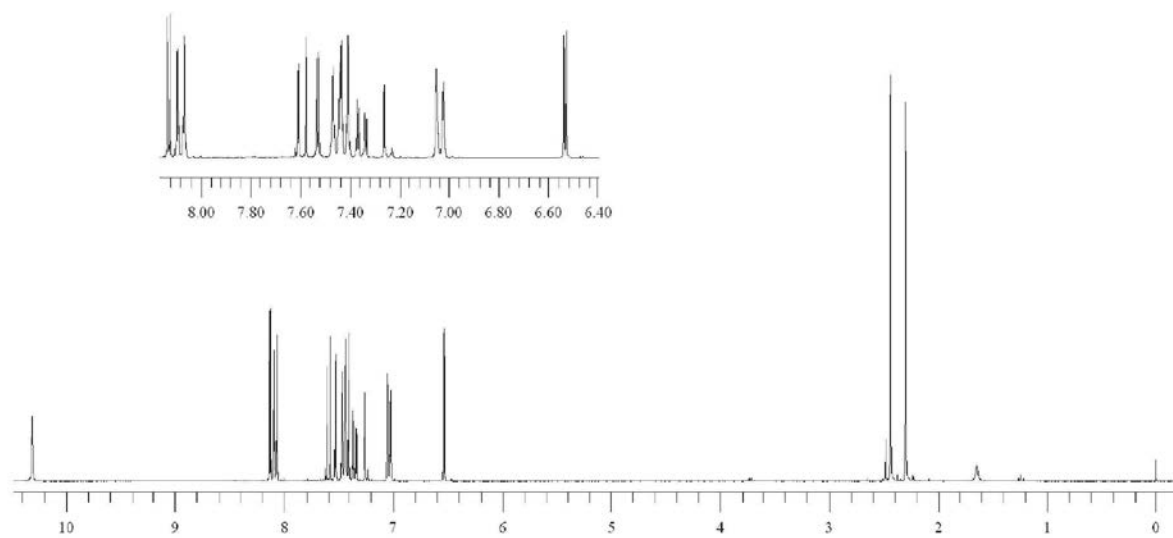


Figure S10. ¹H NMR spectrum (300.00 MHz; CDCl₃) of derivative **1c**.

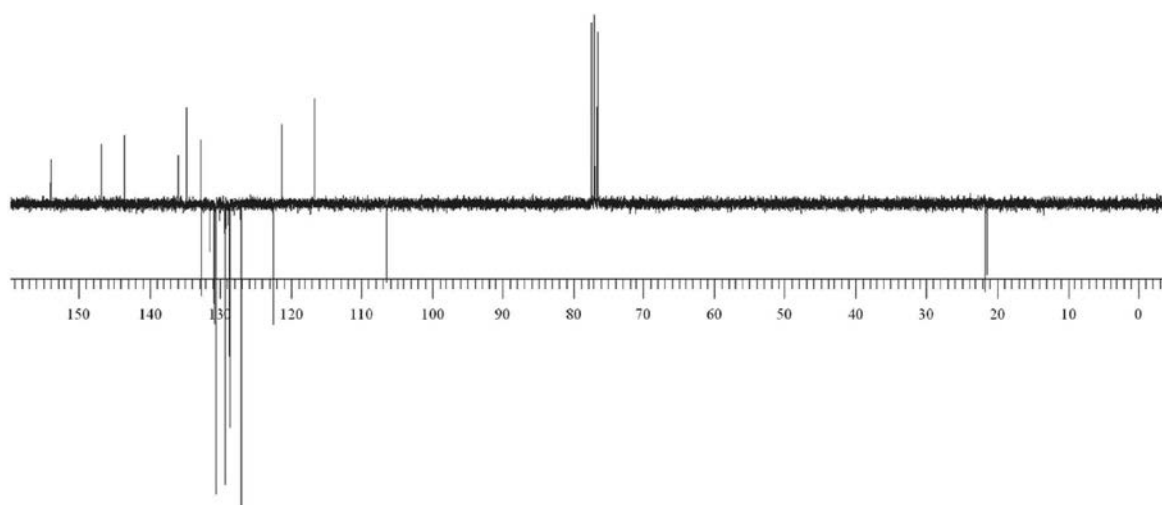


Figure S11. ¹³C NMR spectrum (75.00 MHz; CDCl₃) of derivative **1c**.

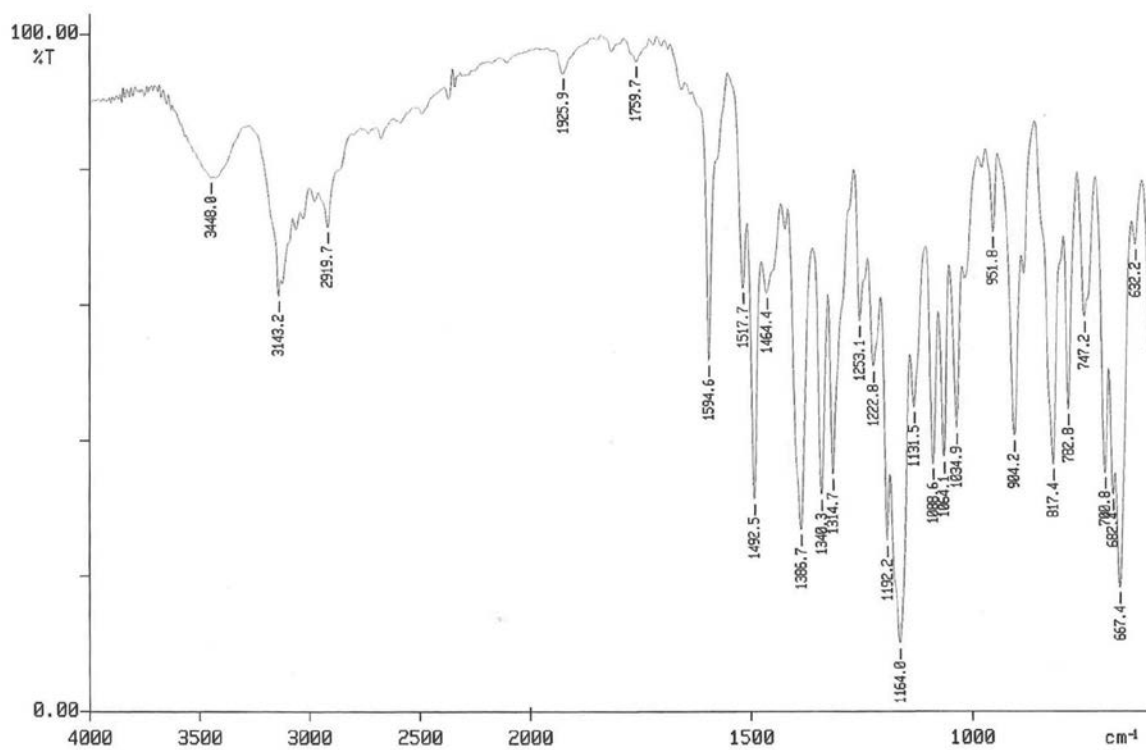


Figure S12. IR spectrum (KBr) of derivative **1d**.

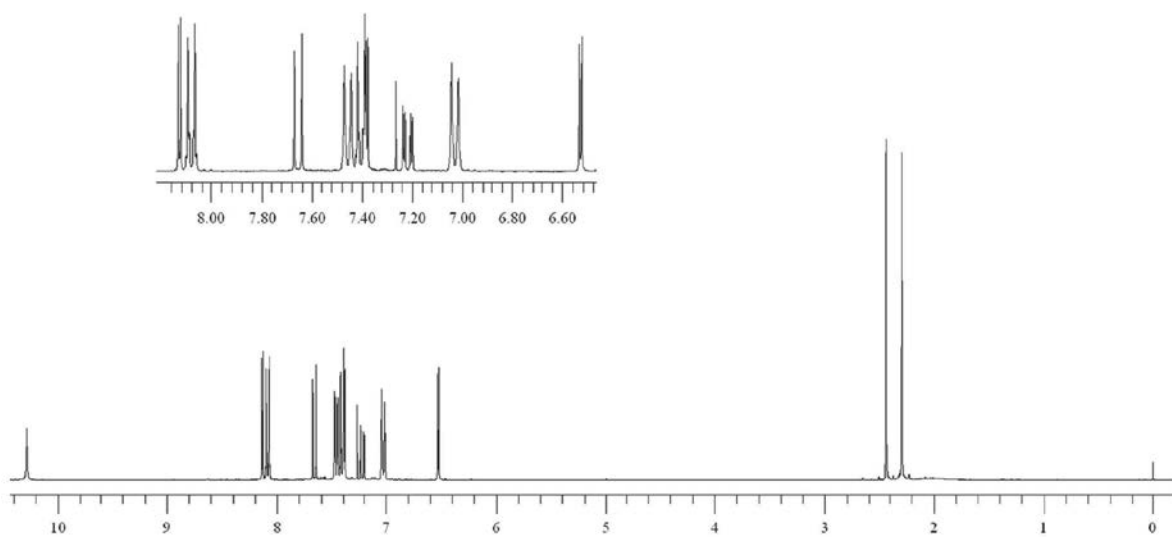


Figure S13. ¹H NMR spectrum (300.00 MHz; CDCl₃) of derivative **1d**.

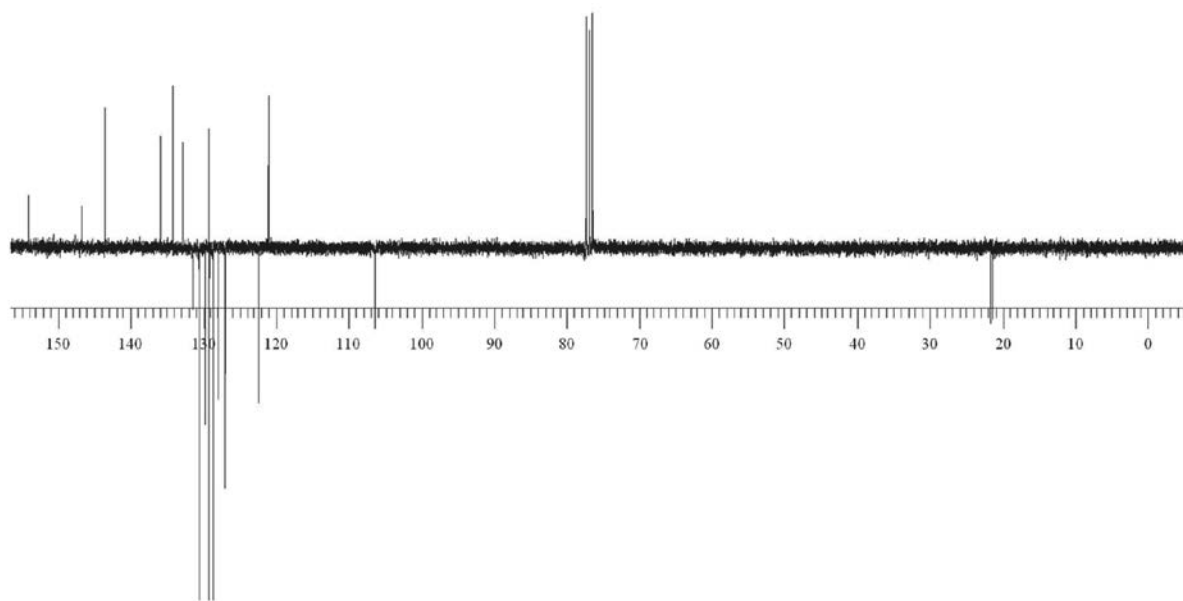


Figure S14. ¹³C NMR spectrum (75.00 MHz; CDCl₃) of derivative **1d**.

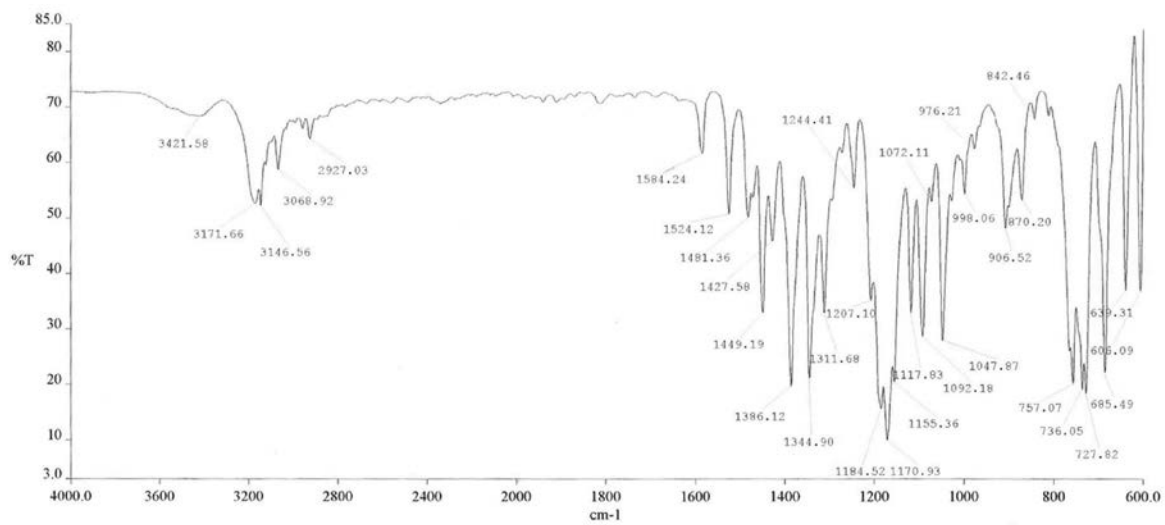


Figure S15. IR spectrum (KBr) of derivative **1e**.

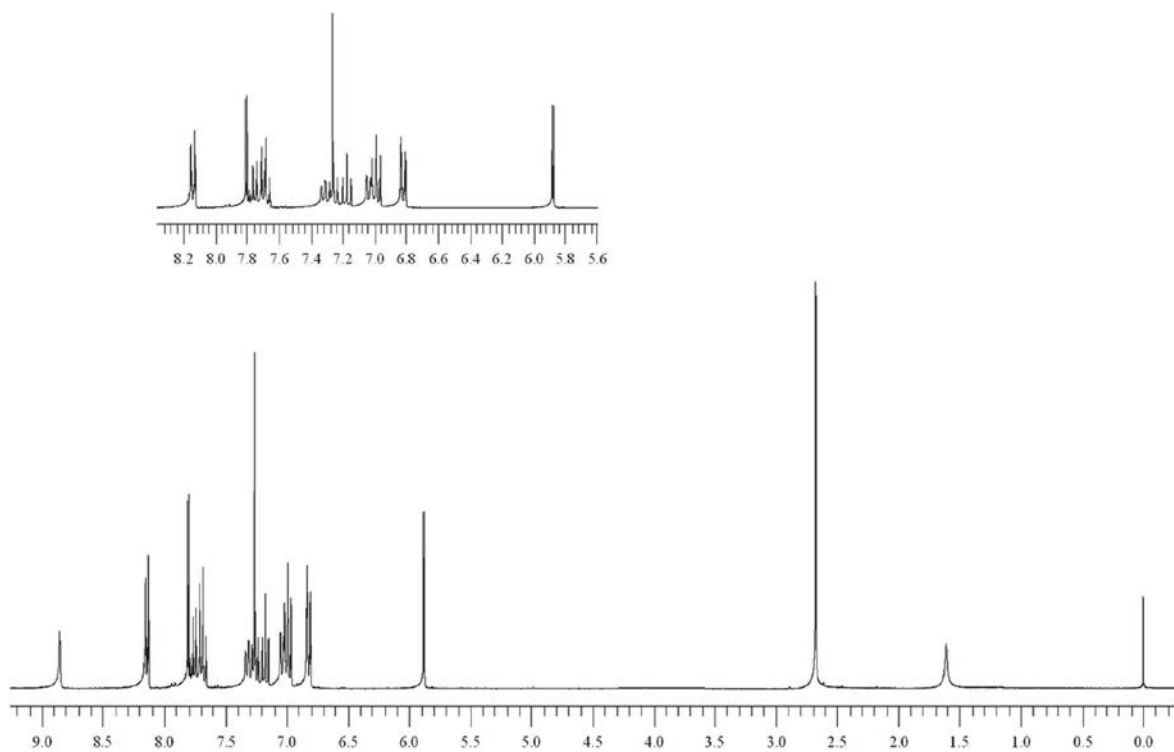


Figure S16. ¹H NMR spectrum (300.00 MHz; CDCl₃) of derivative **1e**.

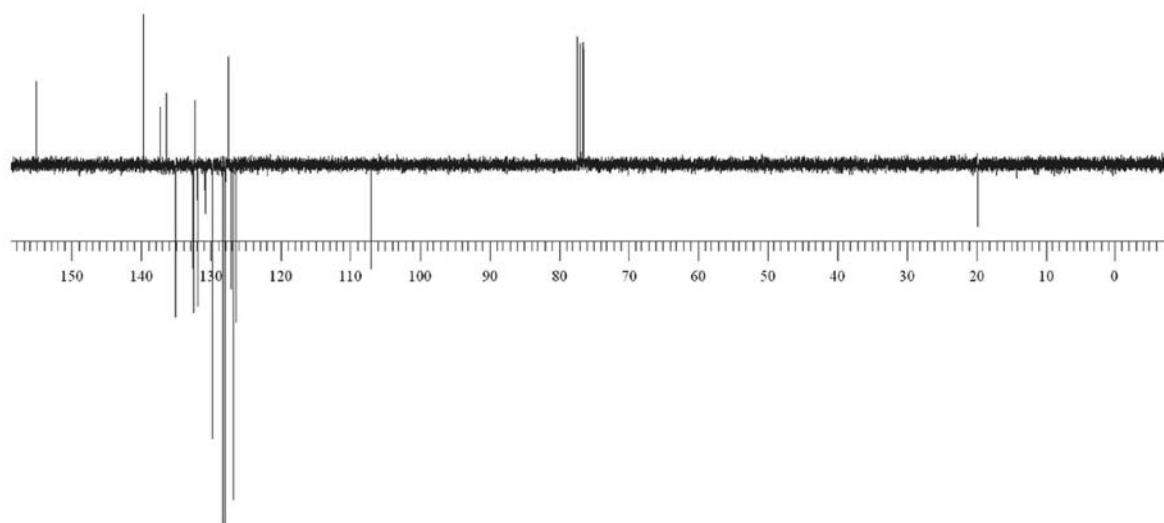


Figure S17. ¹³C NMR spectrum (75.00 MHz; CDCl₃) of derivative **1e**.

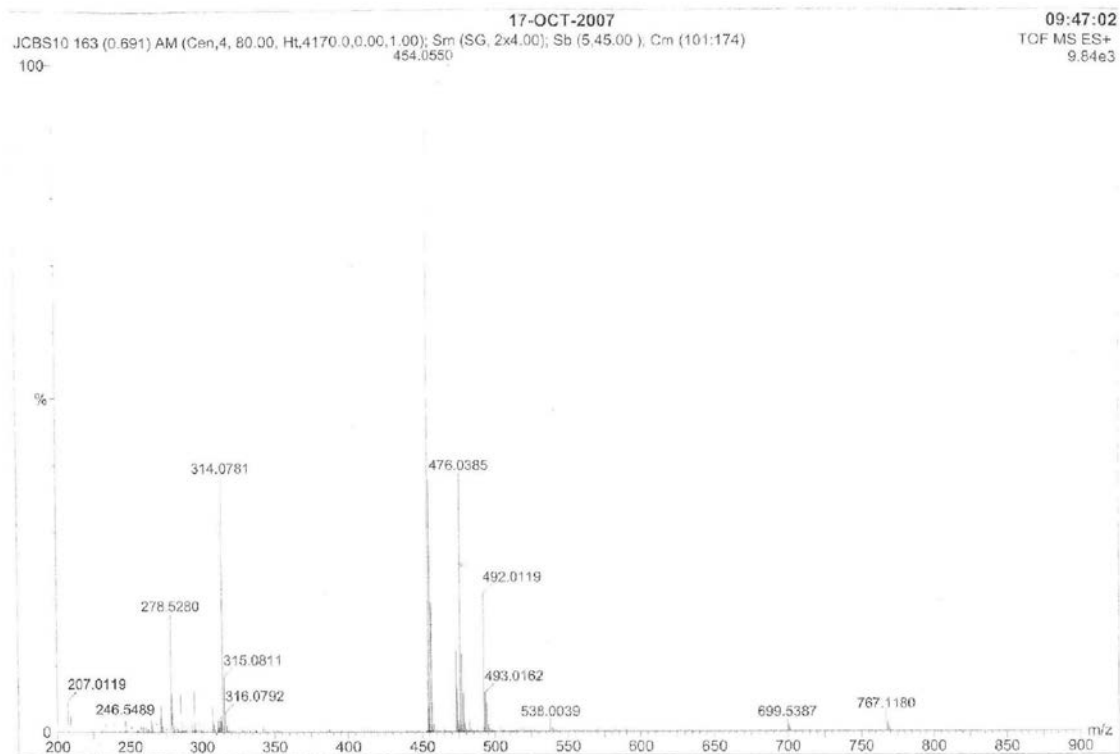


Figure S18. HR-MS spectrum (ESI/MS) of derivative **1e**.

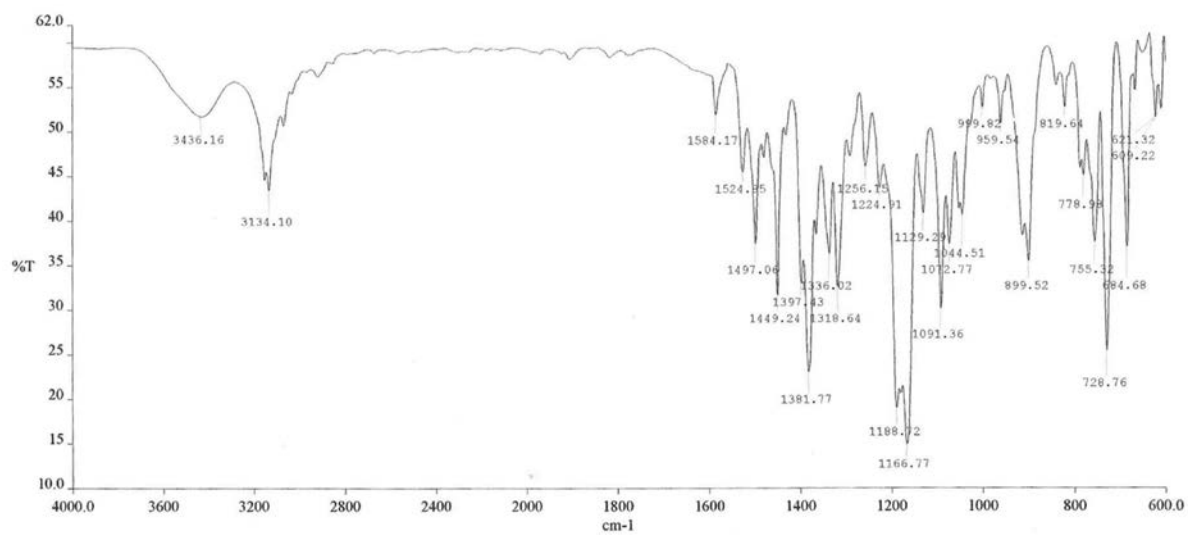


Figure S19. IR spectrum (KBr) of derivative **1f**.

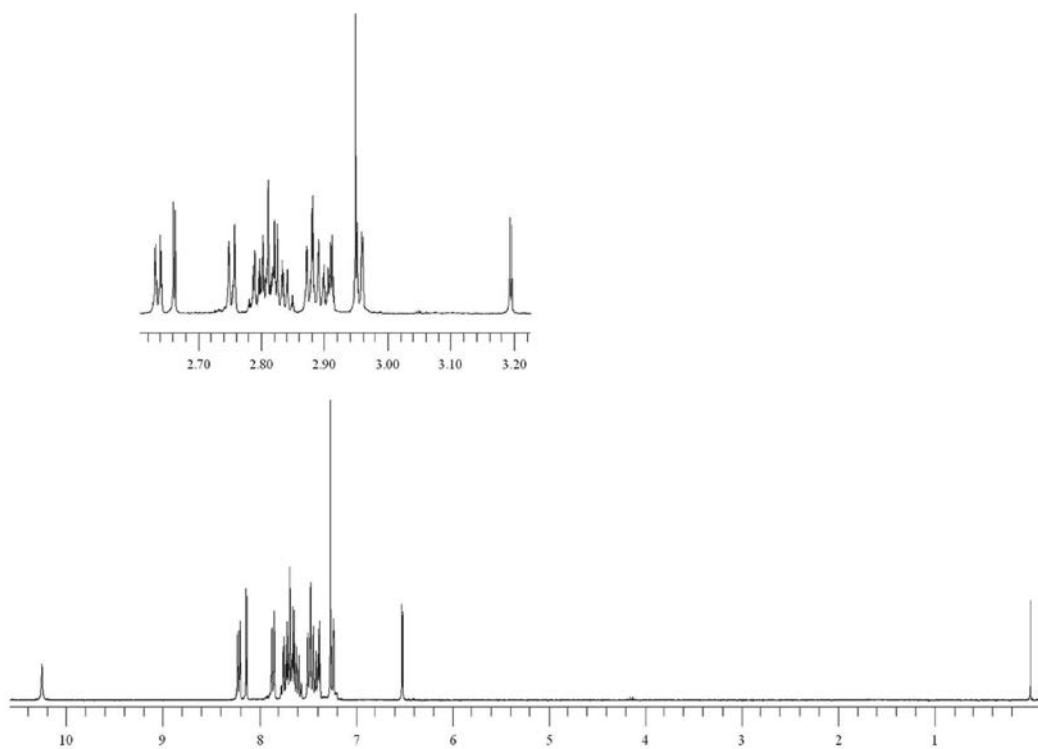


Figure S20. ¹H NMR spectrum (300.00 MHz; CDCl₃) of derivative **1f**.

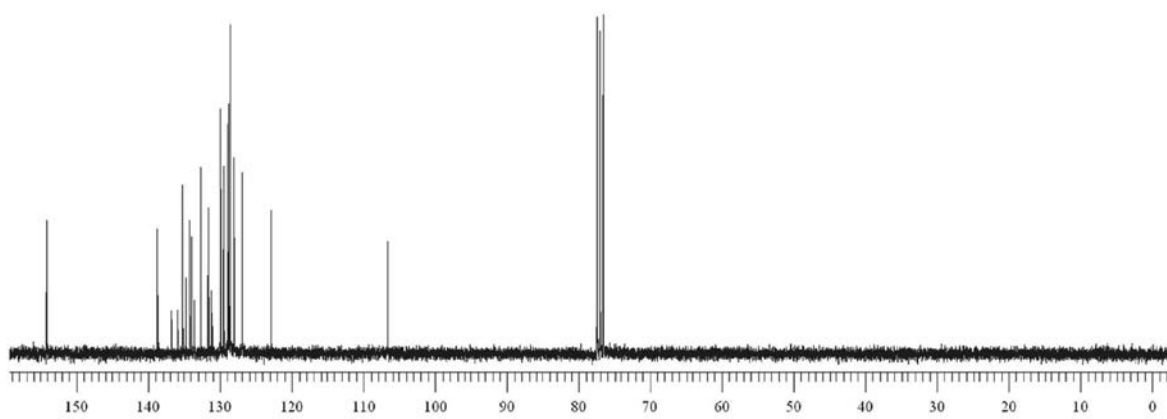


Figure S21. ¹³C NMR spectrum (75.00 MHz; CDCl₃) of derivative **1f**.

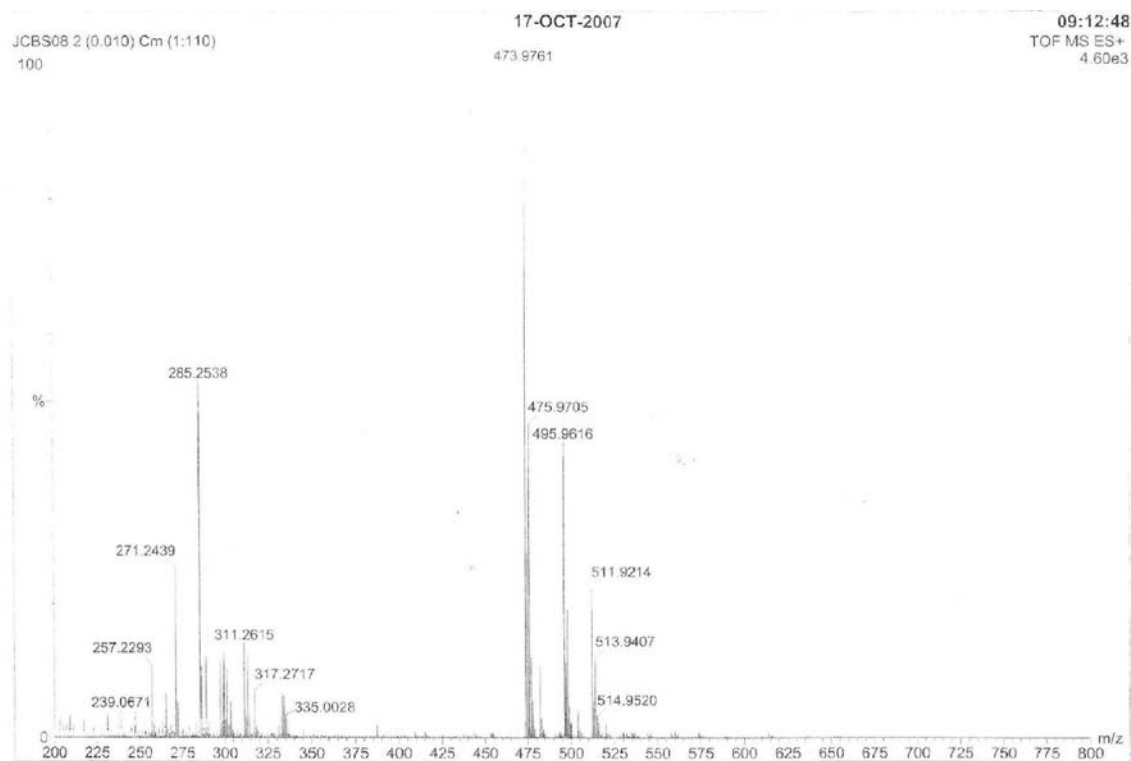


Figure S22. HR-MS spectrum (ESI/MS) of derivative **1f**.

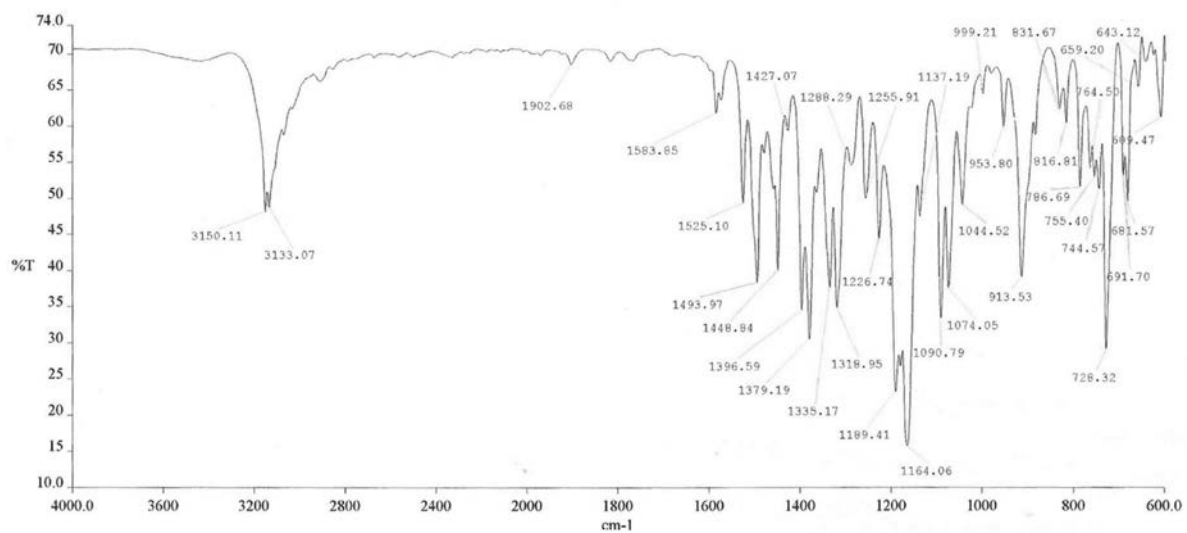


Figure S23. IR spectrum (KBr) of derivative **1g**.

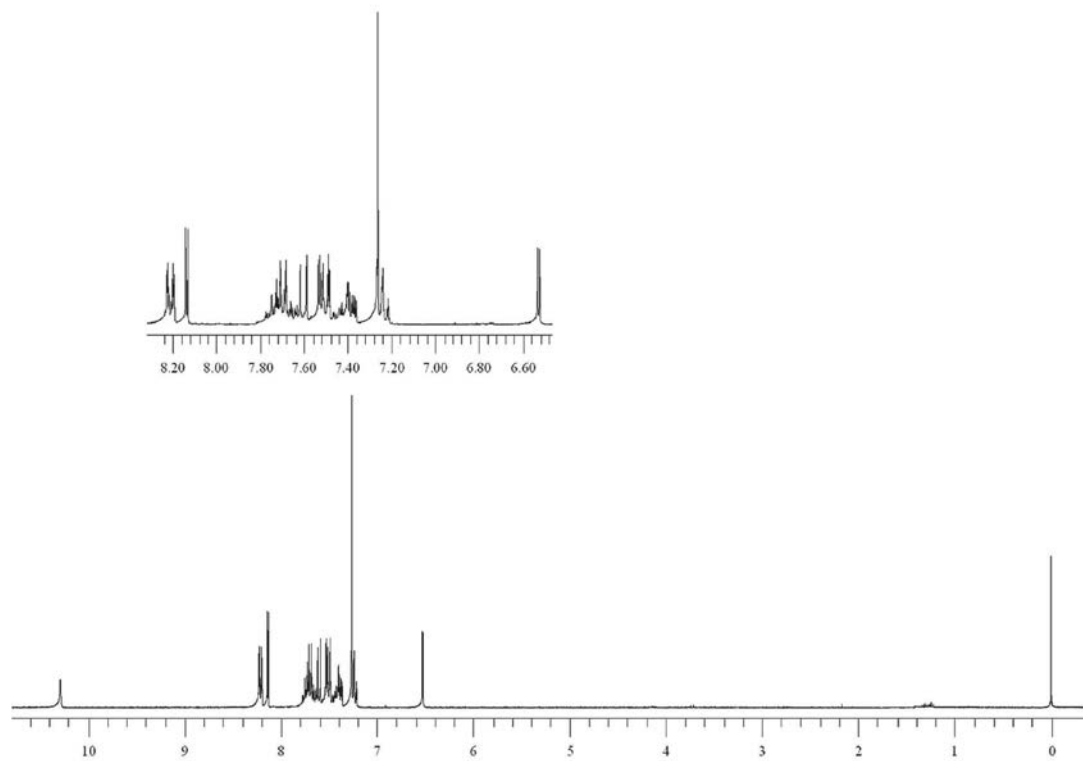


Figure S24. ¹H NMR spectrum (300.00 MHz; CDCl₃) of derivative **1g**.

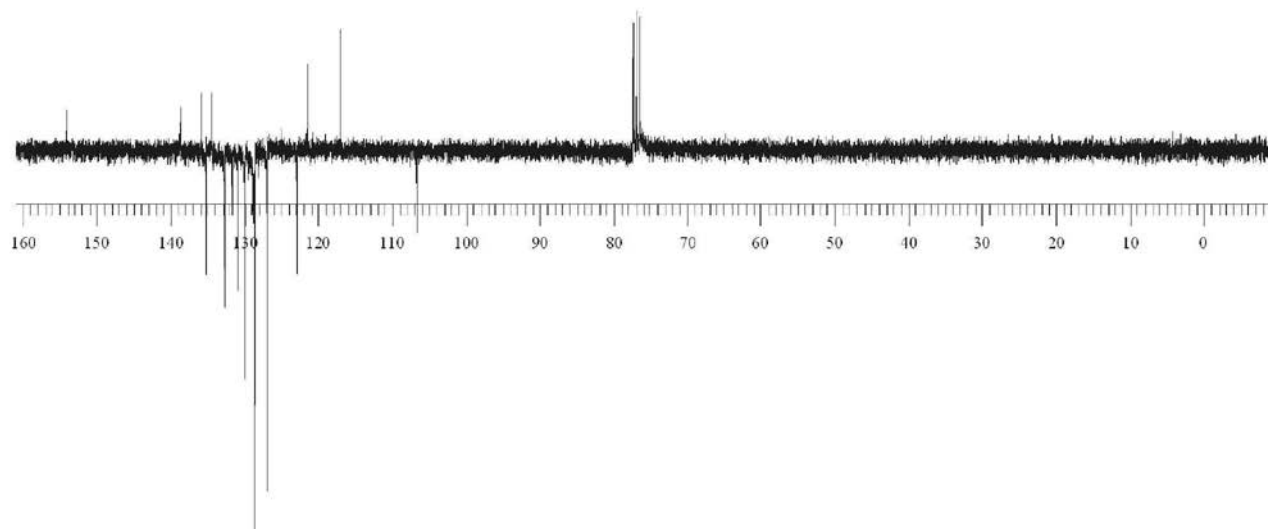


Figure S25. ¹³C NMR spectrum (75.00 MHz; CDCl₃) of derivative **1g**.

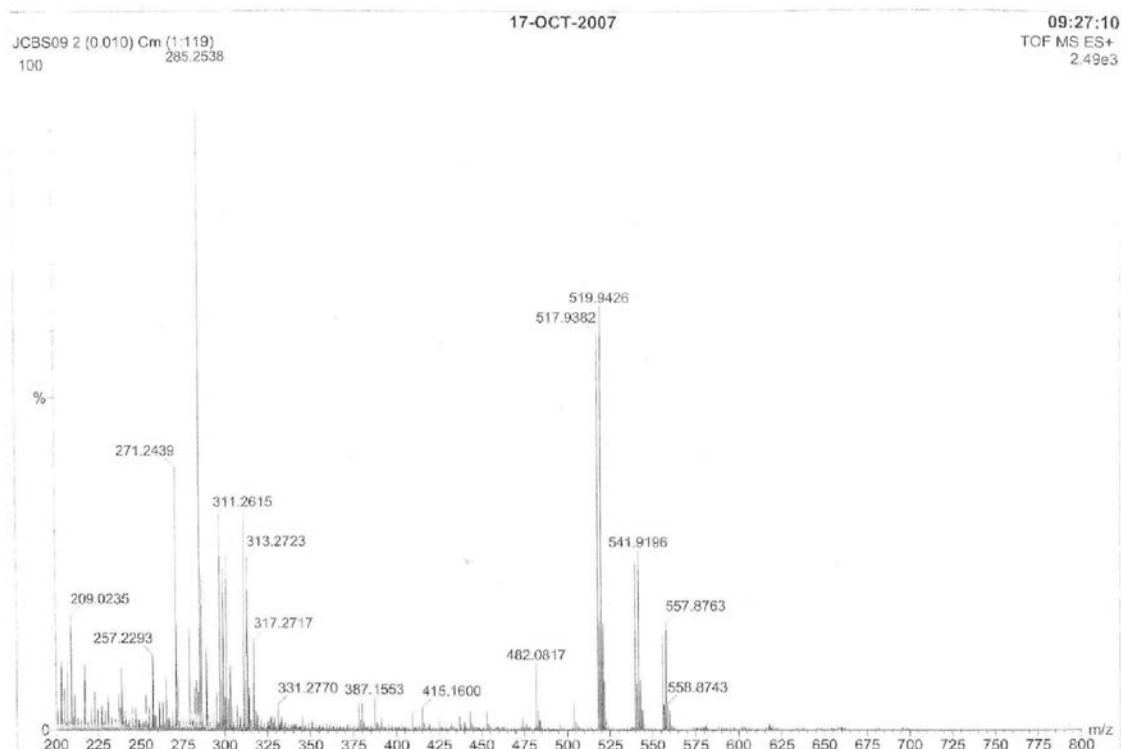
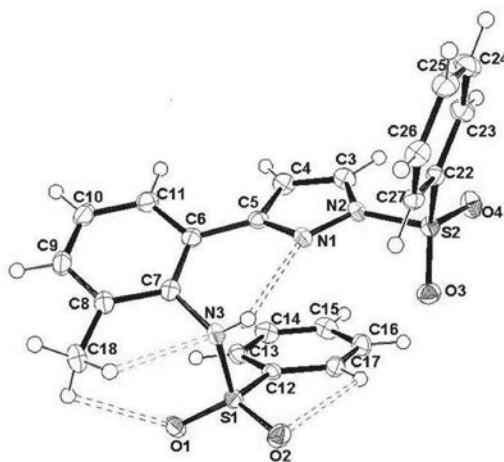


Figure S26. HR-MS spectrum (ESI/MS) of derivative **1g**.

Crystallographic Data



Crystal data collected at 120(2)K, colourless crystal: 0.36 × 0.32 × 0.12 mm. Formula: C₂₂H₁₉N₃O₄S₂; formula weight = 453.52 g mol⁻¹; monoclinic, *P*2₁/*c*; *a* = 13.0172(4) Å, *b* = 8.1423(3) Å, *c* = 19.3454 Å, β = 94.278(2)°; *d*_{calc} = 1.473 Mg m⁻³; *Z* = 4; *v* = 2044.71(11) Å³; 4688 independent reflections [*R*(int) = 0.0471]; 3508 observed reflections [*I* > 2*s*(*I*)]; parameters refined 290; number of restraints 3; *R*(*F*) 0.039 (obs. data); largest diff. peak 0.28 e Å⁻³. Atomic coordinates, bond lengths, angles and thermal parameters have been deposited at the Cambridge Crystallographic Data Centre, under deposition number CCDC 708840.