

Application of the Negishi Reaction in the Synthesis of Thiophene-Based Lignans Analogues with Leishmanicidal Effects

Mônica F. Z. J. Amaral,^a Daniel R. Callejon,^{a,b} Thalita B. Riul,^c Marcelo D. Baruffi,^c
Fabiano T. Toledo,^a Norberto P. Lopes^a and Giuliano C. Clososki^{*,a}

^aNúcleo de Pesquisa em Produtos Naturais e Sintéticos (NPPNS), Faculdade de Ciências Farmacêuticas de Ribeirão Preto (FCFRP), Universidade de São Paulo (USP), Av. Café s/n, 14040-903 Ribeirão Preto-SP, Brazil

^bLychnoflora Pesquisa e Desenvolvimento em Produtos Naturais LTDA, 14030-090 Ribeirão Preto-SP, Brazil

^cDepartamento de Análises Clínicas, Faculdade de Ciências Farmacêuticas de Ribeirão Preto (FCFRP), Universidade de São Paulo (USP), Av. Café s/n, 14040-903 Ribeirão Preto-SP, Brazil

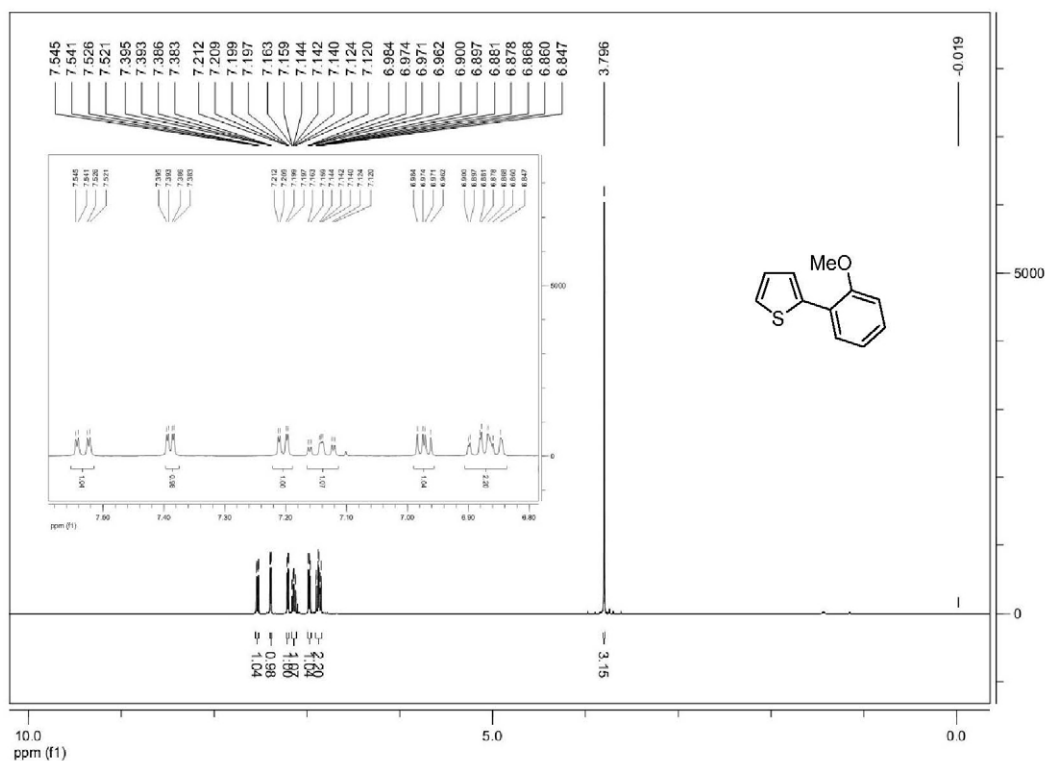


Figure S1. ¹H NMR spectrum (400 MHz, CDCl₃) of 2-(2-methoxyphenyl)thiophene (3a).

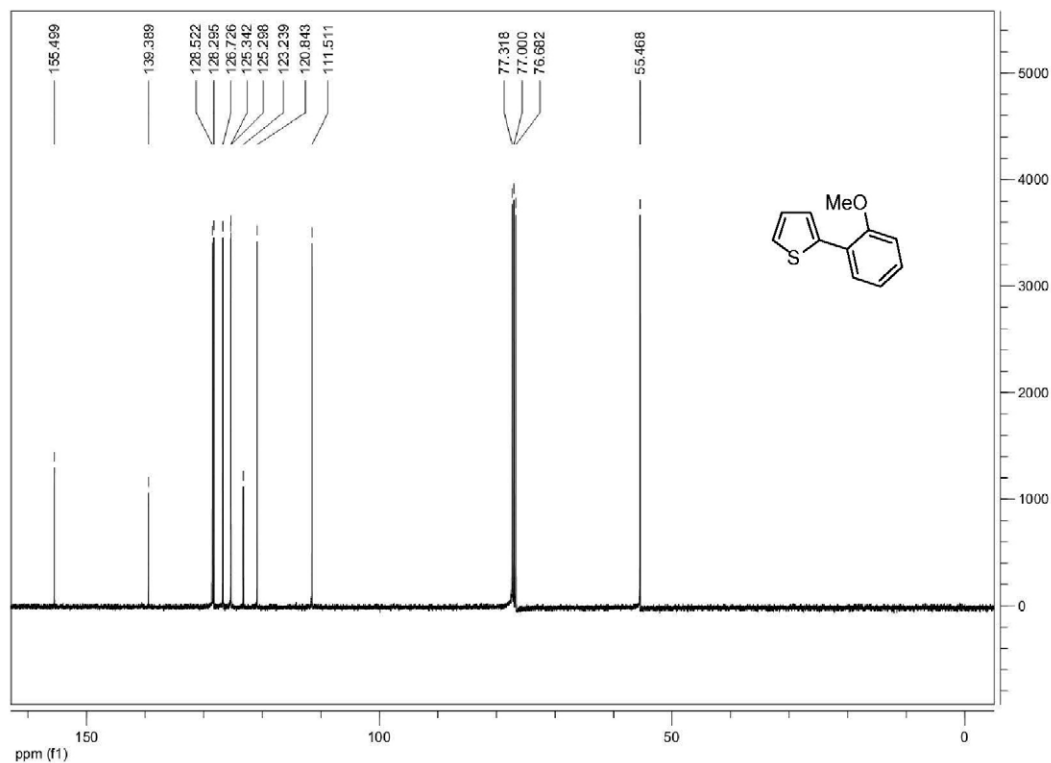


Figure S2. ¹³C NMR spectrum (100 MHz, CDCl₃) of 2-(2-methoxyphenyl)thiophene (**3a**).

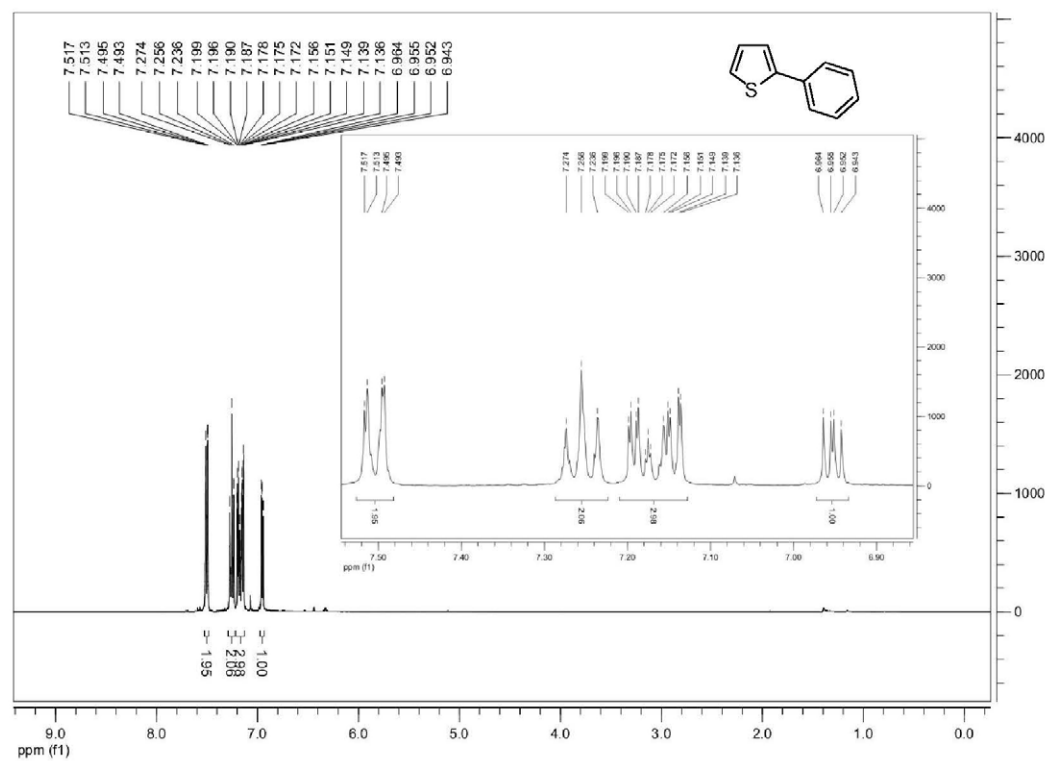


Figure S3. ¹H NMR spectrum (400 MHz, CDCl₃) of 2-phenylthiophene (**3b**).

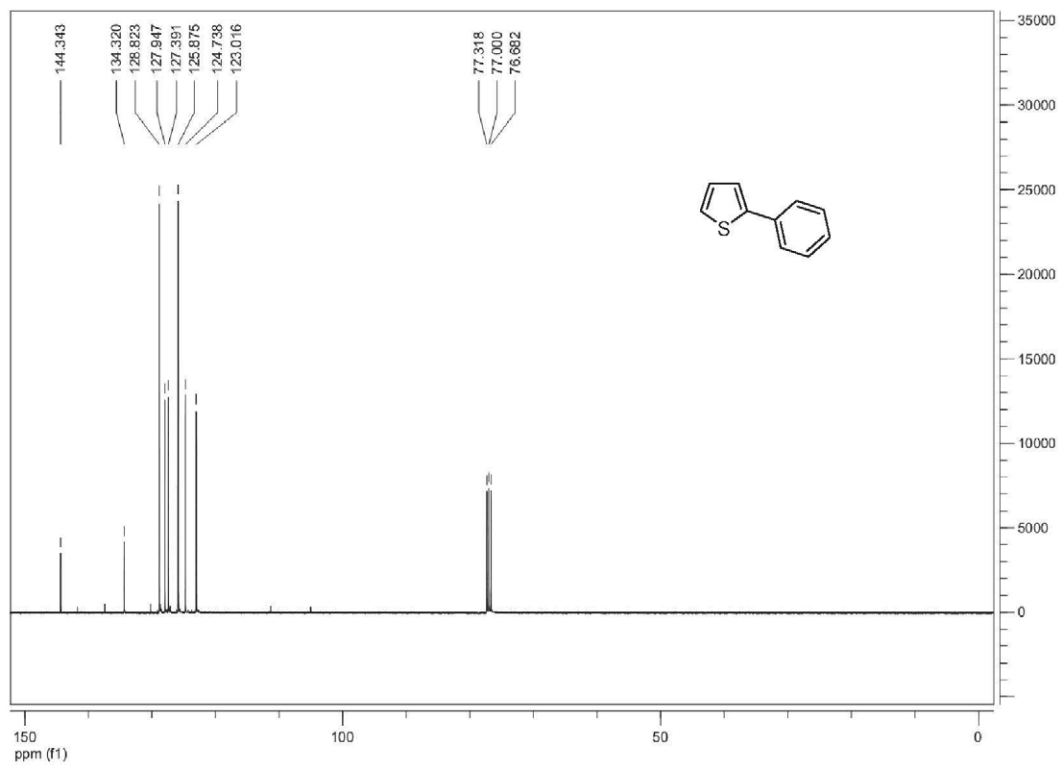


Figure S4. ¹³C NMR spectrum (100 MHz, CDCl₃) of 2-phenylthiophene (**3b**).

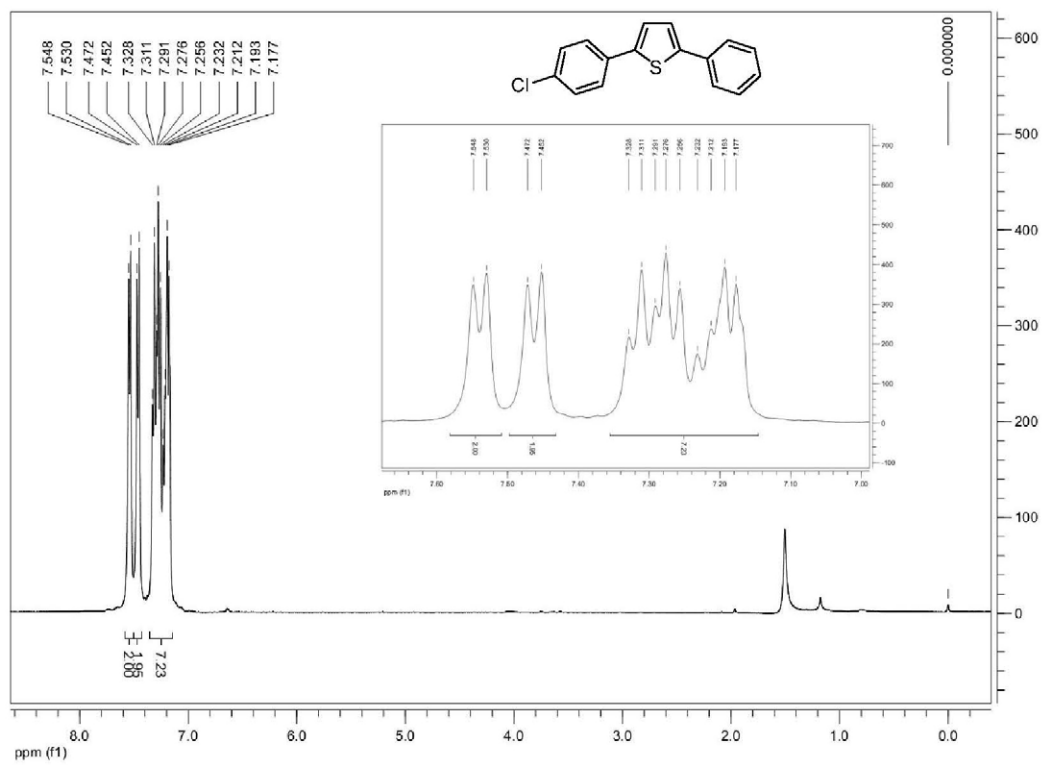


Figure S5. ¹H NMR spectrum (400 MHz, CDCl₃) of 2-(4-chlorophenyl)-5-phenylthiophene (**5a**).

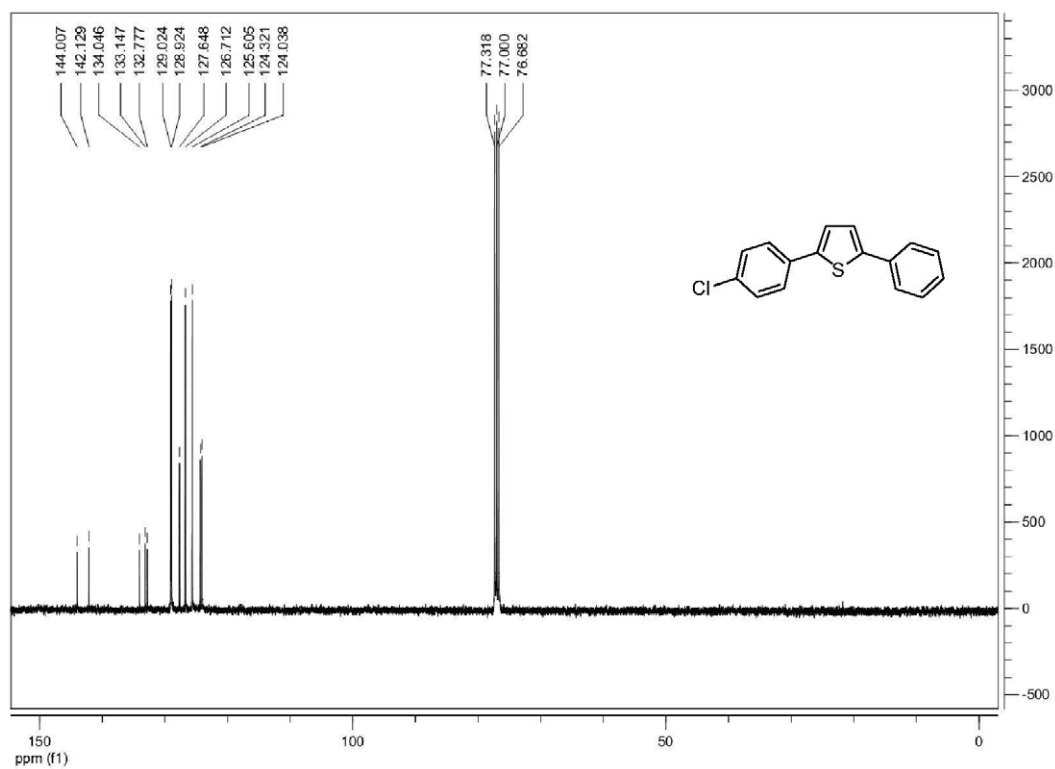


Figure S6. ¹³C NMR spectrum (100 MHz, CDCl₃) of 2-(4-chlorophenyl)-5-phenylthiophene (**5a**).

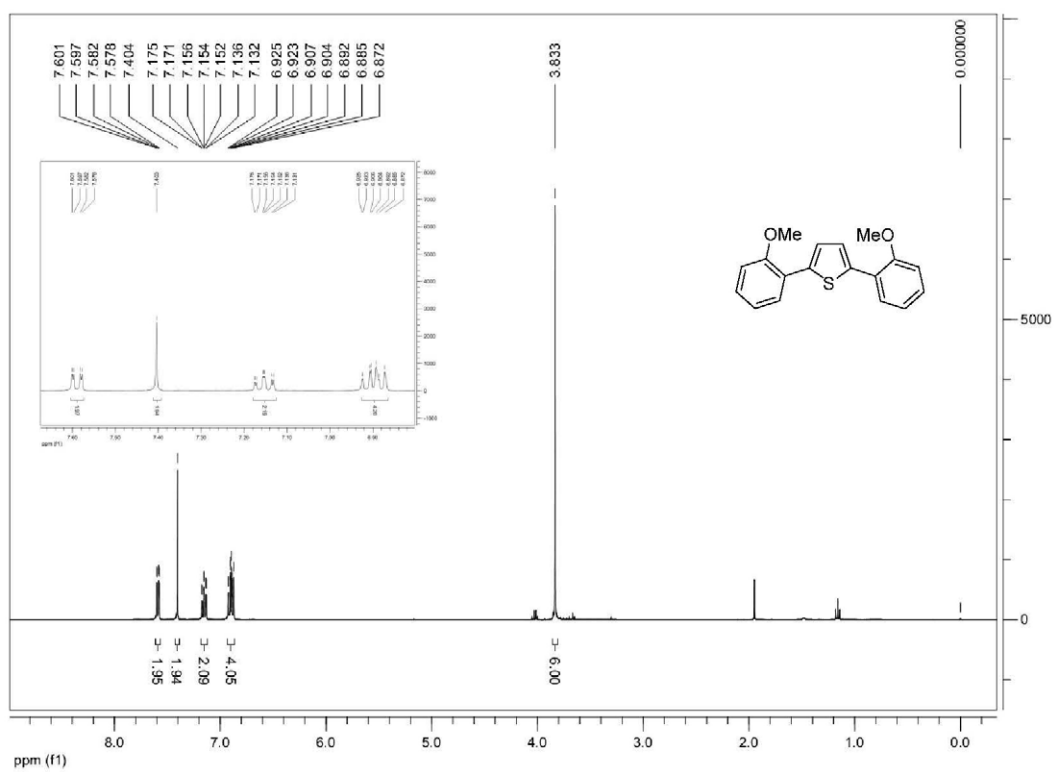


Figure S7. ¹H NMR spectrum (400 MHz, CDCl₃) of 2,5-bis(2-methoxyphenyl)thiophene (**5b**).

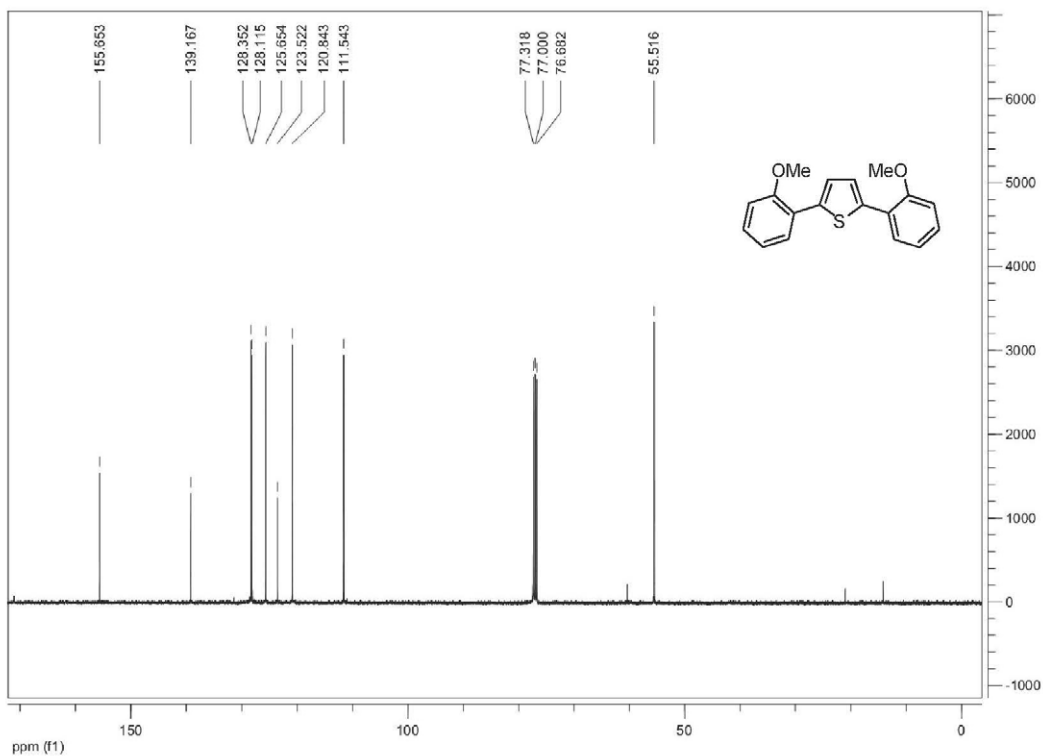


Figure S8. ^{13}C NMR spectrum (100 MHz, CDCl_3) of 2,5-bis(2-methoxyphenyl)thiophene (**5b**).

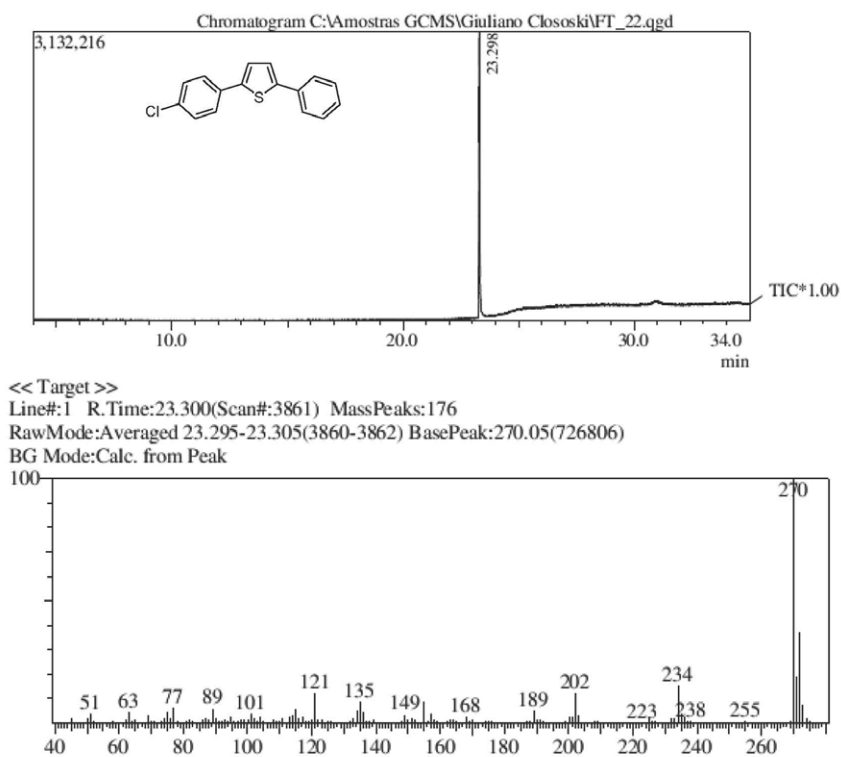


Figure S9. GC-MS analysis (ESI, 70 eV) of 2-(4-chlorophenyl)-5-phenylthiophene (**5a**).

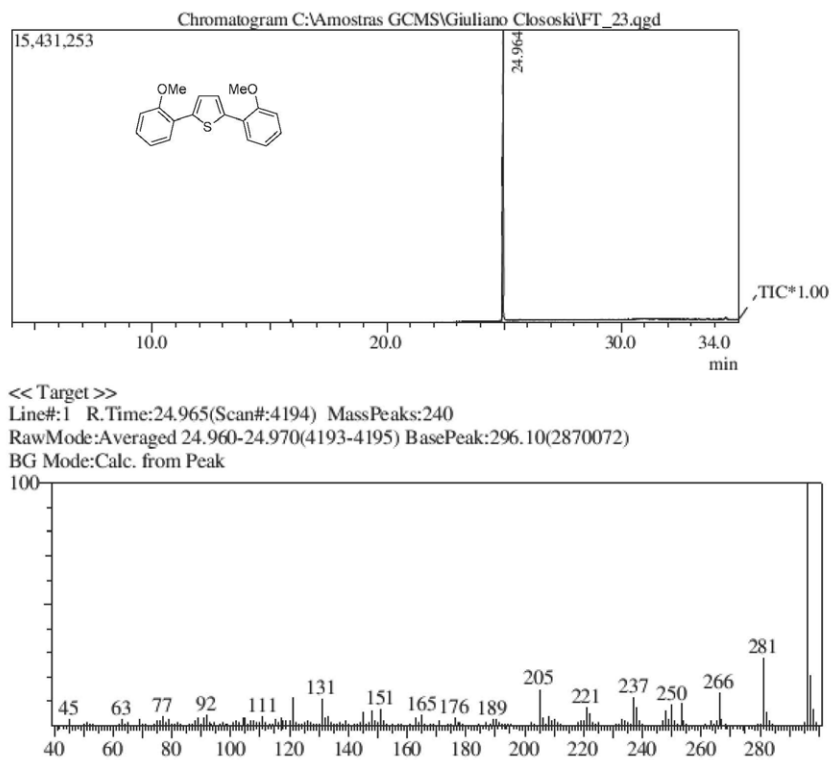


Figure S10. GC-MS analysis (ESI, 70 eV) of 2,5-bis(2-methoxyphenyl)thiophene (**5b**).