

# Supplementary Information

## Phenolic Compounds from the Roots of *Valeriana officinalis* var. *latifolia*

Peng-Cheng Wang,<sup>a</sup> Xin-Hui Ran,<sup>a</sup> Huai-Rong Luo,<sup>a</sup> Qing-Yun Ma,<sup>b</sup>  
Yu-Qing Liu,<sup>a</sup> Jun Zhou\*,<sup>a</sup> and You-Xing Zhao\*,<sup>b</sup>

<sup>a</sup>State Key Laboratory of Phytochemistry and Plant Resources in West China,  
Kunming Institute of Botany, Chinese Academy of Sciences,  
Kunming 650201, People's Republic of China

<sup>b</sup>Key Laboratory of Biology and Genetic Resources of Tropical Crops,  
Ministry of Agriculture, Institute of Tropical Bioscience and Biotechnology,  
Chinese Academy of Tropical Agriculture Sciences,  
Haikou 571101, People's Republic of China

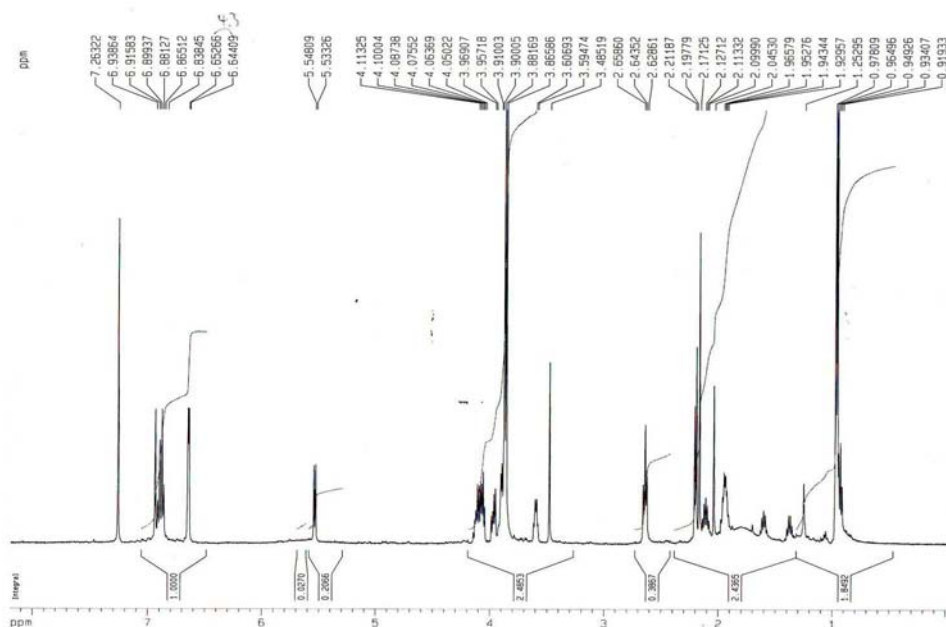


Figure S1. <sup>1</sup>H NMR spectrum (500 MHz) of compound **1** in CDCl<sub>3</sub>.

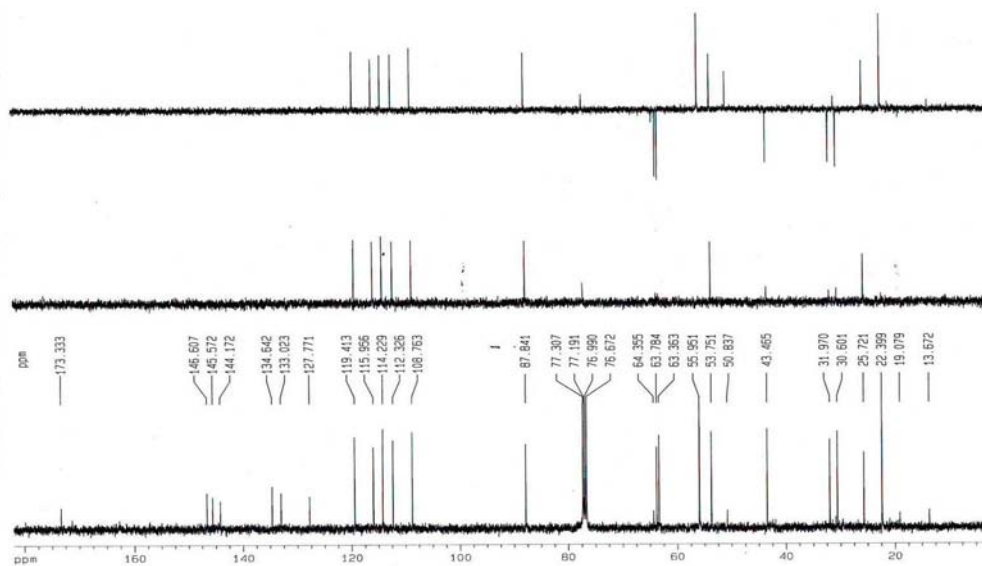


Figure S2. <sup>13</sup>C NMR and DEPT spectra (100 MHz) of compound 1 in CDCl<sub>3</sub>.

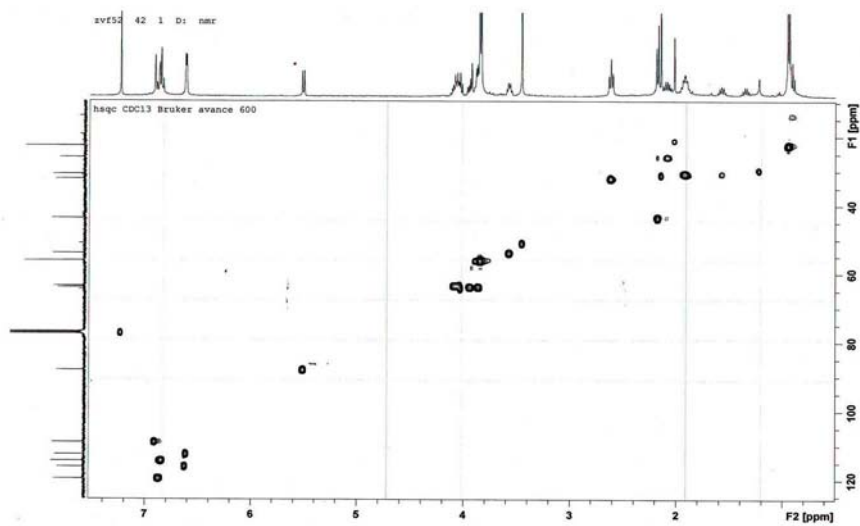


Figure S3. HSQC spectrum of compound 1 in CDCl<sub>3</sub>.

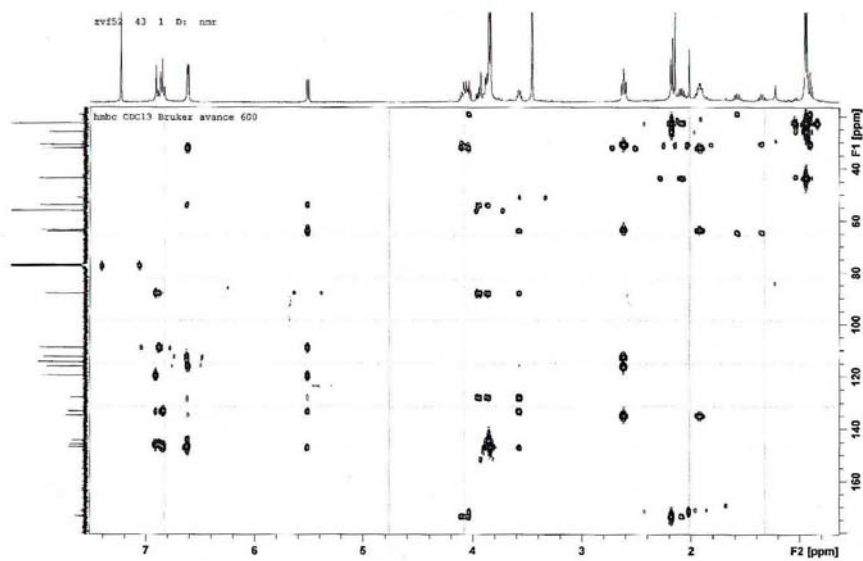


Figure S4. HMBC spectrum of compound **1** in CDCl<sub>3</sub>.

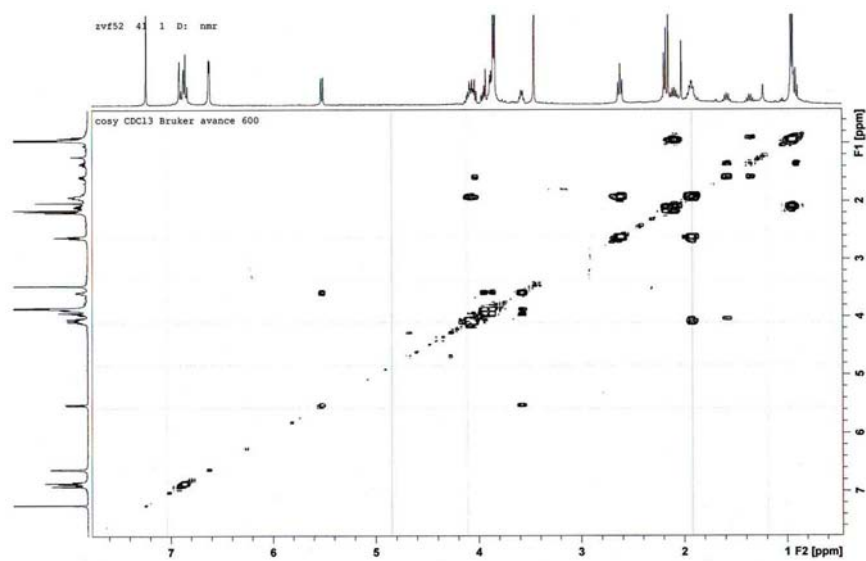


Figure S5. <sup>1</sup>H-<sup>1</sup>H COSY spectrum (600 MHz) of compound **1** in CDCl<sub>3</sub>.

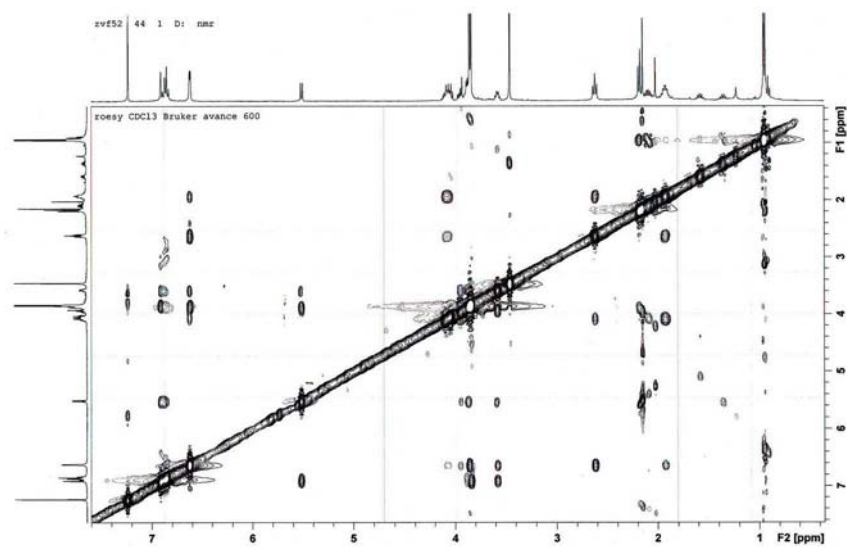


Figure S6. ROESY spectrum of compound **1** in  $\text{CDCl}_3$ .

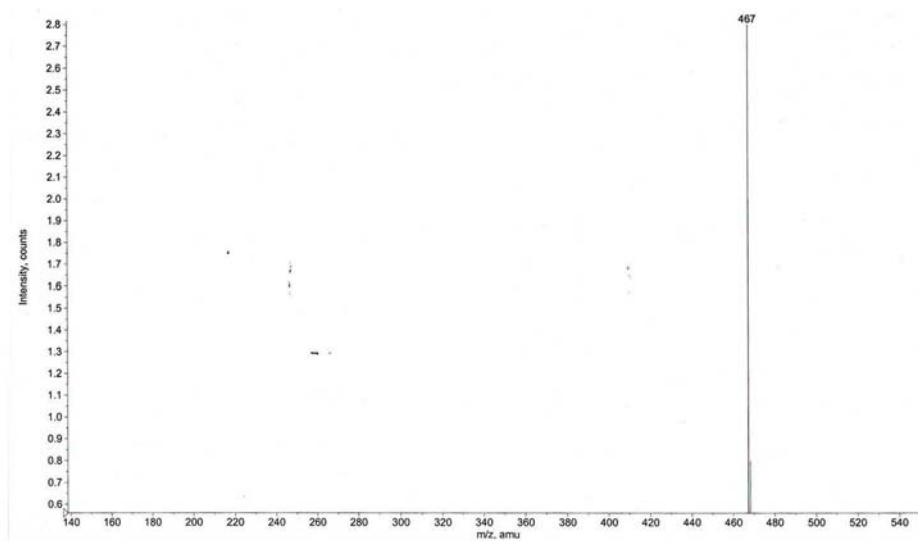
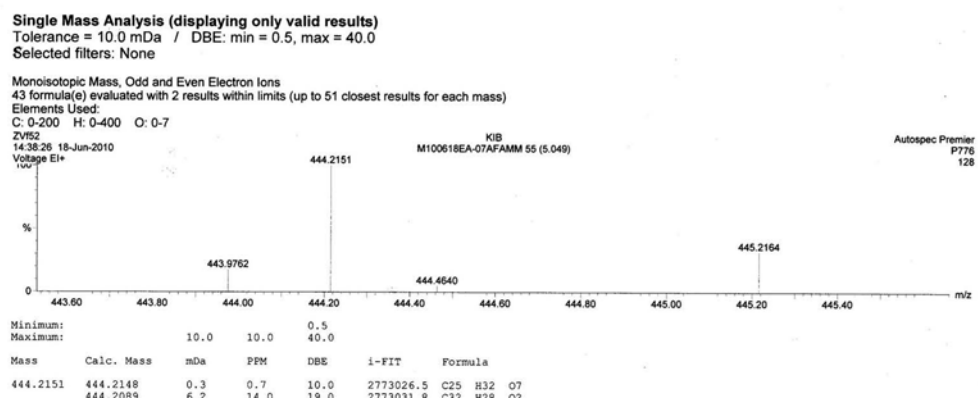


Figure S7. (+)-ESI-MS spectrum of compound **1**.



**Figure S8.** HREI-MS spectrum of compound **1**.