

Supplementary Information

Clusiaxanthone and Tocotrienol Series from *Clusia pernambucensis* and their Antileishmanial Activity

Everton M. Silva,^a Renata M. Araújo,^b Lindomar G. Freire-Filha,^a Edilberto R. Silveira,^c Norberto P. Lopes,^d José Elias de Paula,^e Raimundo Braz-Filho^f and Laila S. Espindola^{*a}

^aLaboratório de Farmacognosia, Universidade de Brasília, 70910-900 Brasília-DF Brazil

^bInstituto de Química, Universidade Federal do Rio Grande do Norte, 59072-970 Natal-RN, Brazil

^cDepartamento de Química Orgânica, Universidade Federal do Ceará, 60451-970 Fortaleza-CE, Brazil

^dFaculdade de Ciências Farmacêuticas de Ribeirão Preto, Universidade de São Paulo, 14040-903 Ribeirão Preto-SP, Brazil

^eLaboratório de Anatomia Vegetal, Universidade de Brasília, 70910-900 Brasília-DF, Brazil

^fLaboratório de Ciências Químicas, Universidade Estadual do Norte Fluminense, 28013-602 Campos dos Goytacazes-RJ and Departamento de Química, Universidade Rural do Rio de Janeiro, 23890-000 Seropédica-RJ, Brazil

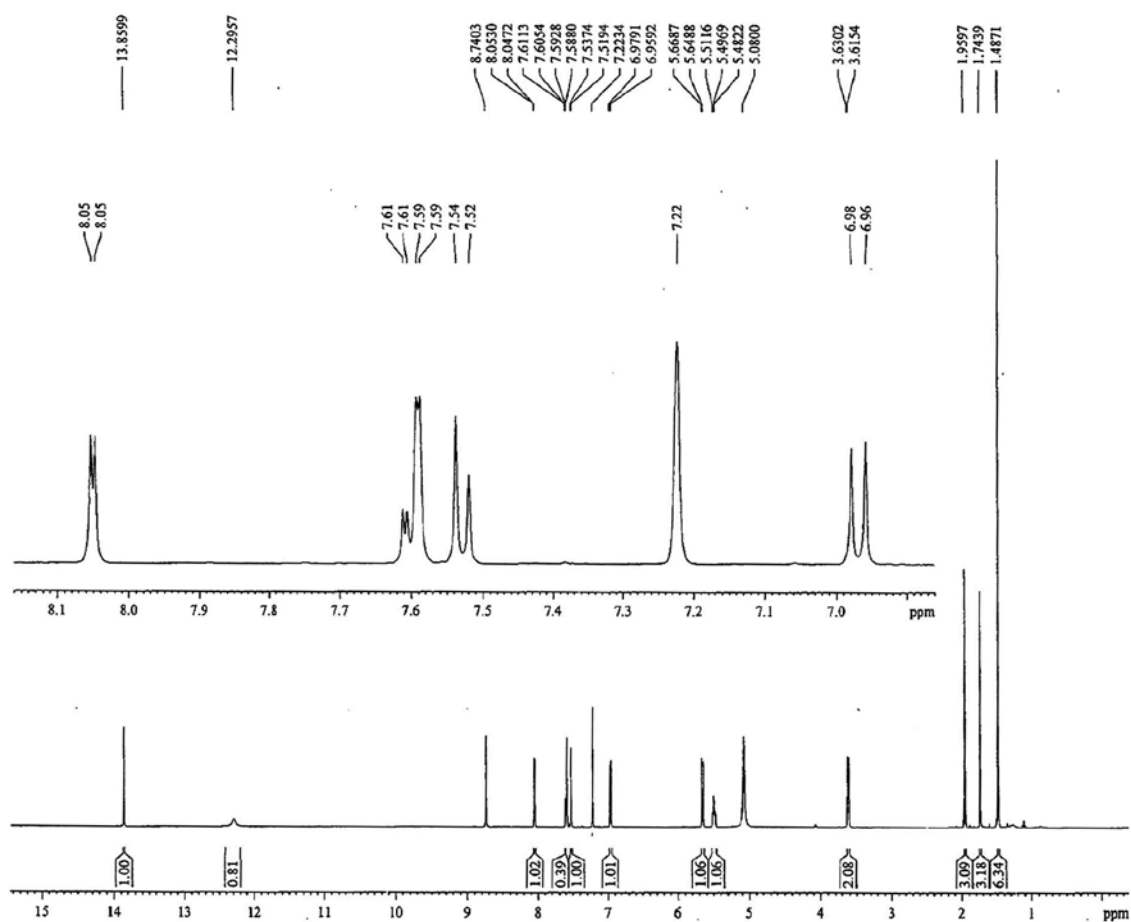


Figure S1. ¹H NMR spectrum (500 MHz, C₃D₅N) of clusiaxanthone (1).

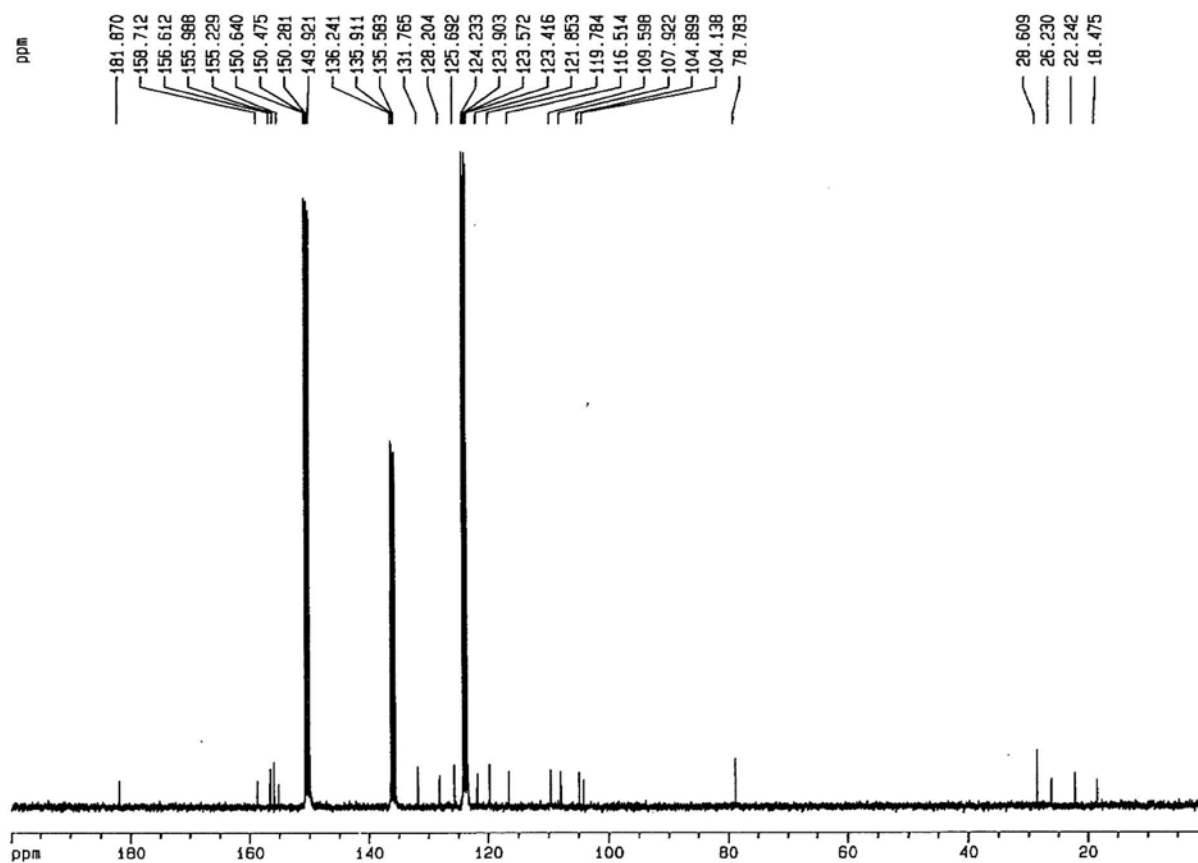


Figure S2. ¹³C NMR spectrum (125 MHz, C₅D₅N) of clusiaxanthone (1).

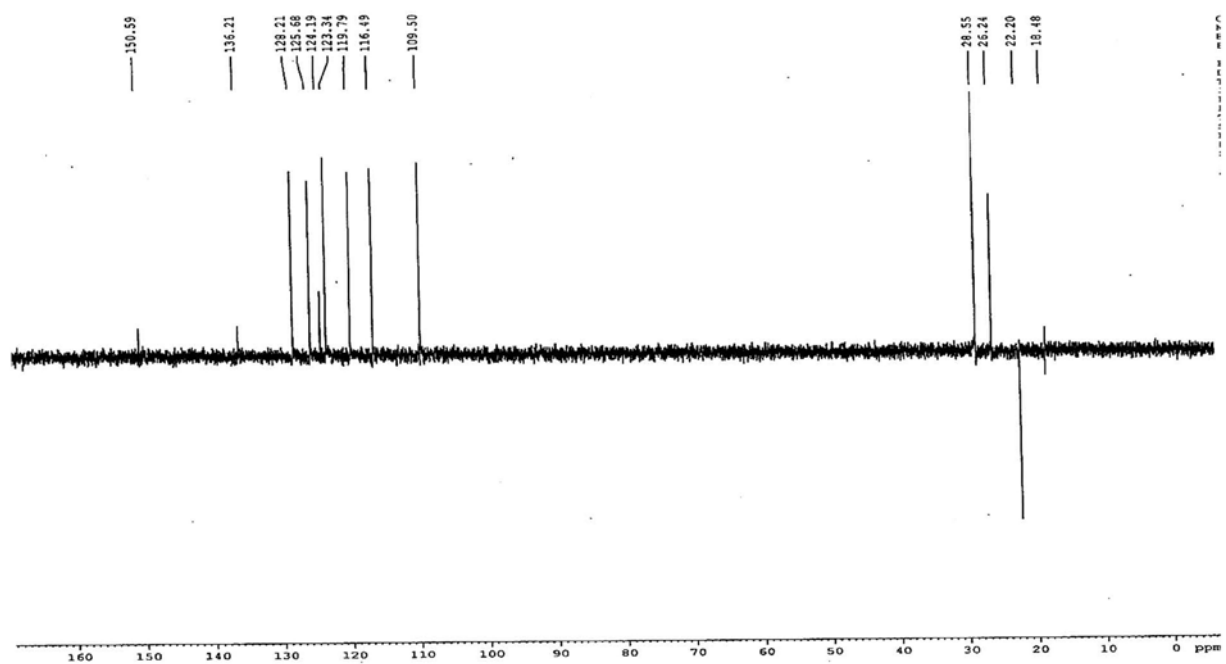


Figure S3. ¹³C DEPT 135 NMR spectrum (125 MHz, C₅D₅N) of clusiaxanthone (1).

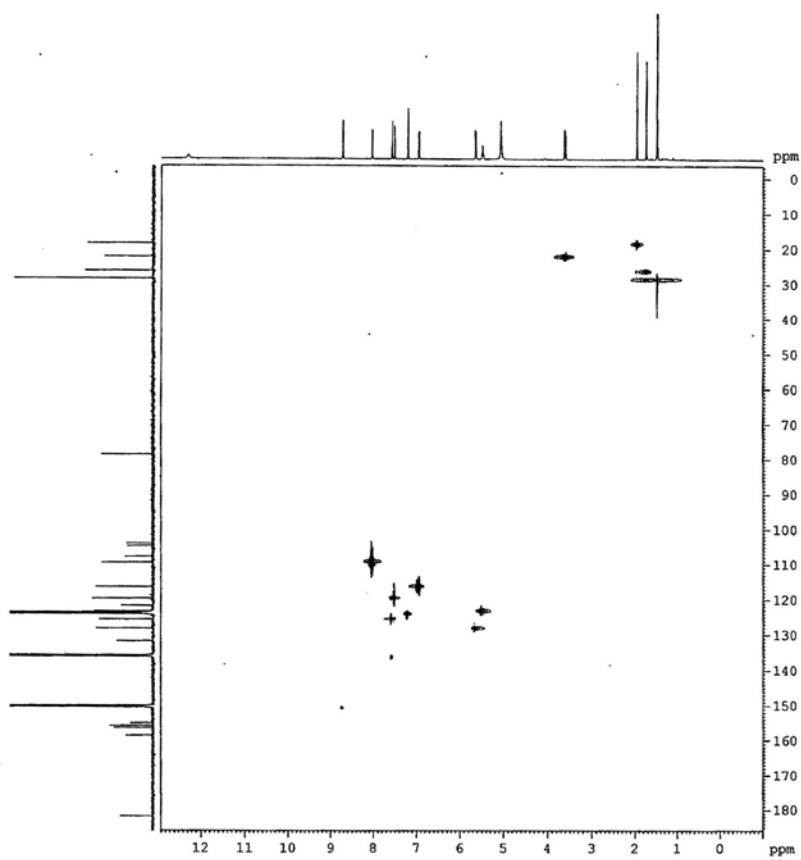


Figure S4. HSQC spectrum (C_5D_5N) of clusiaxanthone (**1**).

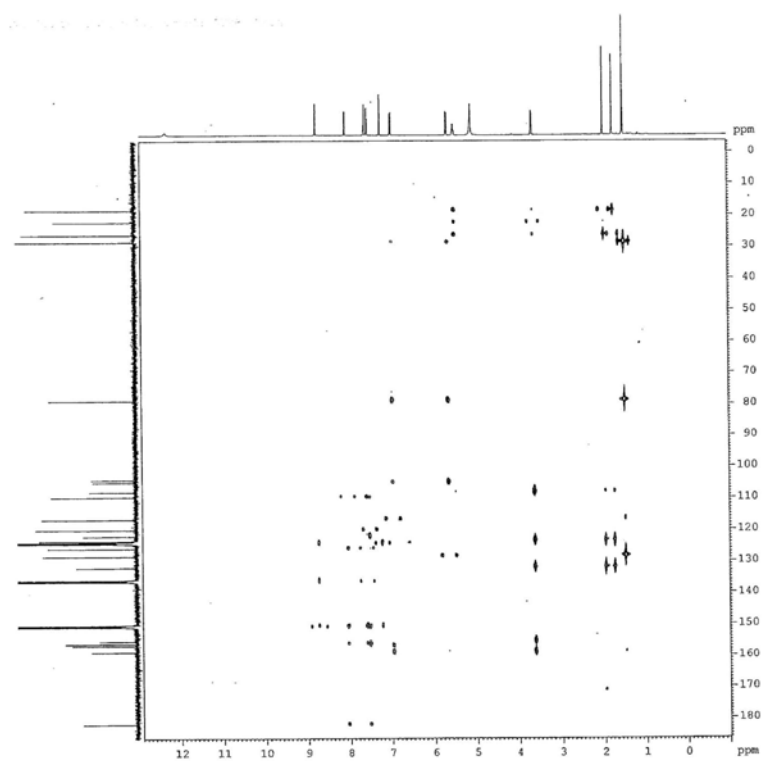


Figure S5. HMBC spectrum (C_5D_5N) of clusiaxanthone (**1**).

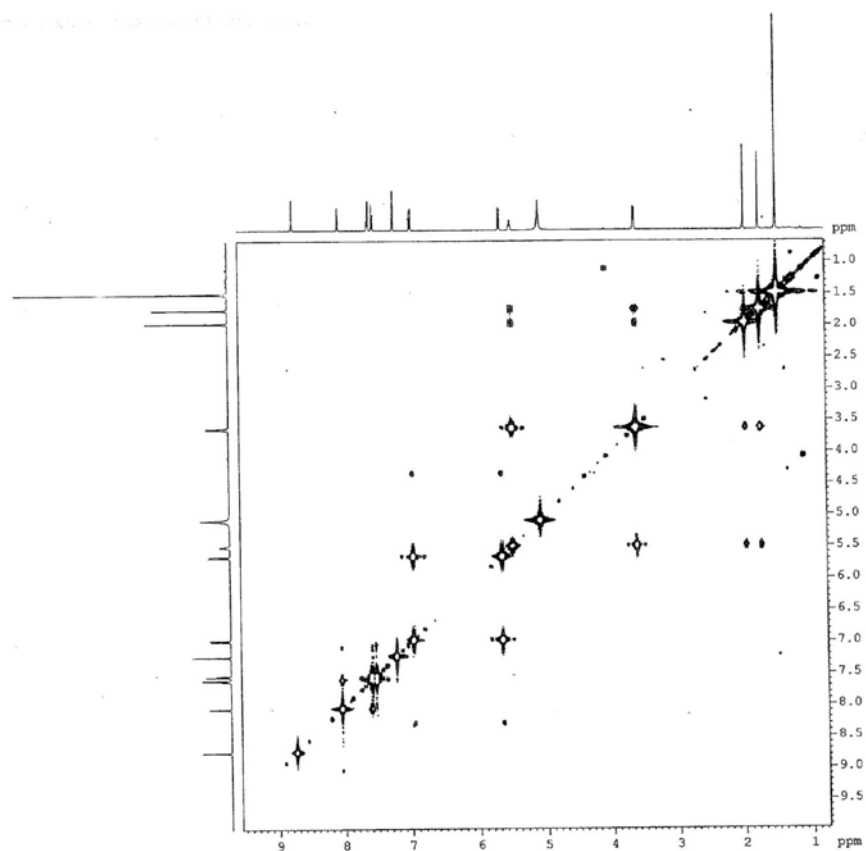


Figure S6. COSY spectrum (C_5D_5N) of clusiaxanthone (**1**).

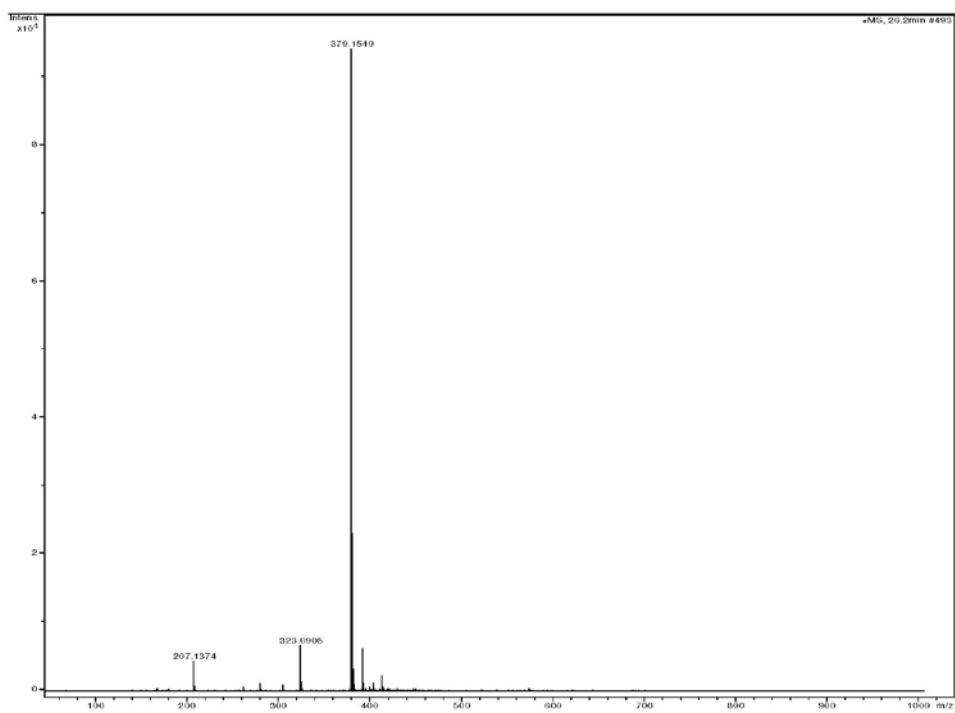


Figure S7. HRESIMS spectrum of clusiaxanthone (**1**) in the positive mode $[M + H]^+$.

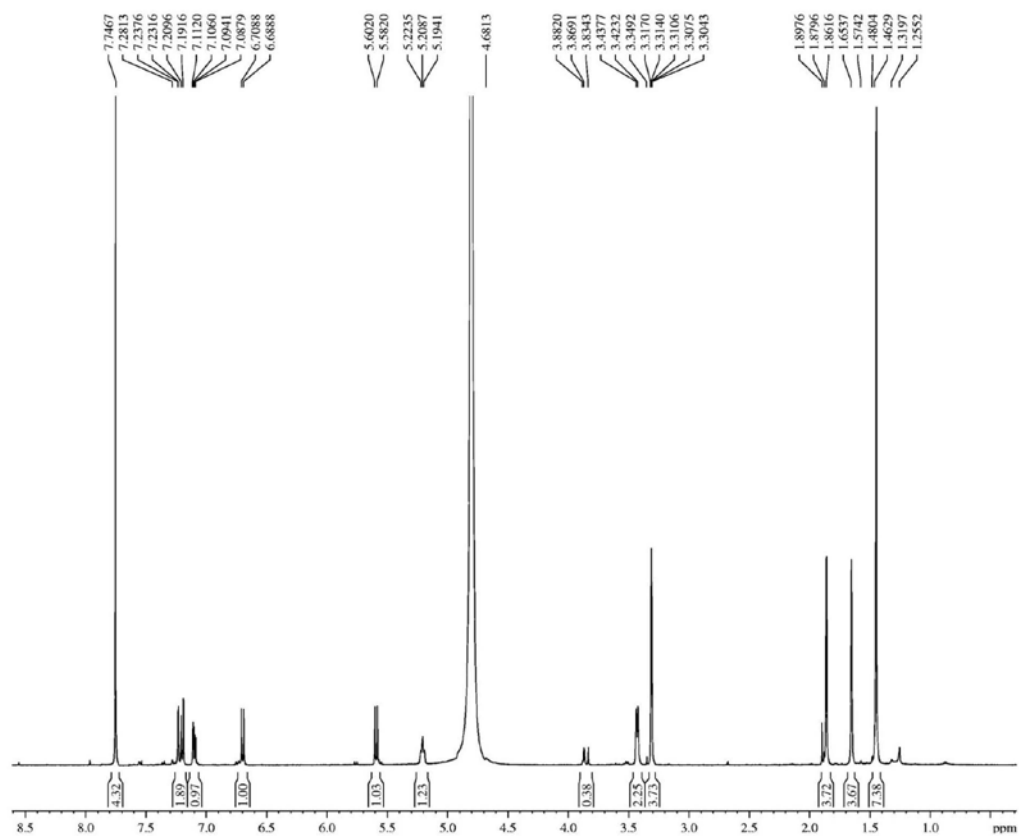


Figure S8. ¹H NMR spectrum (500 MHz, CDCl₃ + CD₃OD) of the derivative **1a**, obtained from clusiaxanthone (**1**).

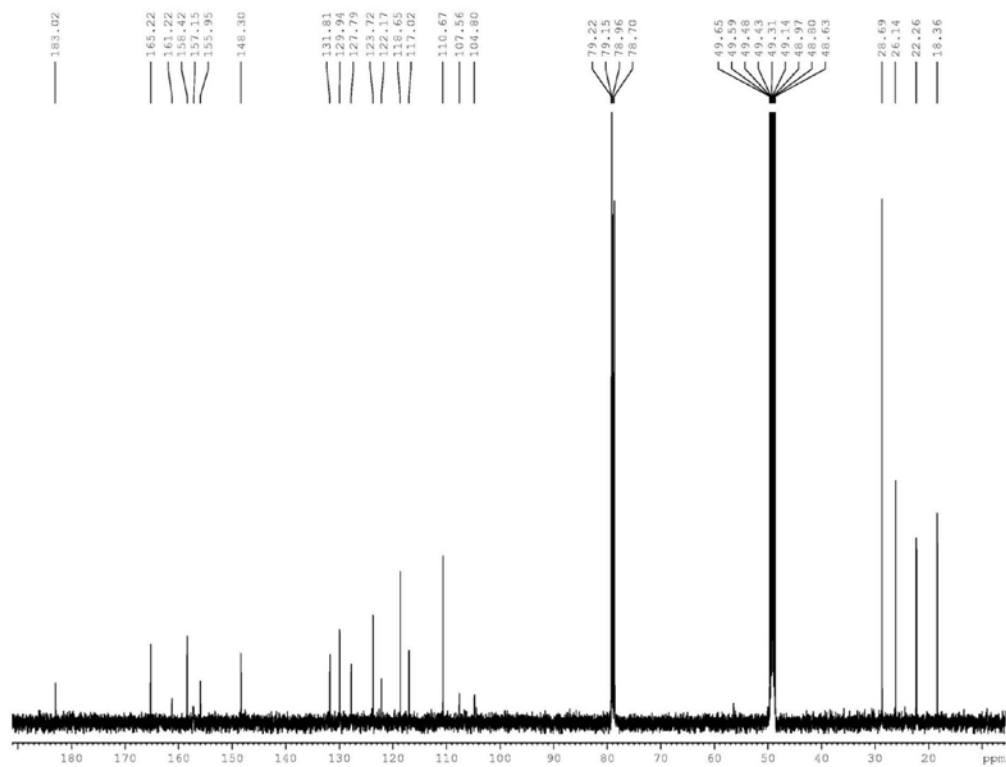


Figure S9. ¹³C NMR spectrum (125 MHz, CDCl₃ + CD₃OD) of the derivative **1a**, obtained from clusiaxanthone (**1**).

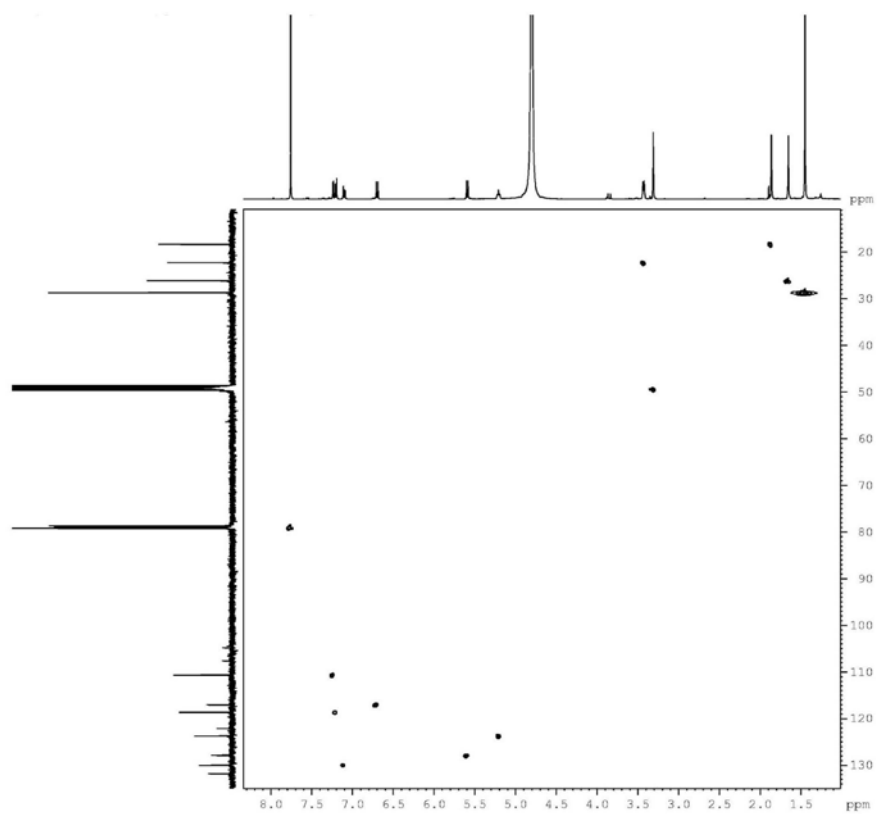


Figure S10. HSQC spectrum ($\text{CDCl}_3 + \text{CD}_3\text{OD}$) of the derivative **1a**, obtained from clusiaxanthone (**1**).

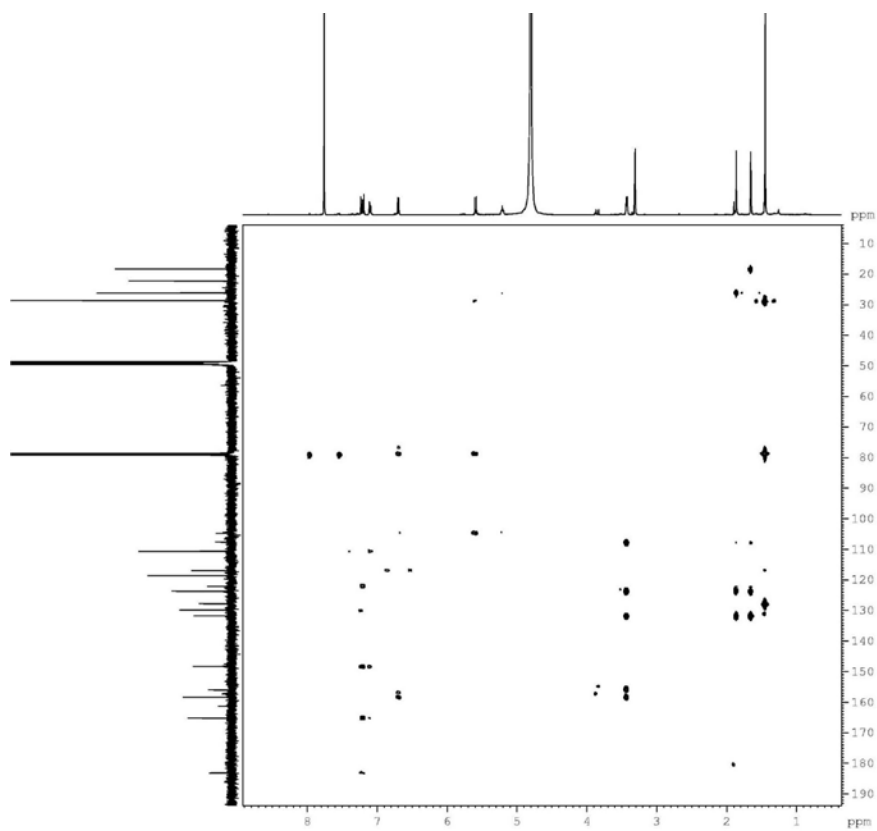


Figure S11. HMBC spectrum ($\text{CDCl}_3 + \text{CD}_3\text{OD}$) of the derivative **1a**, obtained from clusiaxanthone (**1**).

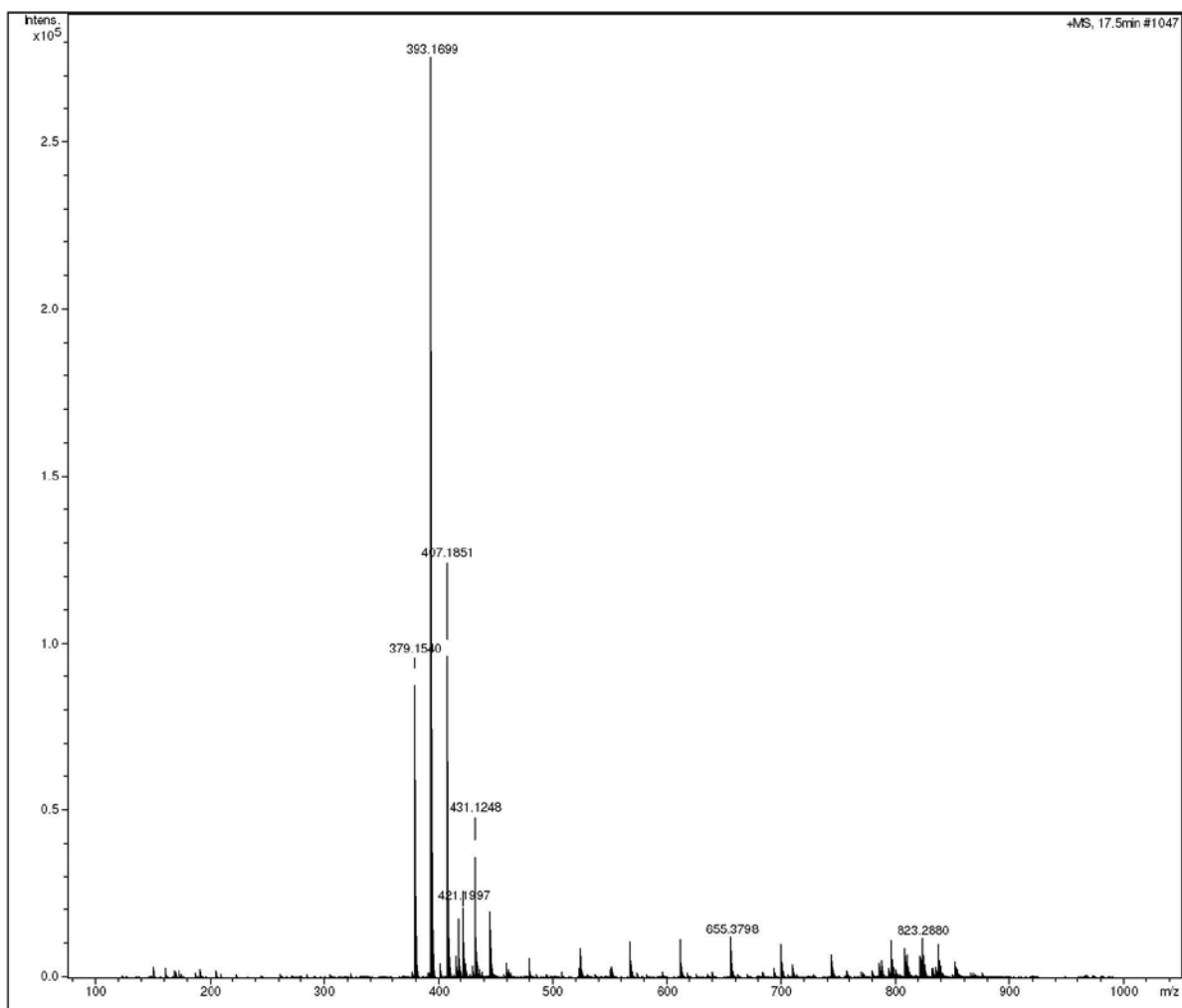


Figure S12. HRESIMS spectrum of the derivative **1a**, obtained from clusixanthone (**1**) in the positive mode $[M + H]^+$.