

Absolute Configuration and Enantiomeric Composition of Partially Resolved Mandelic, Atrolactic and Lactic Acids by ^1H NMR of their (*S*)-2-Methylbutyl Esters

Francisco A. da C. Andrade, Maricleide P. de L. Mendes and Neuracy C. da Fonseca*

*Departamento de Química Orgânica, Instituto de Química, Universidade Federal da Bahia,
Campus de Ondina, 40170-280 Salvador-BA, Brazil*

Identifications (Figures S1-S6)

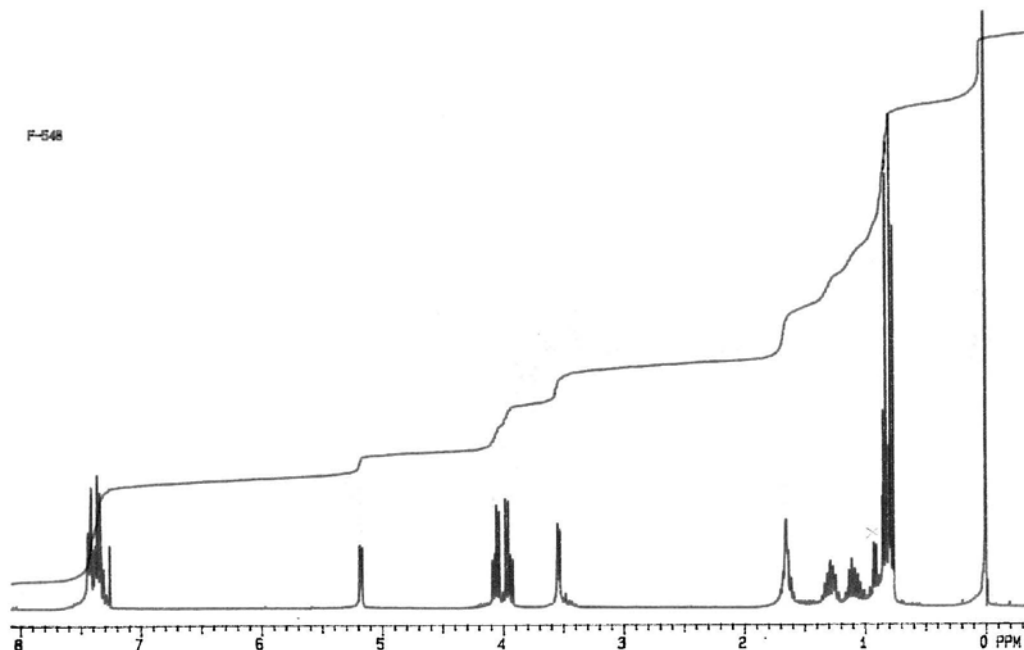


Figure S1. ^1H NMR (300 MHz, CDCl_3) spectrum of partially resolved (*S,R*)-2-methylbutyl mandelate.

*e-mail: fandrade@ufba.br

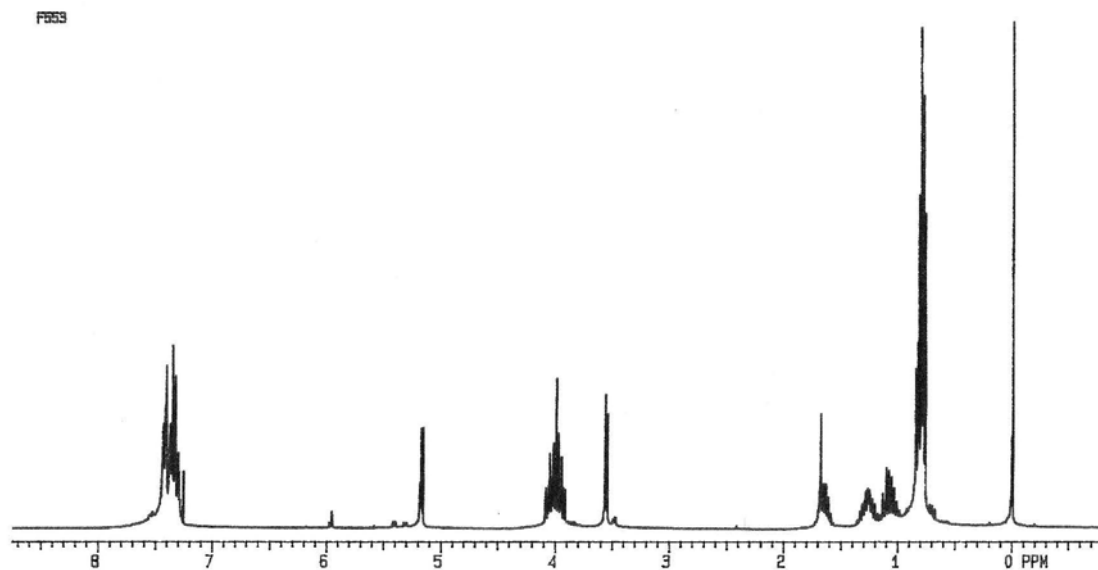


Figure S2. ¹H NMR (300 MHz, CDCl₃) spectrum of equimolar (*S,R+S,S*)-2-methylbutyl mandelate.

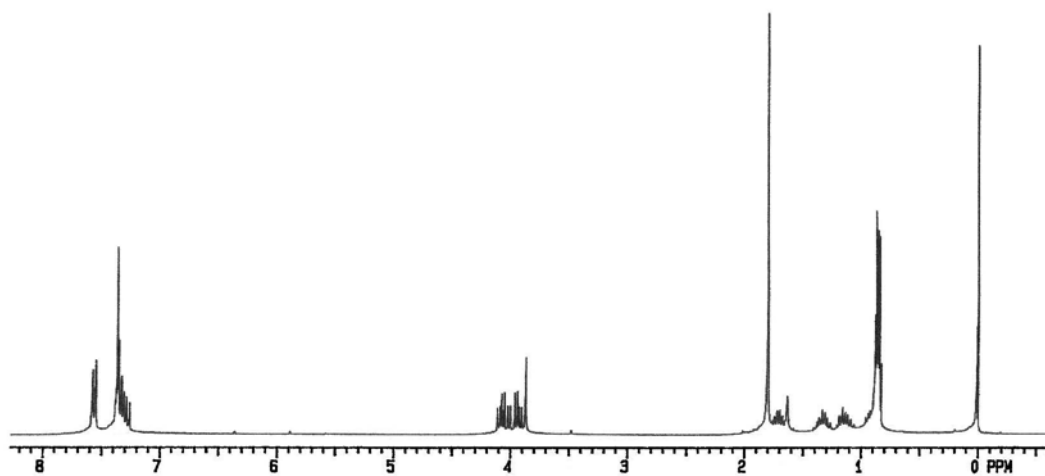


Figure S3. ¹H NMR (300 MHz, CDCl₃) spectrum of partially resolved (*S,S*)-2-methylbutyl atrolactate.

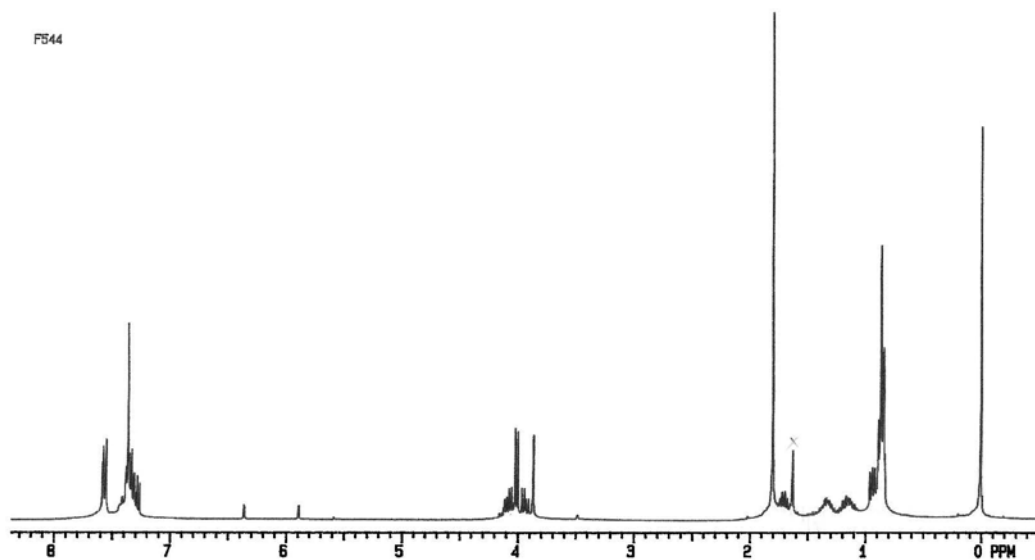


Figure S4. ¹H NMR (300 MHz, CDCl₃) spectrum of equimolar (*S,R+S,S*)-2-methylbutyl atrolactate.

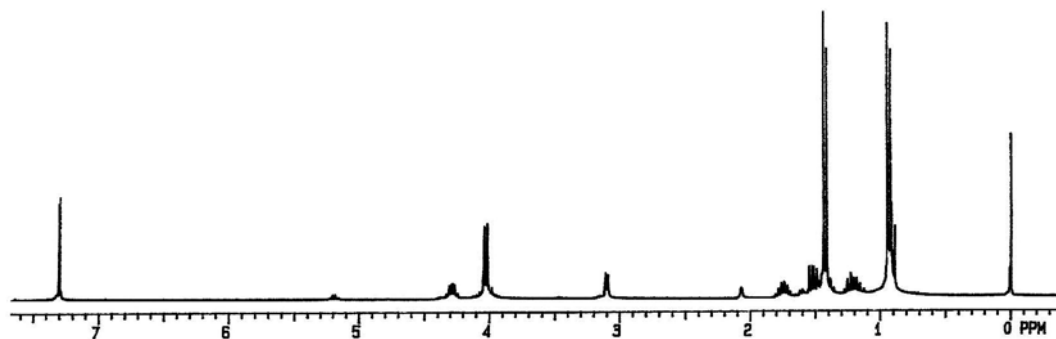


Figure S5. ¹H NMR (300 MHz, CDCl₃) spectrum of partially resolved (*S,S*)-2-methylbutyl lactate.

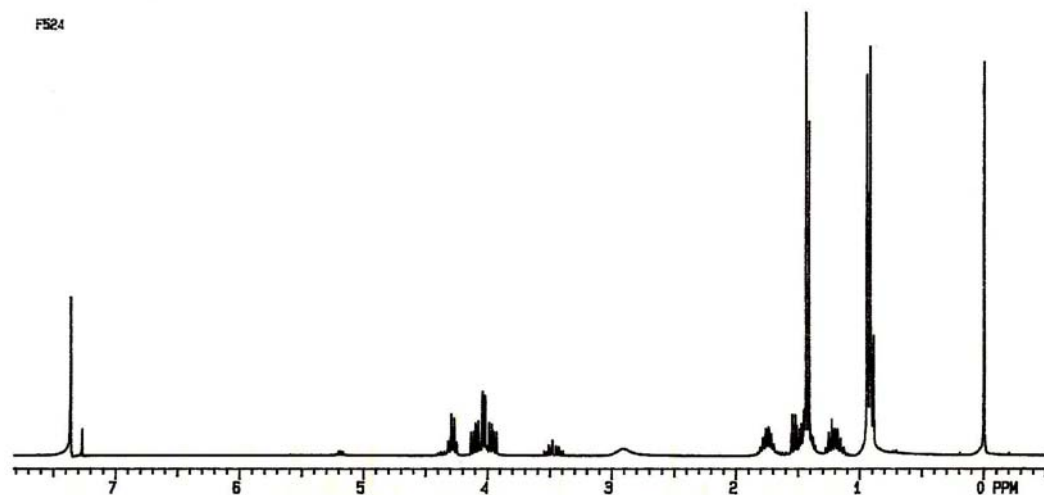
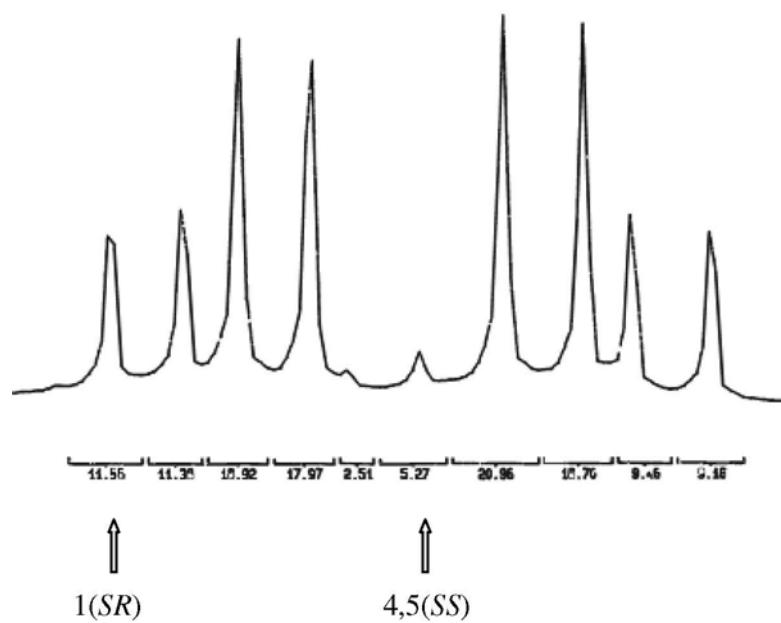
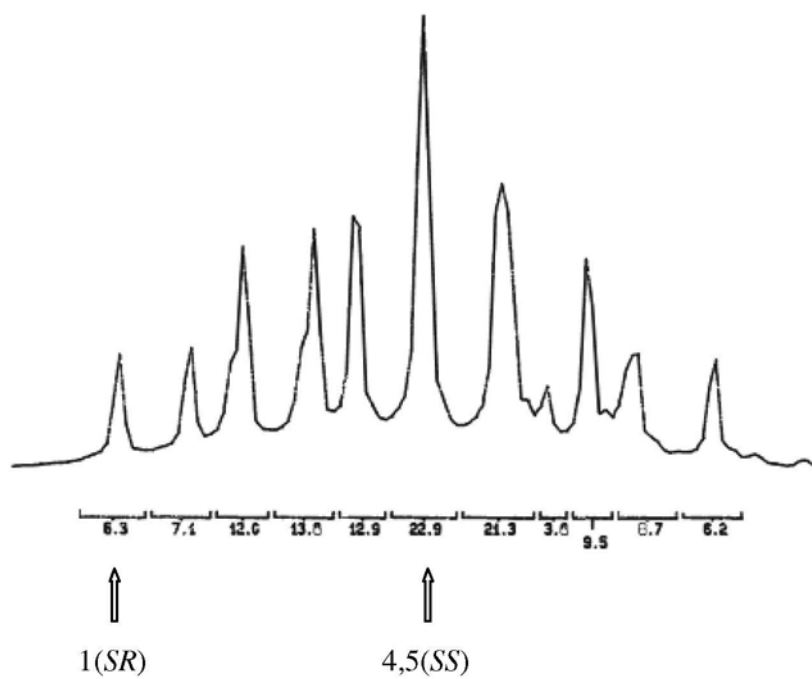


Figure S6. ¹H NMR (300 MHz, CDCl₃) spectrum of equimolar (*S,R+S,S*)-2-methylbutyl lactate.

Compositions (Figures S7-S12)

**Figure S7.** Methylene integration for partially resolved (*S,R*)-2-methylbutyl mandelate.**Figure S8.** Methylene integration for equimolar (*S,R+S,S*)-2-methylbutyl mandelate.

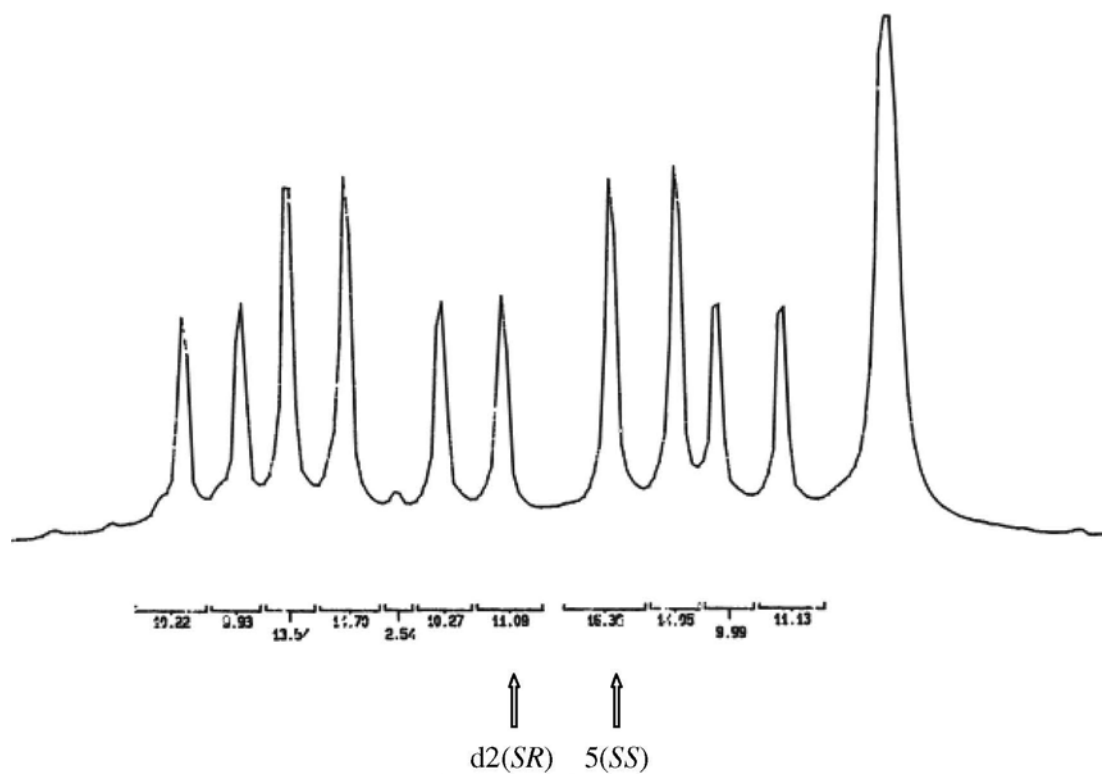


Figure S9. Methylene integration for partially resolved (*S,S*)-2-methylbutyl atrolactate.

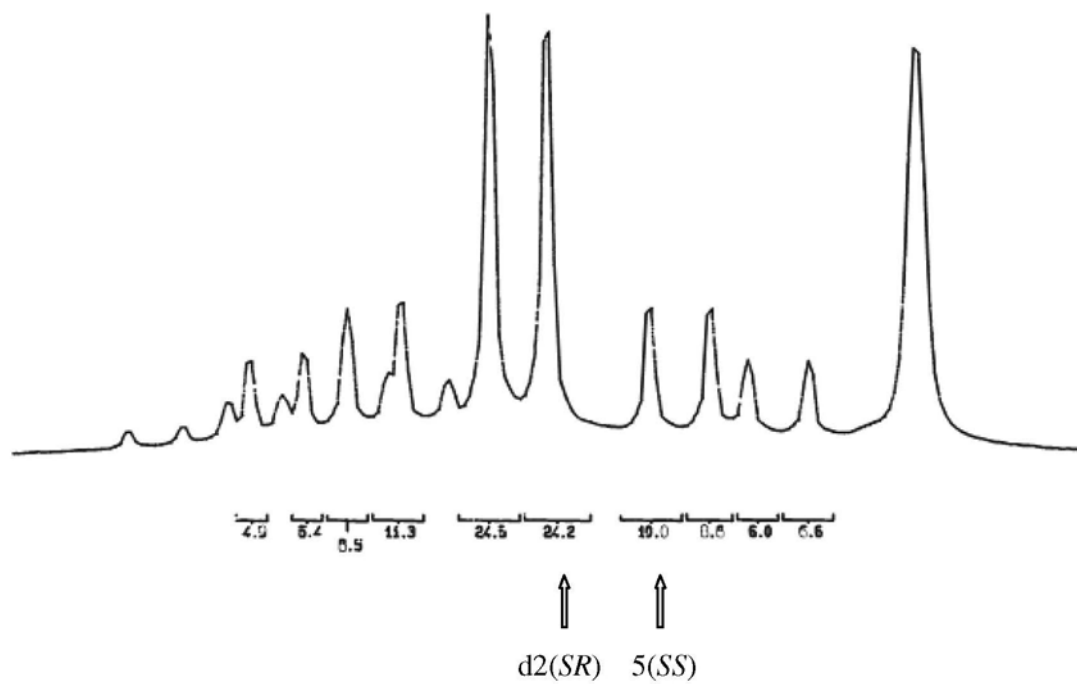


Figure S10. Methylene integration for equimolar (*S,R+S,S*)-2-methylbutyl atrolactate.

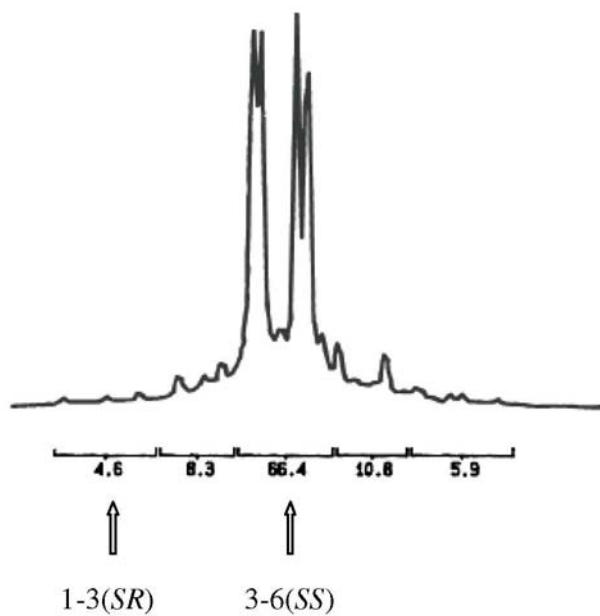


Figure S11. Methylene integration for partially resolved (*S,S*)-2-methylbutyl lactate.

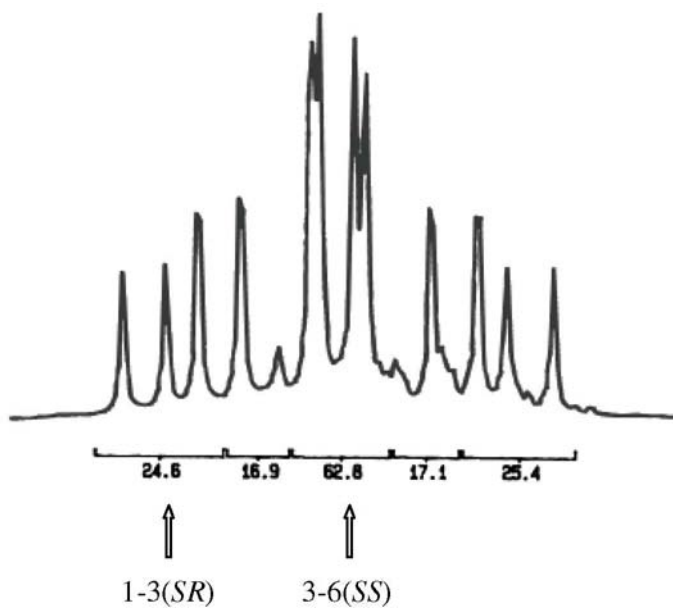


Figure S12. Methylene integration for equimolar (*S,R+S,S*)-2-methylbutyl lactate.