

# Supplementary Information

## Alternative and Simple Normal-Phase HPLC Enantioseparation of a Chiral Amino Acid-Type Spin Label Derivative

Joao P. F. Vieira,<sup>a</sup> Erick F. Poletti,<sup>b</sup> Renata F. F. Vieira,<sup>b</sup> Vinicius Veredas,<sup>a</sup>  
Cesar C. Santana<sup>c</sup> and Clovis R. Nakaie<sup>\*b</sup>

<sup>a</sup>Faculdade de Engenharia Química, Universidade Estadual de Campinas (UNICAMP),  
Av. Albert Einstein, 500, 13083-852 Campinas-SP, Brazil

<sup>b</sup>Departamento de Biofísica, Escola Paulista de Medicina (EPM),  
Universidade Federal de São Paulo (UNIFESP), Rua 3 de Maio, 100, 04044-020 São Paulo-SP, Brazil

<sup>c</sup>Núcleo de Estudos em Sistemas Coloidais do Instituto de Tecnologia e Pesquisa (NUESC/ITP),  
Universidade Tiradentes (UNIT), Av. Murilo Dantas, 300, 49032-490 Aracaju-SE, Brazil

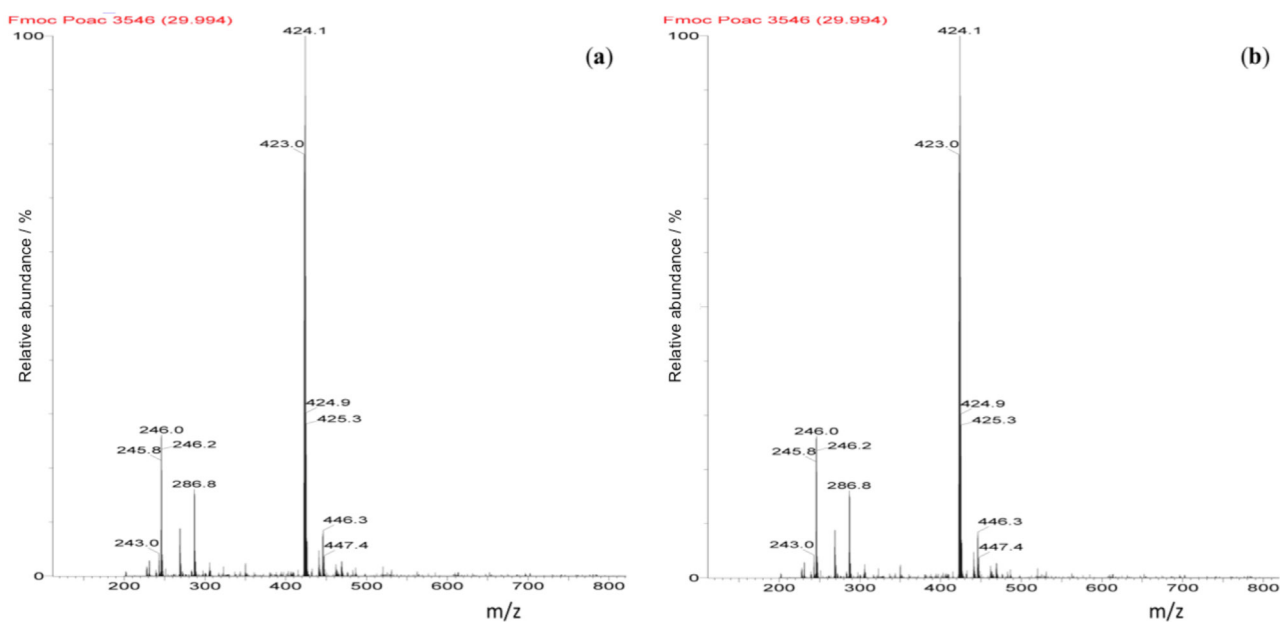
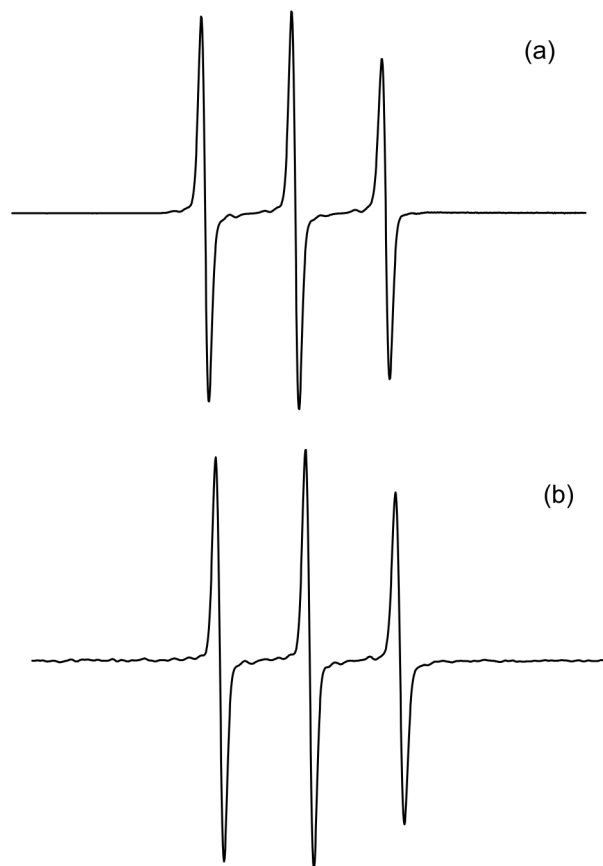


Figure S1. ESI/MS spectra of (a) (+)-(3R,4R) and (b) (-)-(3S,4S) Fmoc-POAC enantiomers. Characterization: see details in the Experimental Section.

\*e-mail: cnakaie@unifesp.br



**Figure S2.** EPR spectra of (a) (+)-(3*R*,4*R*) and (b) (-)-(3*S*,4*S*) Fmoc-POAC enantiomers. Characterization: see details in the Experimental Section.