

Supplementary Information

Multivariate Treatment of LIBS Data of Prehistoric Paintings

Flávia de S. L. Borba,^a Juliana Cortez,^b Viviane K. Asfora,^c Celio Pasquini,^b
Maria Fernanda Pimentel,^{*,d} Anne-Marie Pessis^e and Helen J. Houry^c

^aDepartamento de Química Fundamental, Universidade Federal de Pernambuco,
50740-540 Recife-PE, Brazil

^bInstituto de Química, Universidade Estadual de Campinas, 13084-971 Campinas-SP, Brazil

^cDepartamento de Engenharia Nuclear, Universidade Federal de Pernambuco,
50740-540 Recife-PE, Brazil

^dDepartamento de Engenharia Química, Universidade Federal de Pernambuco,
50740-521 Recife-PE, Brazil

^ePrograma de Pós-Graduação em Arqueologia, Universidade Federal de Pernambuco,
50670-901 Recife-PE, Brazil

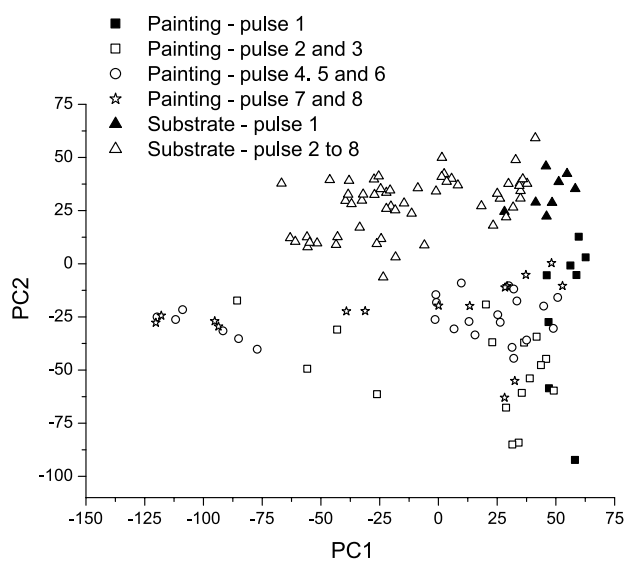


Figure S1. Score plot of PCA carried on the LIBS spectra set of Toca da Extrema II Archaeological Site painting obtained with eight consecutive laser pulses fired in the prehistoric painting.

*e-mail: mfernanda.pimentel@gmail.com, mfp@ufpe.br

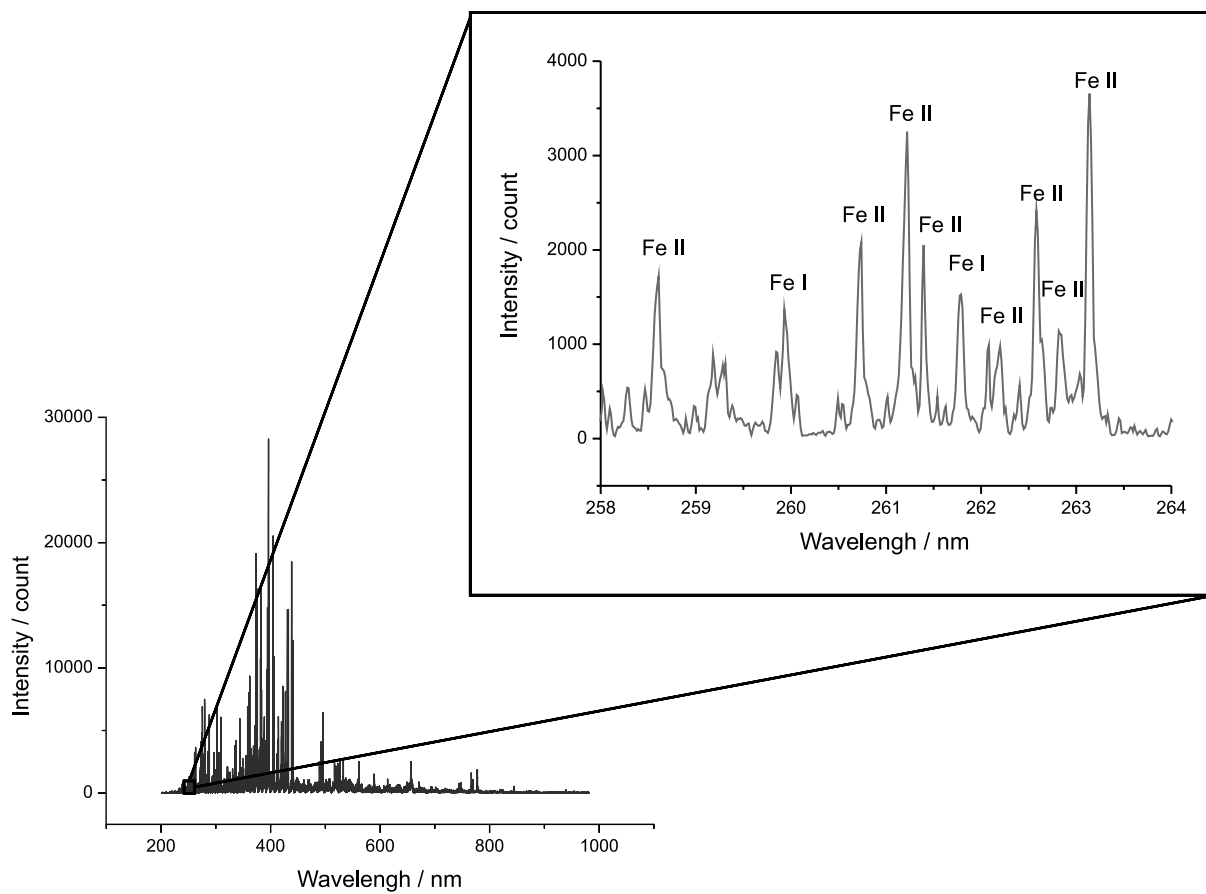


Figure S2. Spectrum of the second pulse fired on the painting from Toca da Extrema II Archaeological Site. The highlighted range of 258-264 nm is characteristic of the element iron.