

Supplementary Information

A Multi-Syringe Flow System for Monitoring Moderately Fast Chemical Reactions

Víctor Cerdà,^a Carlos Ubide*^b and Juan Zuriarrain^b

^aDepartament de Química, Facultat de Ciències, Universitat de les Illes Balears,
Carretera de Valdemossa, km 7.5, Mallorca, Spain

^bDepartament de Química Aplicada, Facultat de Química, Universidad del País Vasco,
UPV/EHU, 20018-San Sebastián, Spain

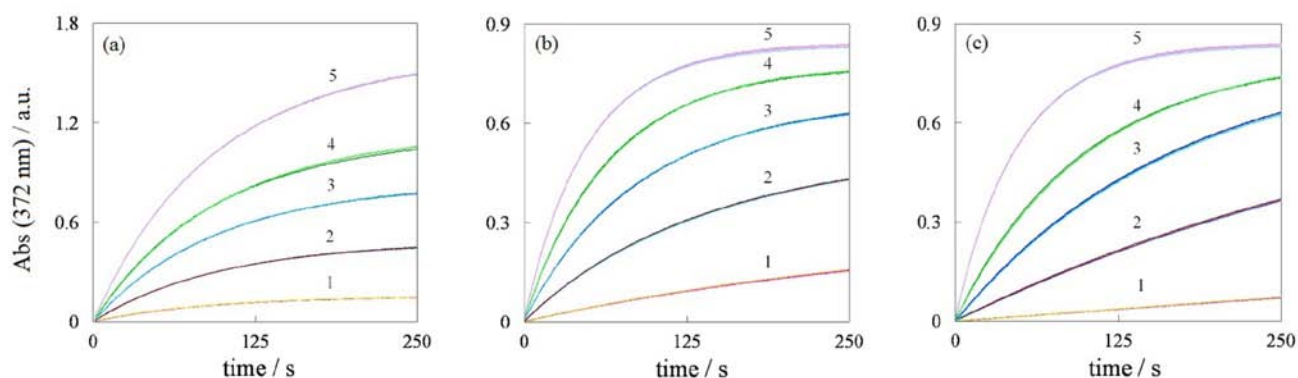


Figure S1. Kinetic profiles corresponding to the runs in Table 3: (a) effect of bromate, (b) effect of bromide and (c) effect of acidity.

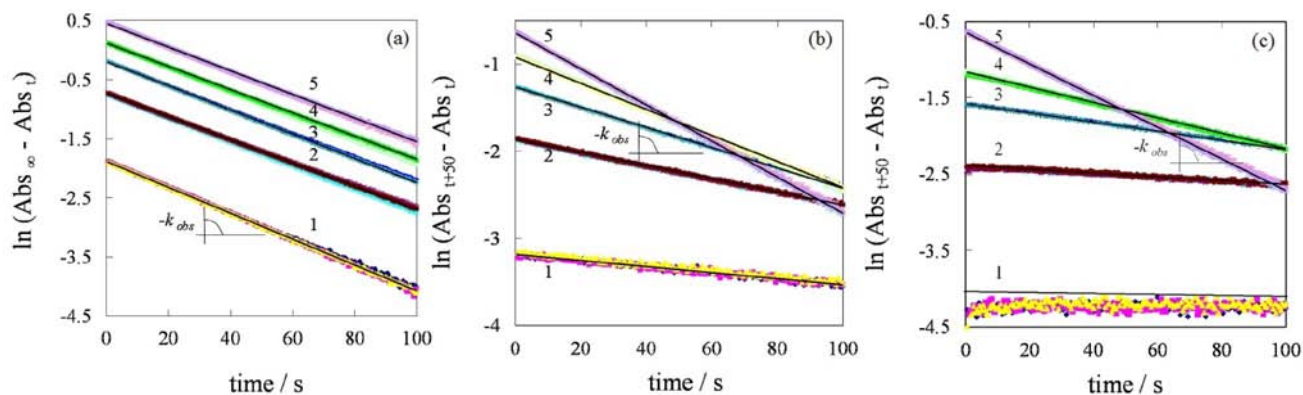


Figure S2. First order plots of profiles in Figure S1: (a) effect of bromate; (b) effect of bromide; (c) effect of acidity.

*e-mail: carlos.ubide@ehu.es

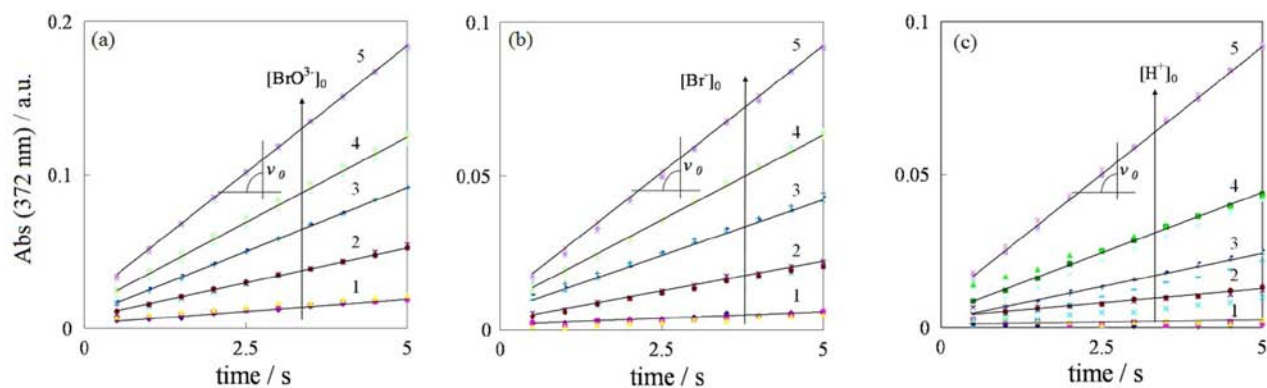


Figure S3. First 5 s of kinetic profiles in Figure S1 showing experimental points used to calculate the initial rate: (a) effect of bromate, (b) effect of bromide and (c) effect of acidity.

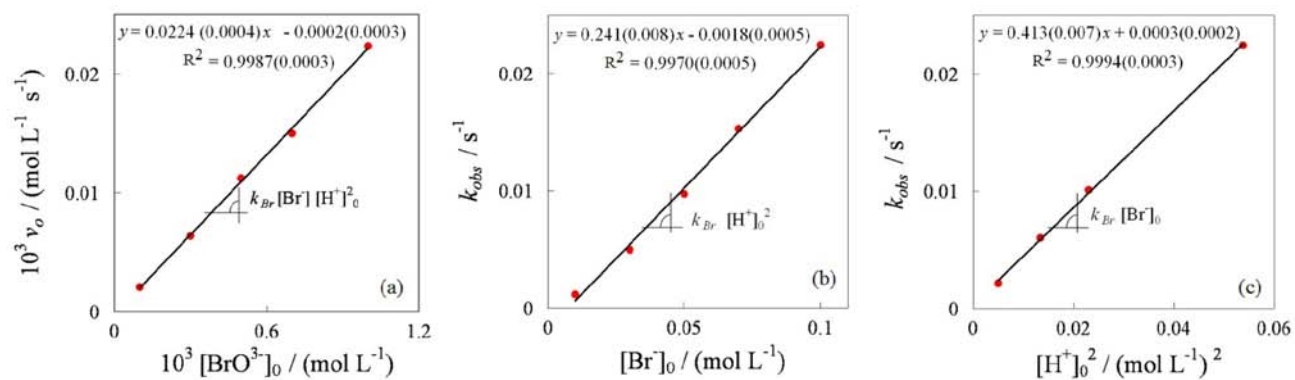


Figure S4. (a) Effect of bromate on the initial rate (data from Figure S3 a), (b) effect of bromide on k_{obs} (data from Figure S3 b) and (c) effect of acidity on k_{obs} (data from Figure S3 c).