

Supplementary Information

Solid State ^{13}C NMR Analysis of Brazilian Cretaceous Ambers

Ricardo Pereira,^{*,a} Rosane A. S. San Gil,^b Ismar S. Carvalho,^c
Antonio Carlos S. Fernandes^d and Débora A. Azevedo^{*,a}

^aLaboratório de Geoquímica Orgânica Molecular e Ambiental, Instituto de Química,
Universidade Federal do Rio de Janeiro 21941-909 Rio de Janeiro-RJ, Brazil

^bLaboratório de RMN de Sólidos, Instituto de Química, Universidade Federal do Rio de Janeiro,
21941-909 Rio de Janeiro-RJ, Brazil

^cDepartamento de Geologia, Instituto de Geociências, Universidade Federal do Rio de Janeiro,
21910-200 Rio de Janeiro-RJ, Brazil

^dDepartamento de Geologia e Paleontologia, Museu Nacional, Universidade Federal do
Rio de Janeiro, 20940-040 Rio de Janeiro-RJ, Brazil

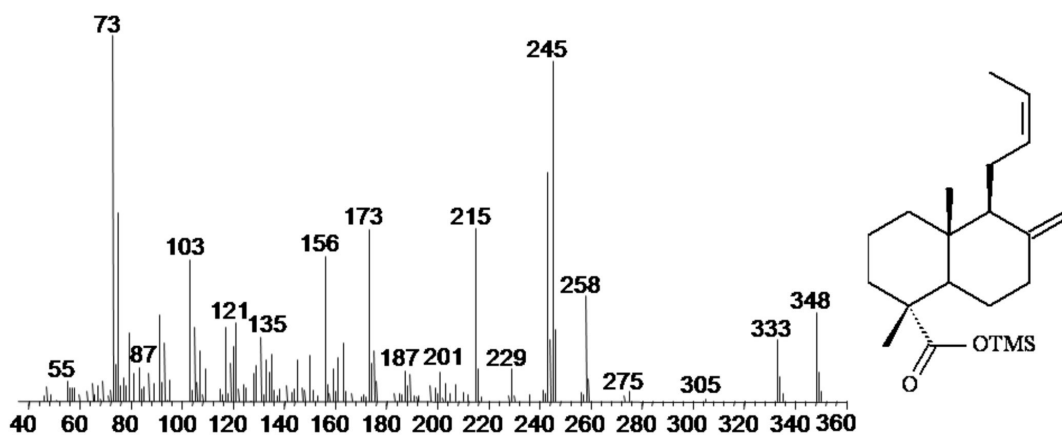


Figure S1. Mass spectrum of Z-14,15-bisnorlabda-8(20),dien-18-oic acid as TMS derivative.

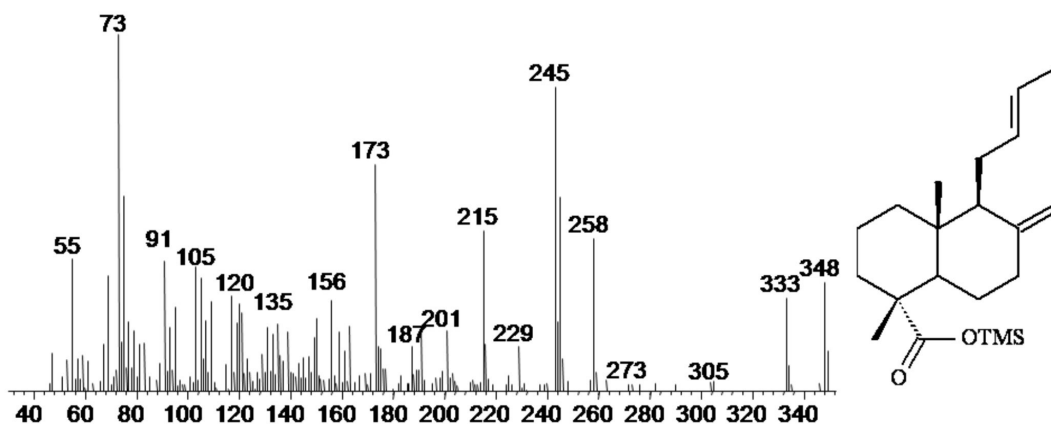


Figure S2. Mass spectrum of E-14,15-bisnorlabda-8(20),dien-18-oic acid as TMS derivative.

*e-mail: ricardopereira@iq.ufrj.br, debora@iq.ufrj.br

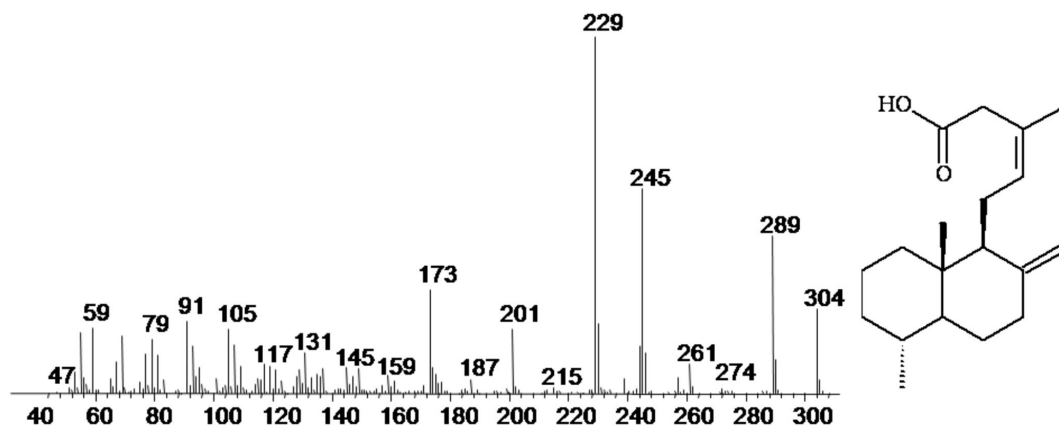
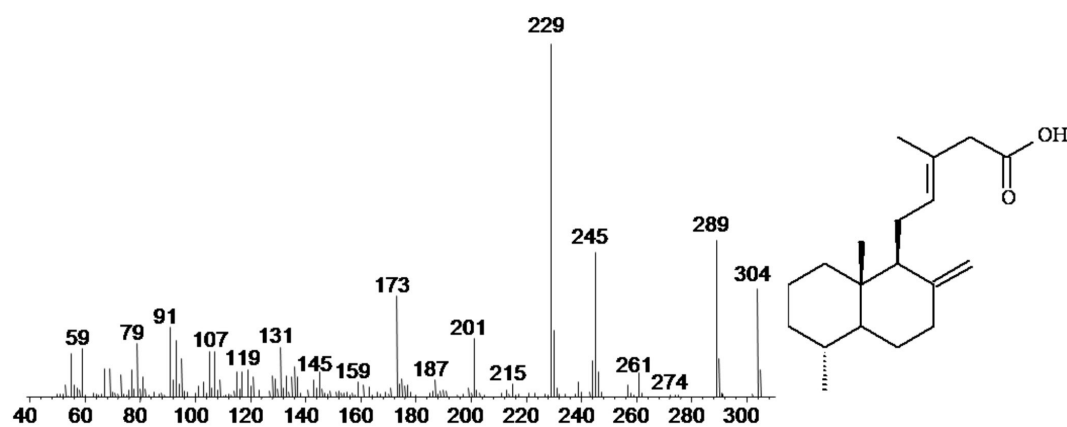
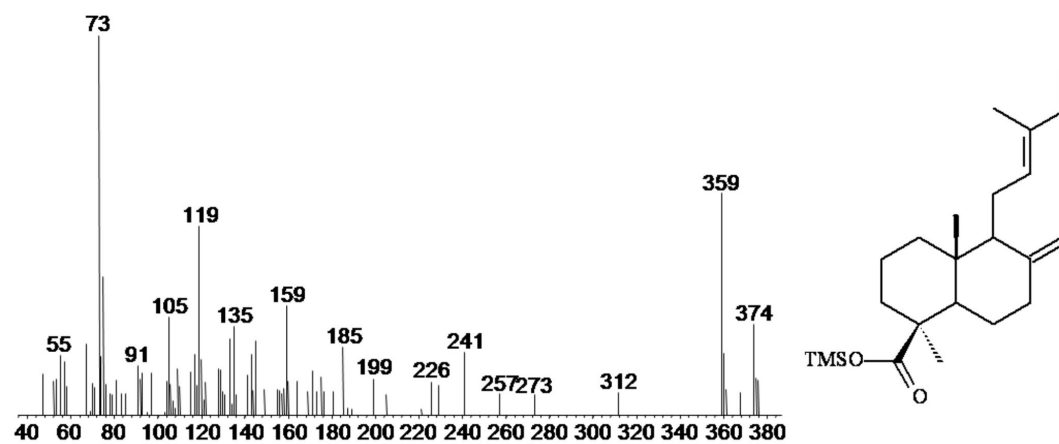
Figure S3. Mass spectrum of *Z*-nor-agathic acid.Figure S4. Mass spectrum of *E*-nor-agathic acid.

Figure S5. Mass spectrum of communic acid as TMS derivative.