

Supplementary Information

Arsenic and Mercury Mobility in Brazilian Sediments from São Francisco River Basin

Patrícia S. Rezende, Priscila A. S. Moura, Walter A. Durão Jr., Clésia C. Nascentes,
Cláudia C. Windmöller and Letícia M. Costa*

Departamento de Química, ICEX, Universidade Federal de Minas Gerais,
Avenida Presidente Antônio Carlos, 6627, Pampulha, 31270-901 Belo Horizonte-MG, Brazil

Dendrogram with Ward's method and Euclidian distances

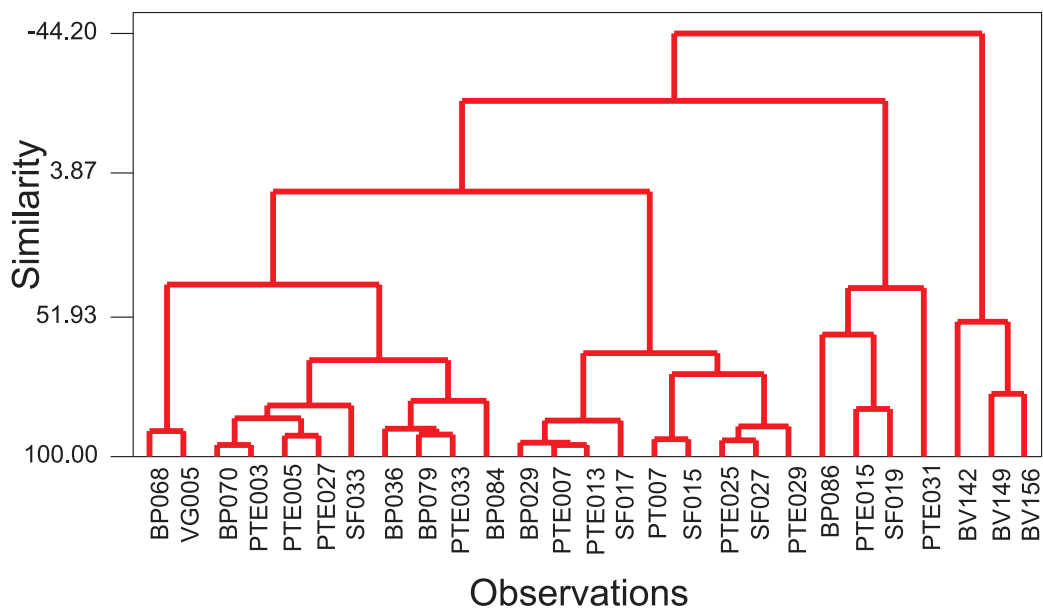


Figure S1. Dendrogram of sediment samples after aqua regia and partial extraction procedures.

*e-mail: leticia@qui.ufmg.br