

Activities of Extracts and Compounds from *Spiranthera odoratissima* St. Hil. (Rutaceae) in Leaf-cutting Ants and their Symbiotic Fungus

Ana Paula Terezan,^a Raquel Andrade Rossi,^b Roberta N. A. Almeida,^b
Taís Garcia Freitas,^b João B. Fernandes,^{*a} M. Fátima das Graças Fernandes da Silva,^a
Paulo C. Vieira,^a Odair C. Bueno,^b Fernando C. Pagnocca^b and José R. Pirani^c

^a Departamento de Química, Universidade Federal de São Carlos, CP 676,
13565-905 São Carlos-SP, Brazil

^b Centro de Estudos de Insetos Sociais, Universidade Estadual Paulista, Campus Rio Claro,
CP 199, 13506-900 Rio Claro-SP, Brazil

^c Departamento de Botânica, Instituto de Biociências, Universidade de São Paulo,
05508-900 São Paulo-SP, Brazil

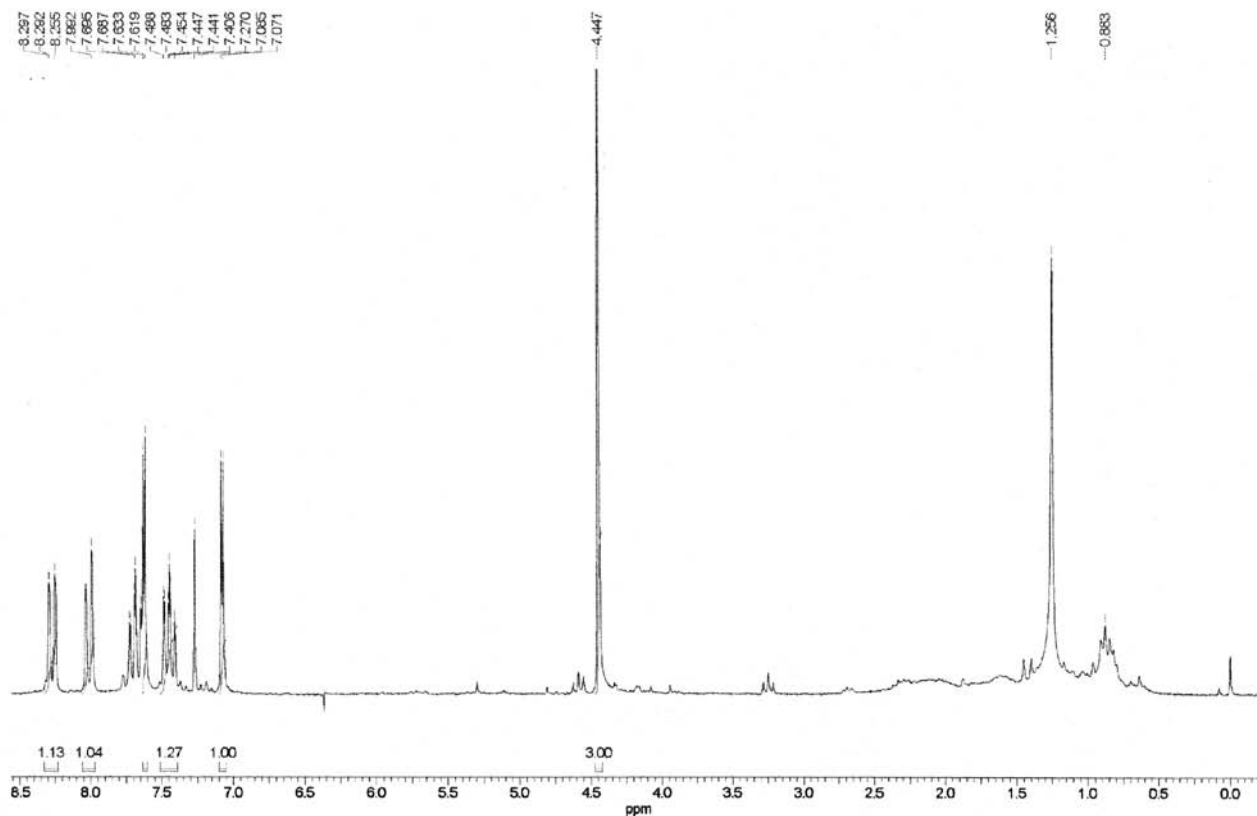


Figure S1. ¹H NMR spectrum of dictamine (CDCl₃, 200 MHz).

*e-mail: djbf@power.ufscar.br

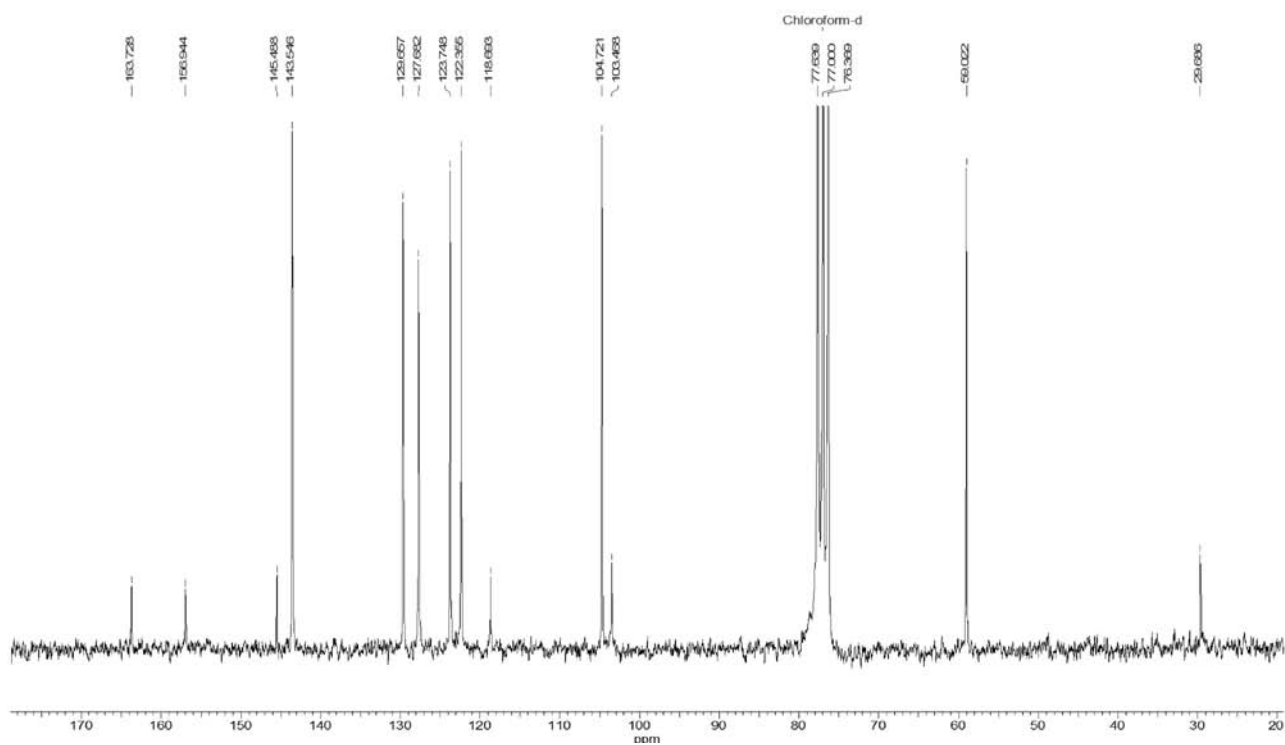


Figure S2. ^{13}C NMR spectrum of dictamine (CDCl_3 , 200 MHz).

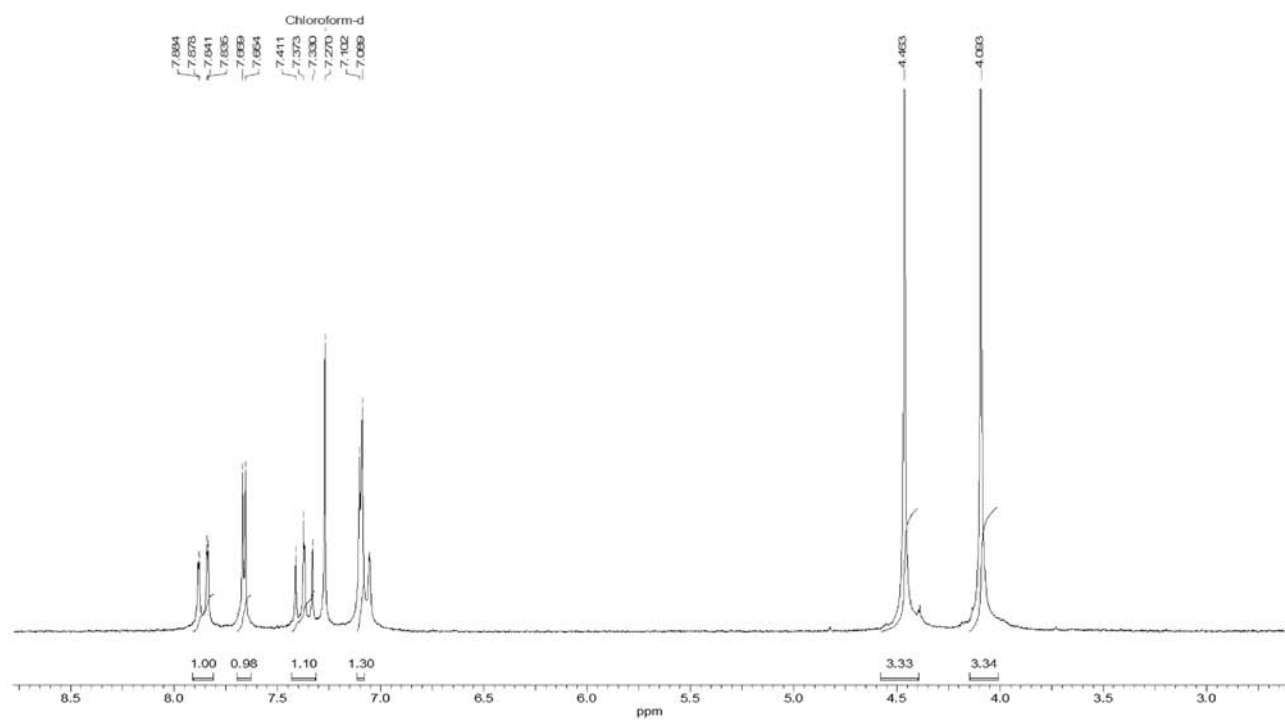


Figure S3. ^1H NMR spectrum of γ -fagarine (CDCl_3 , 200 MHz).

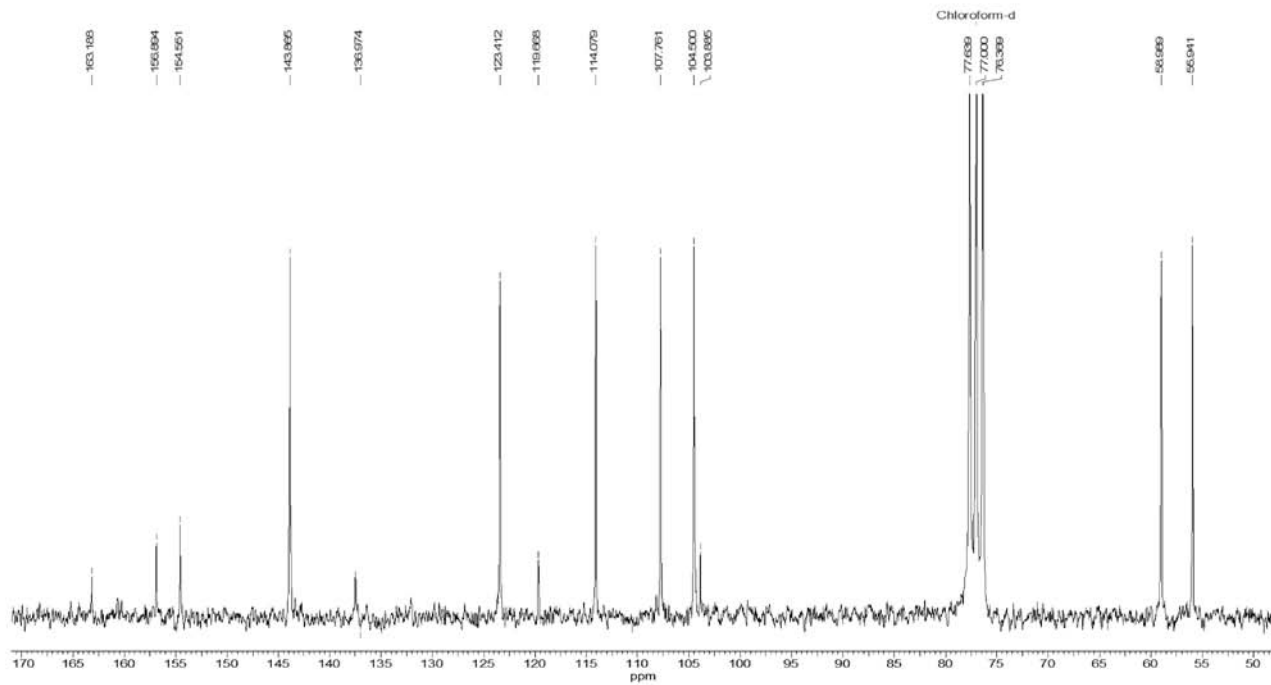


Figure S4. ^{13}C NMR spectrum of γ -fagarine (CDCl_3 , 200 MHz).

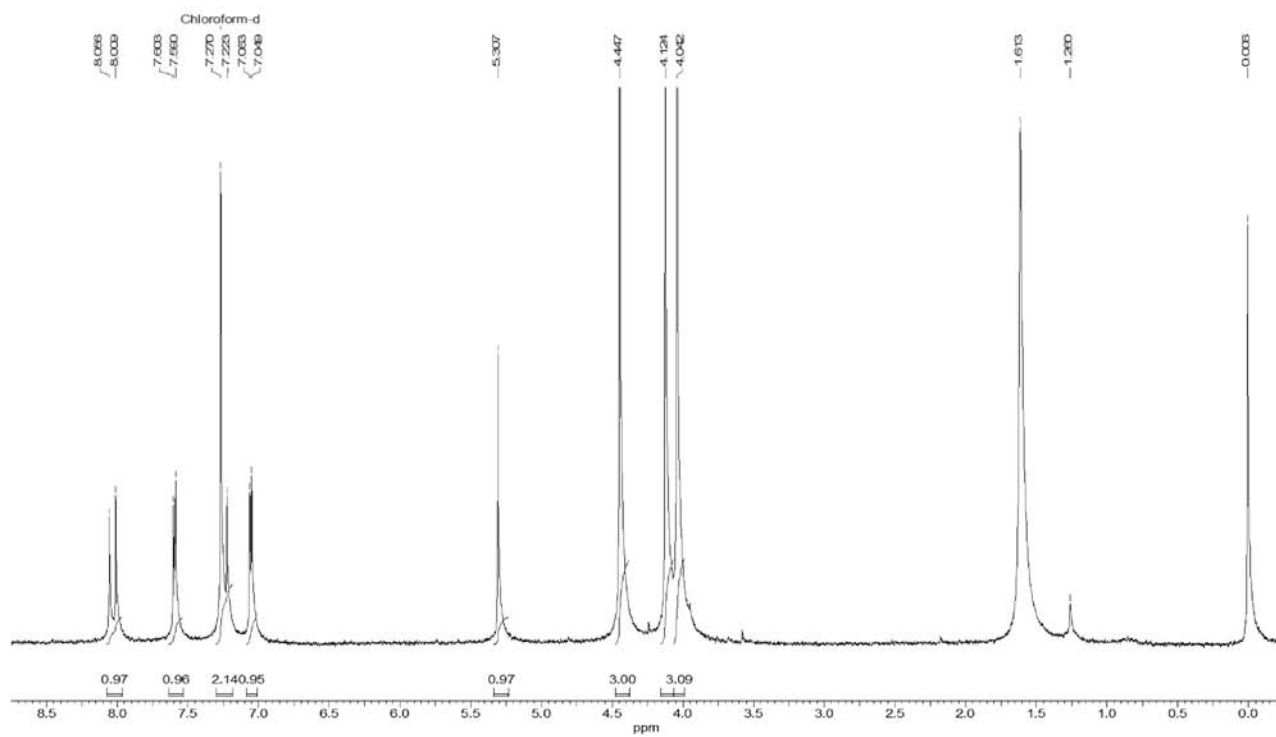


Figure S5. ^1H NMR spectrum of skimmianine (CDCl_3 , 200 MHz).

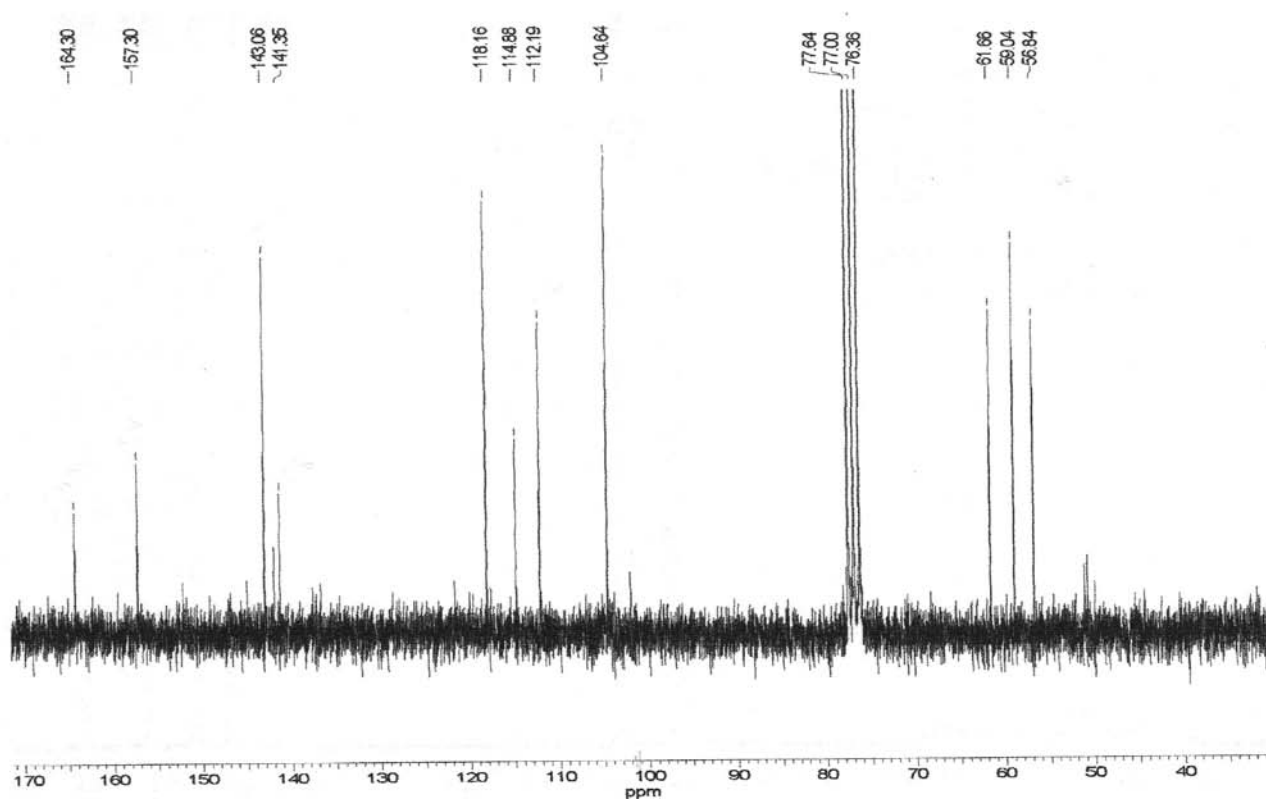


Figure S6. ^{13}C NMR spectrum of skimmianine (CDCl_3 , 200 MHz).

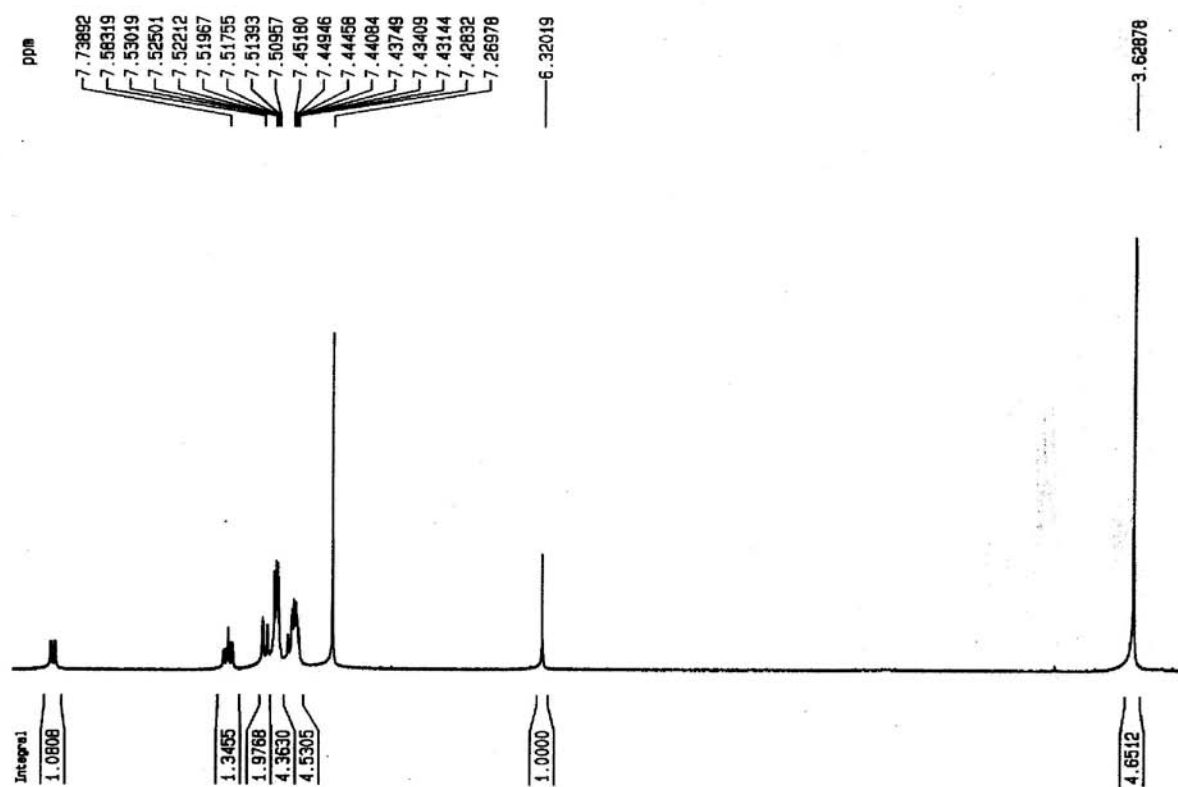


Figure S7. ^1H NMR spectrum of 1-methyl-2-phenylquinolin-4-one (CDCl_3 , 400 MHz).

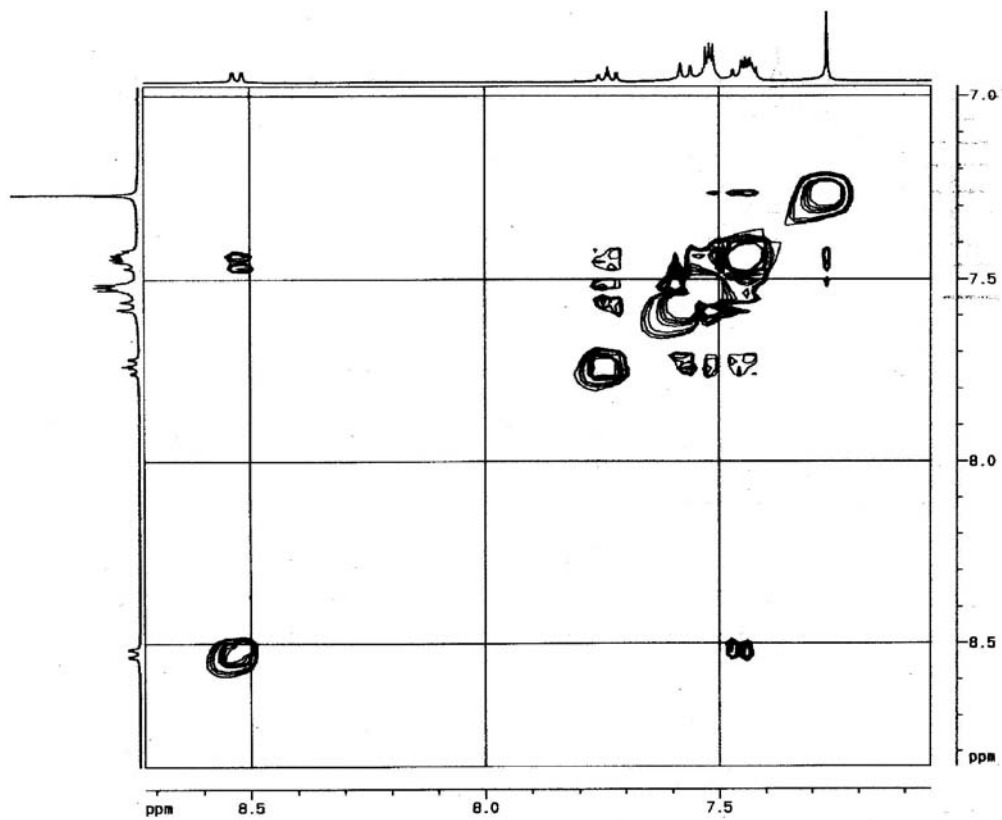


Figure S8. COSY spectrum of 1-methyl-2-phenylquinolin-4-one (CDCl_3 , 400 MHz).

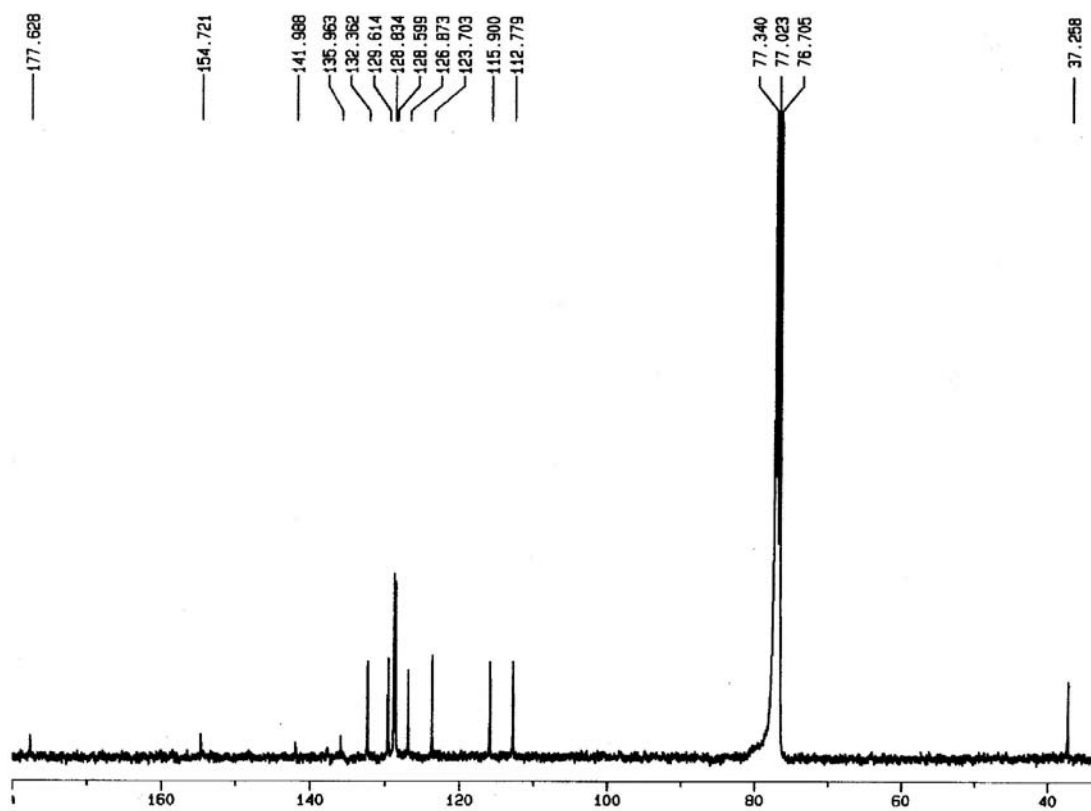


Figure S9. ^{13}C NMR spectrum of 1-methyl-2-phenylquinolin-4-one (CDCl_3 , 400 MHz).

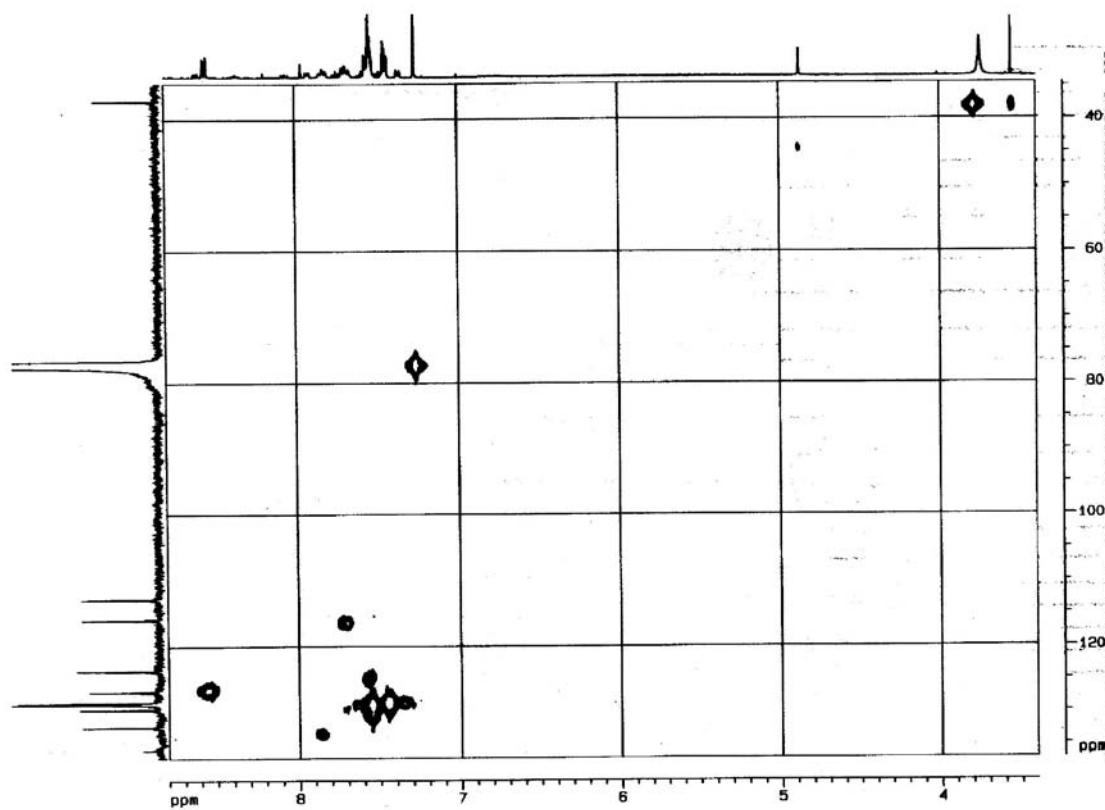


Figure S10. HSQC contour map of 1-methyl-2-phenylquinolin-4-one (CDCl₃, 400 MHz).

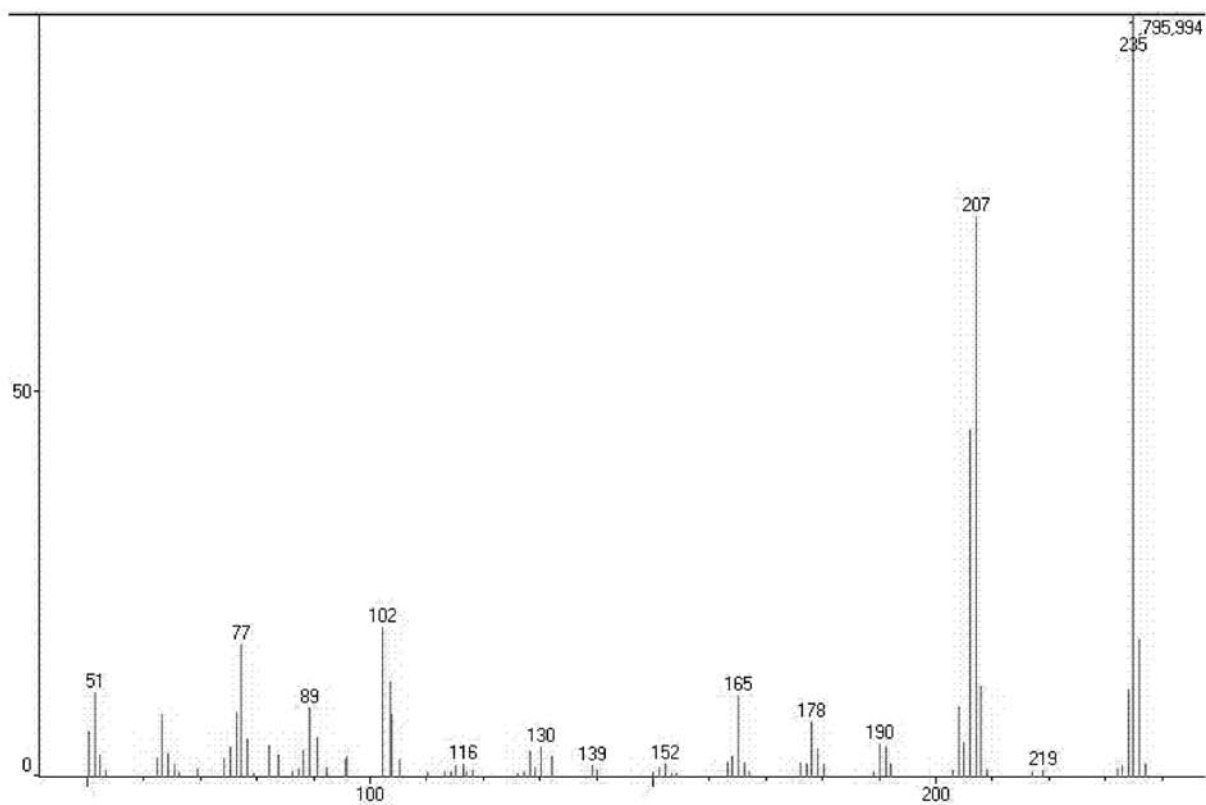


Figure S11. EIMS spectrum of 1-methyl-2-phenylquinolin-4-one.

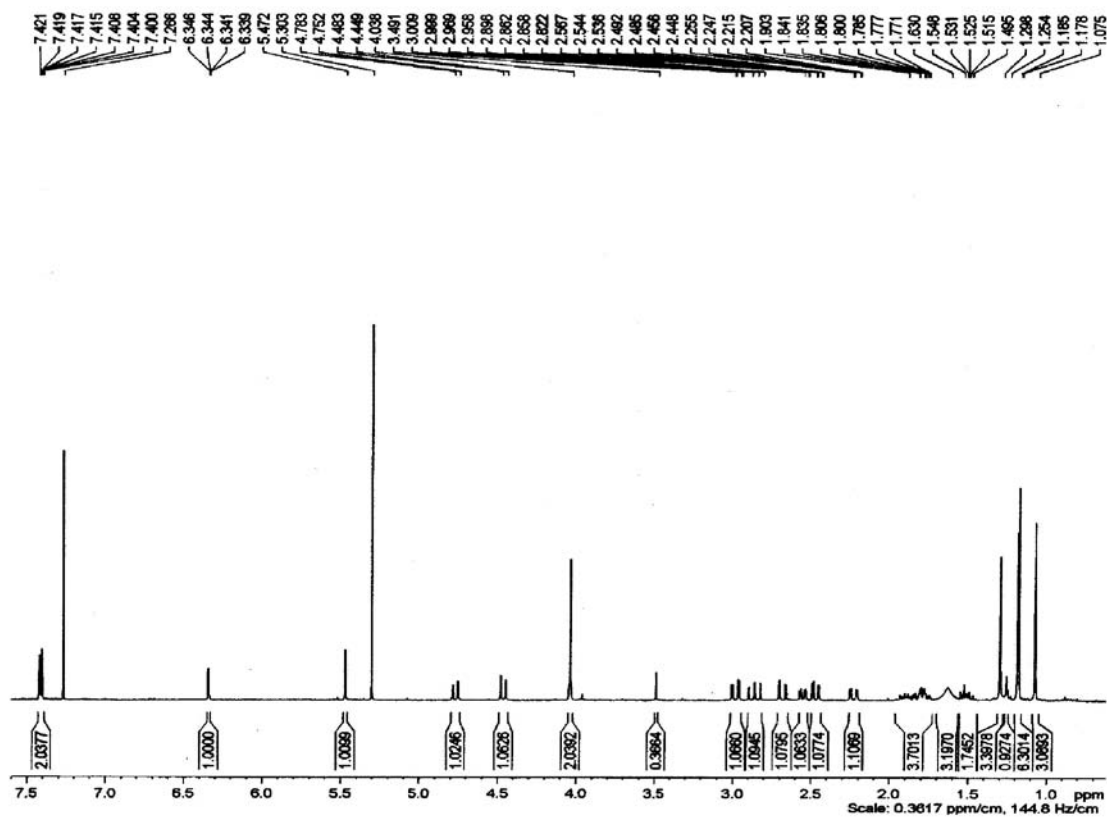


Figure S12. ^1H NMR spectrum of limonin (CDCl_3 , 400 MHz).

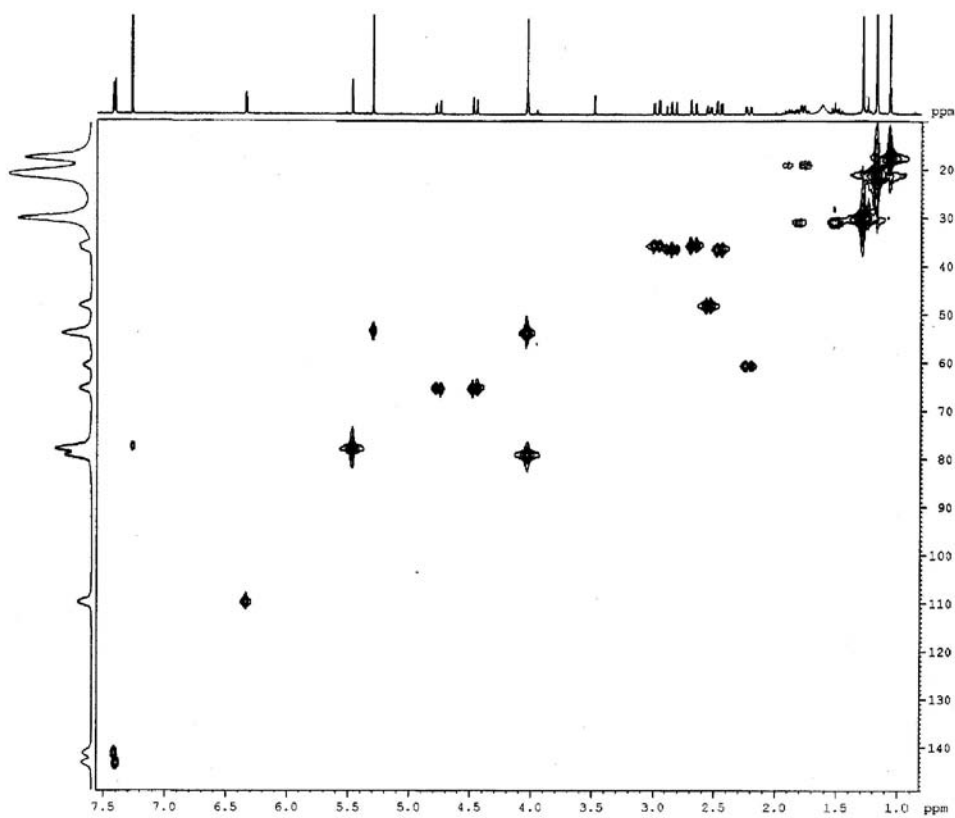


Figure S13. HSQC contour map of limonin (CDCl_3 , 400 MHz).

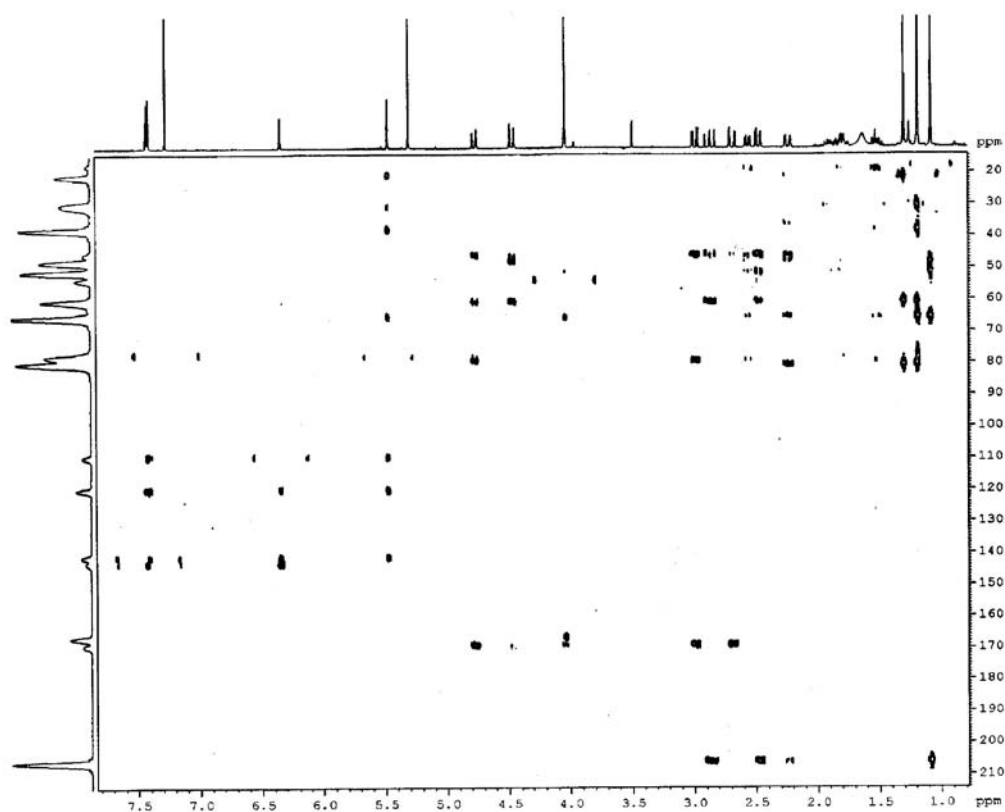


Figure S14. HMBC contour map of limonin (CDCl_3 , 400 MHz).

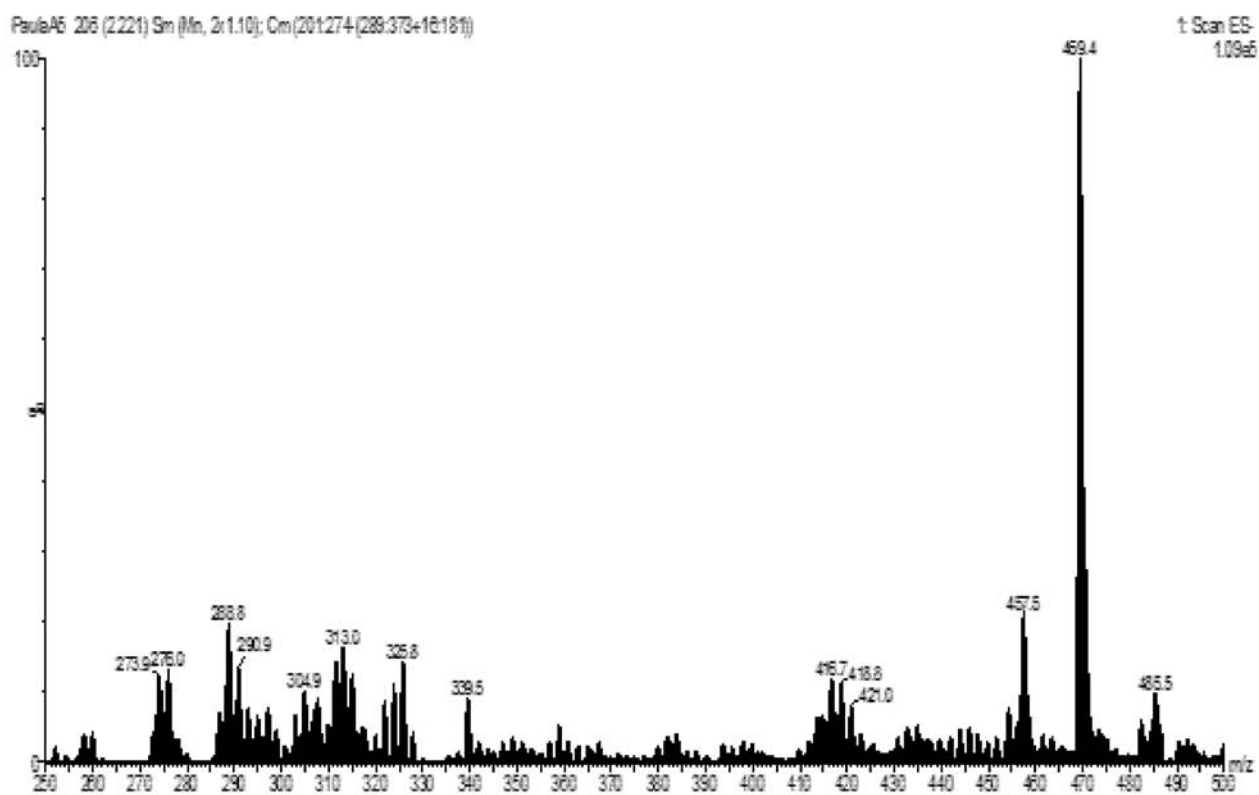


Figure S15. ESIMS spectrum of limonin (negative mode).

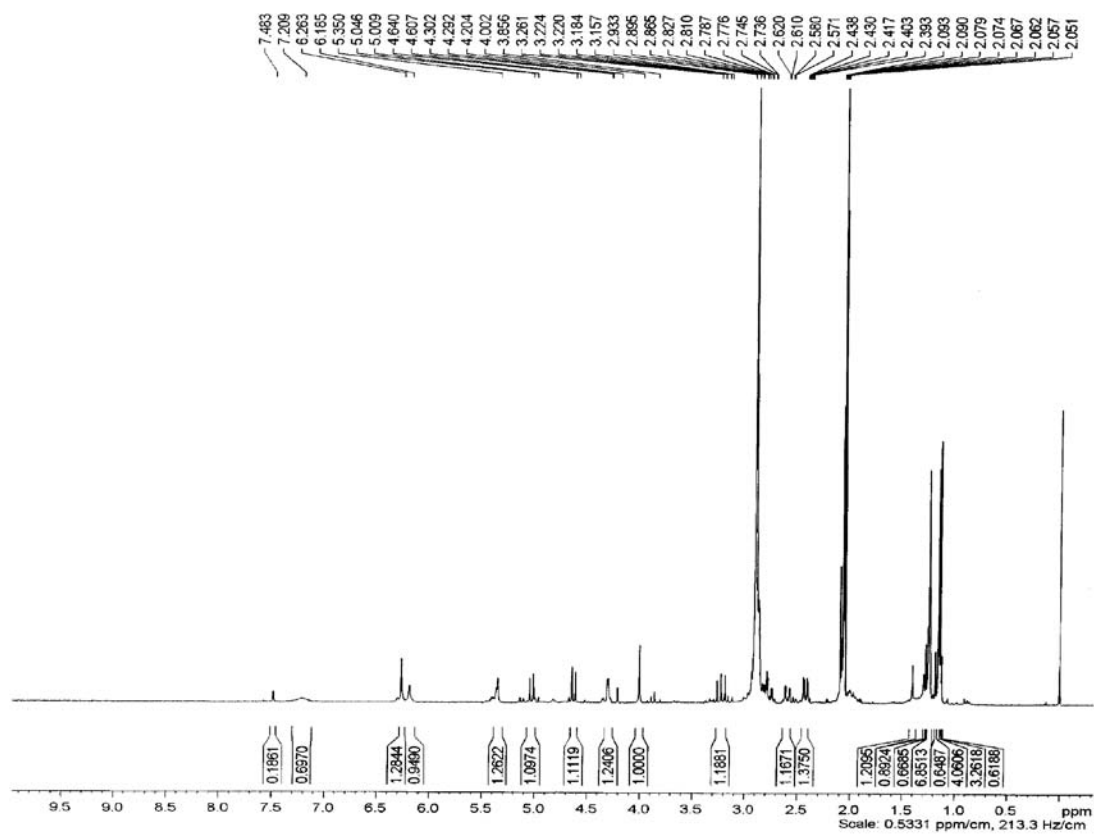


Figure S16. ^1H NMR spectrum of limonexic acid ($\text{acetone-}d_6$, 400 MHz).

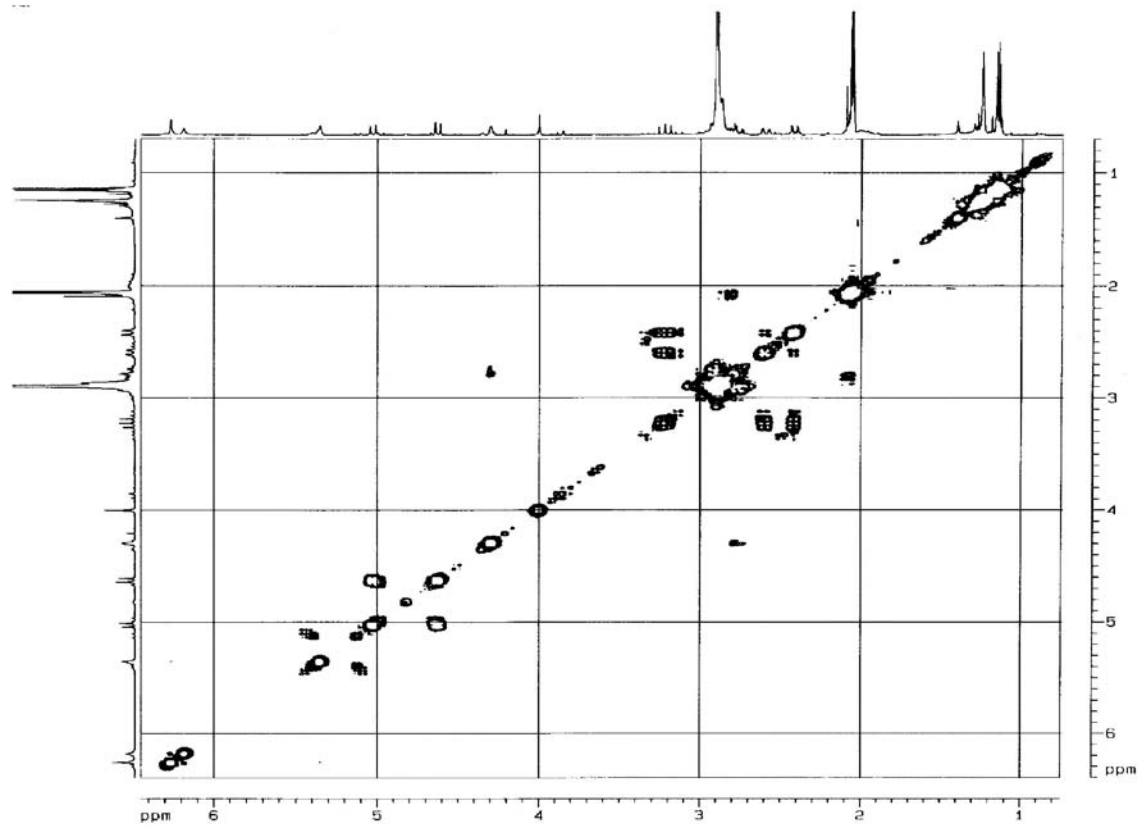


Figure S17. COSY spectrum of limonexic acid ($\text{acetone-}d_6$, 400 MHz).

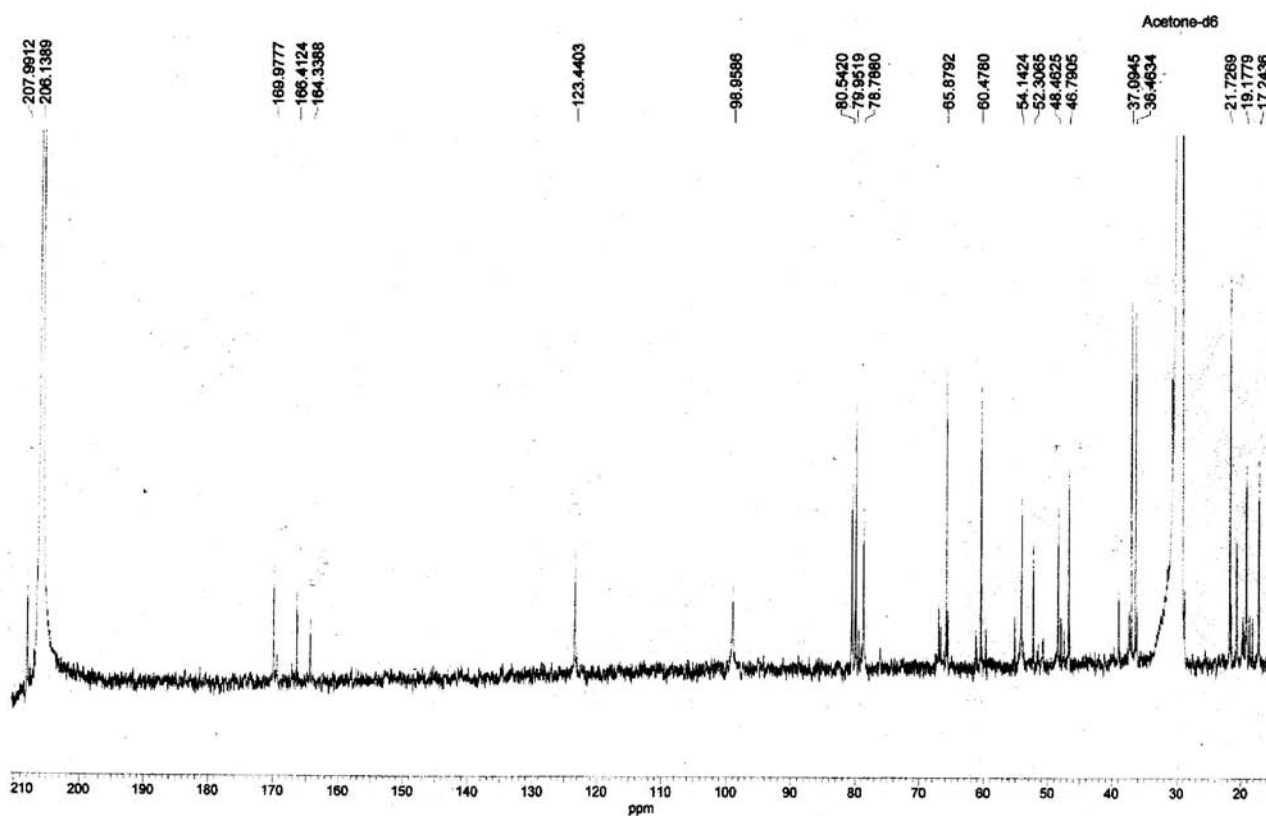


Figure S18. ^{13}C NMR spectrum of limonexic acid (acetone- d_6 , 400 MHz).

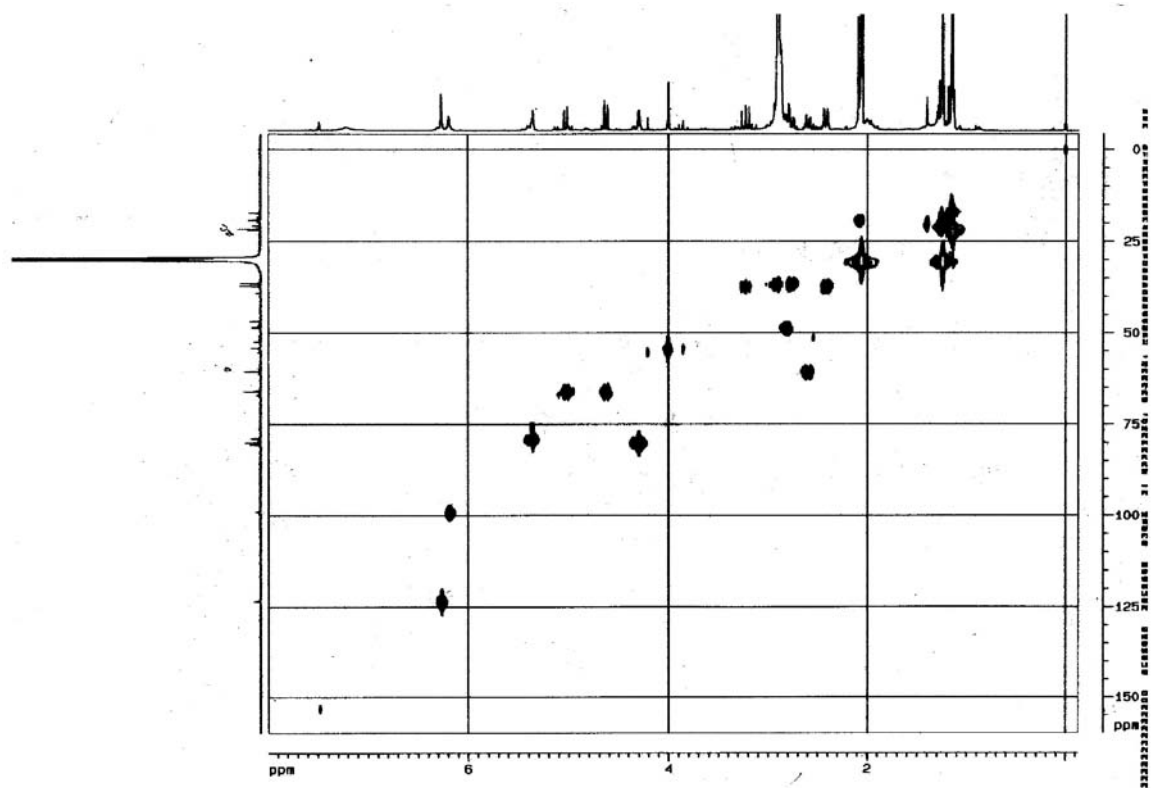


Figure S19. HSQC contour map of limonexic acid (acetone- d_6 , 400 MHz).

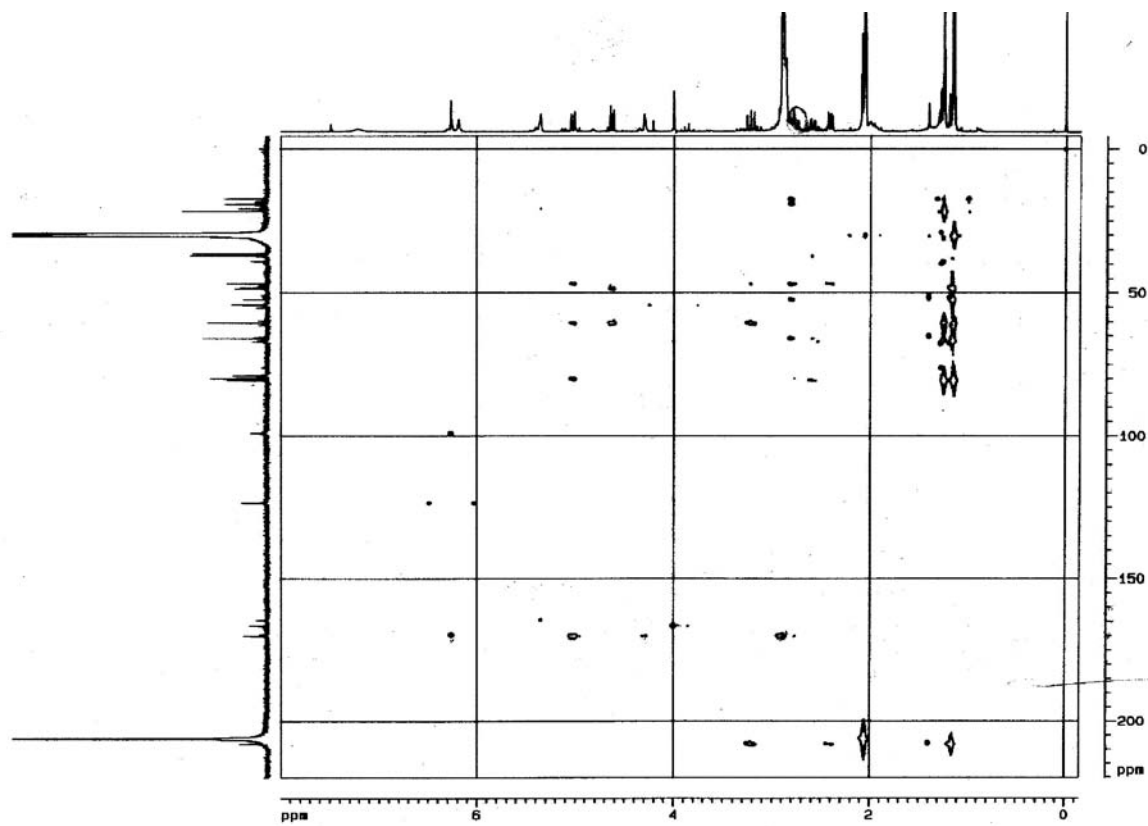


Figure S20. HMBC contour map of limonexic acid (acetone- d_6 , 400 MHz).