

Influence of Fruit Biotypes on the Chemical Composition and Antifungal Activity of the Essential Oils of *Eugenia uniflora* Leaves

Deomar P. Costa,^a Elenilson G. Alves Filho,^a Lorena M. A. Silva,^a Suzana C. Santos,^a
Xisto S. Passos,^{b,d} Maria do Rosário R. Silva,^b José C. Seraphim^c and Pedro H. Ferri^{*a}

^aInstituto de Química, ^bInstituto de Patologia Tropical e Saúde Pública and ^cInstituto de Matemática e Estatística, Universidade Federal de Goiás, CP 131, 74001-970 Goiânia-GO, Brazil

^dInstituto de Ciências da Saúde, Universidade Paulista, 74845-090 Goiânia-GO, Brazil

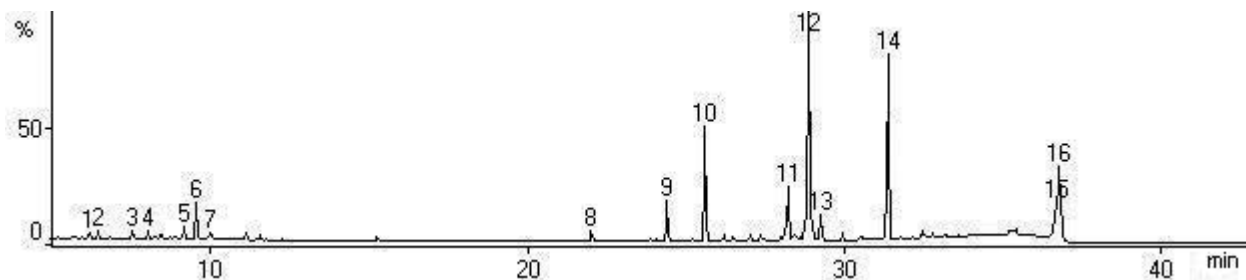


Figure S1. Total ion chromatogram (TIC) of the essential oil from *E. uniflora* leaves (cluster I).

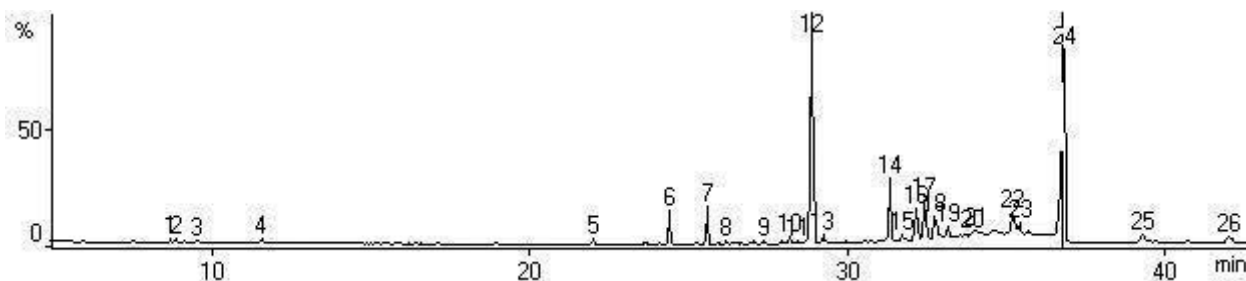


Figure S2. Total ion chromatogram (TIC) of the essential oil from *E. uniflora* leaves (cluster II).

*e-mail: pedro@quimica.ufg.br

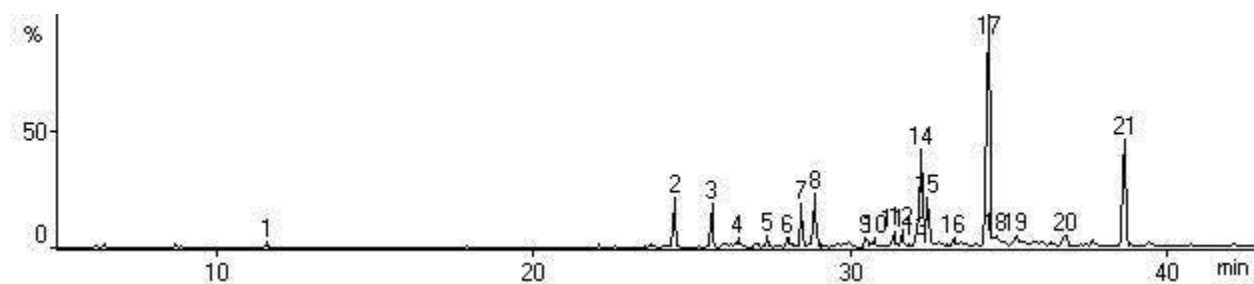


Figure S3. Total ion chromatogram (TIC) of the essential oil from *E. uniflora* leaves (cluster III).

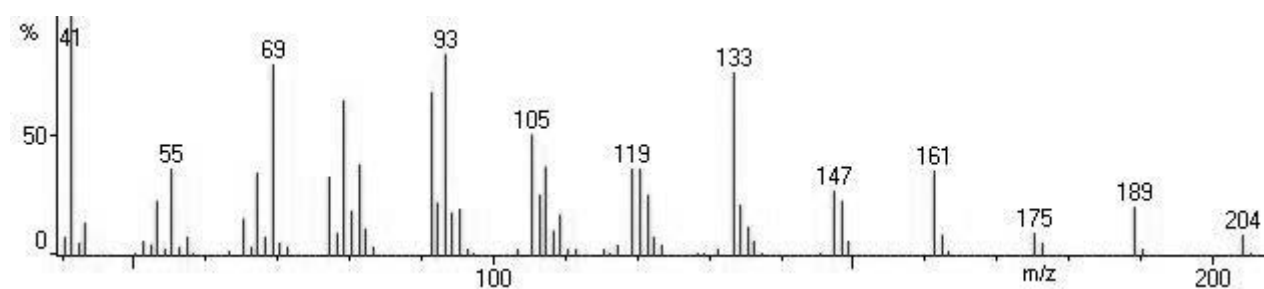


Figure S4. Mass spectrum of β -caryophyllene.

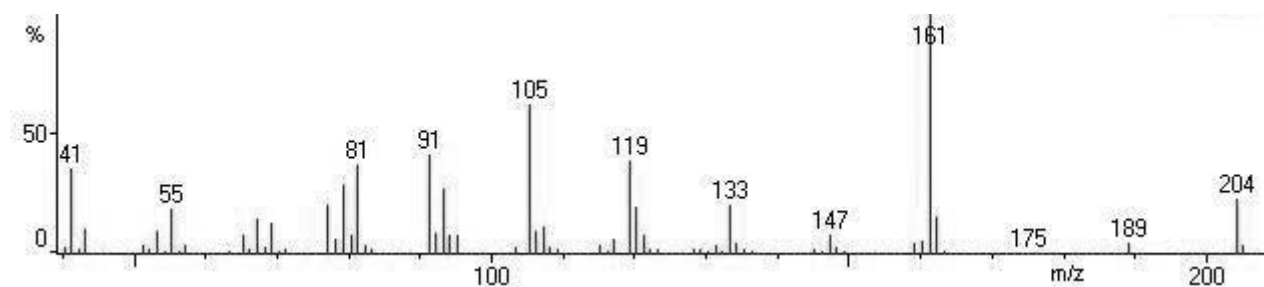


Figure S5. Mass spectrum of germacrene D.

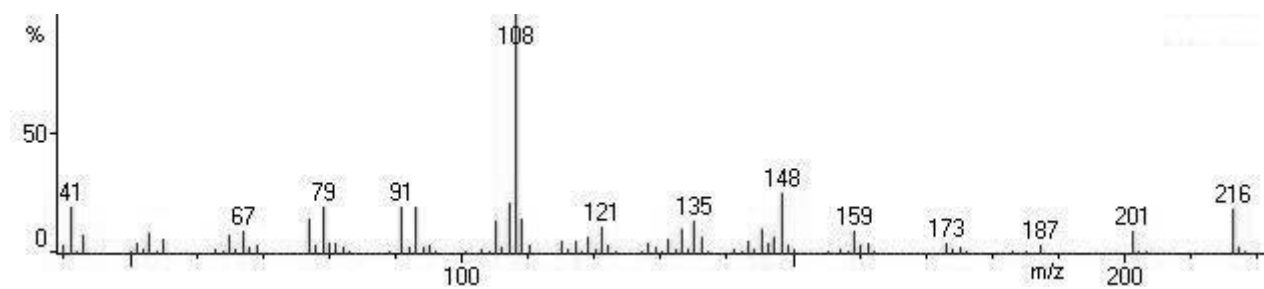


Figure S6. Mass spectrum of curzerene.

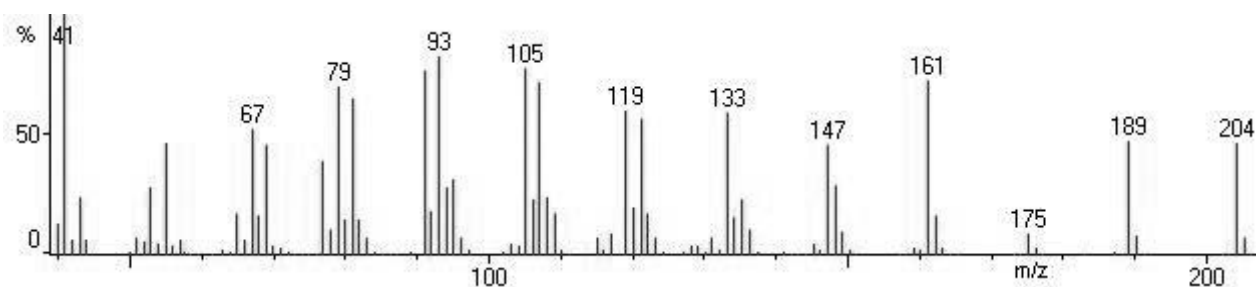


Figure S7. Mass spectrum of germacrene A.

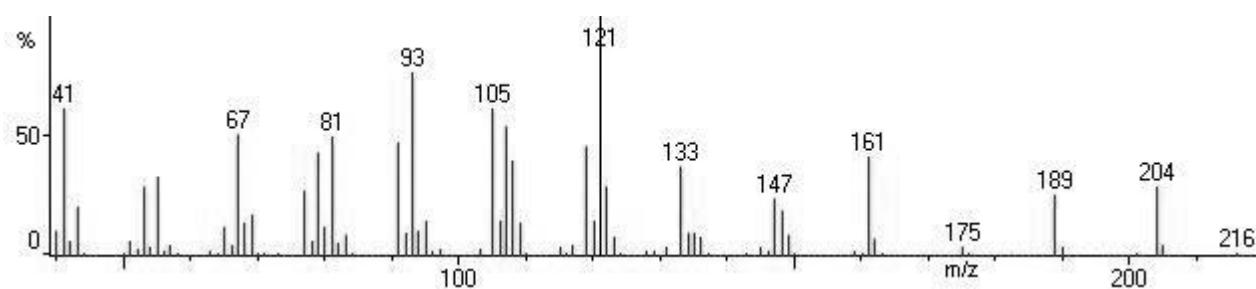


Figure S8. Mass spectrum of germacrene B.

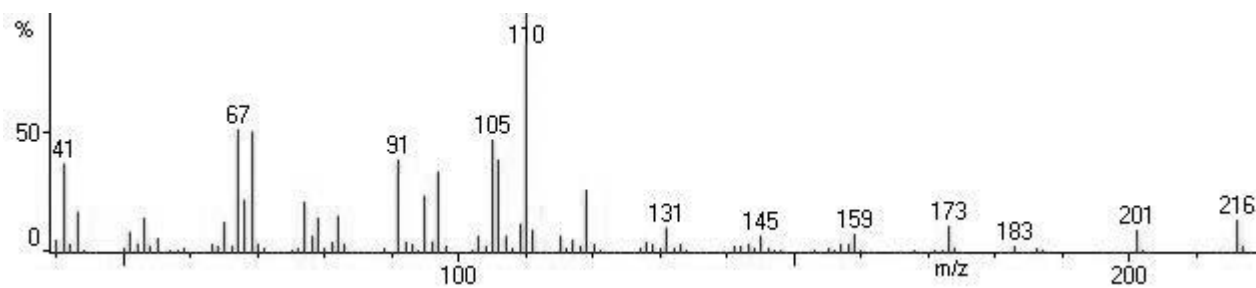


Figure S9. Mass spectrum of selina-1,3,7(11)-trien-8-one.

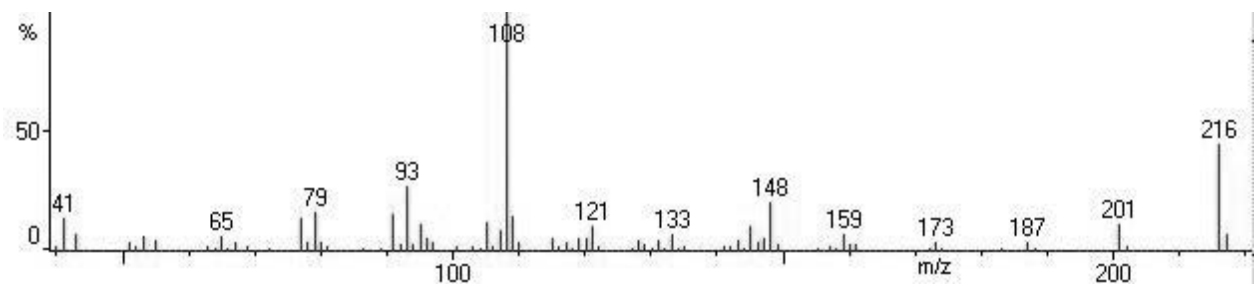


Figure S10. Mass spectrum of atractylone.

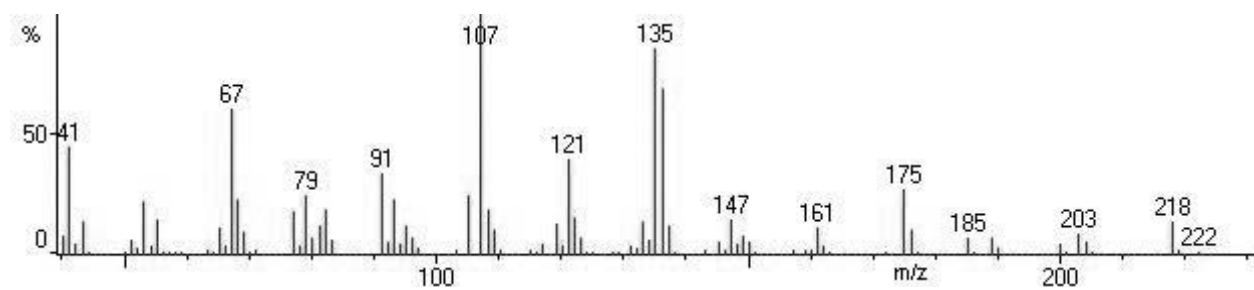


Figure S11. Mass spectrum of germacrone.

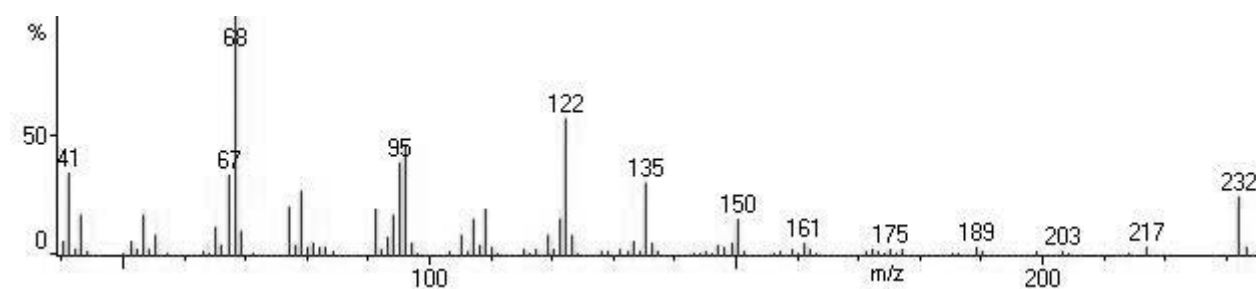


Figure S12. Mass spectrum of selina-1,3,7(11)-trien-8-one epoxide.