

Changes in the Volatile Organic Profile of *Schinus polygamus* (Anacardiaceae) and *Baccharis spicata* (Asteraceae) Induced by Galling Psyllids

Flaviana C. Damasceno,^a Karine P. Nicolli,^a Elina Bastos Caramão,^a
Geraldo L. G. Soares^b and Cláudia A. Zini^{*a}

^aLAO, Laboratório de Química Analítica Ambiental e Oleoquímica, Instituto de Química and
^bDepartamento de Botânica, Instituto de Biociências, Universidade Federal do Rio Grande do Sul,
Av. Bento Gonçalves 9500, 91501 970 Porto Alegre-RS, Brazil

Mass spectra of compounds that were tentatively identified using retention indices and mass spectra comparison, having retention indices and mass spectra database of standard compounds (Wiley, 6th edition) as standards. Percentages report the similarity between mass spectra of the standard compound found in the Wiley mass spectra library and the one found in the headspace of the plant.

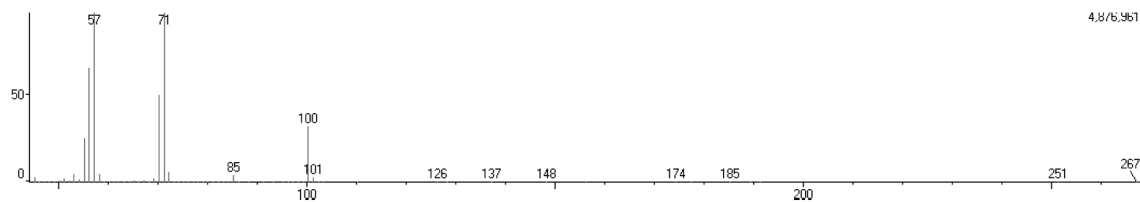


Figure S1. Compound 6, *n*-heptane (97%).

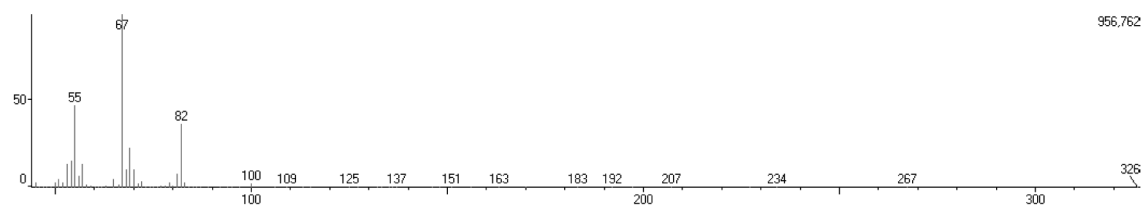


Figure S2. Compound 13, (*E*)-3-hexenol (94%).

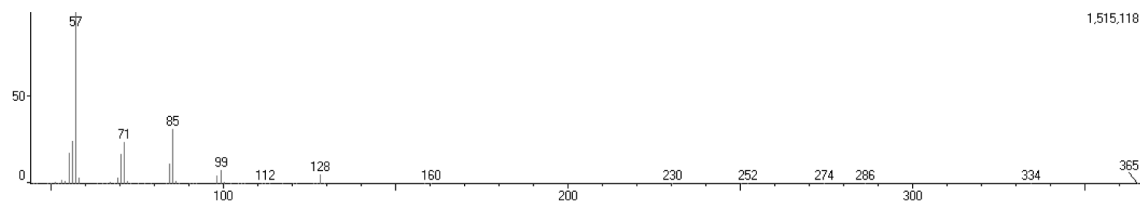


Figure S3. Compound 15, *n*-nonane (97%).

*e-mail: cazini@iq.ufrgs.br

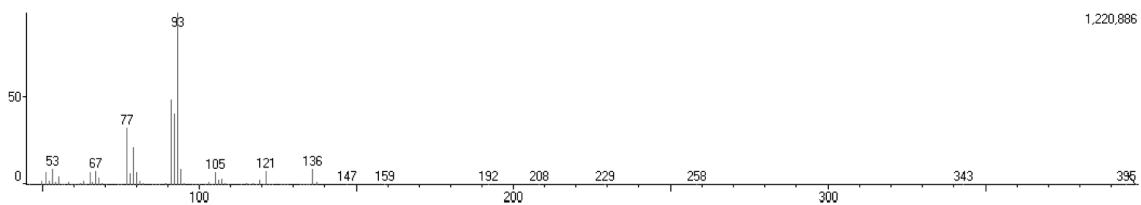


Figure S4. Compound 16, thujene (93%).

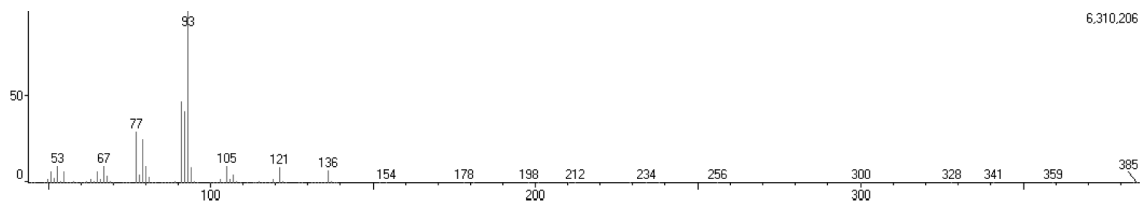


Figure S5. Compound 17, α -pinene (98%).

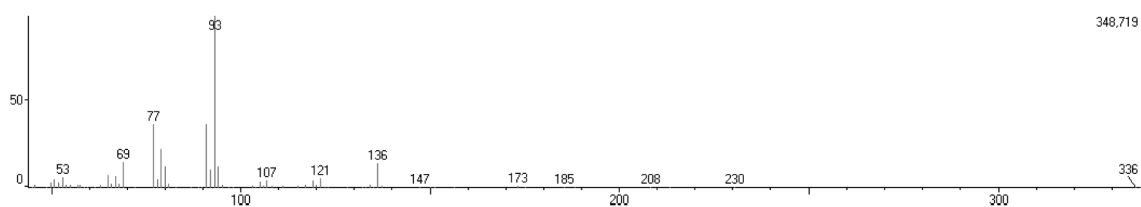


Figure S6. Compound 18, sabinene (94%).

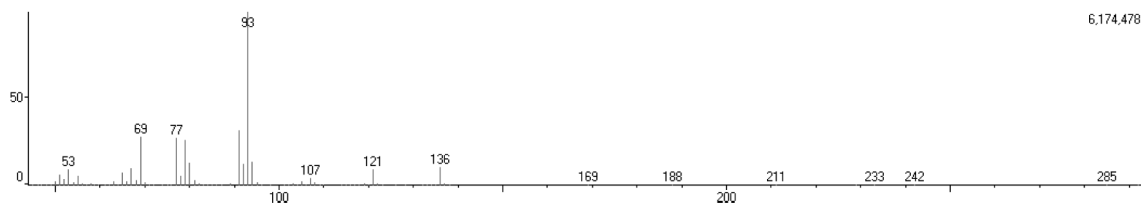


Figure S7. Compound 19, β -pinene (97%).

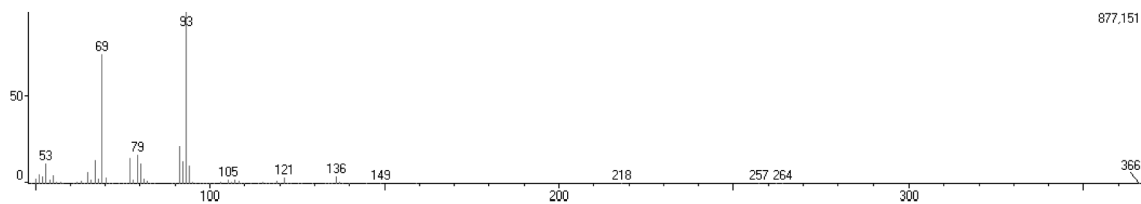


Figure S8. Compound 20, myrcene (97%).

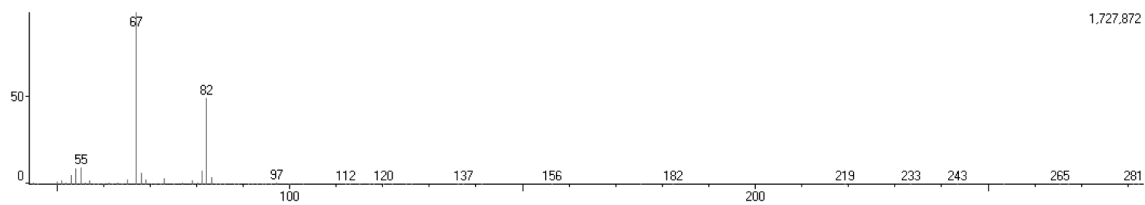


Figure S9. Compound 21, *cis*-3-hexenyl acetate (96%).

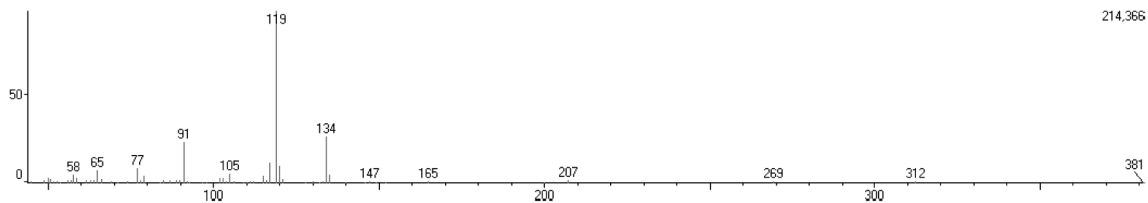


Figure S10. Compound 22, *o*-cymene (92%).

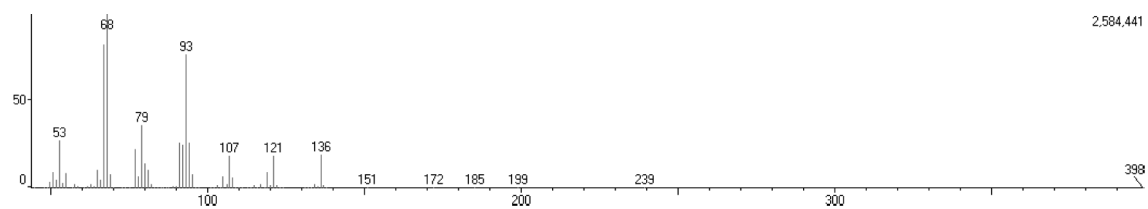


Figure S11. Compound 23, limonene (98%).

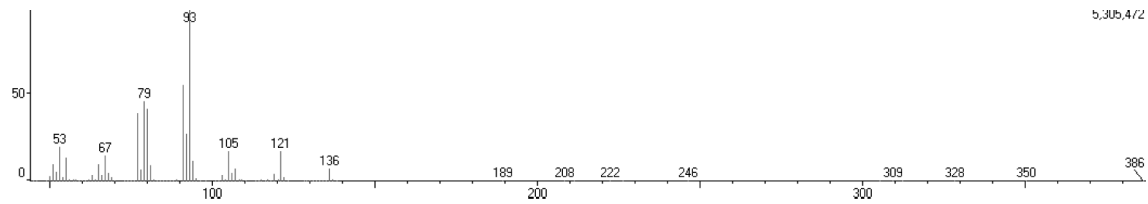


Figure S12. Compound 24, Δ -3-carene (93%).

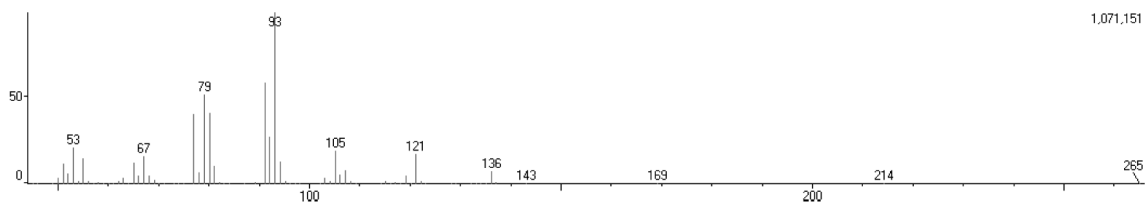


Figure S13. Compound 25, (*Z*)- β -ocimene (91%).

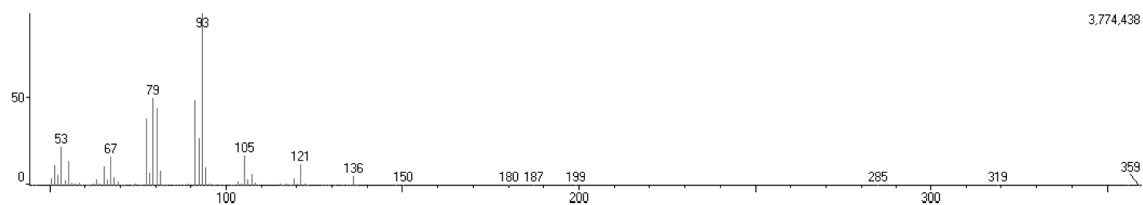


Figure S14. Compound 26, (*E*)- β -ocimene (95%).

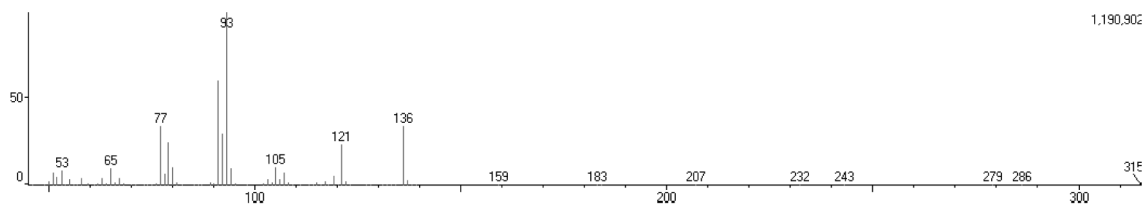


Figure S15. Compound 27, γ -terpinene (97%).

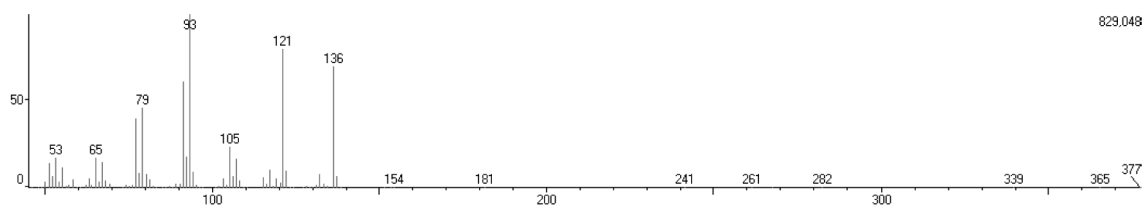


Figure S16. Compound 31, terpinolene (95%).

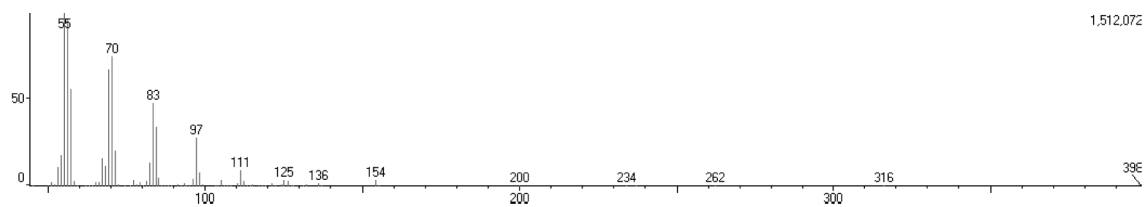


Figure S17. Compound 33, 1-undecene (96%).

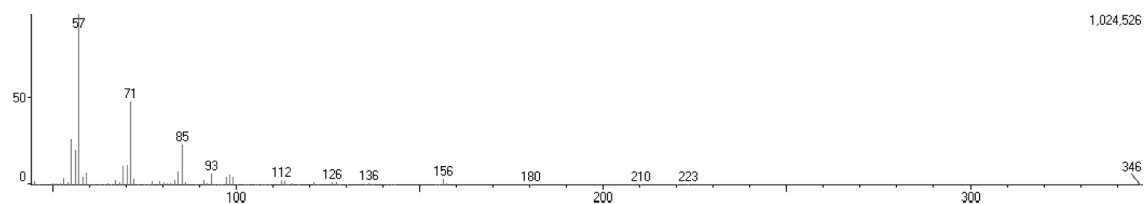


Figure S18. Compound 35, *n*-undecane (91%).

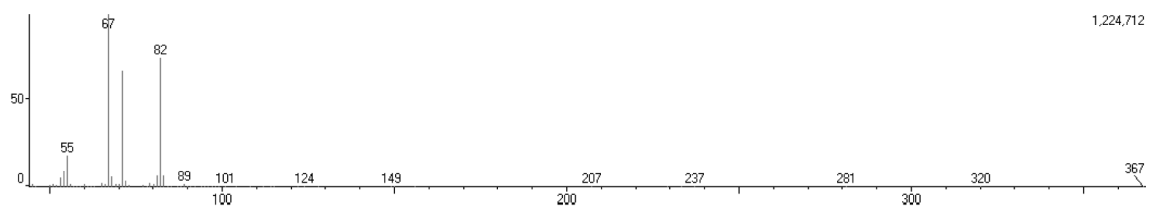


Figure S19. Compound 39, *cis*-3-hexenyl butanate (98%).

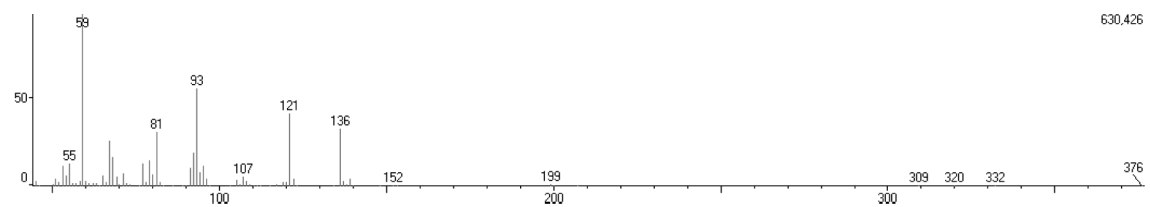


Figure S20. Compound 40, α -terpineol (96%).

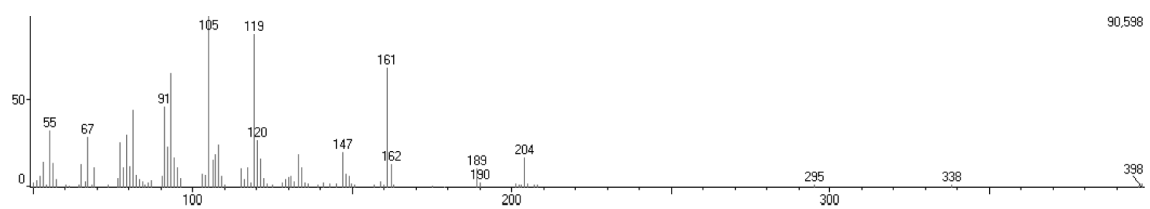


Figure S21. Compound 45, α -copaene (89%).

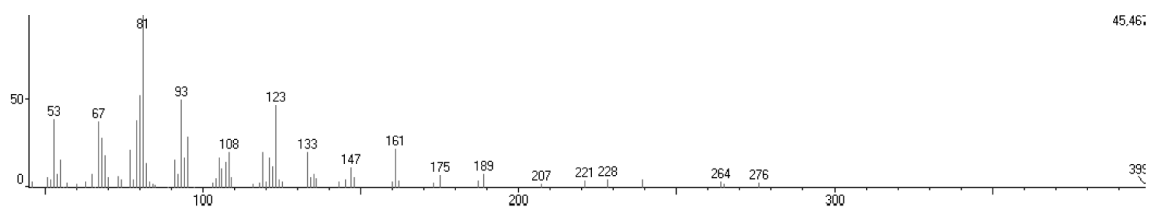


Figure S22. Compound 46, β -bourbonene (85%).

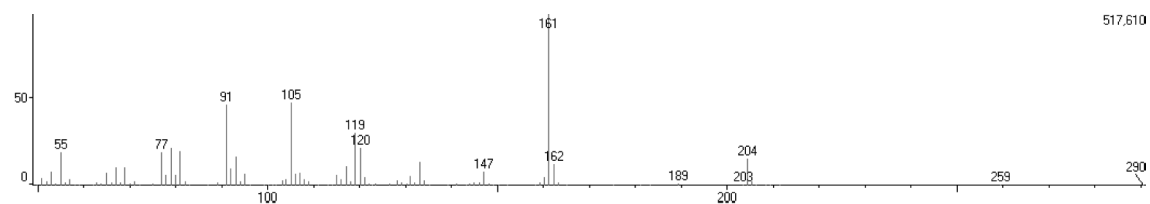


Figure S23. Compound 47, β -cubebene (94%).

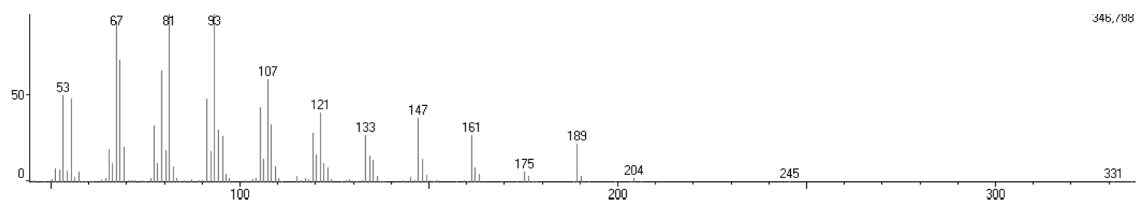


Figure S24. Compound 48, β -elemene (95%).

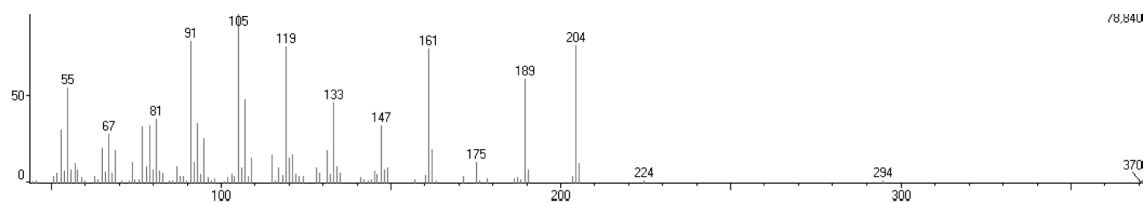


Figure S25. Compound 49, α -gurjunene (93%).

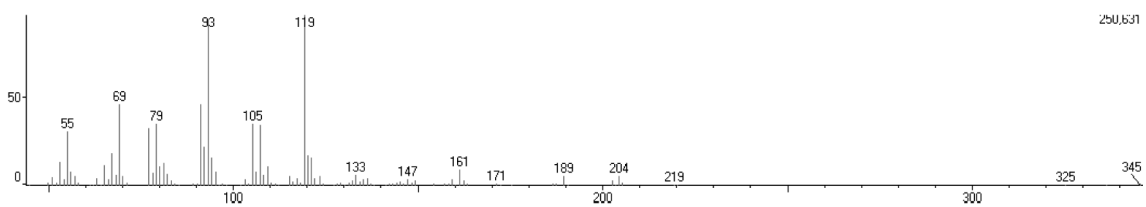


Figure S26. Compound 50, *cis*- α -bergamotene (91%).

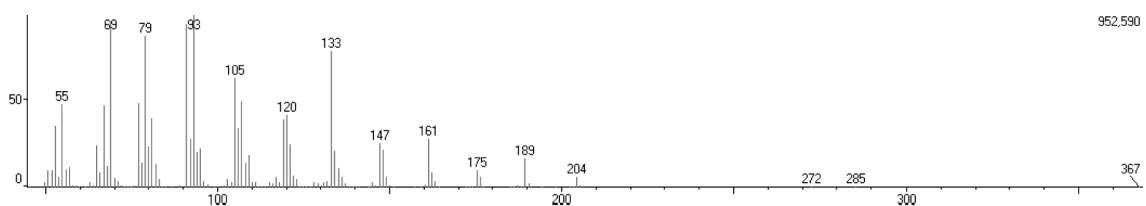


Figure S27. Compound 51, (*E*)-caryophyllene (95%).

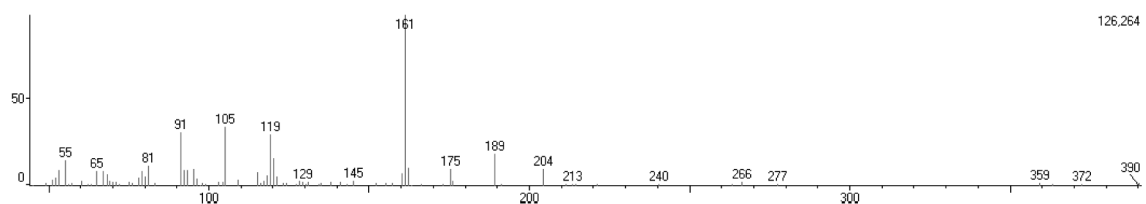


Figure S28. Compound 52, β -gurjunene (85%).

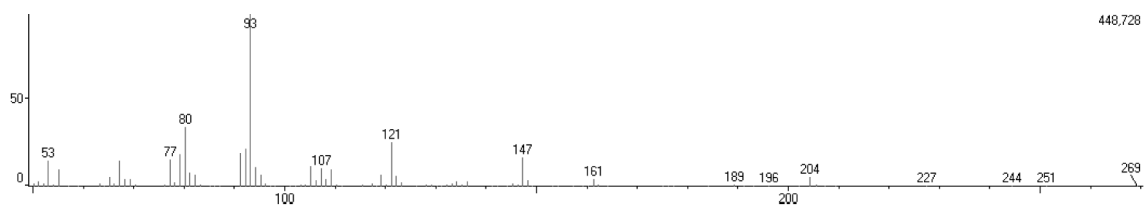


Figure S29. Compound **53**, α -humulene (96%).

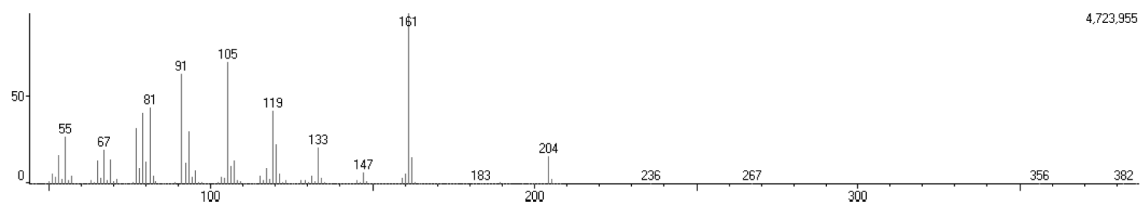


Figure S30. Compound **54**, γ -murolene (88%).

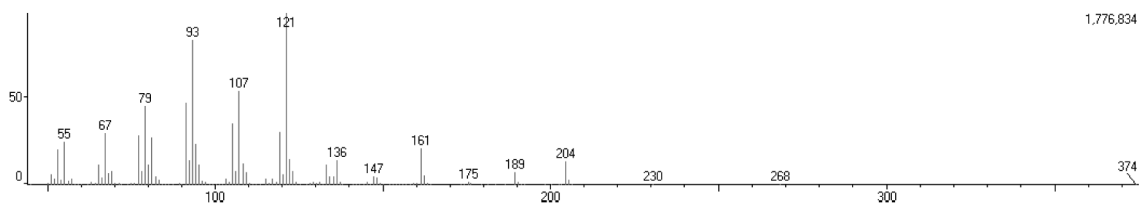


Figure S31. Compound **55**, bicyclgermacrene (94%).

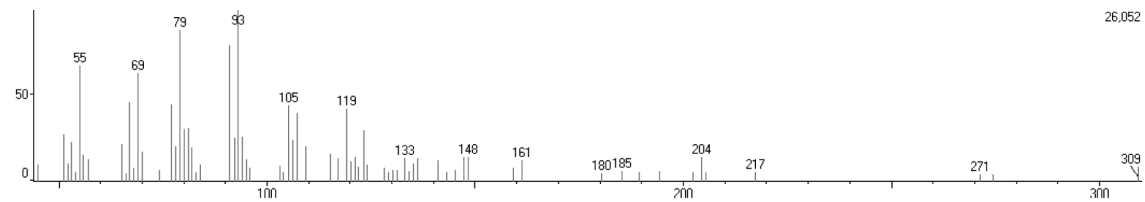


Figure S32. Compound **56**, (*E,E*)- α -farnesene (85%).

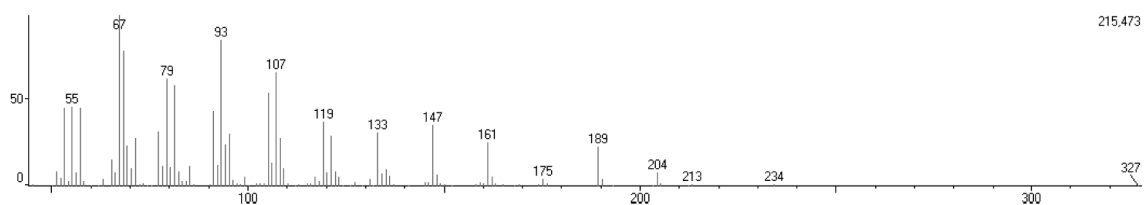


Figure S33. Compound **58**, germacrene A (91%).

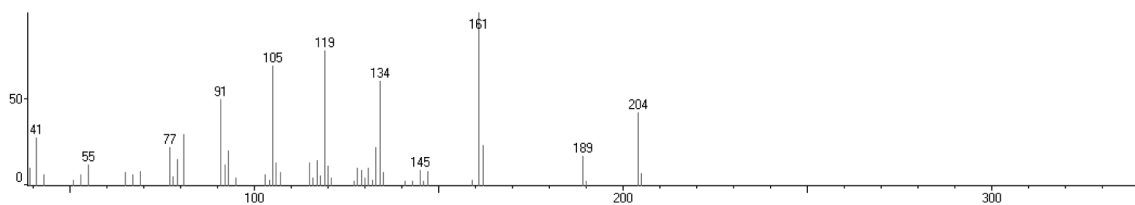
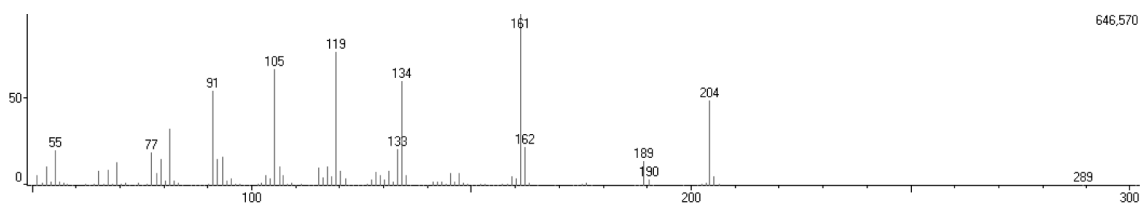
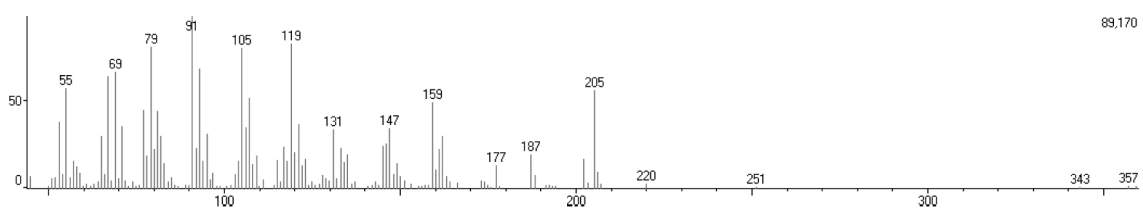
Figure S34. Compound 60, γ -cadinene (95%).Figure S35. Compound 61, δ -cadinene (96%).

Figure S36. Compound 62, spathulenol (93%).

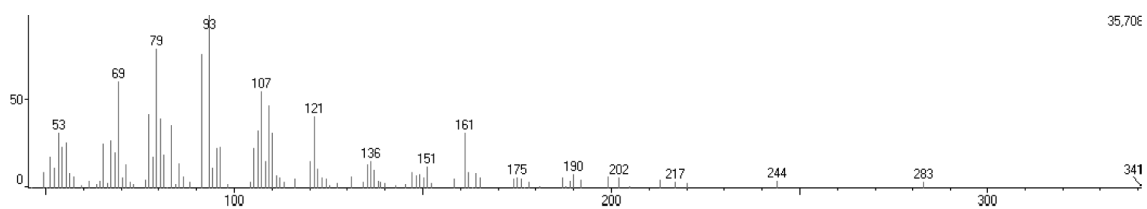


Figure S37. Compound 63, caryophyllene oxide (85%).