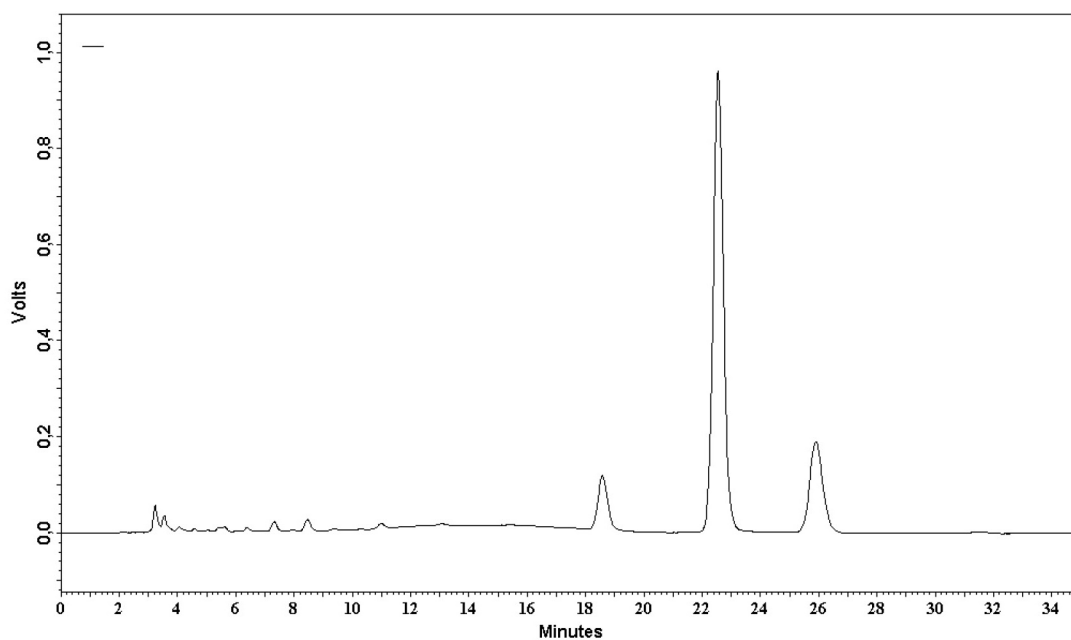


**Fatty Acid Profiles and Tocopherol Contents of Buriti (*Mauritia flexuosa*), Patawa (*Oenocarpus bataua*), Tucuma (*Astrocaryum vulgare*), Mari (*Poraqueiba paraensis*) and Inaja (*Maximiliana maripa*) Fruits**

*Antonio M. da Cruz Rodrigues,<sup>a</sup> Sylvain Darnet<sup>b</sup> and Luiza H. Meller da Silva<sup>\*a</sup>*

*<sup>a</sup>Instituto de Tecnologia and <sup>b</sup>Instituto de Ciências Biológicas, Universidade Federal do Pará, 66.075-900 Belém-PA, Brazil*



**Figure S1.** RP-HPLC-FLD chromatogram of tocopherols in buriti pulp.

\*e-mail: lhmeller@ufpa.br

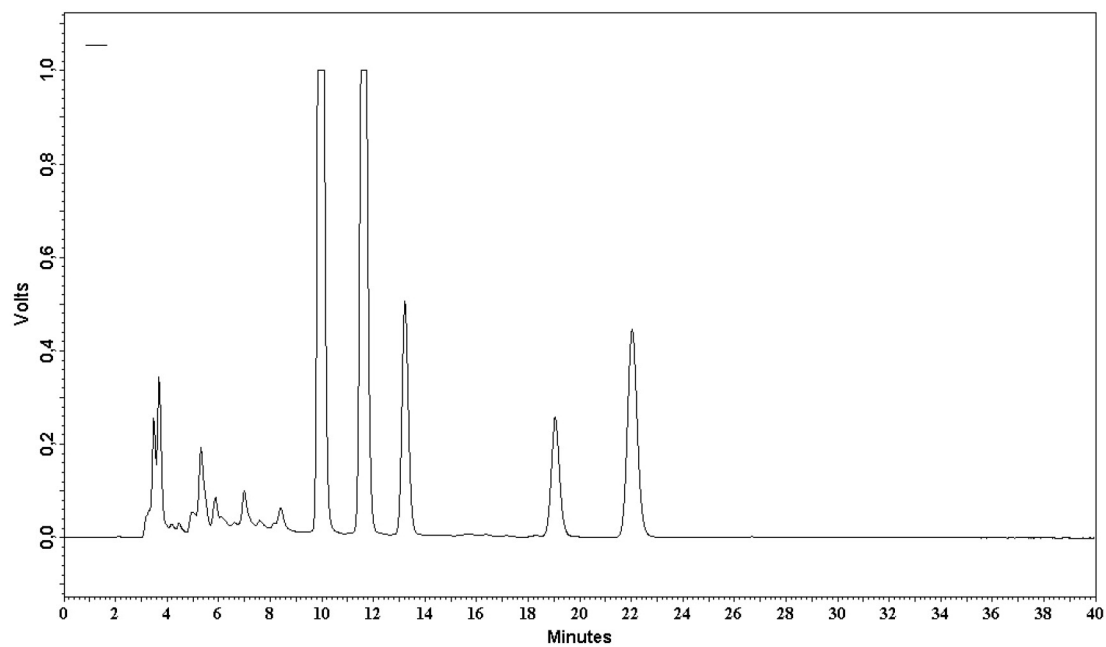


Figure S2. RP-HPLC-FLD chromatogram of tocopherols in inaja pulp.

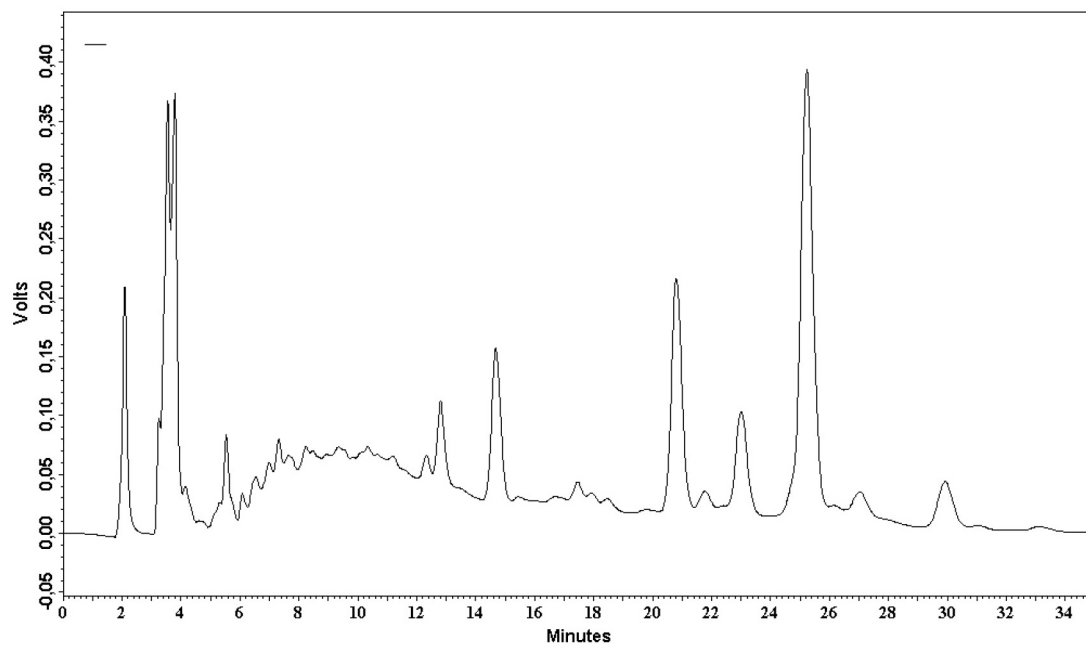


Figure S3. RP-HPLC-FLD chromatogram of tocopherols in patawa pulp.

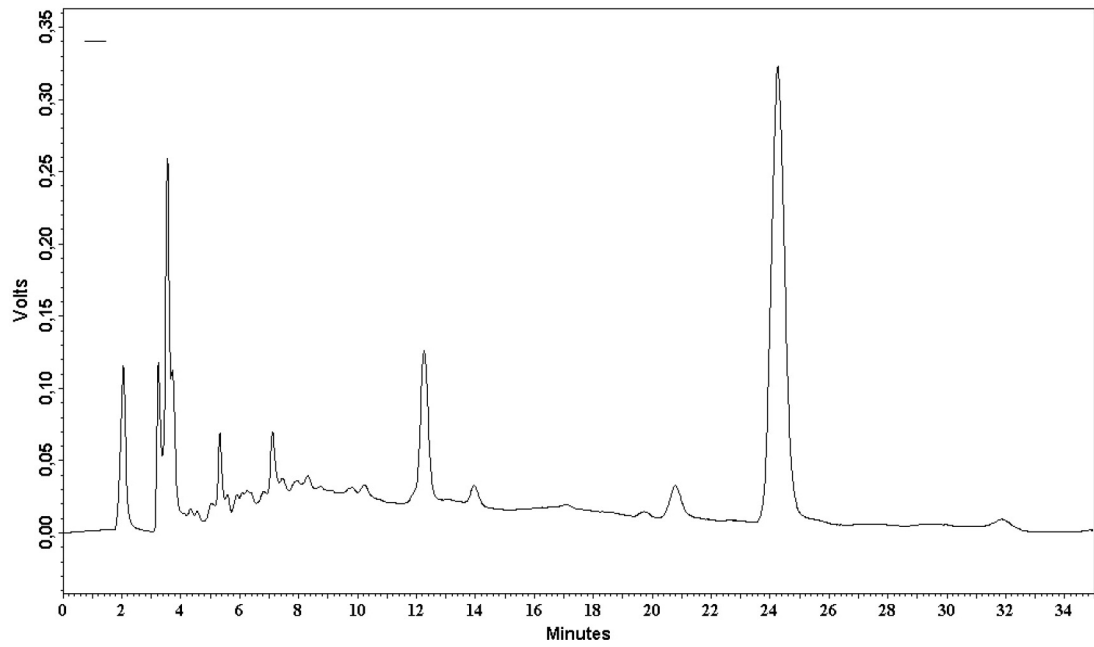


Figure S4. RP-HPLC-FLD chromatogram of tocopherols in tucuma pulp.

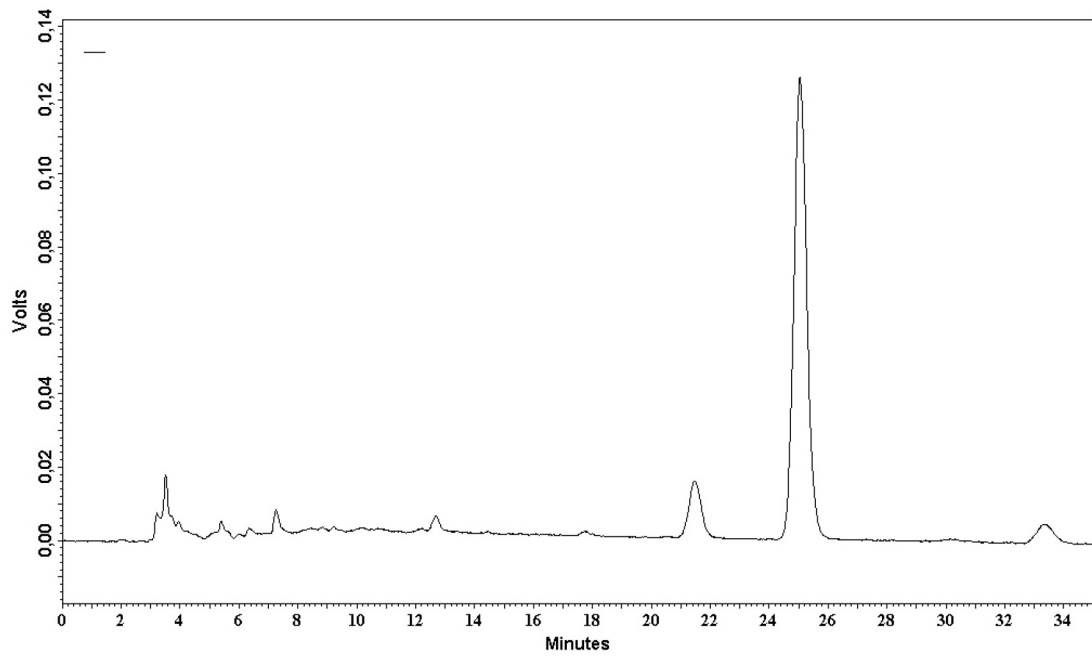


Figure S5. RP-HPLC-FLD chromatogram of tocopherols in mari pulp.

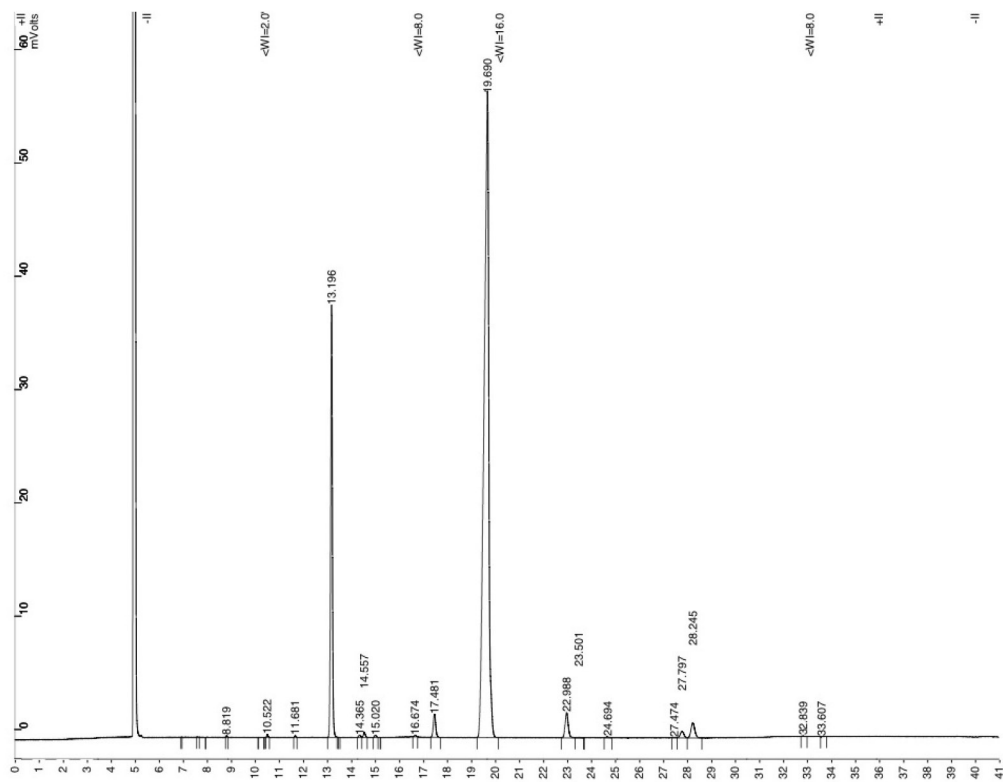


Figure S6. GC-FID chromatogram of fatty acids in buriti pulp.

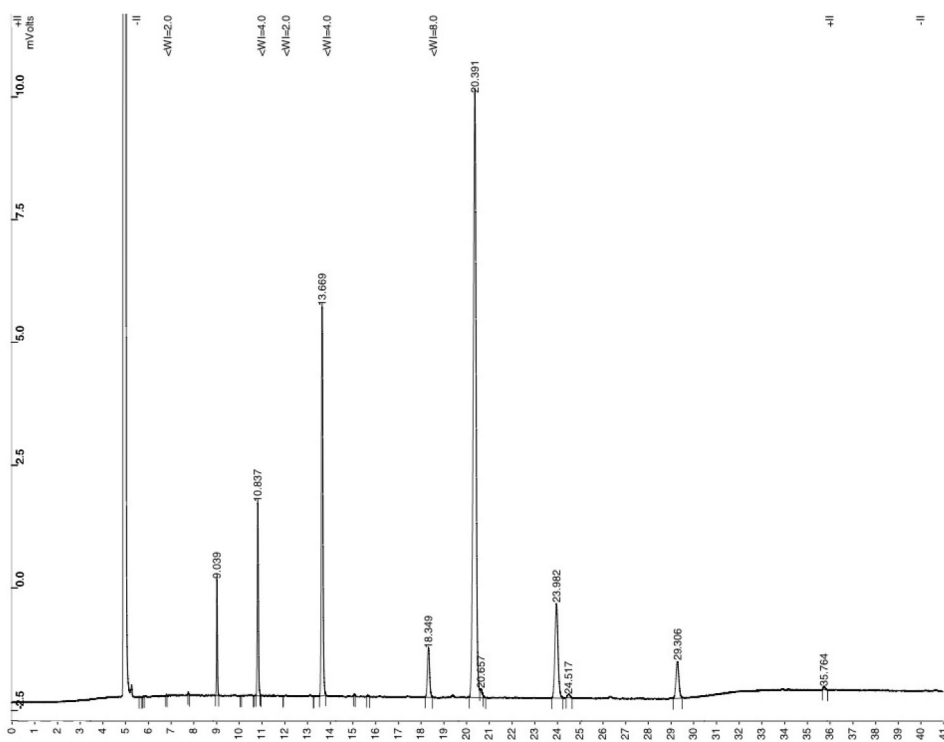


Figure S7. GC-FID chromatogram of fatty acids in inaja pulp.

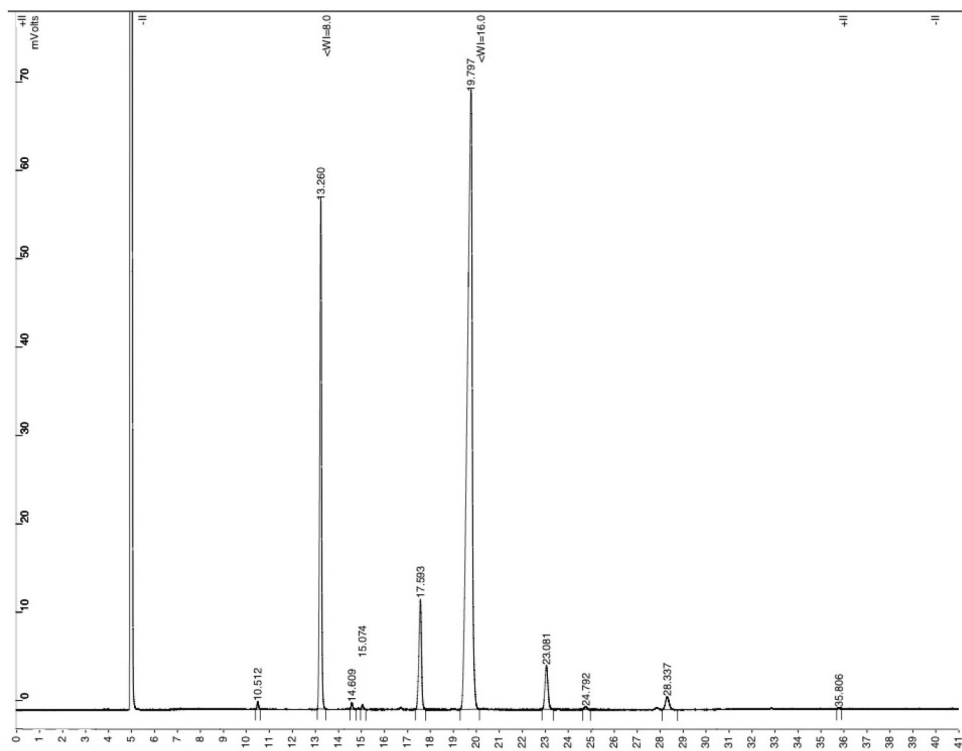


Figure S8. GC-FID chromatogram of fatty acids in mari pulp.

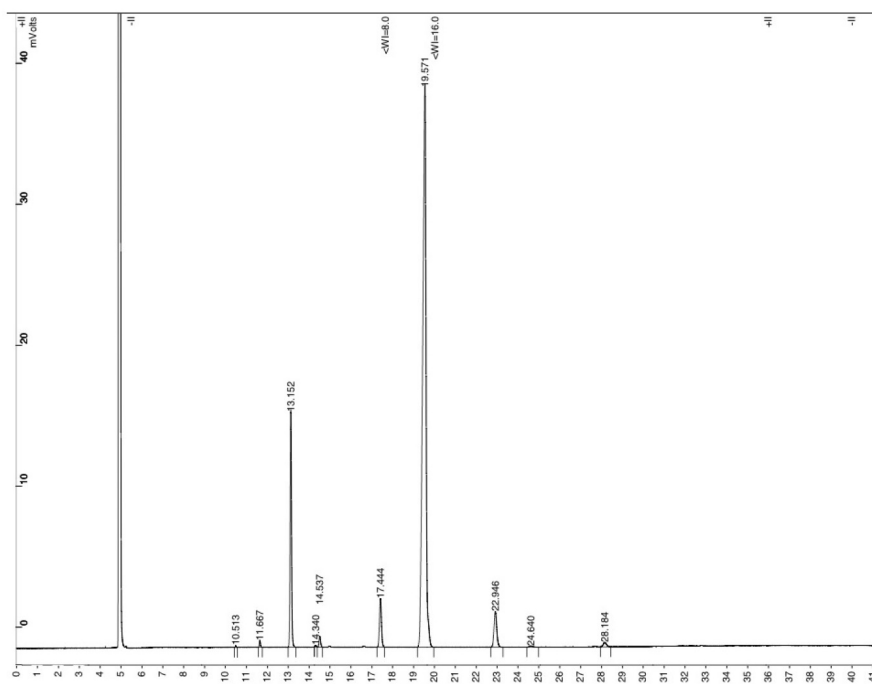


Figure S9. GC-FID chromatogram of fatty acids in patawa pulp.

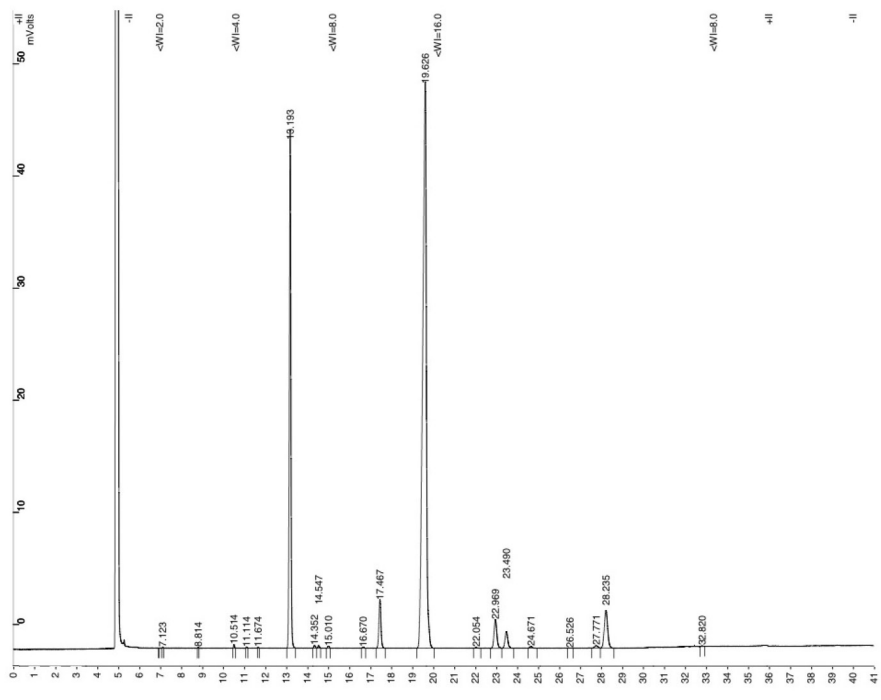


Figure S10. GC-FID chromatogram of fatty acids in tucuma pulp.