

In Situ and *Ex Situ* Preparations of ZnO/Poly- $\{trans\text{-}[\text{RuCl}_2(\text{vpy})_4]\text{/styrene}\}$ Nanocomposites

Karen Segala,^{*,a,b} Rosilene L. Dutra,^a César V. Franco,^a
Angela S. Pereira^b and Tito Trindade^b

^aDepartamento de Química, Universidade Federal de Santa Catarina,
88040-900 Florianópolis-SC, Brazil

^bDepartamento de Química and CICECO, Universidade de Aveiro, 3810-19 Aveiro, Portugal

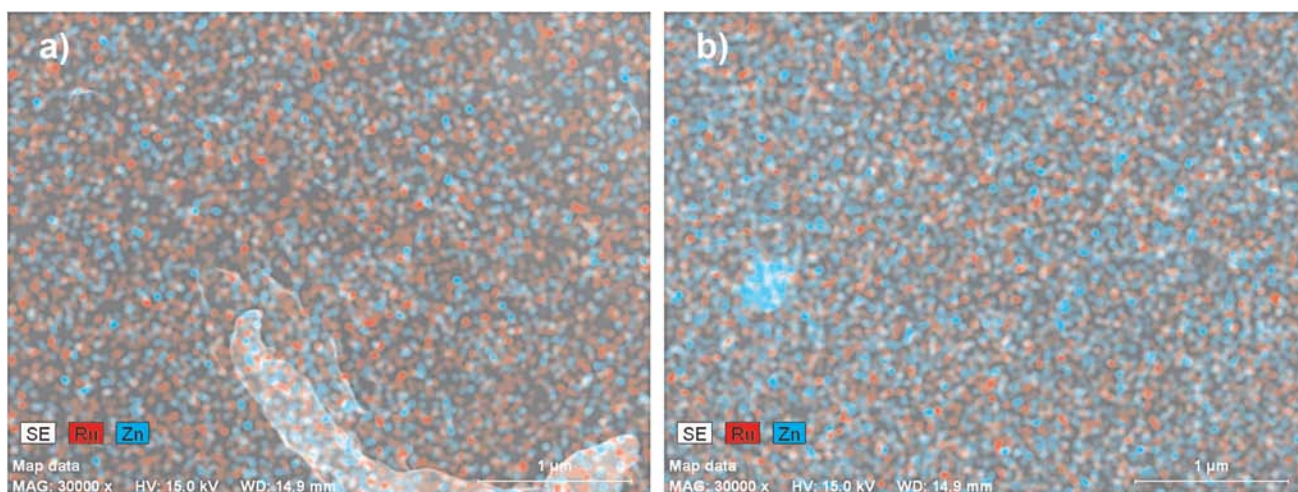


Figure S1. SEM images showing qualitative EDX mapping for ZnO/poly- $\{trans\text{-}[\text{RuCl}_2(\text{vpy})_4]\text{/sty}\}$ nanocomposites prepared by *ex situ* (a) and *in situ* (b) methods.

*e-mail: ksegala@uol.com.br, karen@ua.pt