

## Cytotoxic Lipidic $\alpha$ -amino Acids from the Zoanthid *Protospalythoa variabilis* from the Northeastern Coast of Brazil

Diego Veras Wilke,<sup>a</sup> Paula Christine Jimenez,<sup>a</sup> Claudia Pessoa,<sup>a</sup> Manoel Odorico de Moraes,<sup>a</sup> Renata Mendonça Araújo,<sup>b</sup> Wildson Max Barbosa da Silva,<sup>b</sup> Edilberto Rocha Silveira,<sup>b</sup> Otília Deusdênia Loiola Pessoa,<sup>b</sup> Raimundo Braz-Filho,<sup>b</sup> Norberto Peporine Lopes<sup>c</sup> and Leticia Veras Costa-Lotuf<sup>\*,a</sup>

<sup>a</sup>Departamento de Fisiologia e Farmacologia, Faculdade de Medicina, Universidade Federal do Ceará, 60430-270 Fortaleza-CE, Brazil

<sup>b</sup>Departamento de Química Orgânica e Inorgânica, Universidade Federal do Ceará, 60021-940 Fortaleza-CE, Brazil

<sup>c</sup>Departamento de Física e Química, Faculdade de Ciências Farmacêuticas de Ribeirão Preto, Universidade de São Paulo, 14040-903 Ribeirão Preto-SP, Brazil

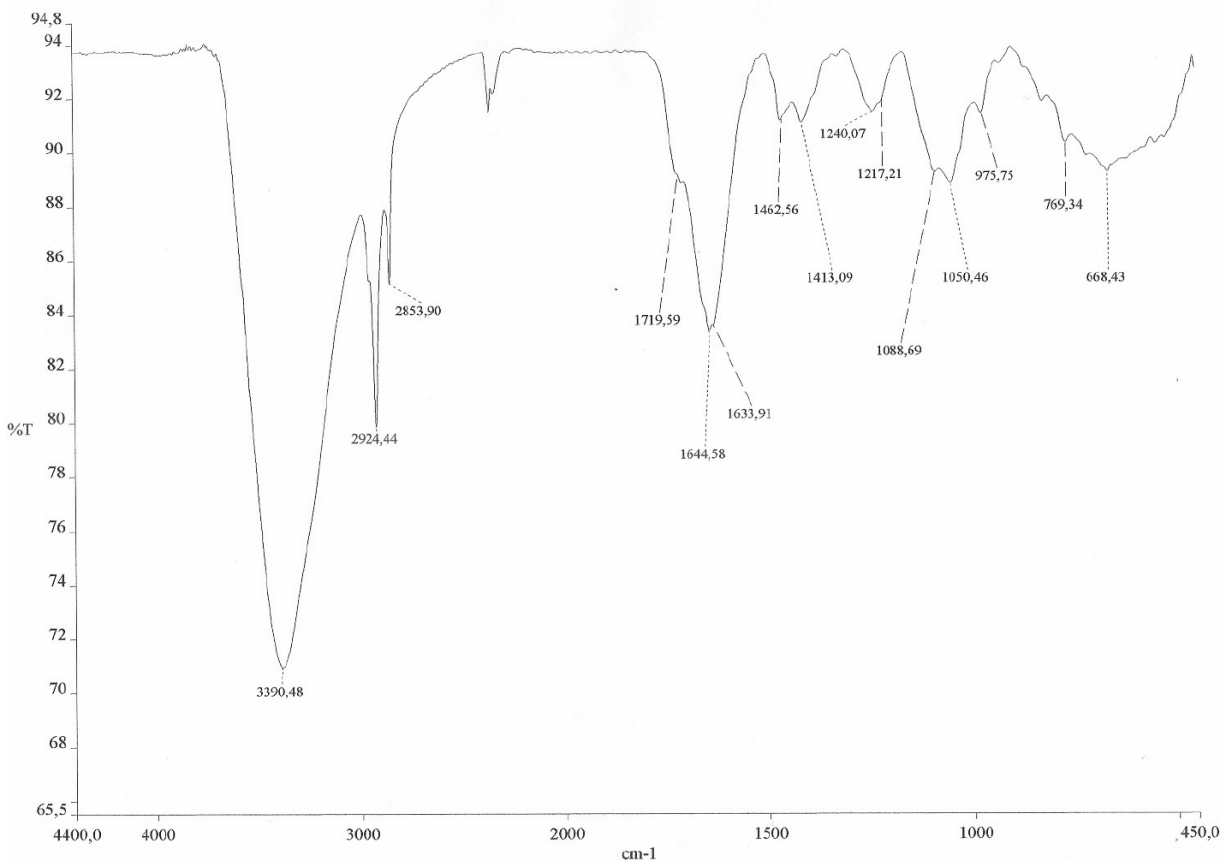


Figure S1. IR spectrum of mixture of two lipidic  $\alpha$ -amino acids (**1a** and **1b**)

\*e-mail: lvcosta@secrel.com.br; lvcosta@ufc.br

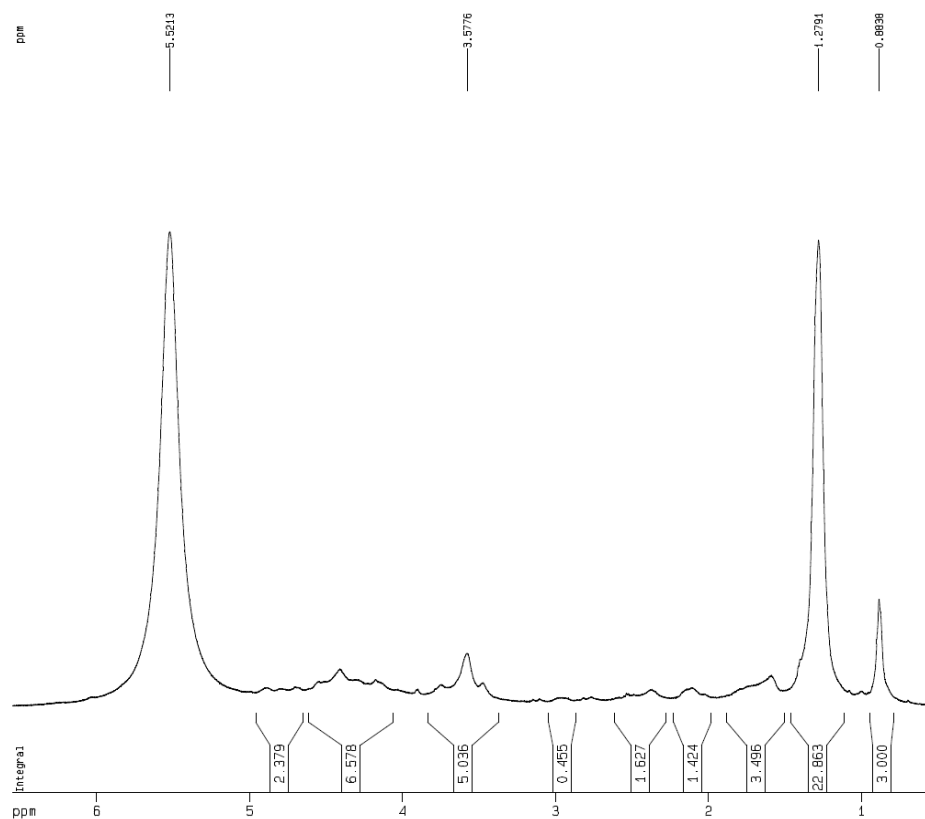


Figure S2. <sup>1</sup>H NMR spectrum (500 MHz, C<sub>5</sub>D<sub>5</sub>N) of a mixture of two lipidic  $\alpha$ -amino acids (**1a** and **1b**)

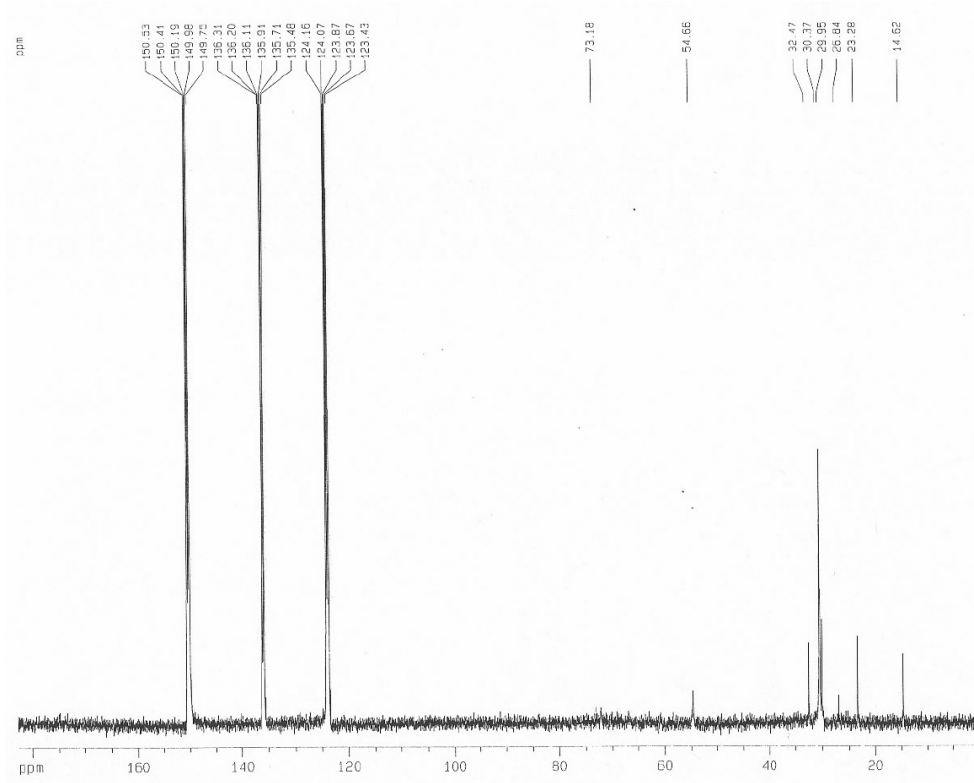
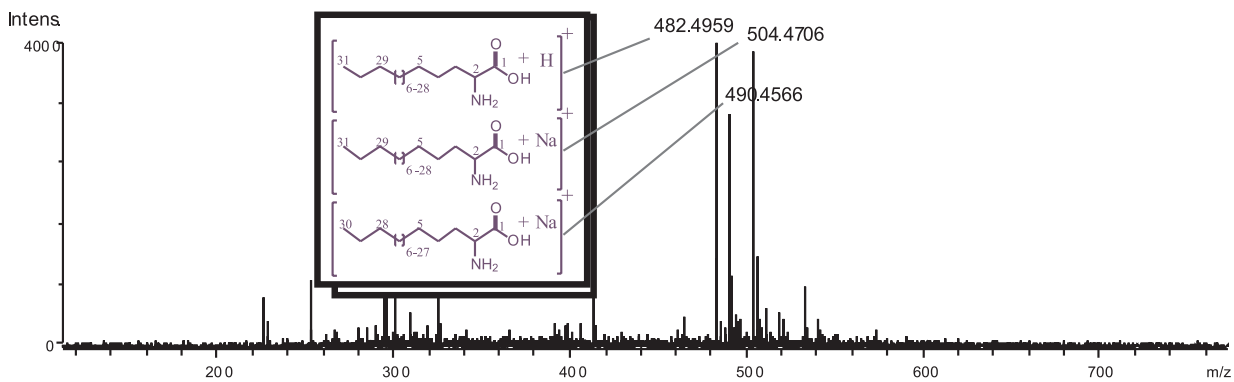
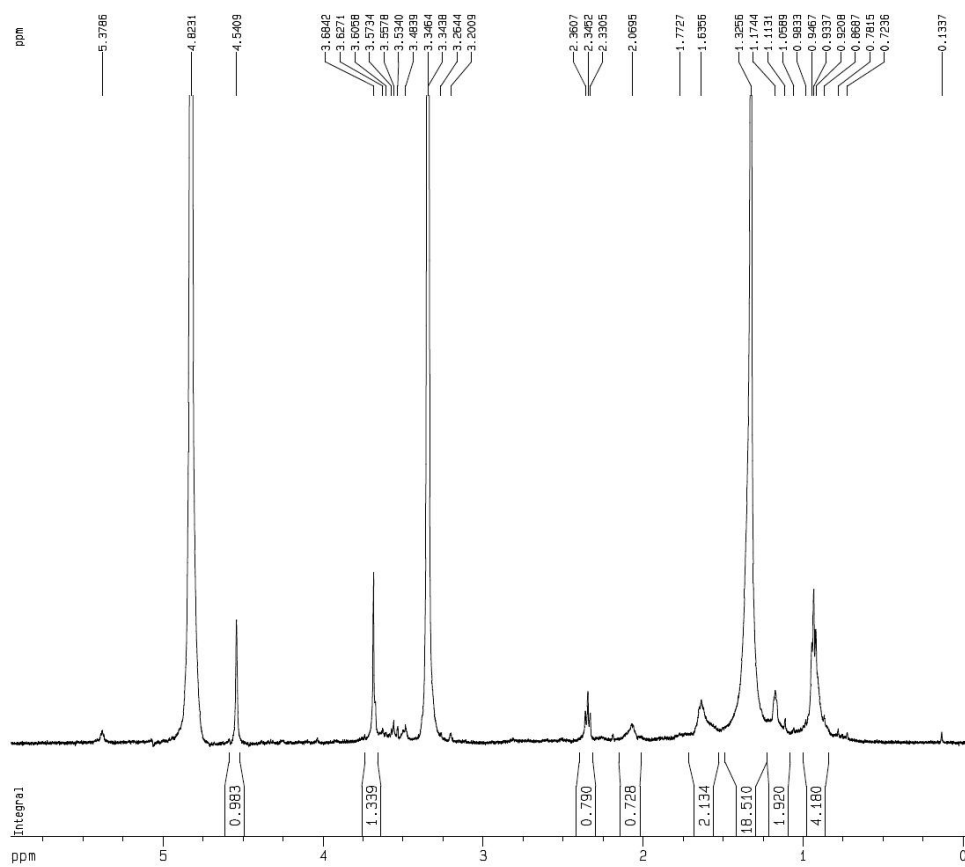


Figure S3. <sup>13</sup>C NMR spectrum (125 MHz, C<sub>5</sub>D<sub>5</sub>N) of a mixture of two lipidic  $\alpha$ -amino acids (**1a** and **1b**)



**Figure S4.** HRESI-MS spectrum of a mixture of two lipidic  $\alpha$ -amino acids (**1a** and **1b**). The major ions: **1a**  $m/z$  490.4566  $[M+Na]^+$  (calc. for  $C_{30}H_{61}NO_2Na$ , 490.4599); **1b**  $m/z$  482.4959  $[M+H]^+$  (calc. for  $C_{31}H_{64}NO_2$ , 482.4936); **1b**  $m/z$  504.4706  $[M+Na]^+$  (calc. for  $C_{31}H_{64}NO_2Na$ , 504.4756).



**Figure S5.**  $^1H$  NMR spectrum (500 MHz, MeOD) of a methyl ester mixture (**1a/1b**)

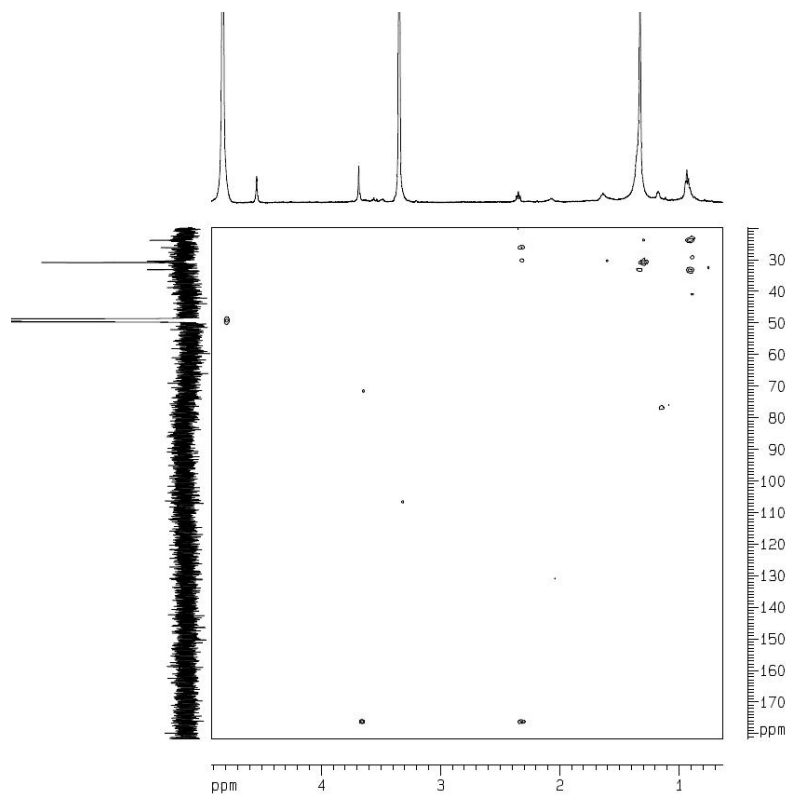


Figure S6. HMBC spectrum (500 MHz, MeOD) of methyl ester derivatives (**1a'**/**1b'**)

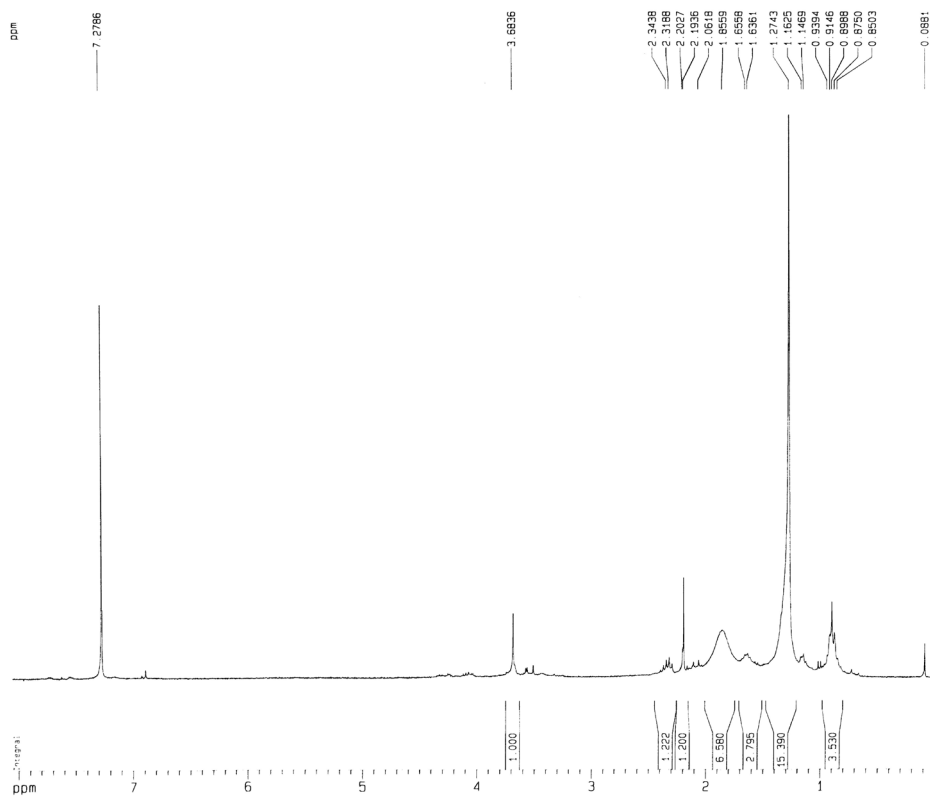


Figure S7.  $^1\text{H}$  NMR spectrum (500 MHz,  $\text{CDCl}_3$ ) of N-acetyl methyl ester derivatives (**1a''**/**1b''**)