

Analysis of the Chemical Composition of the Essential Oils Extracted from *Lippia lacunosa* Mart. & Schauer and *Lippia rotundifolia* Cham. (Verbenaceae) by Gas Chromatography and Gas Chromatography-Mass Spectrometry

Suzana G. Leitão,^{*a} Danilo R. de Oliveira,^b Valeria Sülsen,^c Virginia Martino,^c Ymira Galico Barbosa,^a Humberto R. Bizzo,^d Daíse Lopes,^d Lyderson F. Viccini,^e Fatima R. G. Salimena,^e Paulo H. P. Peixoto^e and Gilda G. Leitão^b

^aFaculdade de Farmácia, Universidade Federal do Rio de Janeiro, Bloco A, Ilha do Fundão, 21941-590 Rio de Janeiro-RJ, Brazil

^bNúcleo de Pesquisas de Produtos Naturais, Universidade Federal do Rio de Janeiro, Bloco H, Rio de Janeiro-RJ, Brazil

^cFacultad de Farmacia y Bioquímica, Universidad de Buenos Aires, Junín 956 (1113) Buenos Aires, Argentina

^dEmbrapa Agroindústria de Alimentos, Avenida das Américas 29501, 23020-470 Rio de Janeiro-RJ, Brazil

^eInstituto de Ciências Biológicas, Universidade Federal de Juiz de Fora, Juiz de Fora-MG, Brazil

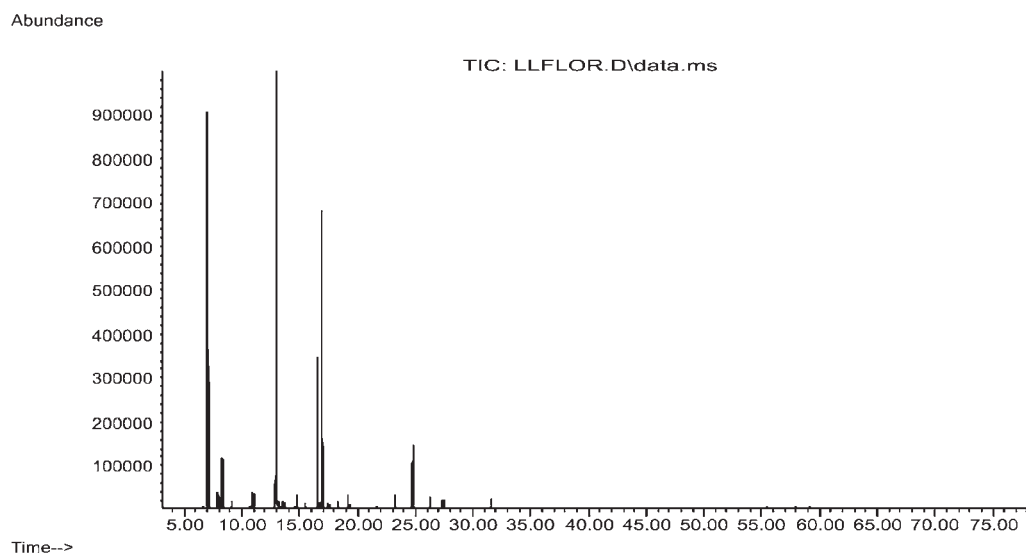


Figure S1. Gas Chromatogram (GC-MS) of the essential oil of *Lippia lacunosa* flowers.

*e-mail: sgleitao@pharma.ufrj.br

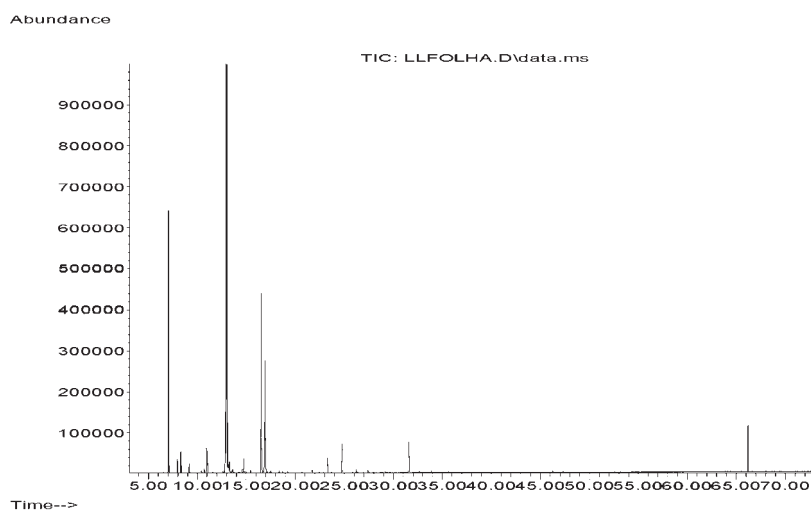


Figure S2. Gas Chromatogram (GC-MS) of the essential oil of *Lippia lacunosa* leaves.

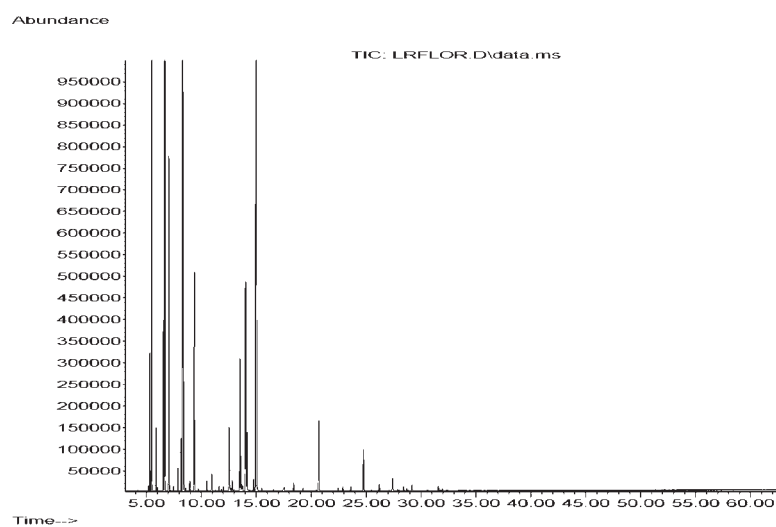


Figure S3. Gas Chromatogram (GC-MS) of the essential oil of *Lippia rotundifolia* flowers.

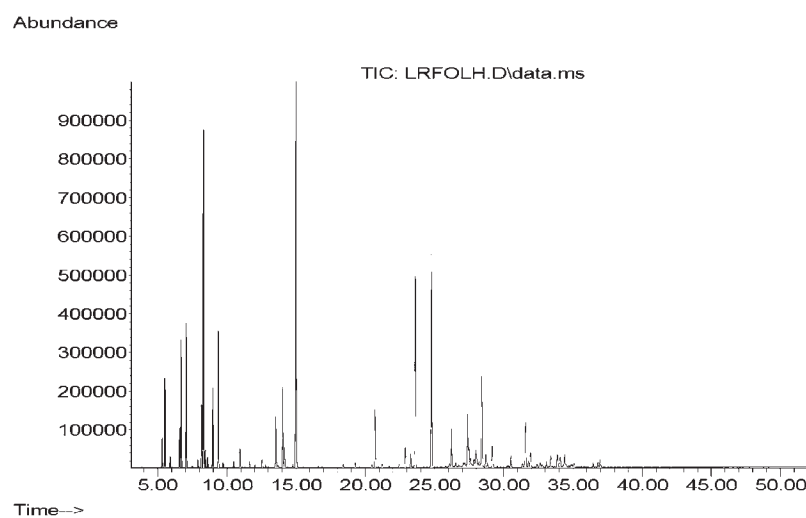
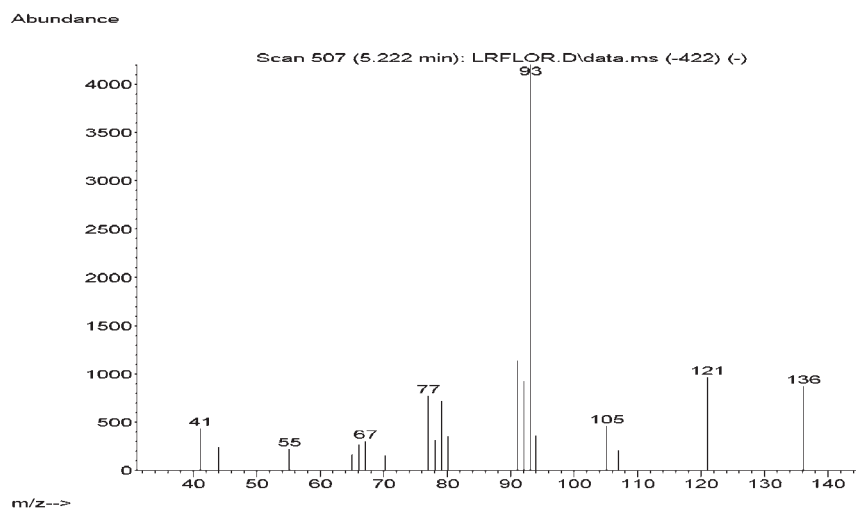
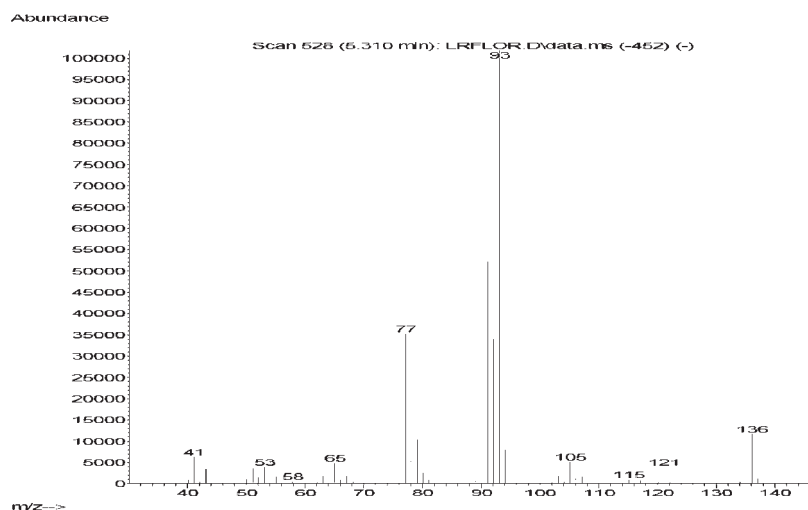
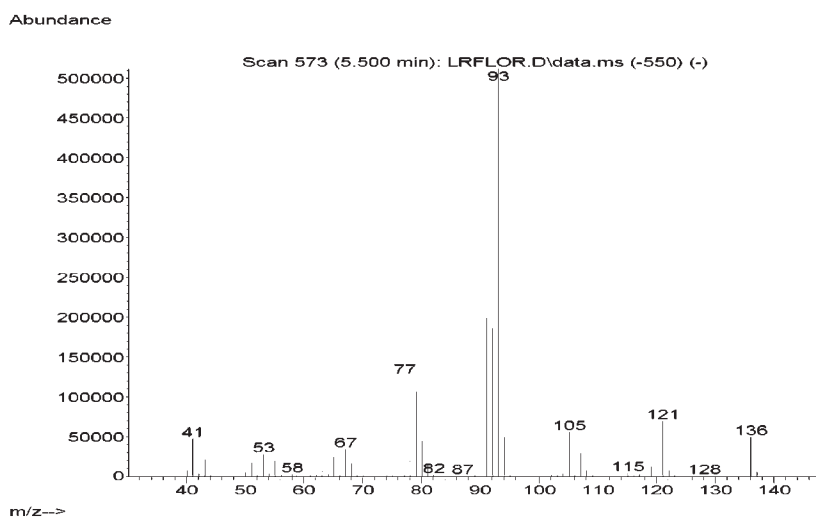


Figure S4. Gas Chromatogram (GC-MS) of the essential oil of *Lippia rotundifolia* leaves.

Mass Spectra of Compounds in *Lippia lacunosa* and *Lippia rotundifolia* Essential Oils**Figure S5.** Mass spectra of tricyclene in *Lippia lacunosa* and *Lippia rotundifolia* essential oils.**Figure S6.** Mass spectra of alpha-thujene in *Lippia lacunosa* and *Lippia rotundifolia* essential oils.**Figure S7.** Mass spectra of alpha-pinene in *Lippia lacunosa* and *Lippia rotundifolia* essential oils.

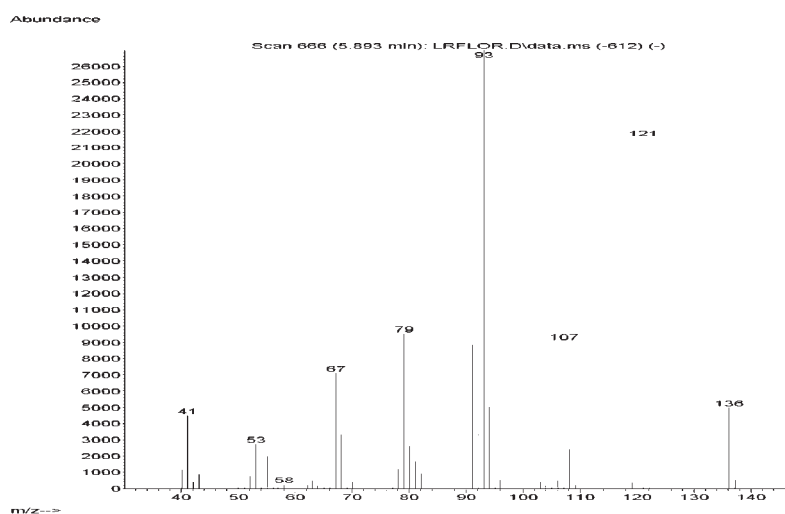


Figure S8. Mass spectra of camphene in *Lippia lacunosa* and *Lippia rotundifolia* essential oils.

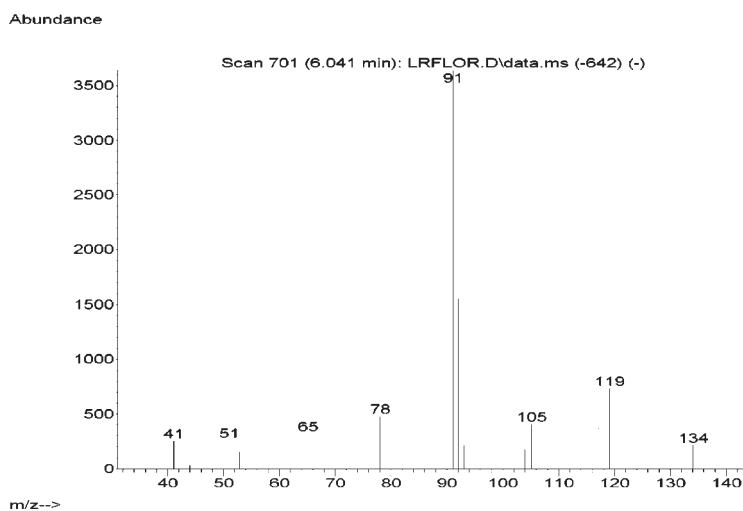


Figure S9. Mass spectra of thuja-2,4-(10)-diene in *Lippia lacunosa* and *Lippia rotundifolia* essential oils.

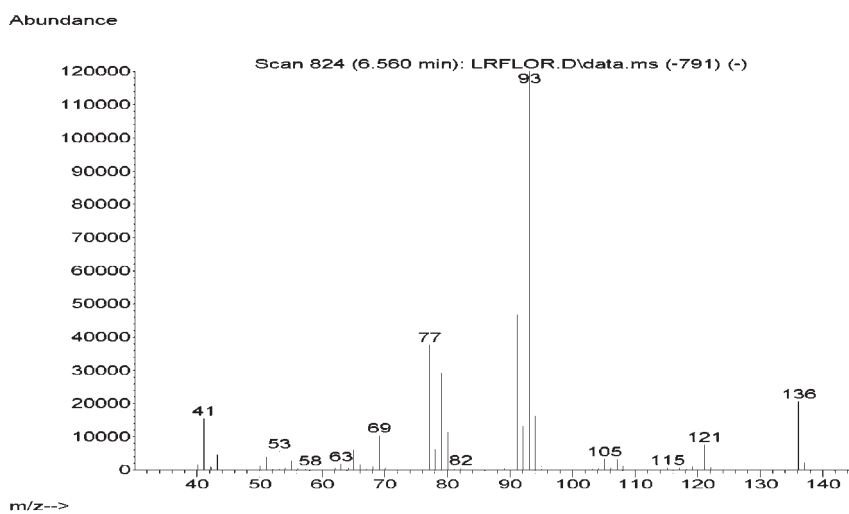


Figure S10. Mass spectra of sabinene in *Lippia lacunosa* and *Lippia rotundifolia* essential oils.

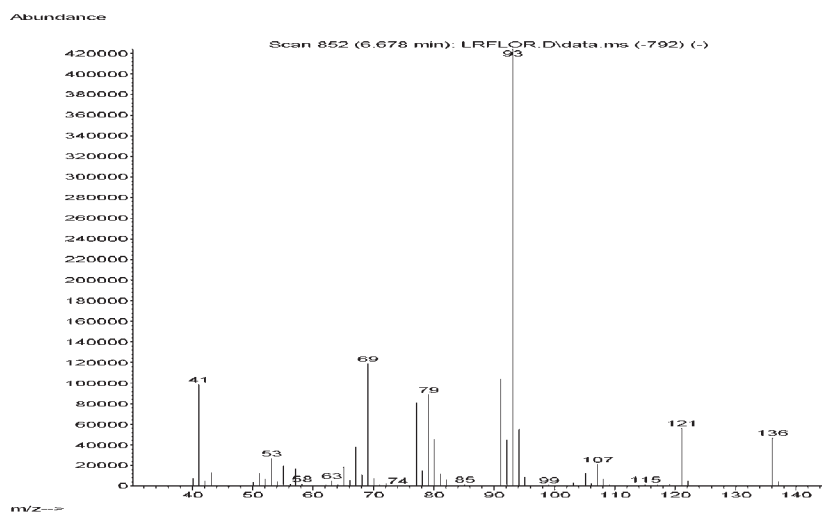


Figure S11. Mass spectra of beta-pinene in *Lippia lacunosa* and *Lippia rotundifolia* essential oils.

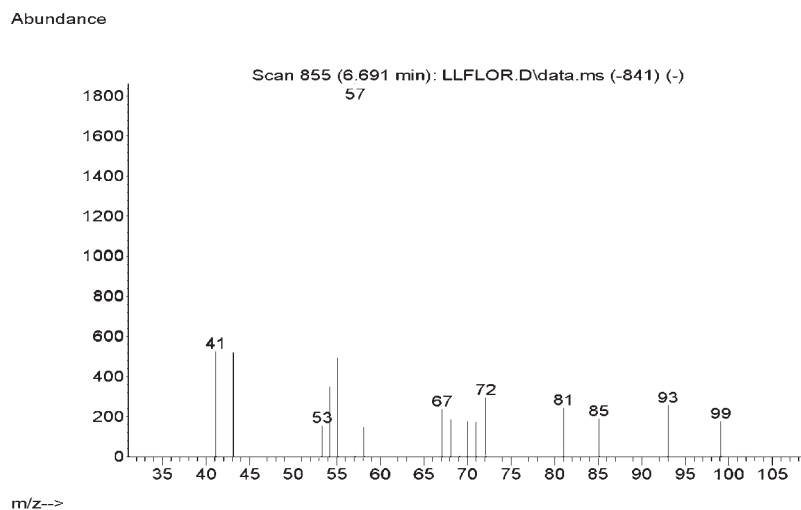


Figure S12. Mass spectra of 1-octen-3-ol in *Lippia lacunosa* and *Lippia rotundifolia* essential oils.

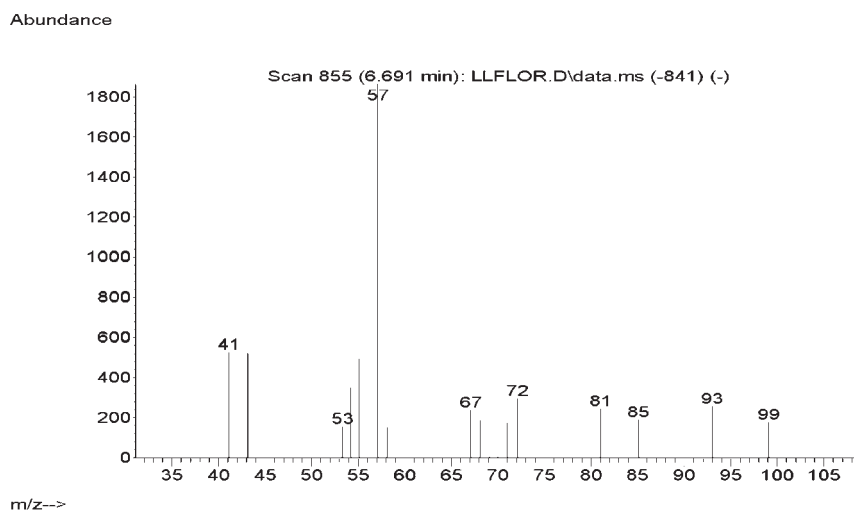


Figure S13. Mass spectra of myrcene in *Lippia lacunosa* and *Lippia rotundifolia* essential oils.

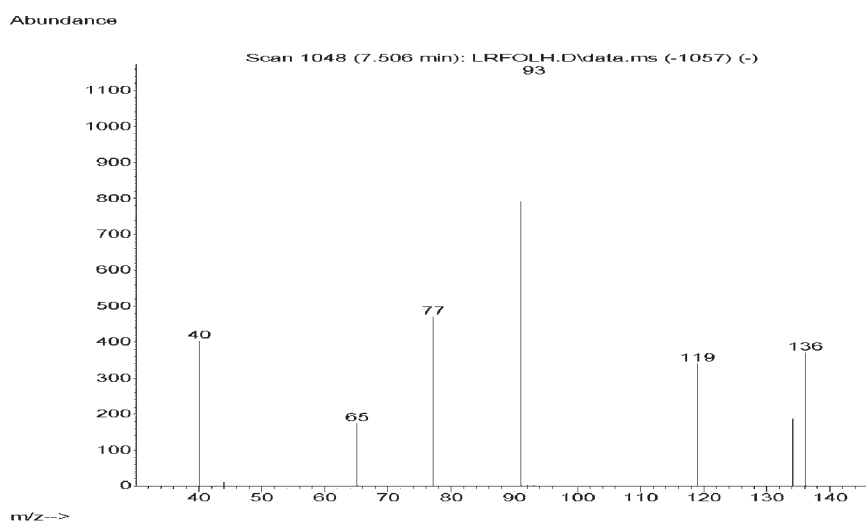


Figure S14. Mass spectra of alpha-phellandrene in *Lippia lacunosa* and *Lippia rotundifolia* essential oils.

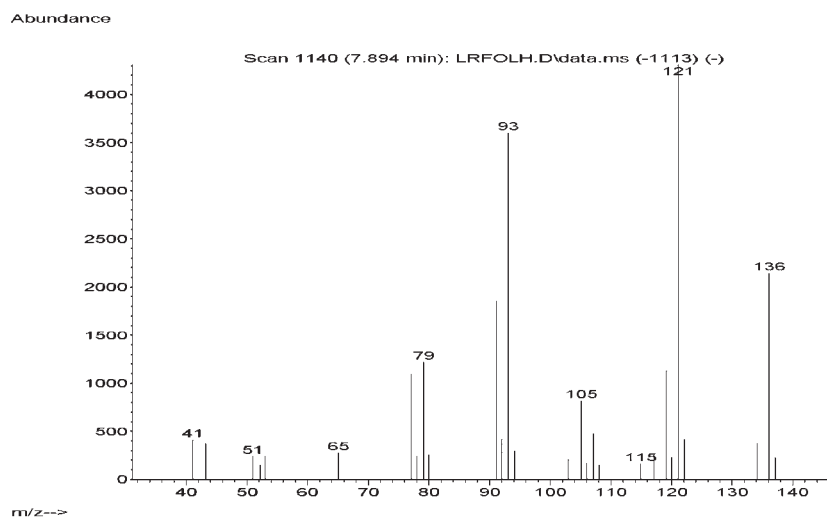


Figure S15. Mass spectra of alpha-terpinene in *Lippia lacunosa* and *Lippia rotundifolia* essential oils.

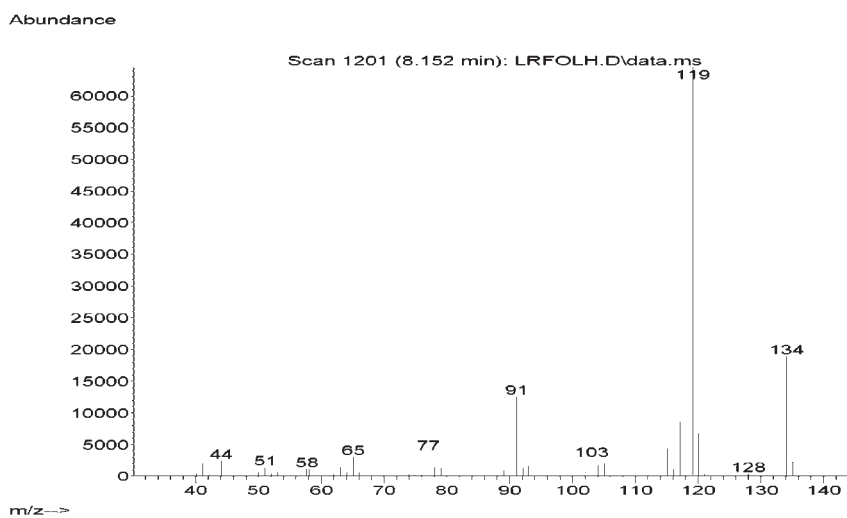


Figure S16. Mass spectra of para-cymene in *Lippia lacunosa* and *Lippia rotundifolia* essential oils.

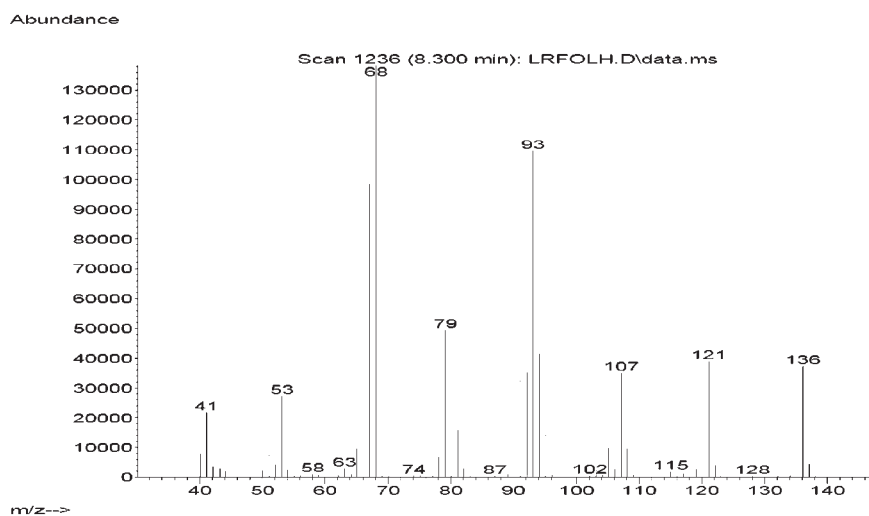


Figure S17. Mass spectra of limonene in *Lippia lacunosa* and *Lippia rotundifolia* essential oils.

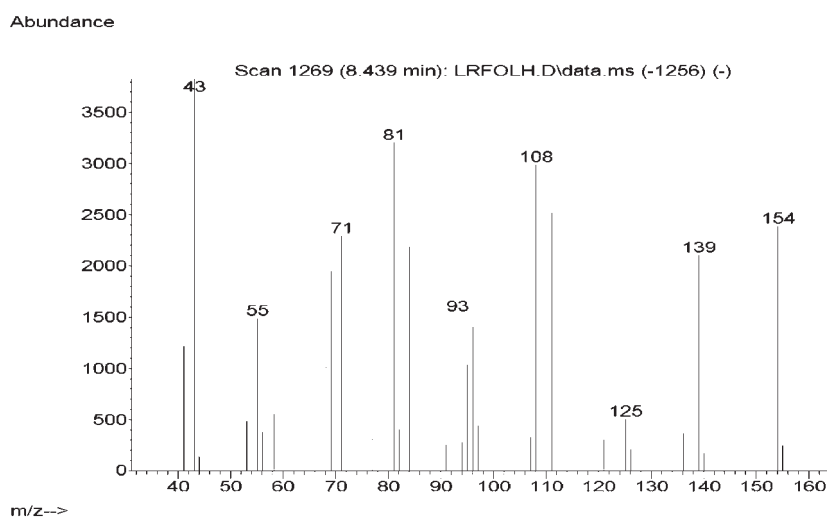


Figure S18. Mass spectra of 1,8-cineole in *Lippia lacunosa* and *Lippia rotundifolia* essential oils.

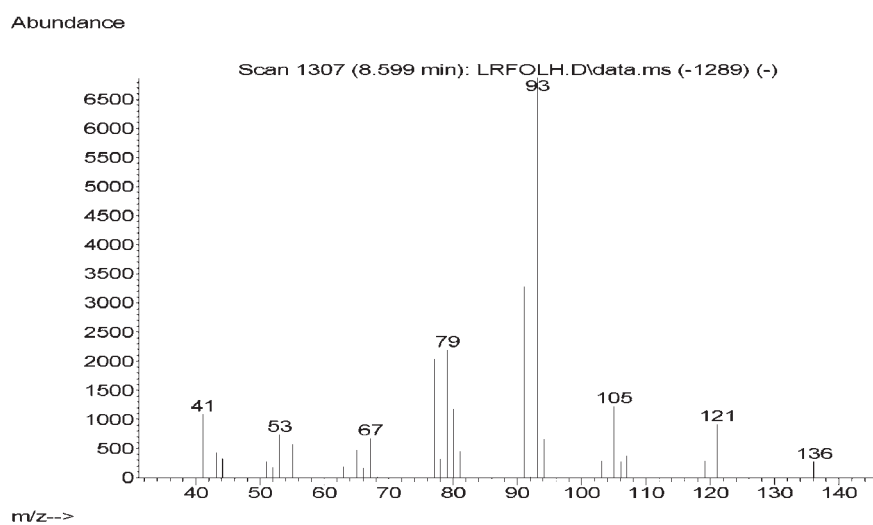


Figure S19. Mass spectra of (z)-beta-ocimene in *Lippia lacunosa* and *Lippia rotundifolia* essential oils.

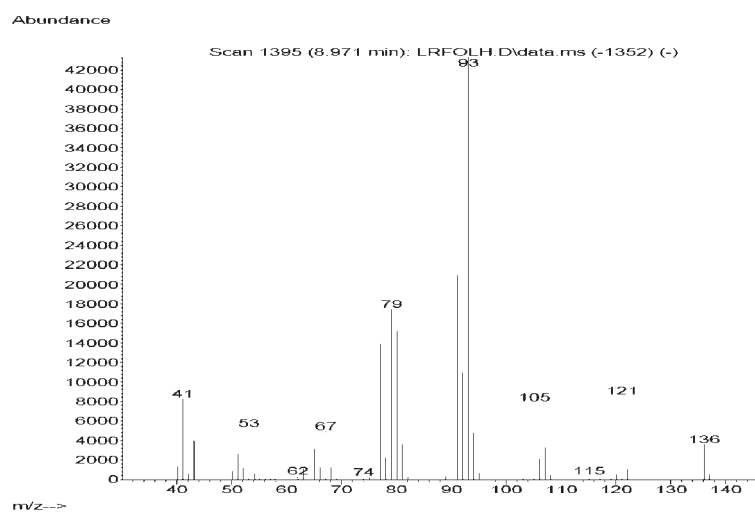


Figure S20. Mass spectra of (e)-beta-ocimene in *Lippia lacunosa* and *Lippia rotundifolia* essential oils.

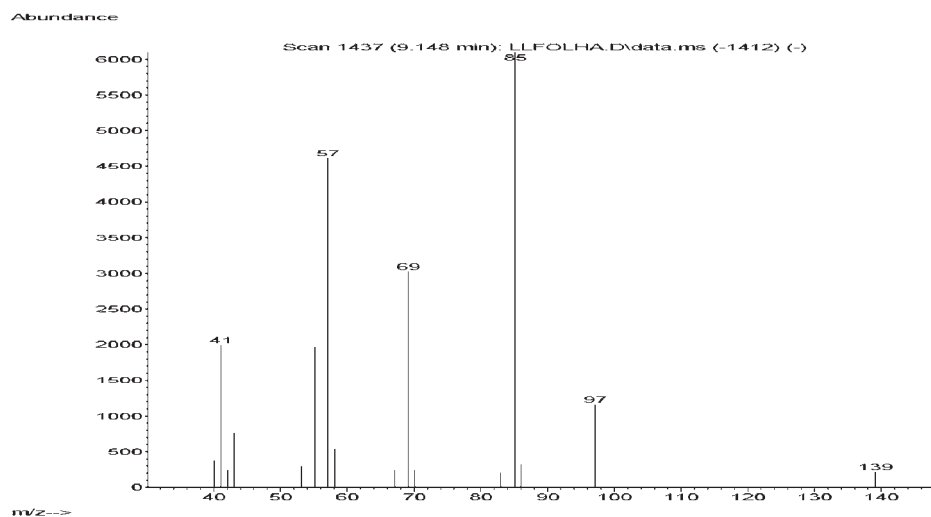


Figure S21. Mass spectra of dihydrotagetone in *Lippia lacunosa* and *Lippia rotundifolia* essential oils.

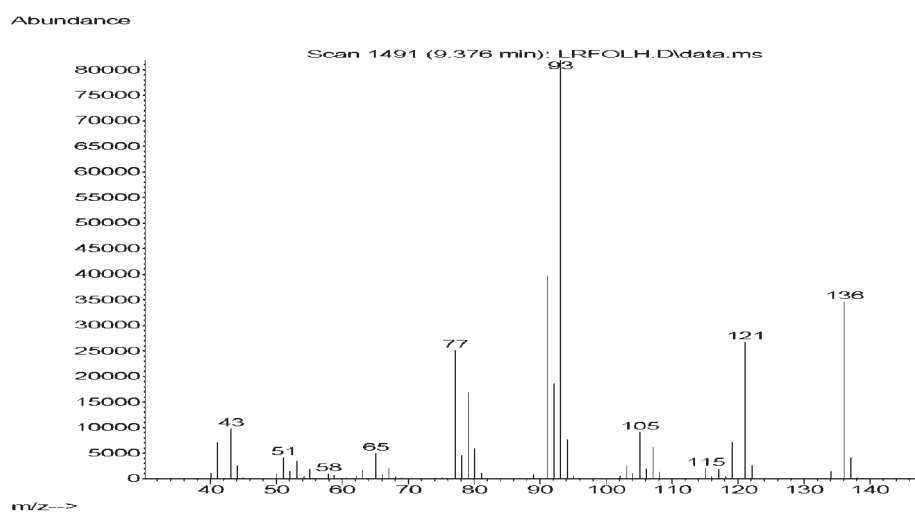


Figure S22. Mass spectra of gamma-terpinene in *Lippia lacunosa* and *Lippia rotundifolia* essential oils.

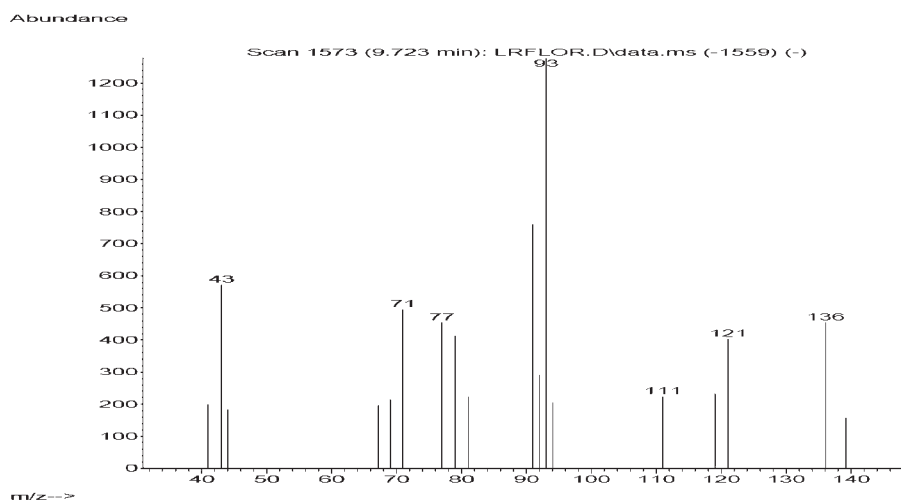


Figure S23. Mass spectra of cis-sabinene-hydrate in *Lippia lacunosa* and *Lippia rotundifolia* essential oils.

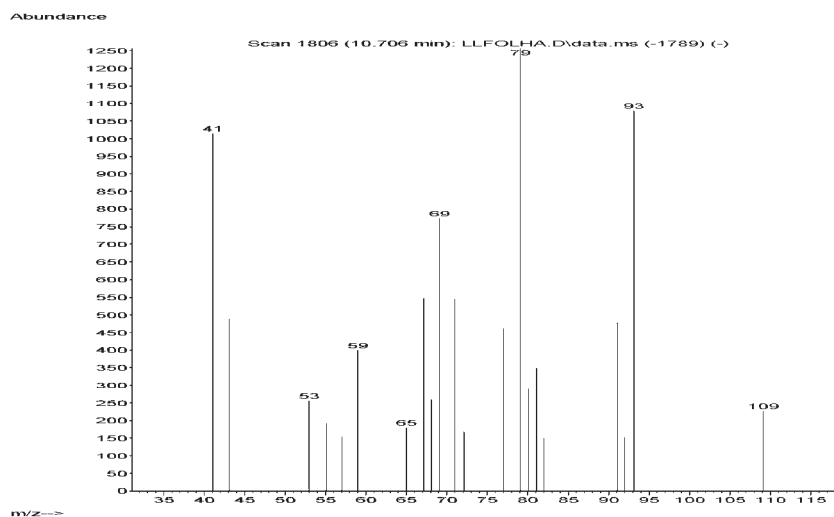


Figure S24. Mass spectra of not identified compound (IR=1088) in *Lippia lacunosa* and *Lippia rotundifolia* essential oils.

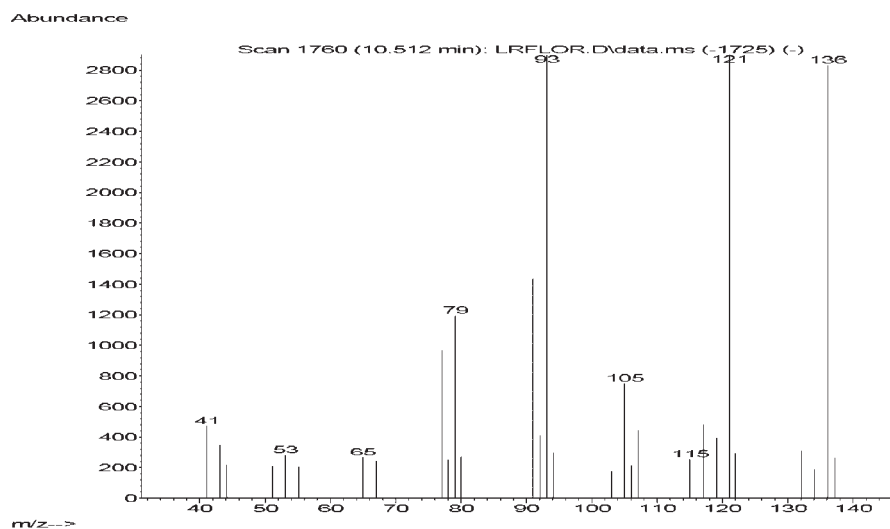


Figure S25. Mass spectra of terpinolene in *Lippia lacunosa* and *Lippia rotundifolia* essential oils.

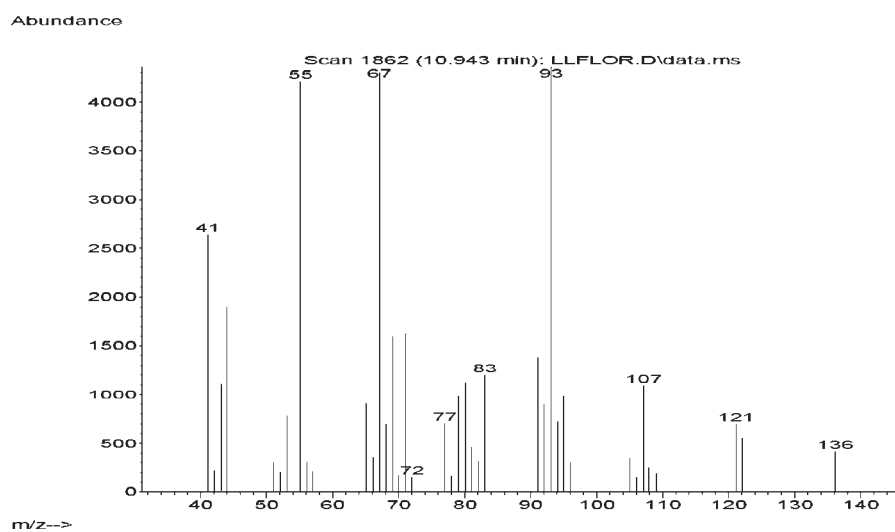


Figure S26. Mass spectra of not identified compound (IR=1101) in *Lippia lacunosa* and *Lippia rotundifolia* essential oils.

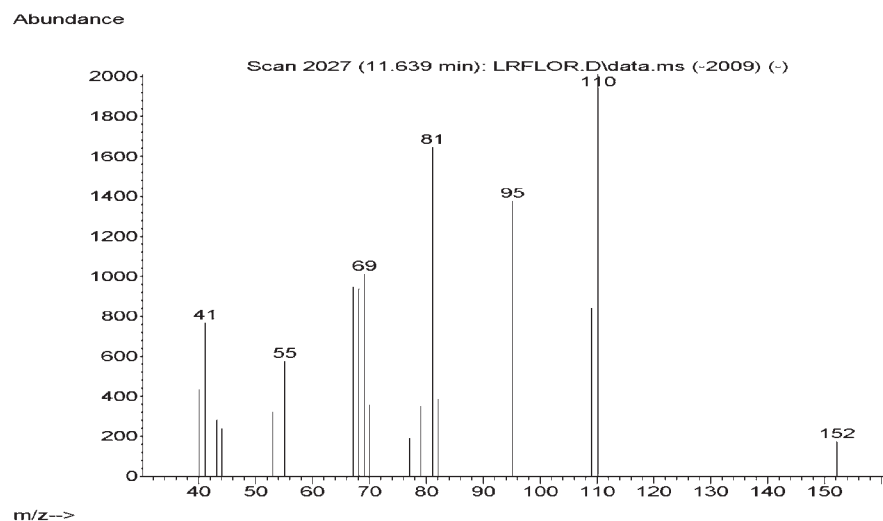


Figure S27. Mass spectra of trans-thujone in *Lippia lacunosa* and *Lippia rotundifolia* essential oils.

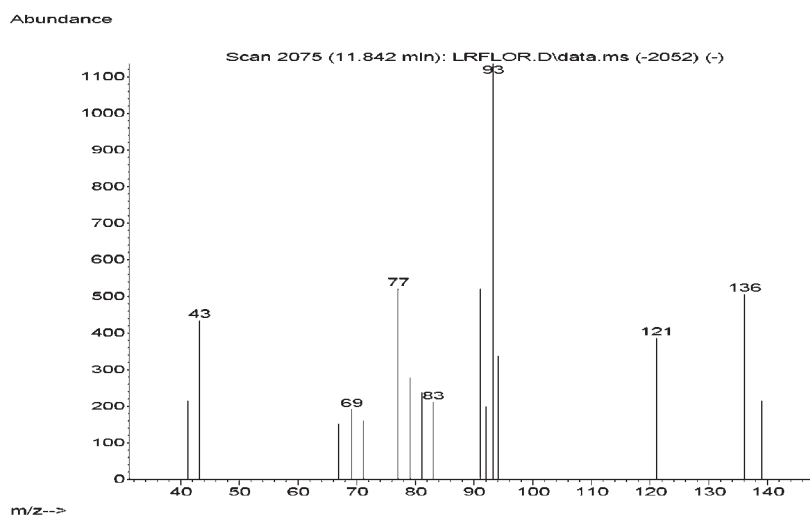


Figure S28. Mass spectra of not identified compound (IR=1125) in *Lippia lacunosa* and *Lippia rotundifolia* essential oils.

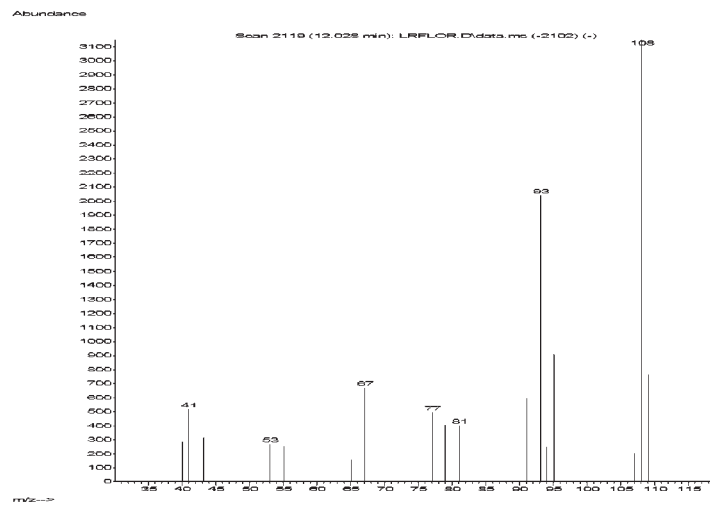


Figure S29. Mass spectra of alpha-campholenal in *Lippia lacunosa* and *Lippia rotundifolia* essential oils.

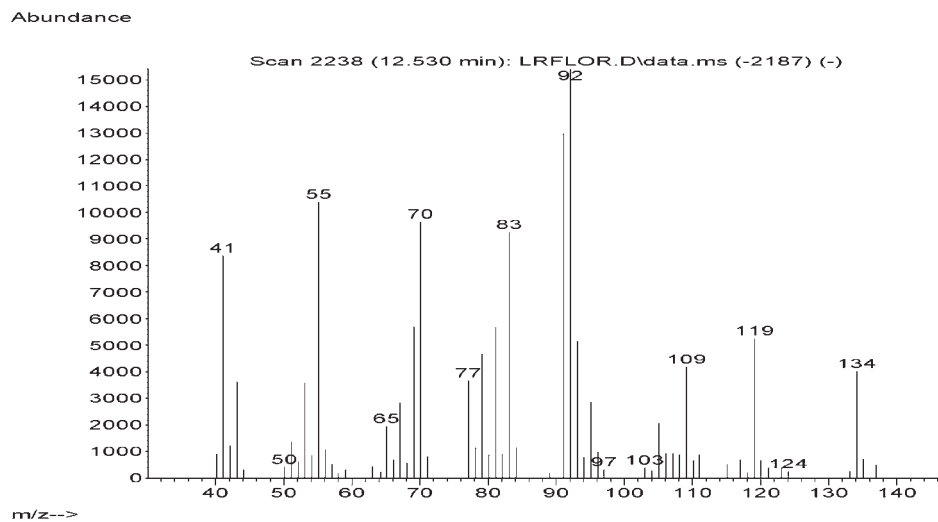


Figure S30. Mass spectra of trans-pinocarveol in *Lippia lacunosa* and *Lippia rotundifolia* essential oils.

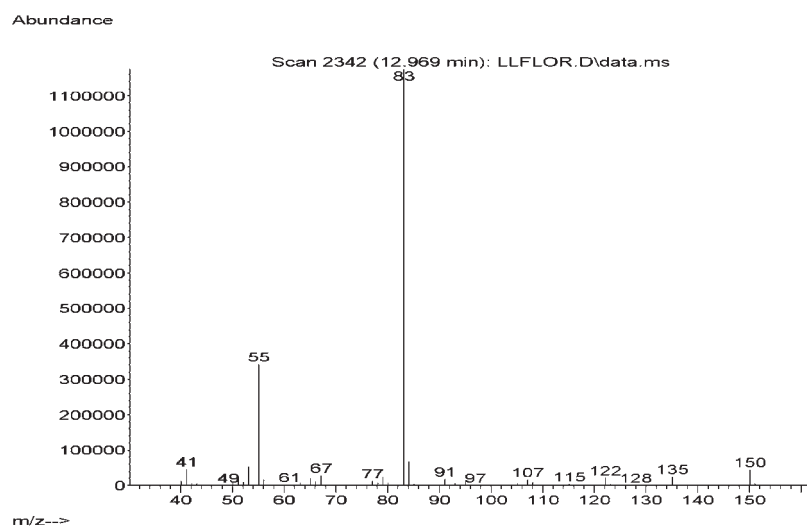


Figure S31. Mass spectra of myrcenone in *Lippia lacunosa* and *Lippia rotundifolia* essential oils.

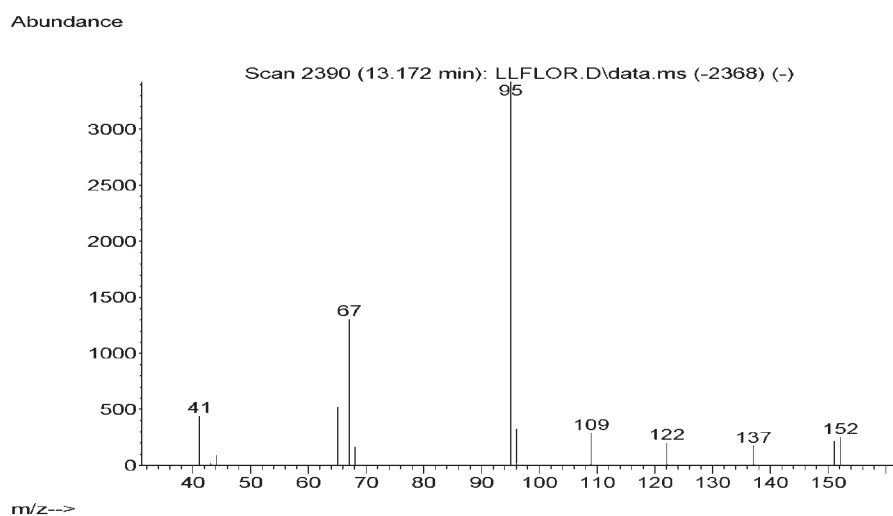


Figure S32. Mass spectra of cis-tagetone in *Lippia lacunosa* and *Lippia rotundifolia* essential oils.

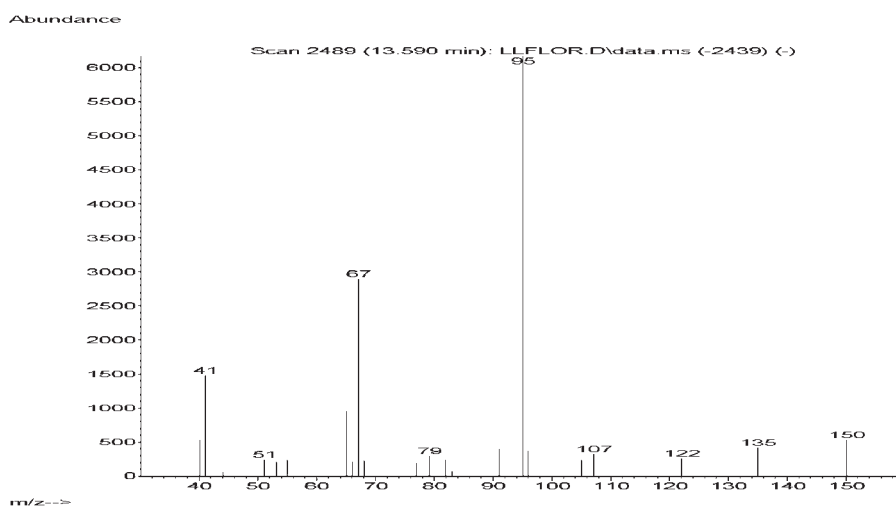


Figure S33. Mass spectra of not identified compound (IR=1167) in *Lippia lacunosa* and *Lippia rotundifolia* essential oils.

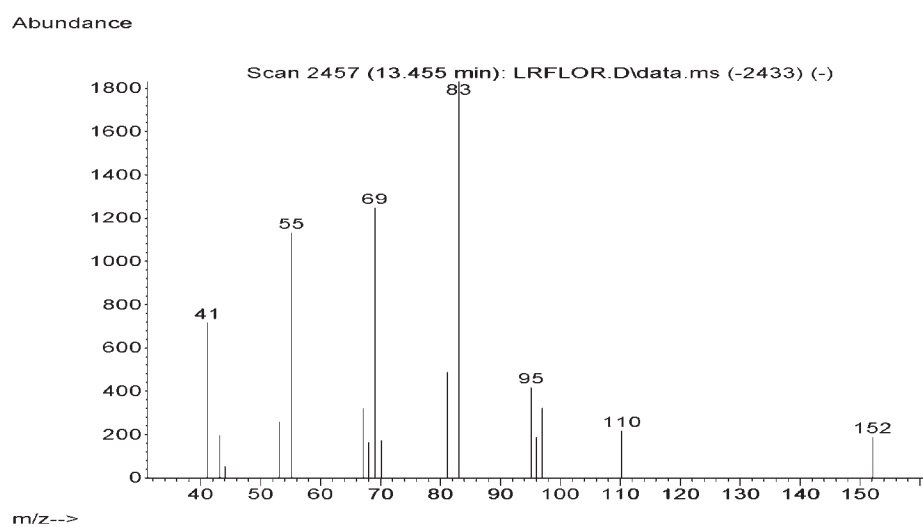


Figure S34. Mass spectra of trans-pinocamphone in *Lippia lacunosa* and *Lippia rotundifolia* essential oils.

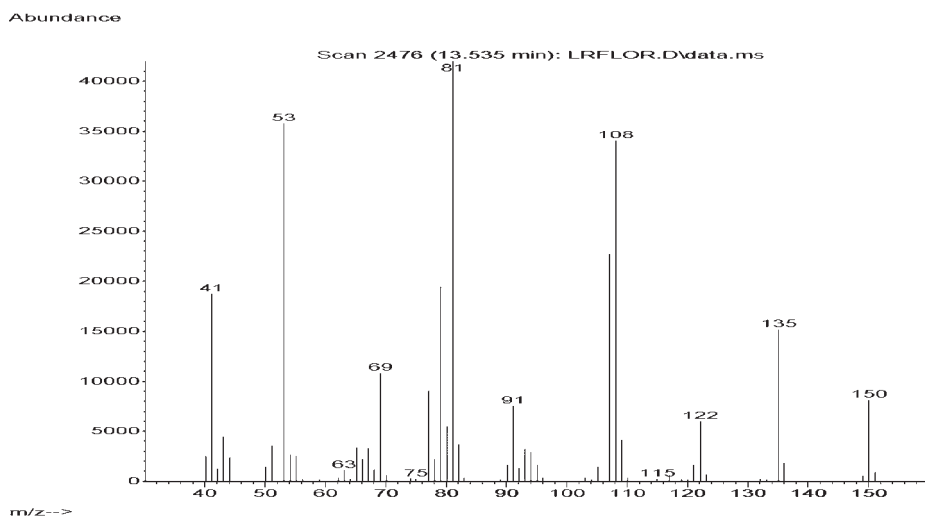


Figure S35. Mass spectra of pinocarvone in *Lippia lacunosa* and *Lippia rotundifolia* essential oils.

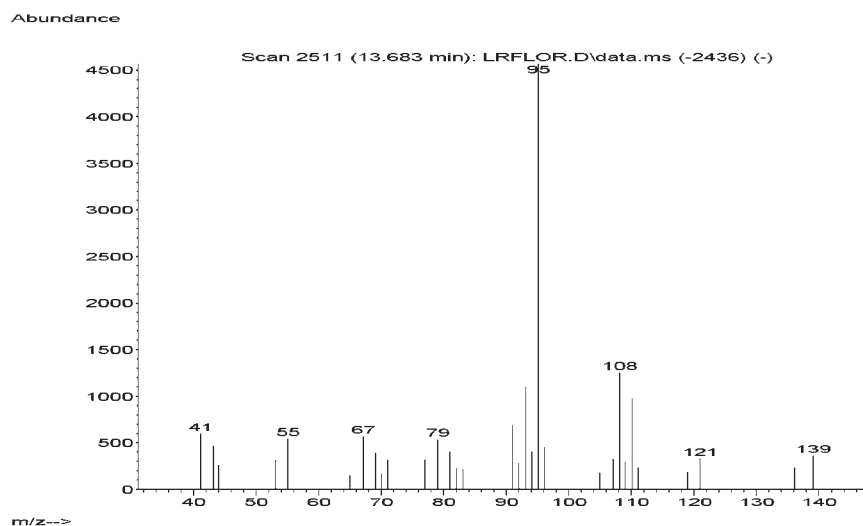


Figure S36. Mass spectra of borneol in *Lippia lacunosa* and *Lippia rotundifolia* essential oils.

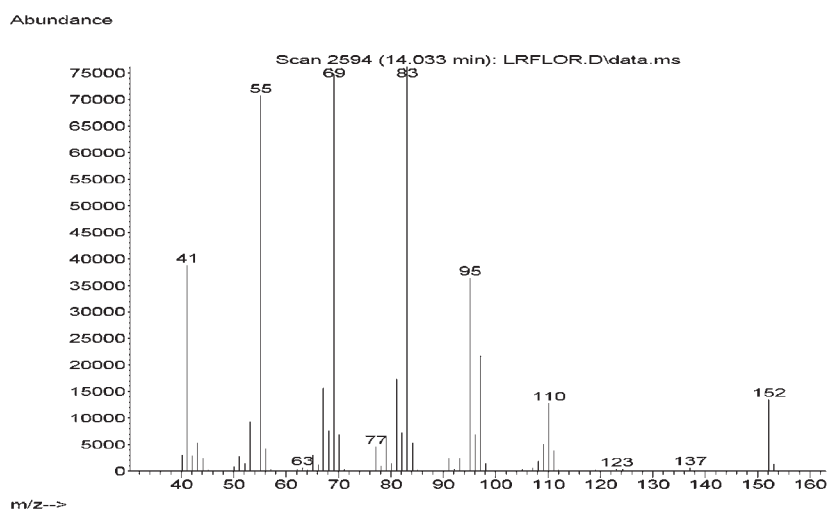


Figure S37. Mass spectra of cis-pinocamphone in *Lippia lacunosa* and *Lippia rotundifolia* essential oils.

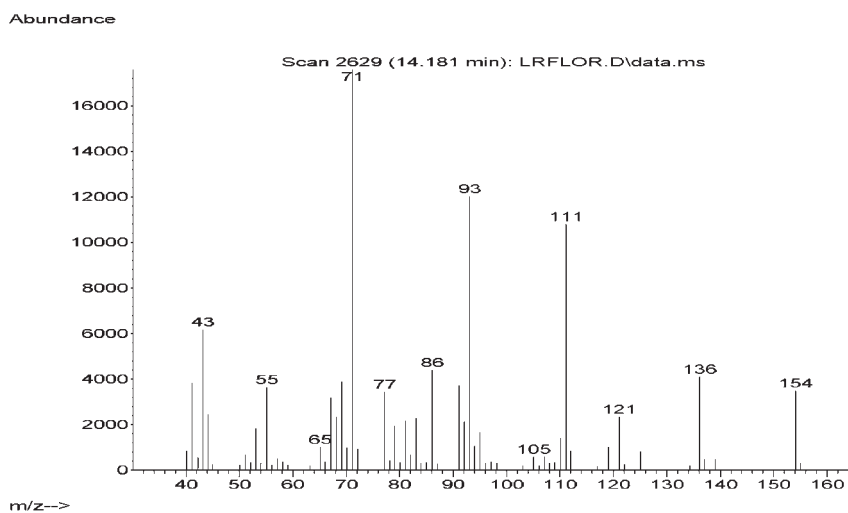


Figure S38. Mass spectra of terpinen-4-ol in *Lippia lacunosa* and *Lippia rotundifolia* essential oils.

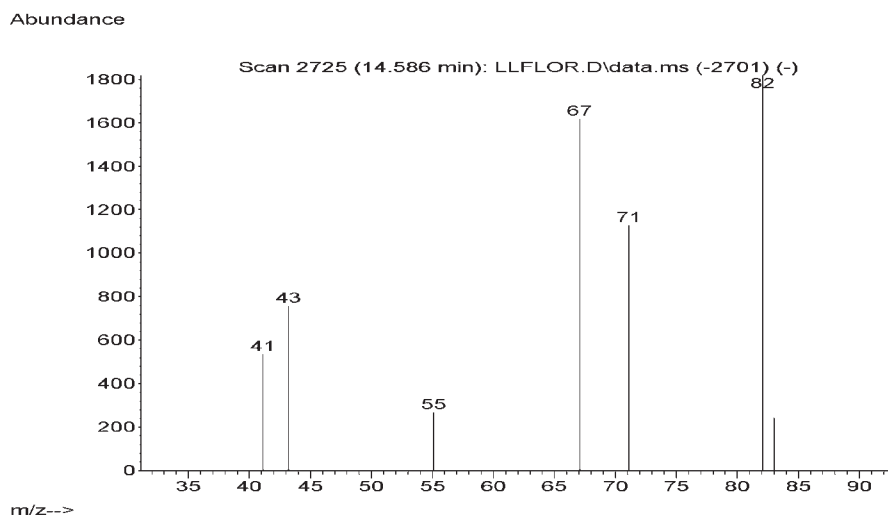


Figure S39. Mass spectra of not identified compound (IR=1189) in *Lippia lacunosa* and *Lippia rotundifolia* essential oils.

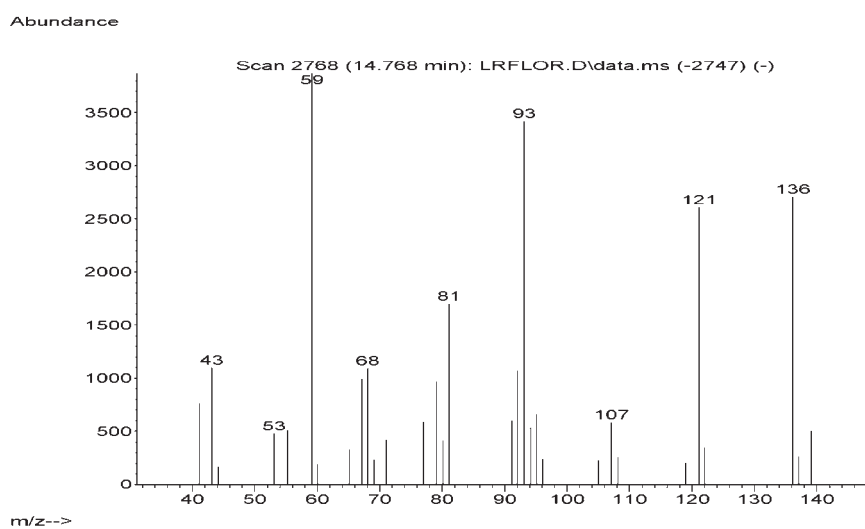


Figure S40. Mass spectra of alpha-terpineol in *Lippia lacunosa* and *Lippia rotundifolia* essential oils.

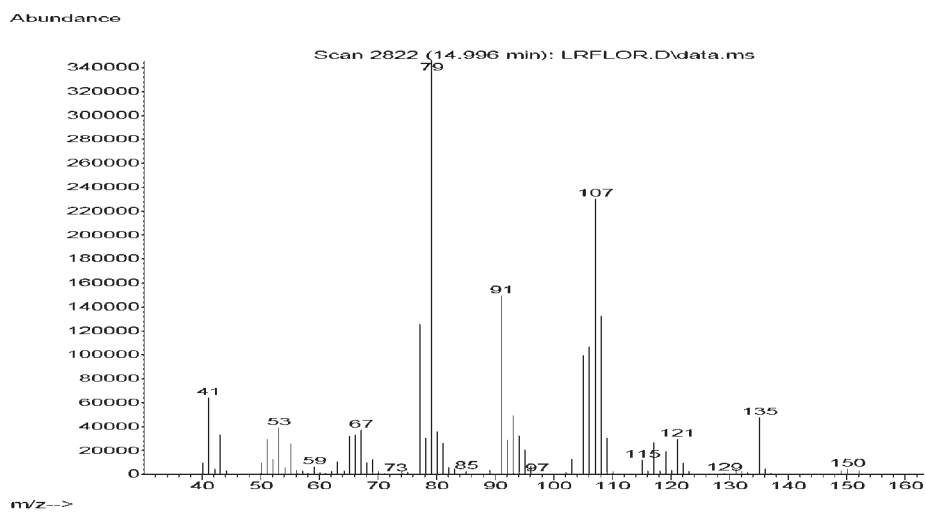


Figure S41. Mass spectra of myrtenal in *Lippia lacunosa* and *Lippia rotundifolia* essential oils.

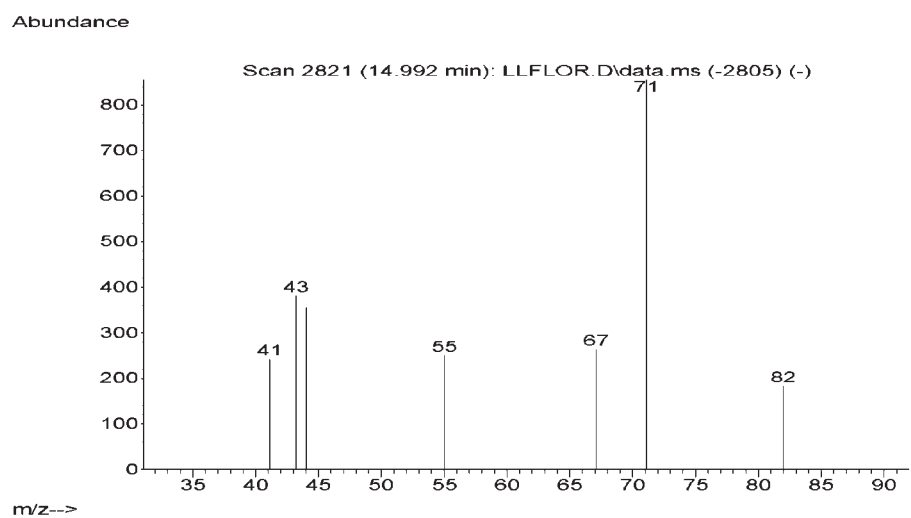


Figure S42. Mass spectra of not identified compound (IR=1197) in *Lippia lacunosa* and *Lippia rotundifolia* essential oils.

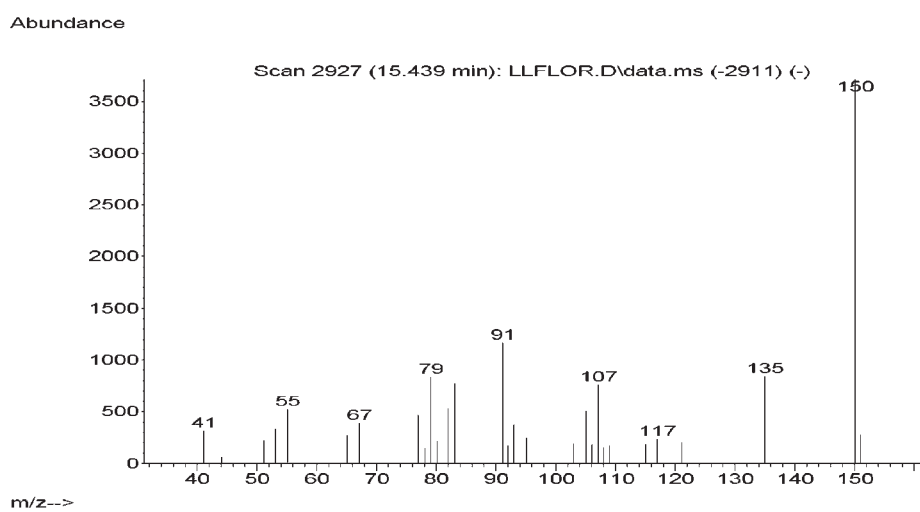


Figure S43. Mass spectra of not identified compound (IR=1208) in *Lippia lacunosa* and *Lippia rotundifolia* essential oils.

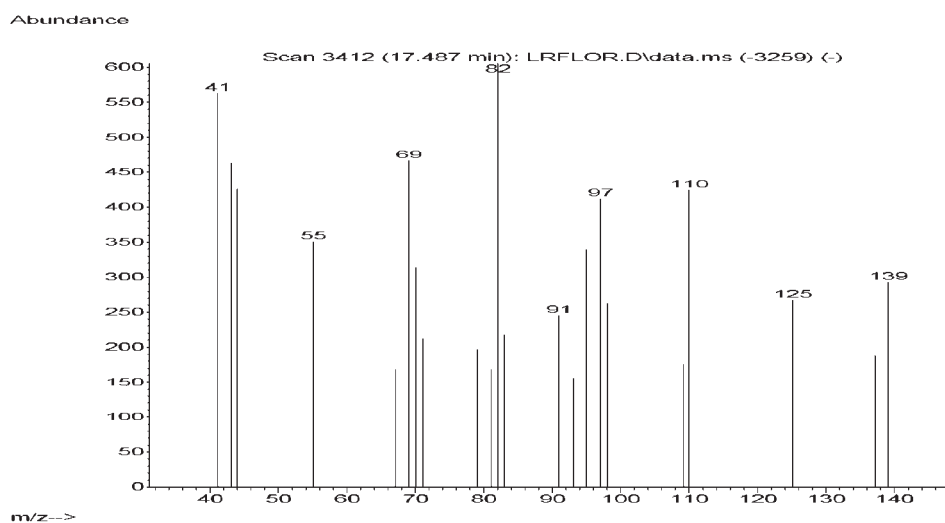


Figure S44. Mass spectra of not identified compound (IR=1256) in *Lippia lacunosa* and *Lippia rotundifolia* essential oils.

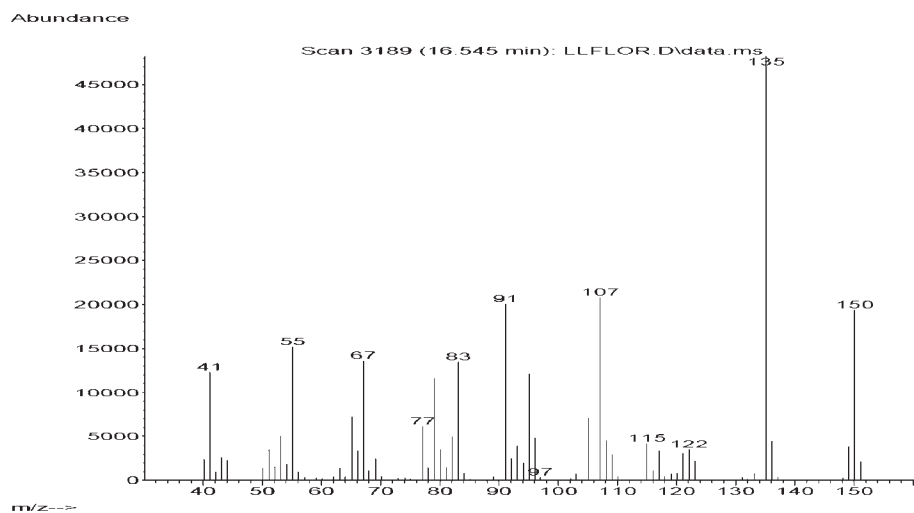


Figure S45. Mass spectra of (z)-ocimene in *Lippia lacunosa* and *Lippia rotundifolia* essential oils.

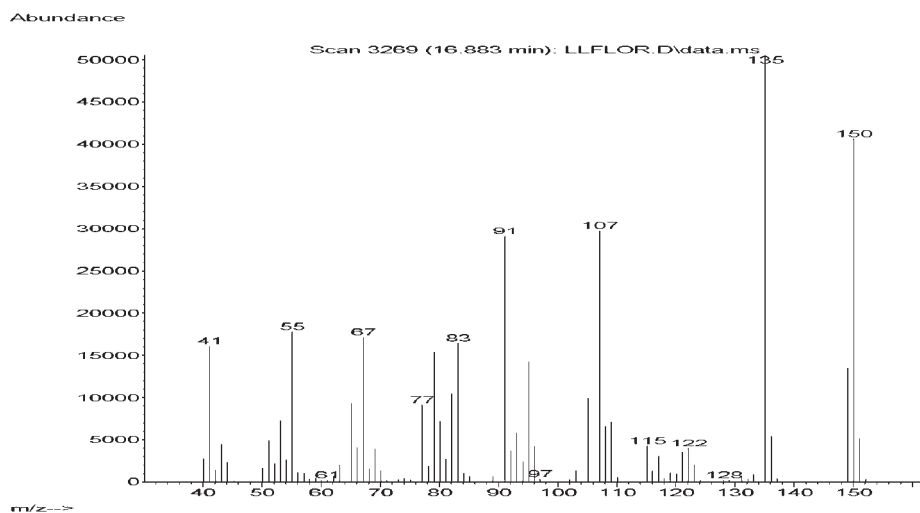


Figure S46. Mass spectra of (E)-ocimene in *Lippia lacunosa* and *Lippia rotundifolia* essential oils.

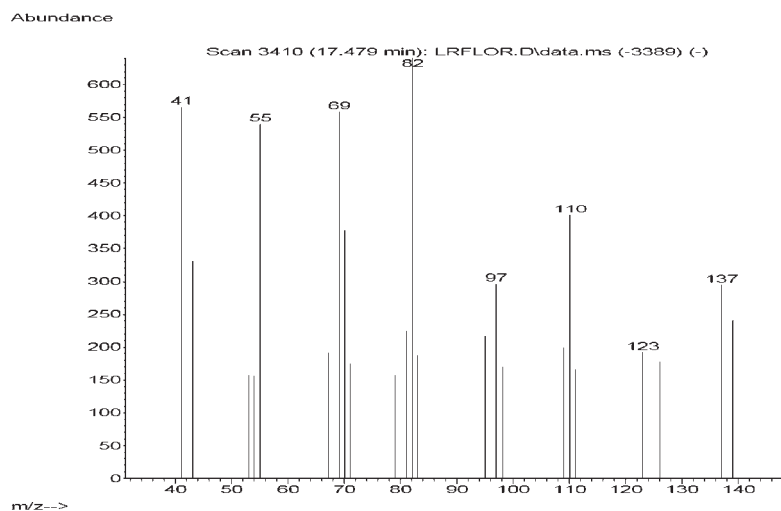


Figure S47. Mass spectra of not identified compound (IR=1256) in *Lippia lacunosa* and *Lippia rotundifolia* essential oils.

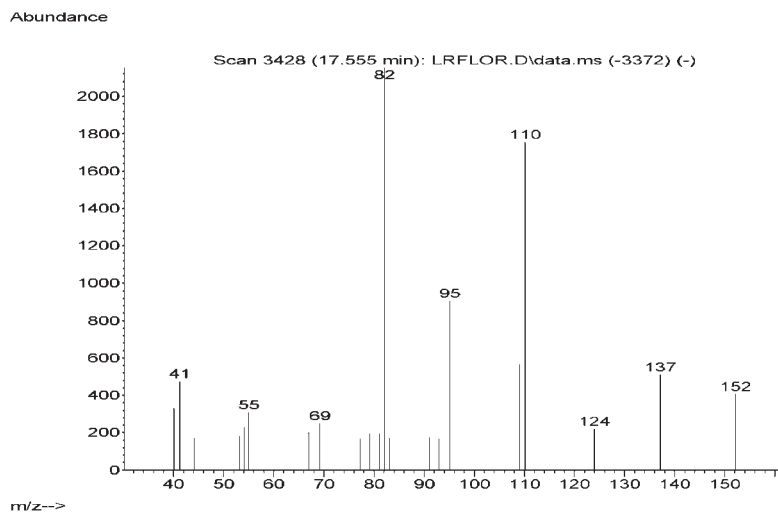


Figure S48. Mass spectra of piperitone in *Lippia lacunosa* and *Lippia rotundifolia* essential oils.

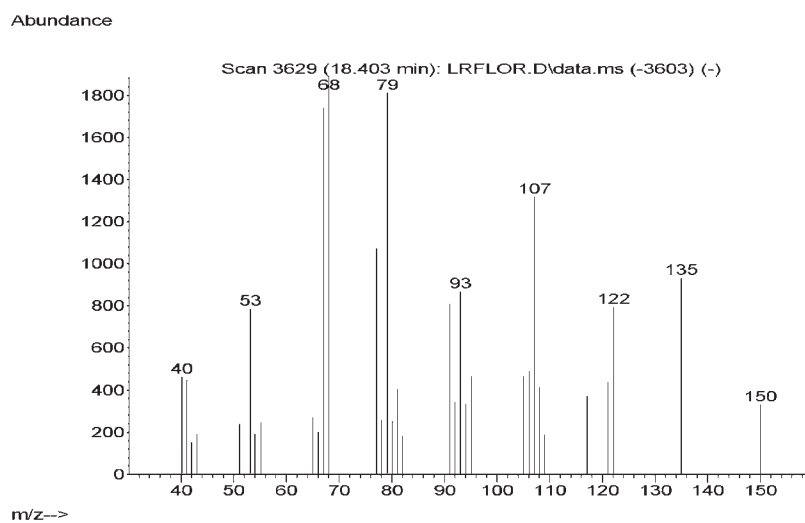


Figure S49. Mass spectra of perilla aldehyde in *Lippia lacunosa* and *Lippia rotundifolia* essential oils.

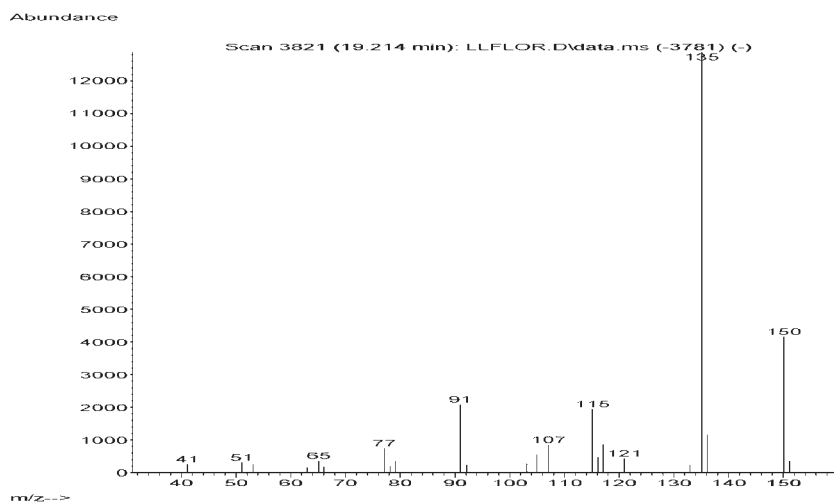


Figure S50. Mass spectra of thymol in *Lippia lacunosa* and *Lippia rotundifolia* essential oils.

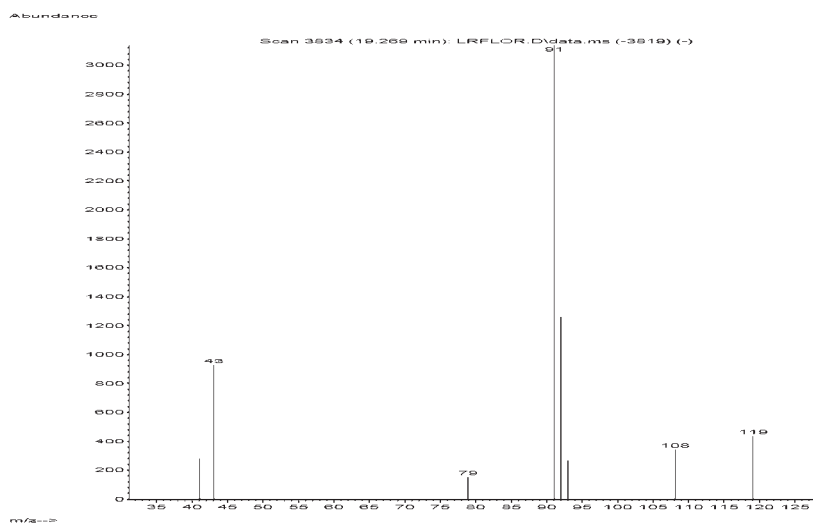


Figure S51. Mass spectra of trans-sabinyl acetate in *Lippia lacunosa* and *Lippia rotundifolia* essential oils.

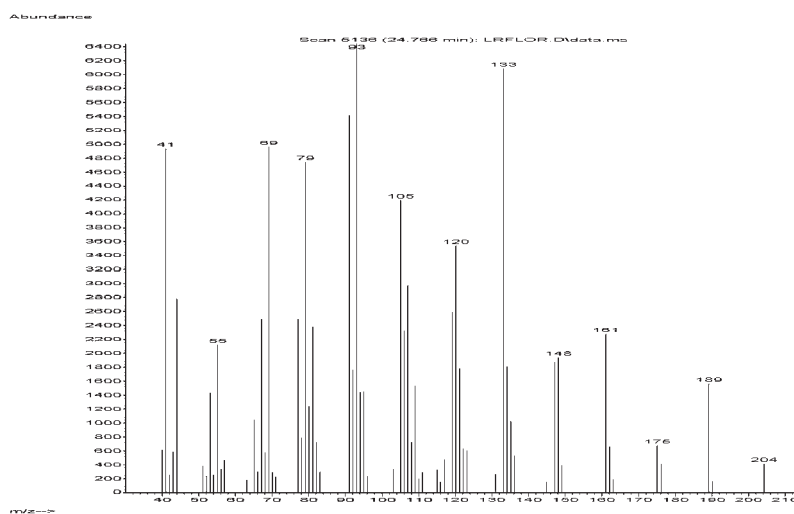


Figure S52. Mass spectra of myrtenyl acetate in *Lippia lacunosa* and *Lippia rotundifolia* essential oils.

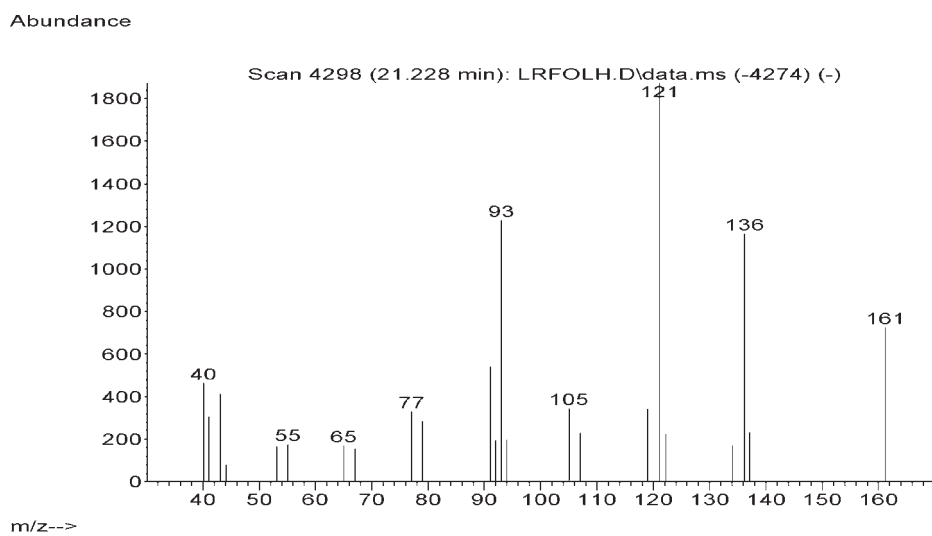


Figure S53. Mass spectra of delta-elemene in *Lippia lacunosa* and *Lippia rotundifolia* essential oils.

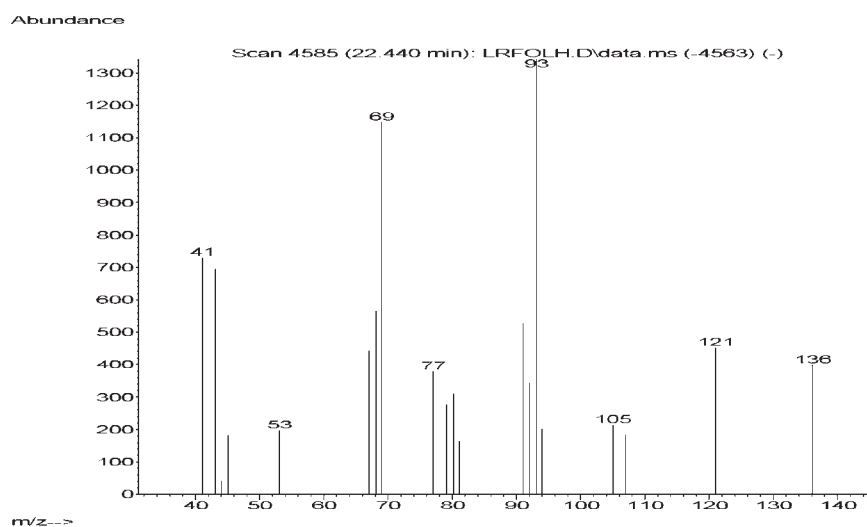


Figure S54. Mass spectra of neryl acetate in *Lippia lacunosa* and *Lippia rotundifolia* essential oils.

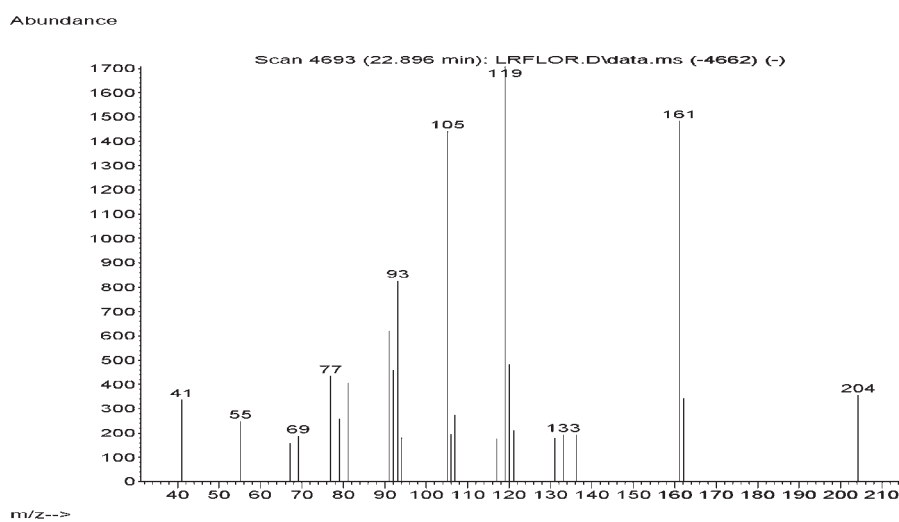


Figure S55. Mass spectra of alpha-copaene in *Lippia lacunosa* and *Lippia rotundifolia* essential oils.

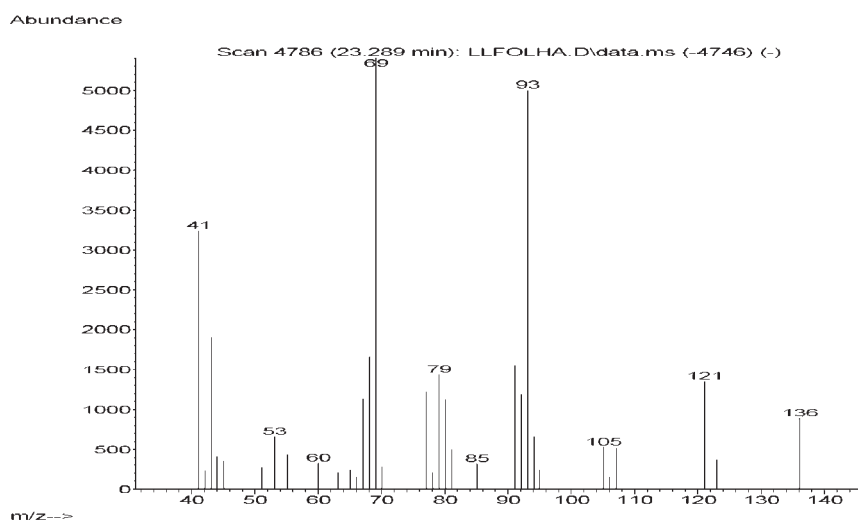


Figure S56. Mass spectra of geranyl acetate in *Lippia lacunosa* and *Lippia rotundifolia* essential oils.

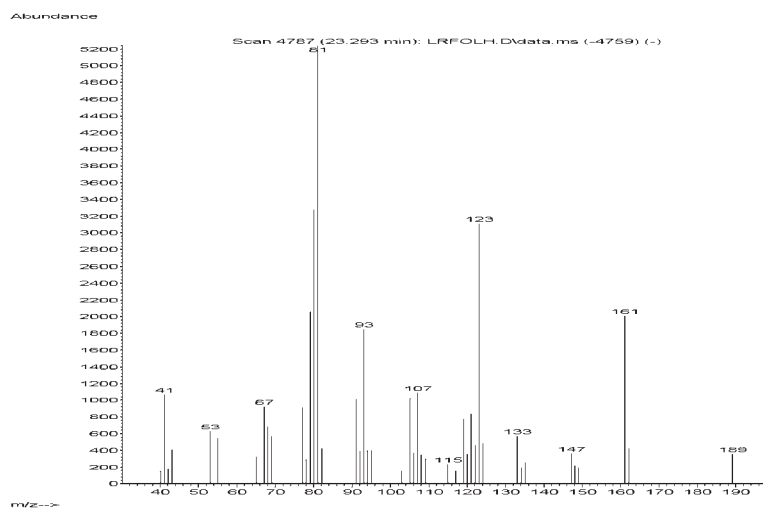


Figure S57. Mass spectra of beta-bourbonene in *Lippia lacunosa* and *Lippia rotundifolia* essential oils.

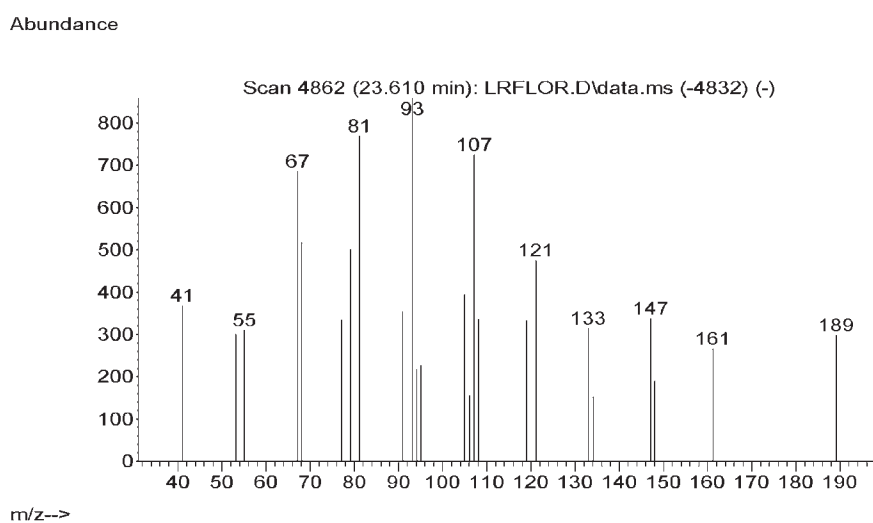


Figure S58. Mass spectra of beta-elemene in *Lippia lacunosa* and *Lippia rotundifolia* essential oils.

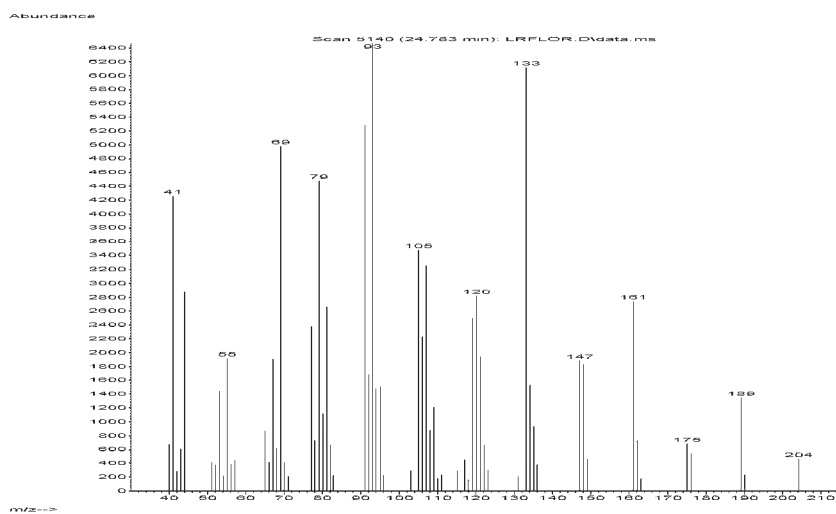


Figure S59. Mass spectra of trans-caryophyllene in *Lippia lacunosa* and *Lippia rotundifolia* essential oils.

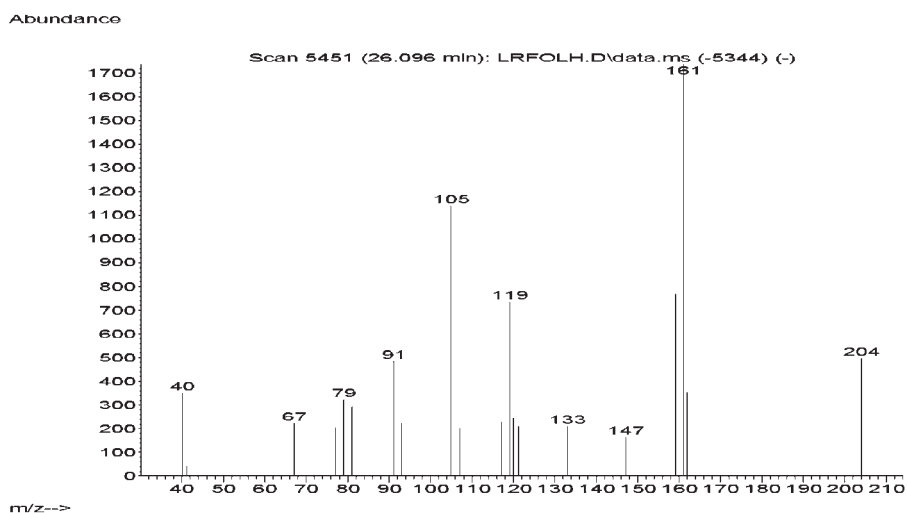


Figure S60. Mass spectra of muurola-3,5-diene in *Lippia lacunosa* and *Lippia rotundifolia* essential oils.

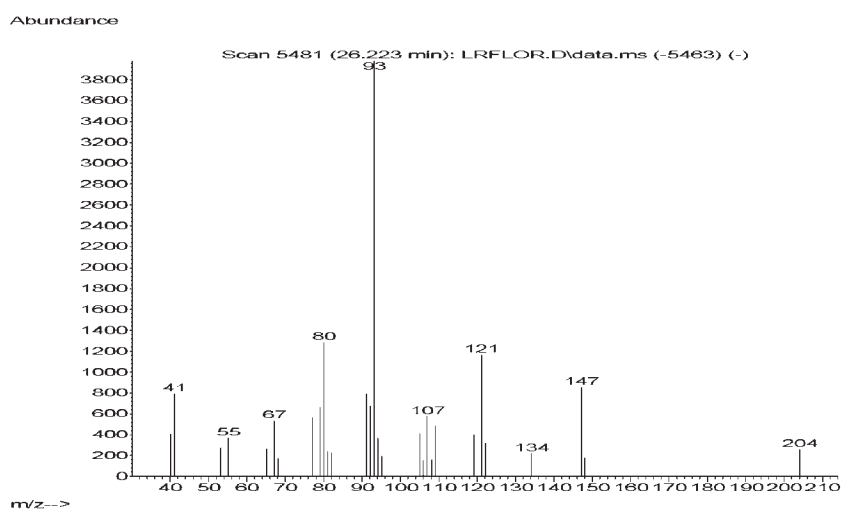


Figure S61. Mass spectra of alpha-humulene in *Lippia lacunosa* and *Lippia rotundifolia* essential oils.

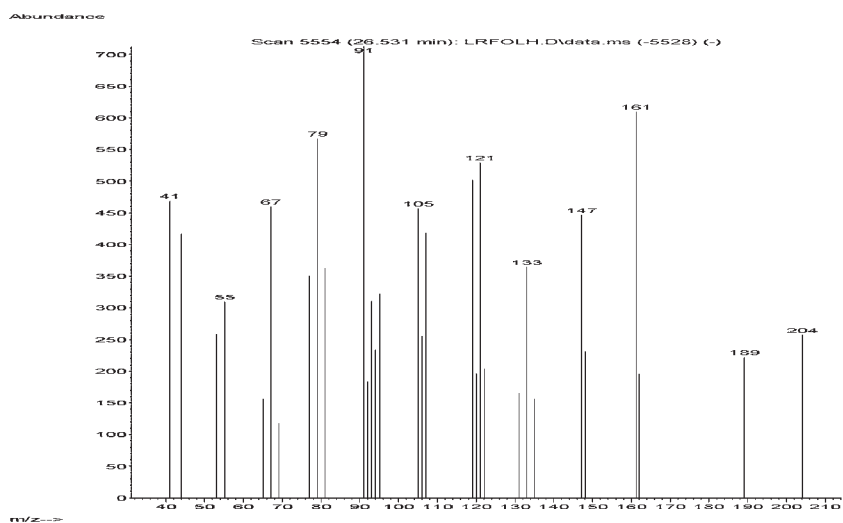


Figure S62. Mass spectra of allo-aromadendrene in *Lippia lacunosa* and *Lippia rotundifolia* essential oils.

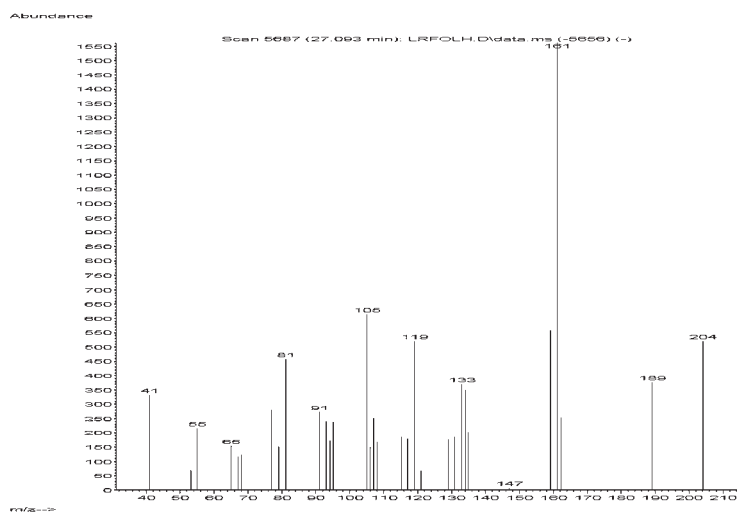


Figure S63. Mass spectra of cadina-1(6),4-diene in *Lippia lacunosa* and *Lippia rotundifolia* essential oils.

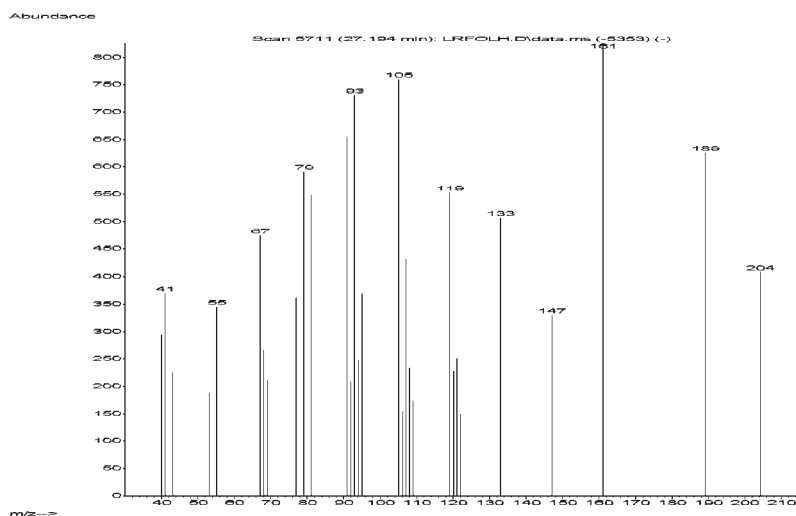


Figure S64. Mass spectra of gamma-gurjunene in *Lippia lacunosa* and *Lippia rotundifolia* essential oils.

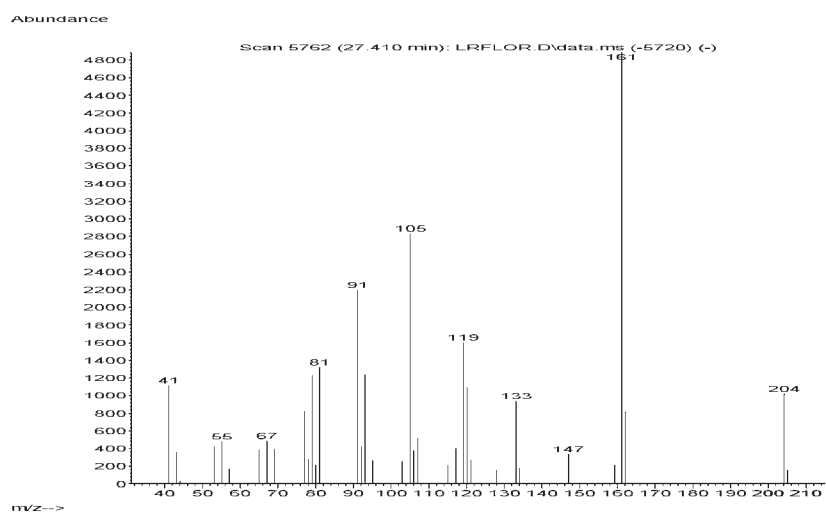


Figure S65. Mass spectra of gamma-murolene in *Lippia lacunosa* and *Lippia rotundifolia* essential oils.

ARYL-CURCUMENE

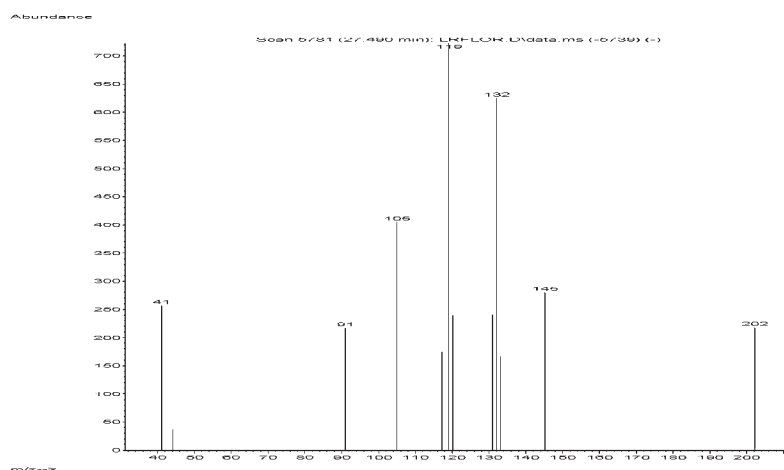


Figure S66. Mass spectra of neryl acetate in *Lippia lacunosa* and *Lippia rotundifolia* essential oils.

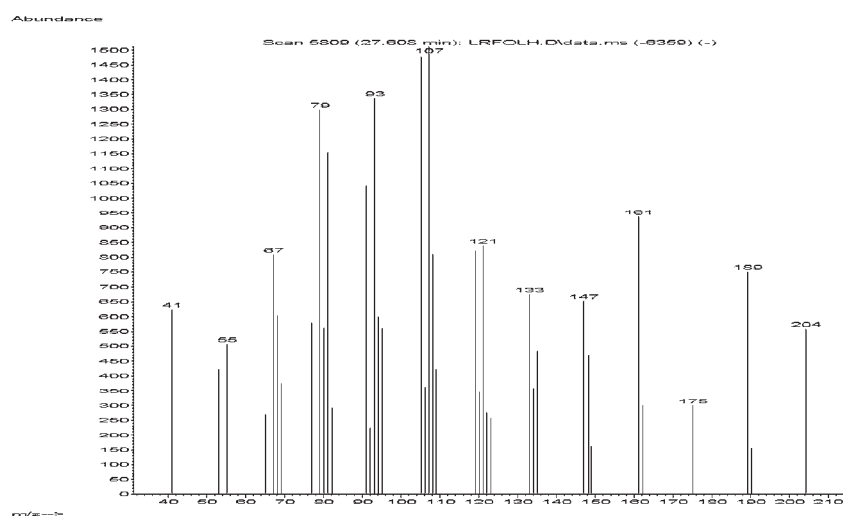


Figure S67. Mass spectra of beta-selinene in *Lippia lacunosa* and *Lippia rotundifolia* essential oils.

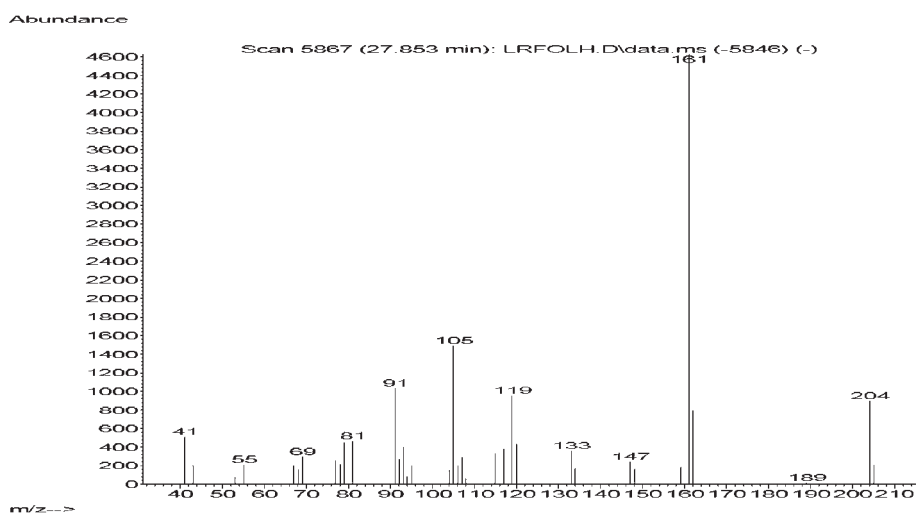


Figure S68. Mass spectra of muurola-4(14),5-diene in *Lippia lacunosa* and *Lippia rotundifolia* essential oils.

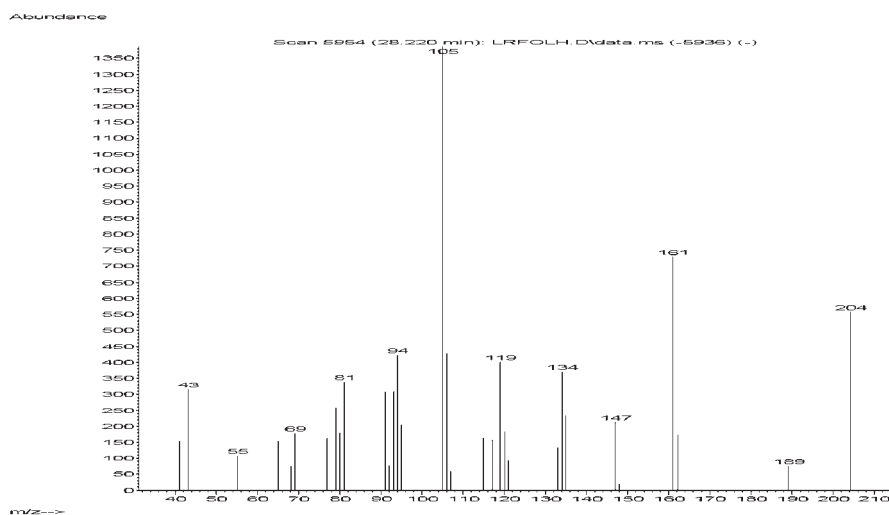


Figure S69. Mass spectra of alpha-muurolene in *Lippia lacunosa* and *Lippia rotundifolia* essential oils.

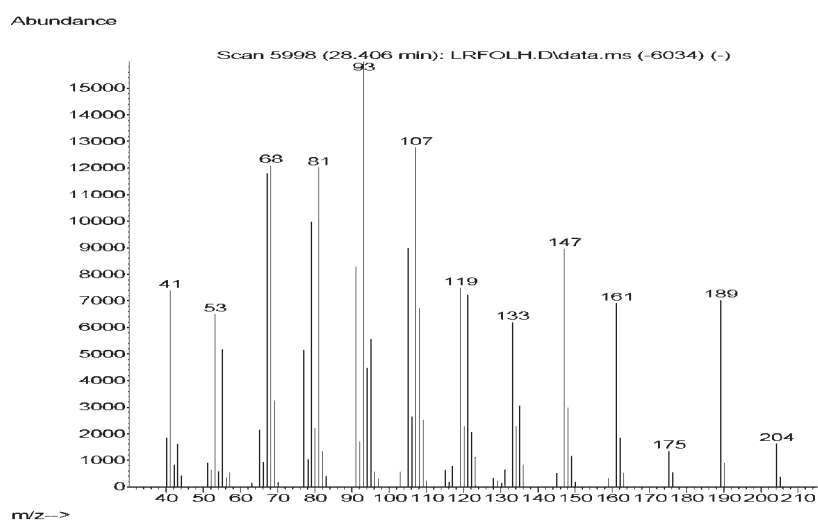


Figure S70. Mass spectra of germacrene A in *Lippia lacunosa* and *Lippia rotundifolia* essential oils.

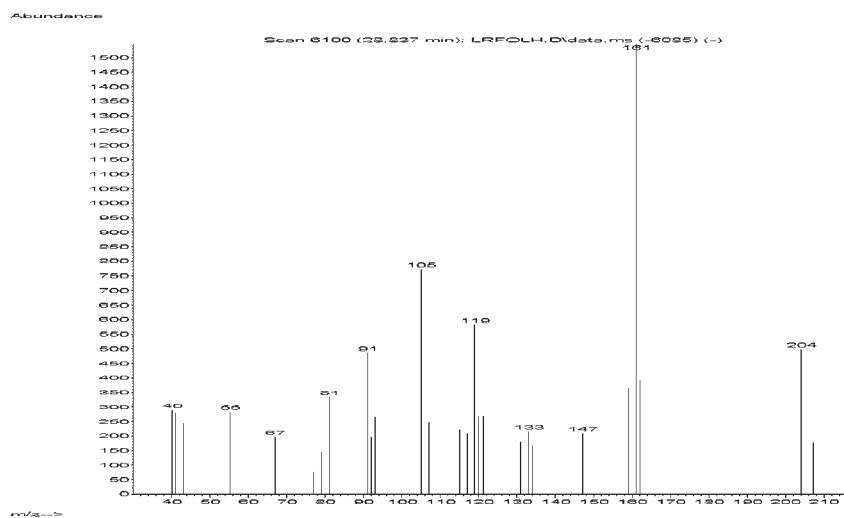


Figure S71. Mass spectra of gamma-cadinene in *Lippia lacunosa* and *Lippia rotundifolia* essential oils.

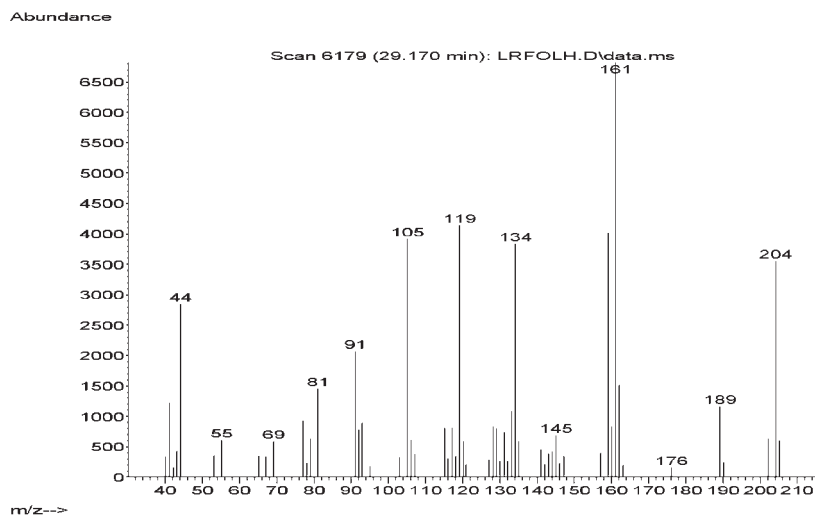


Figure S72. Mass spectra of delta-cadinene in *Lippia lacunosa* and *Lippia rotundifolia* essential oils.

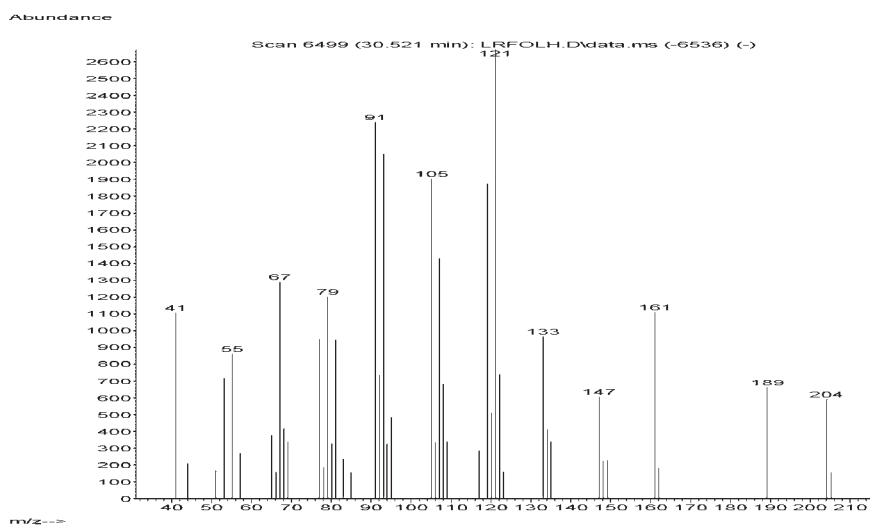


Figure S73. Mass spectra of germacrene B in *Lippia lacunosa* and *Lippia rotundifolia* essential oils.

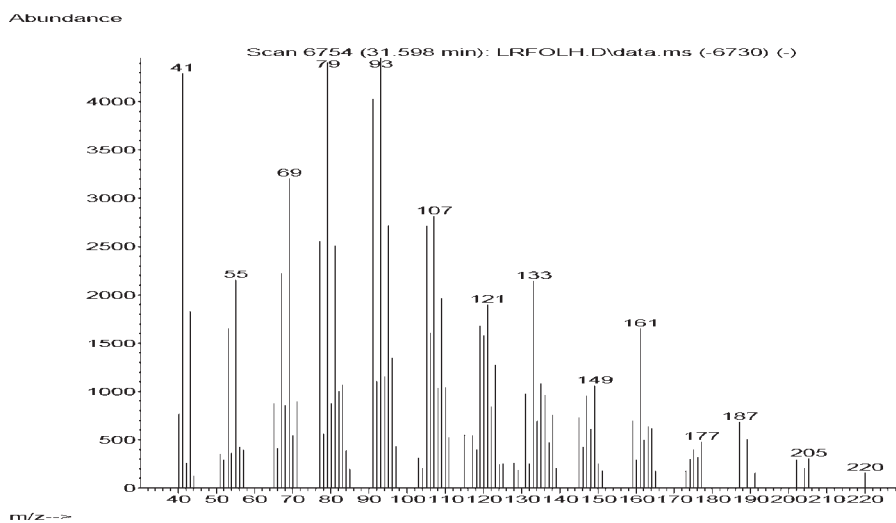


Figure S74. Mass spectra of caryophyllene oxide in *Lippia lacunosa* and *Lippia rotundifolia* essential oils.

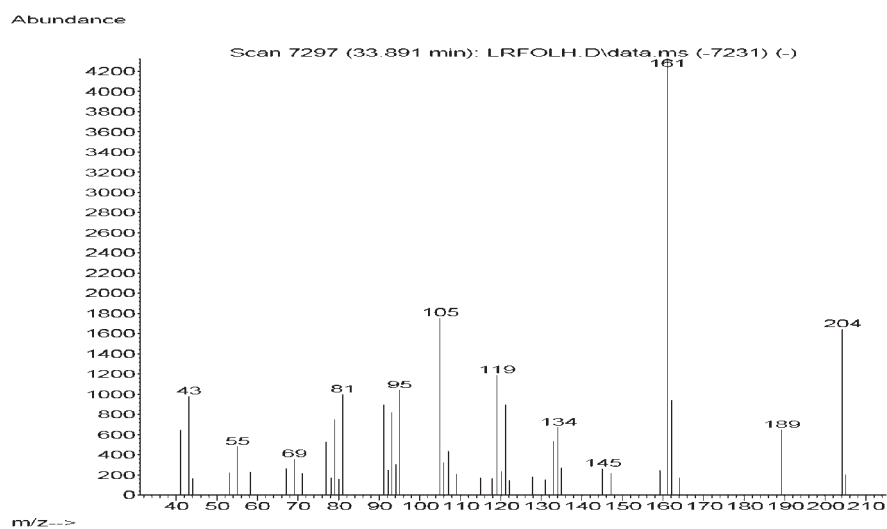


Figure S75. Mass spectra of epi-alpha-cadinol or epi-alpha-muuroiol in *Lippia lacunosa* and *Lippia rotundifolia* essential oils.

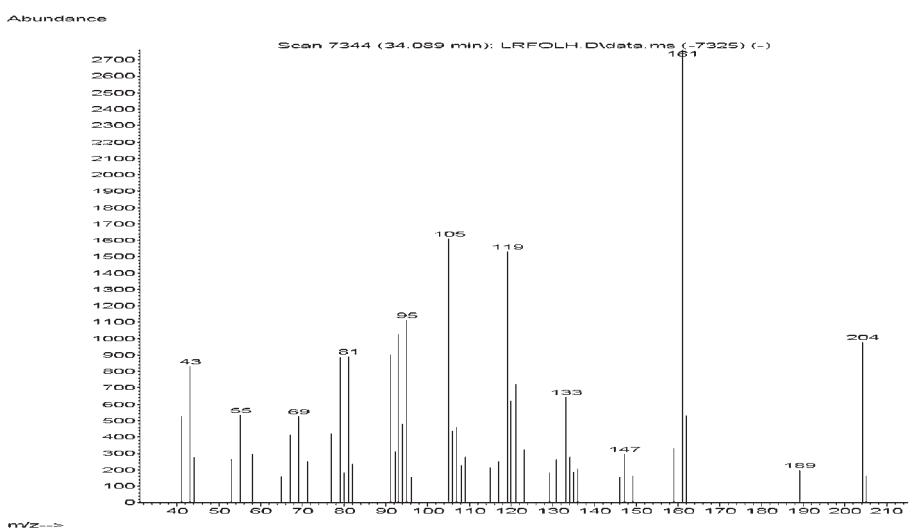


Figure S76. Mass spectra of alpha-muuroiol in *Lippia lacunosa* and *Lippia rotundifolia* essential oils.

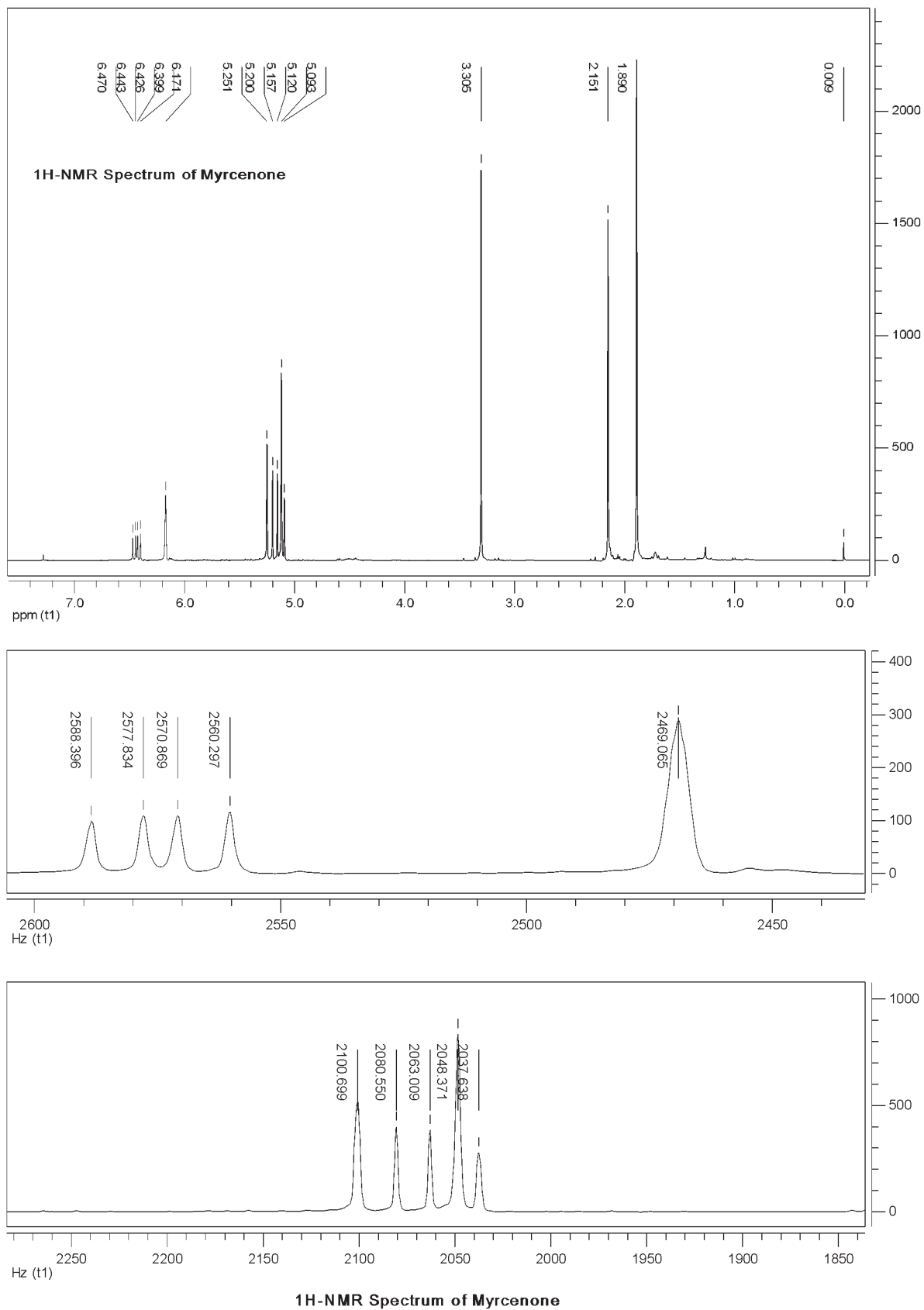


Figure S77. ¹H-NMR spectrum of Myrcenone.

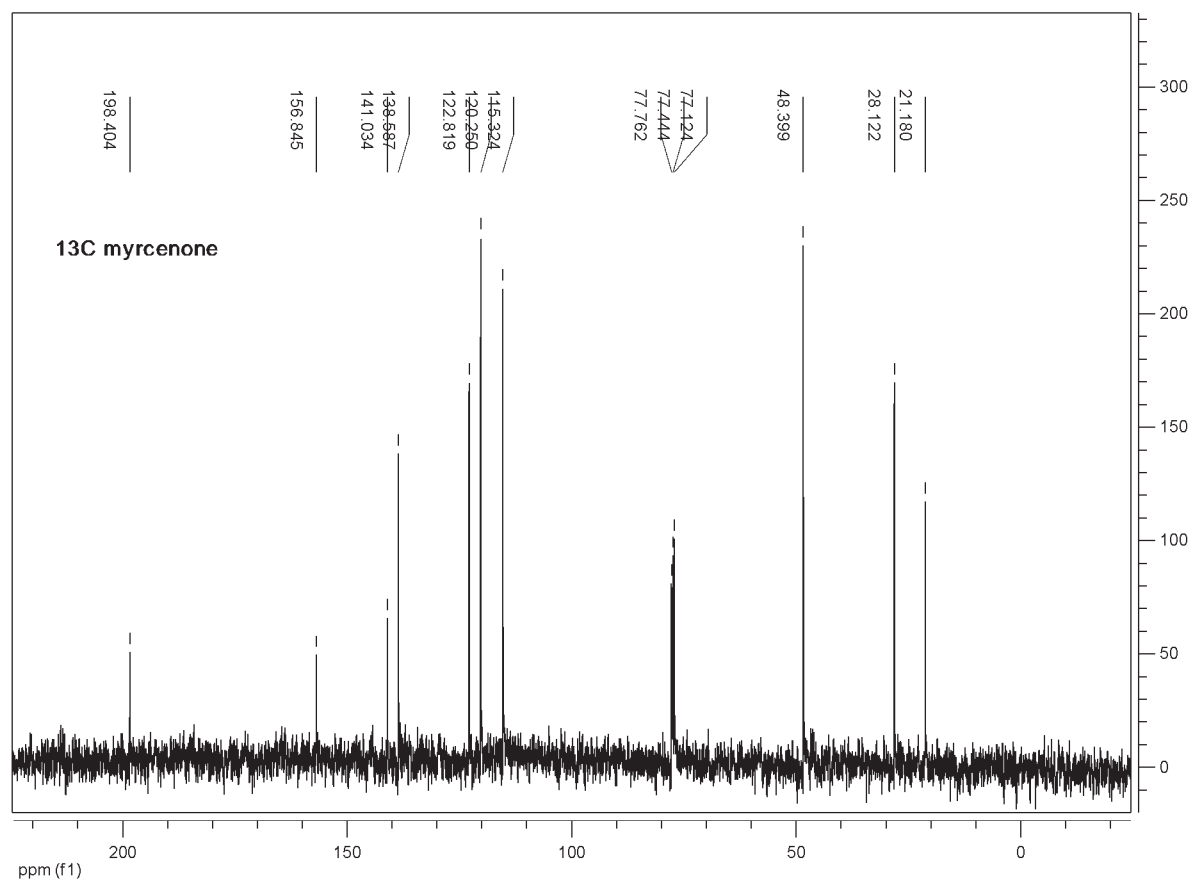


Figure S78. ^{13}C -NMR spectrum of myrcenone.