

Intraspecific Variability in the Essential Oil Composition of *Lychnophora ericoides*

Cynthia C. G. V. Lyra,^a Roberto F. Vieira,^b Carolina B. A. de Oliveira,^c Suzana C. Santos,^c
José C. Seraphin^d and Pedro H. Ferri^{c,*}

^aUniversidade Católica de Brasília, SGAN 916 Módulo B, 70790-160 Brasília-DF, Brazil

^bEmbrapa Recursos Genéticos e Biotecnologia, CP 02372, 70770-900 Brasília-DF, Brazil

^cLaboratório de Bioatividade Molecular, Instituto de Química, Universidade Federal de Goiás,
CP 131, 74001-970 Goiânia-GO, Brazil

^dNúcleo de Estatística Aplicada, Instituto de Matemática e Estatística, Universidade Federal de Goiás,
CP 131, 74001-970 Goiânia-GO, Brazil

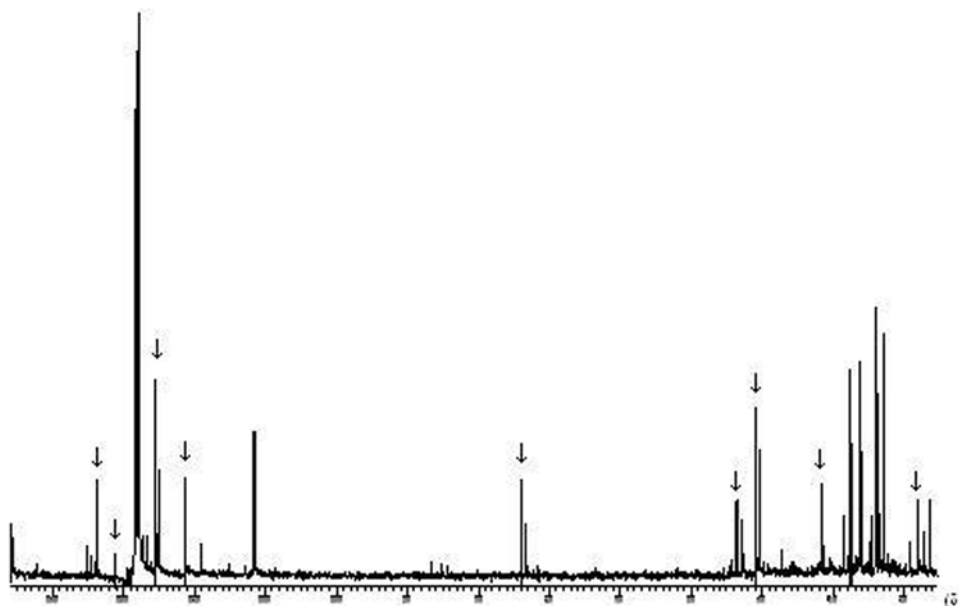


Figure S1. ¹³C-NMR (75 MHz, C₆D₆) of essential oil from leaves of *L. ericoides* with and without scent, which consist mainly of α -bisabolol (marked signals).

*e-mail: pedro@quimica.ufg.br

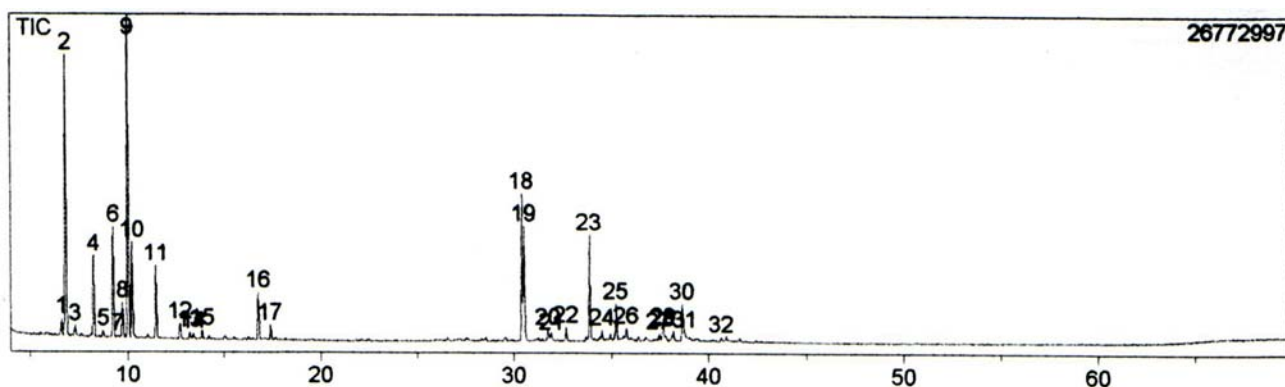


Figure S2. Total Ion Chromatogram (TIC) of essential oil from leaves of *L. ericoides* with scent collected in Caldas Novas' State Park (CN).

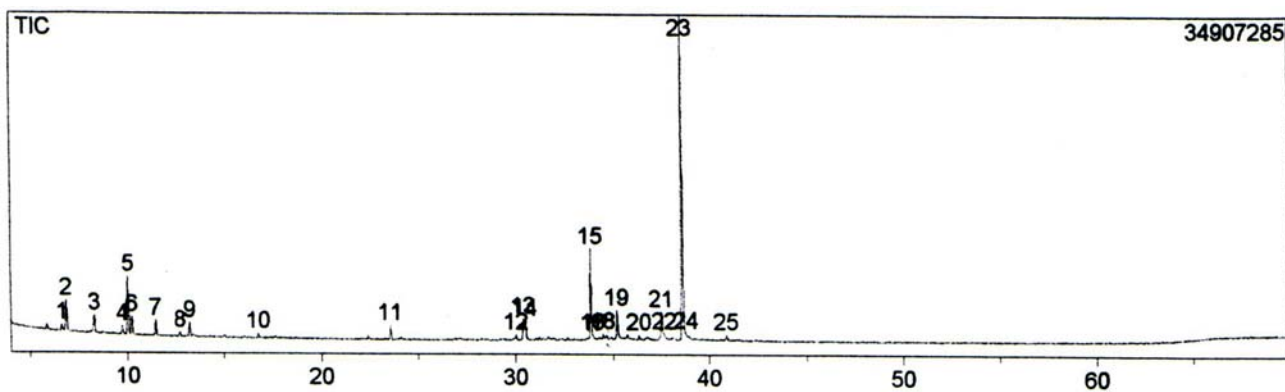


Figure S3. TIC of essential oil from leaves of *L. ericoides* without any scent collected in Caldas Novas' State Park (CN).

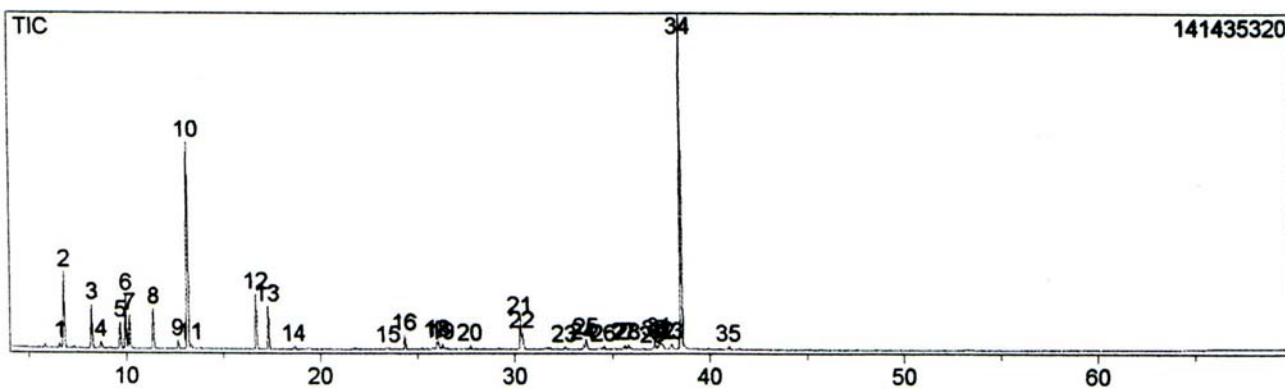


Figure S4. TIC of essential oil from leaves of *L. ericoides* with scent collected in Brasília's National Park (BN).

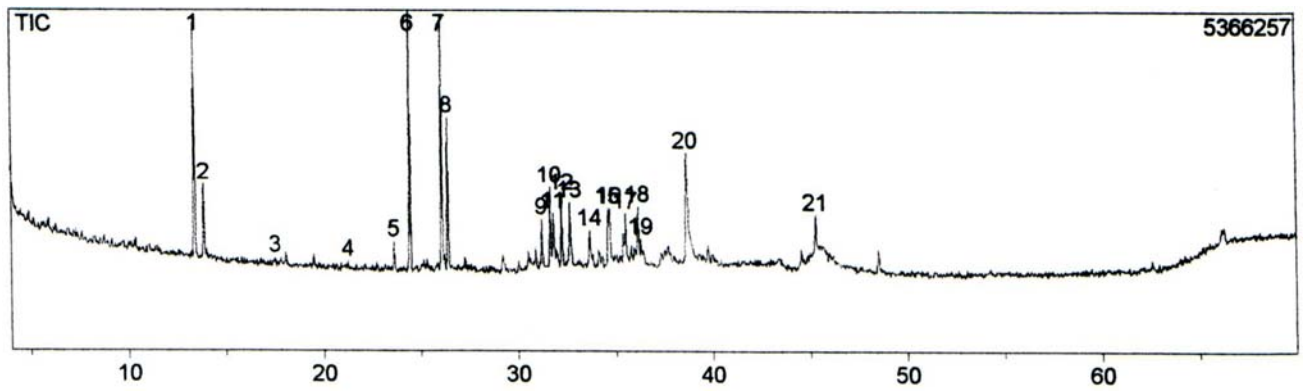


Figure S5. TIC of essential oil from leaves of *L. ericoides* without any scent collected in Brasília's National Park (BN).

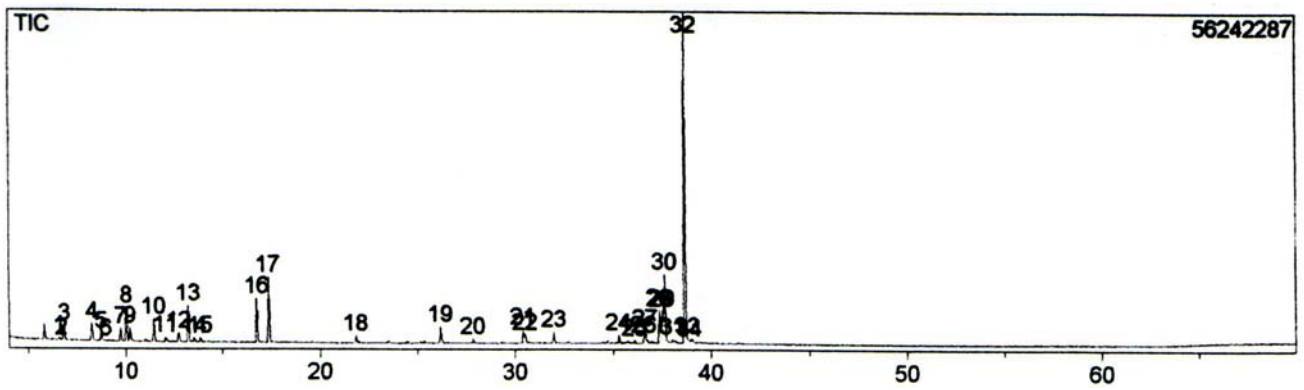


Figure S6. TIC of essential oil from leaves of *L. ericoides* with scent collected in Santo Antônio do Descoberto site (SA).

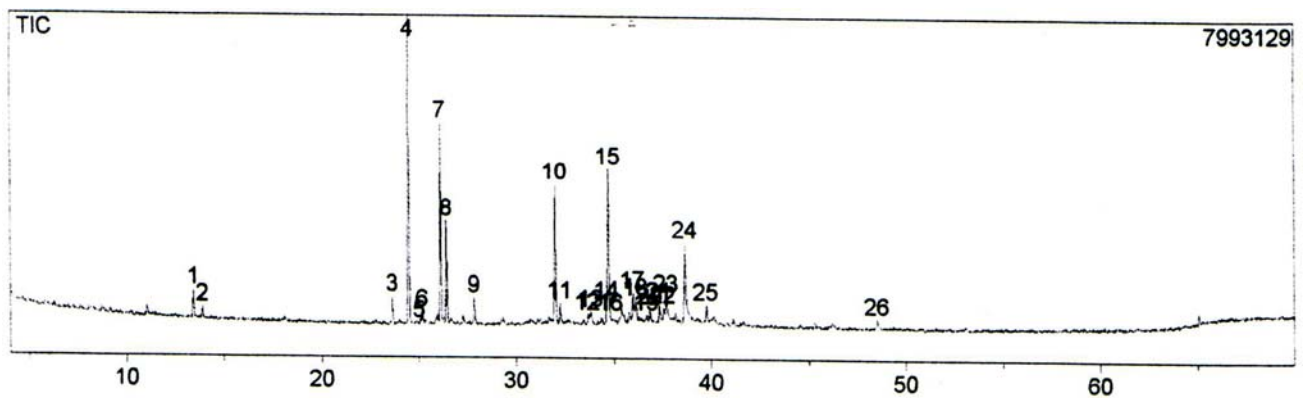


Figure S7. TIC of essential oil from leaves of *L. ericoides* without any scent collected in Santo Antônio do Descoberto site (SA).

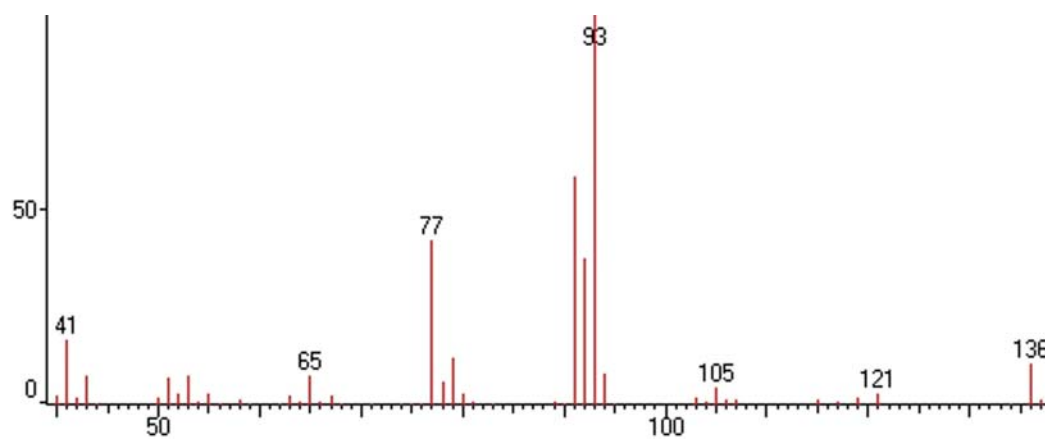


Figure S8. Mass spectrum of α -thujene.

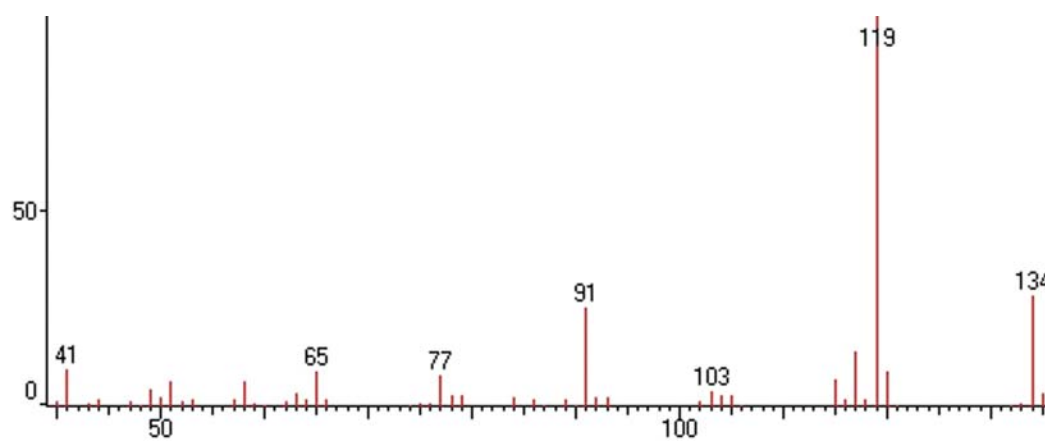


Figure S9. Mass spectrum of *o*-cymene.

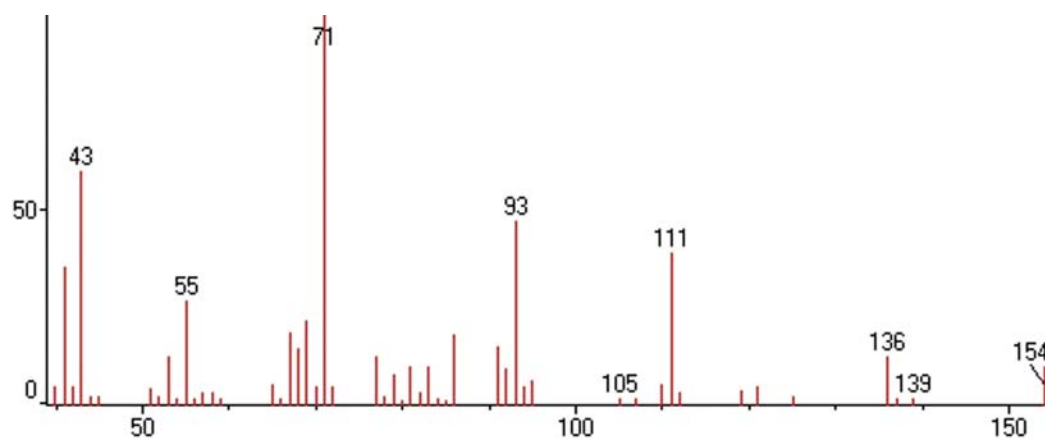


Figure S10. Mass spectrum of terpin-4-ol.

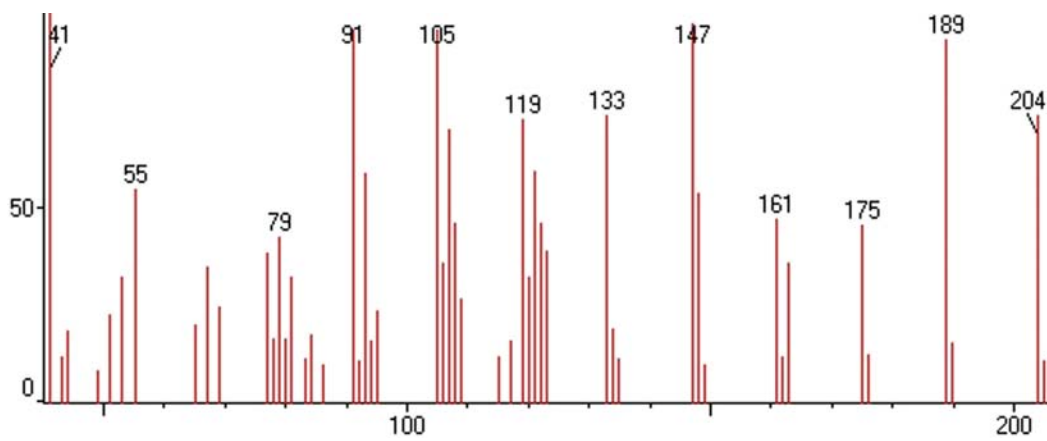


Figure S11. Mass spectrum of δ -elemene.

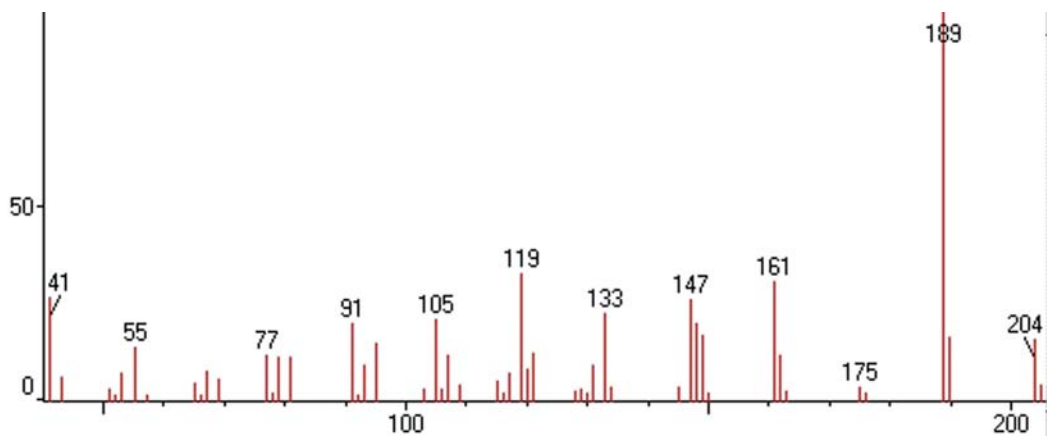


Figure S12. Mass spectrum of β -maaliene.

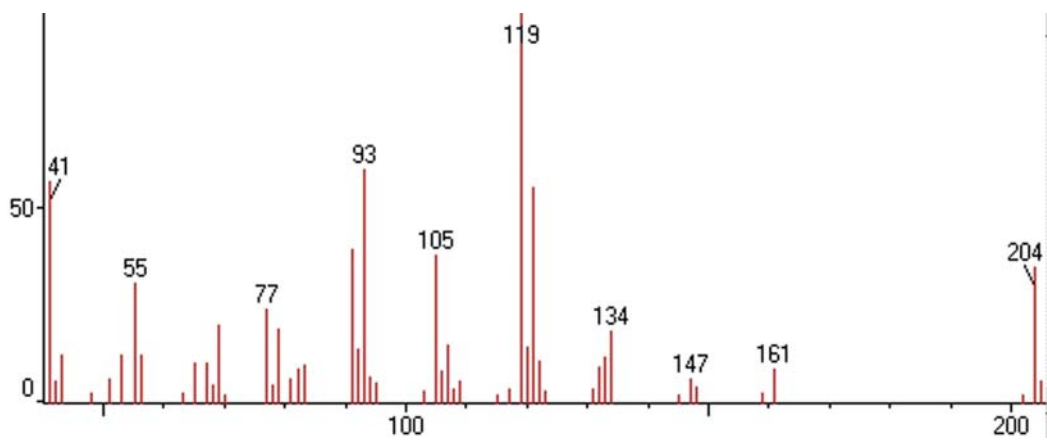


Figure S13. Mass spectrum of γ -curcumene.

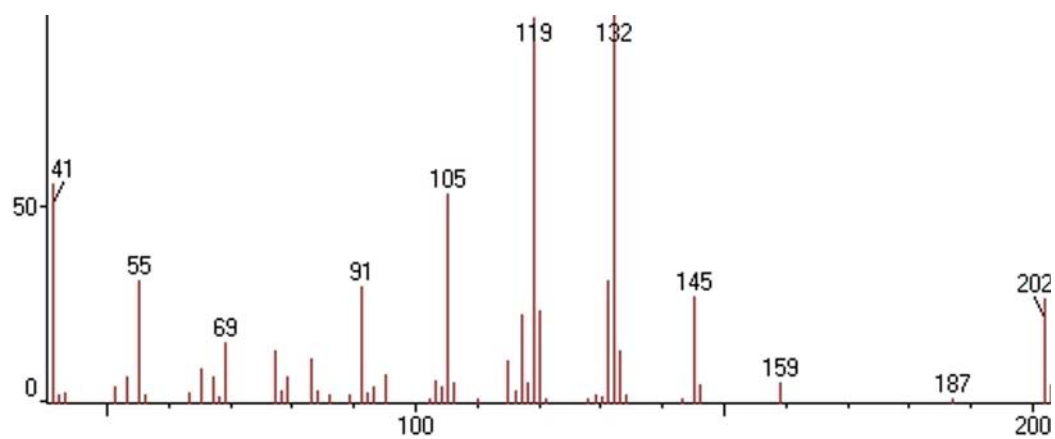


Figure S14. Mass spectrum of *ar*-curcumene.

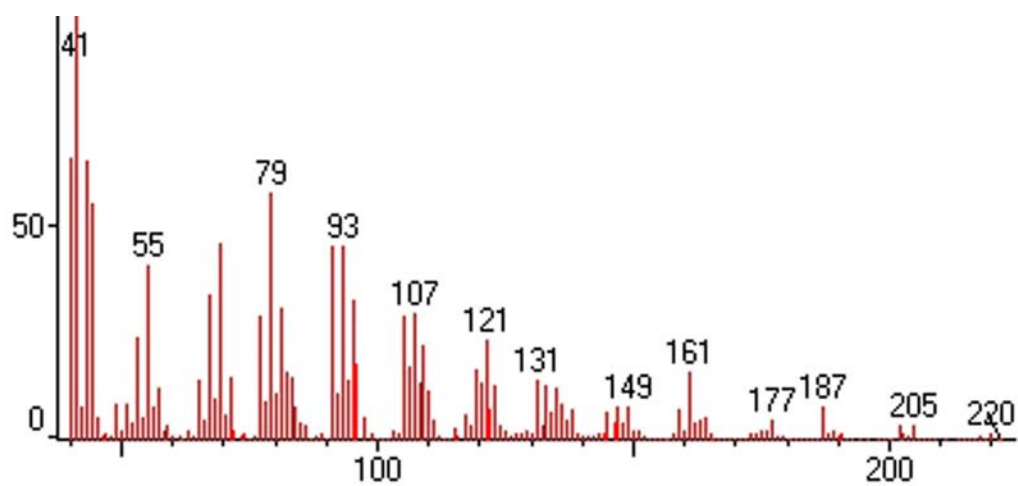


Figure S15. Mass spectrum of caryophyllene oxide.

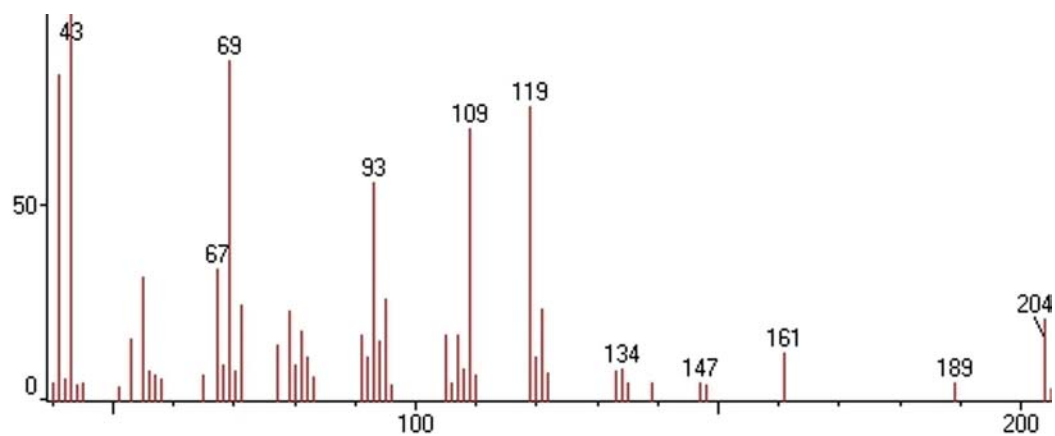


Figure S16. Mass spectrum of α -bisabolol.