

Seasonal Variability in the Essential Oils of Wild and Cultivated *Baccharis trimera*

Fabiano G. Silva,^a Carolina B. A. Oliveira,^b José Eduardo B. P. Pinto,^c Vivian E. Nascimento,^c
Suzana C. Santos,^b José C. Seraphim^d and Pedro H. Ferri^{*,b}

^aLaboratório de Cultura de Tecidos, Centro Federal de Educação Tecnológica de Rio Verde, CP 66,
75900-000 Rio Verde-GO, Brazil

^bLaboratório de Bioatividade Molecular, Instituto de Química, Universidade Federal de Goiás, CP 131,
74001-970 Goiânia-GO, Brazil

^cLaboratório de Cultura de Tecidos e Plantas Medicinais, Departamento de Agricultura,
Universidade Federal de Lavras, CP 37, 37200-000 Lavras-MG, Brazil

^dNúcleo de Estatística Aplicada, Instituto de Matemática e Estatística, Universidade Federal de Goiás, CP 131,
74001-970 Goiânia- GO, Brazil

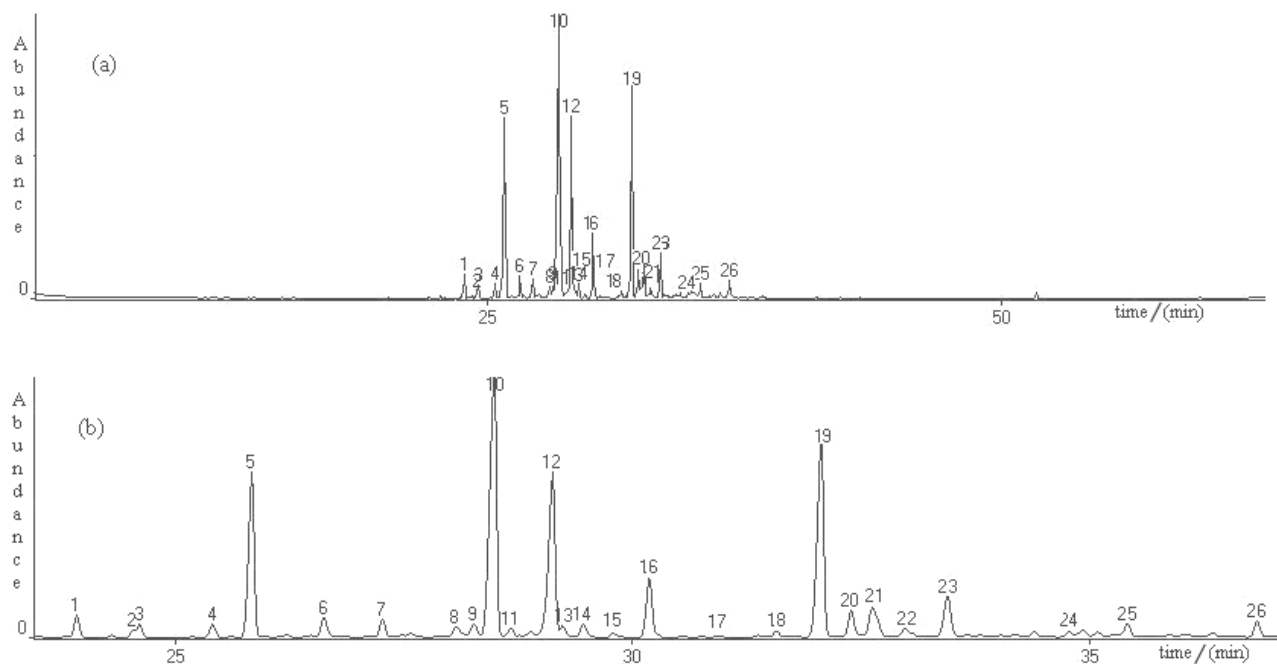


Figure S1. (a) Total Ion Count (TIC) obtained by GCMS of carqueja essential oil (*Baccharis trimera*); (b) TIC zoom showed the constituents (peak number) arranged in order of elution.

*e-mail: pedro@quimica.ufg.br

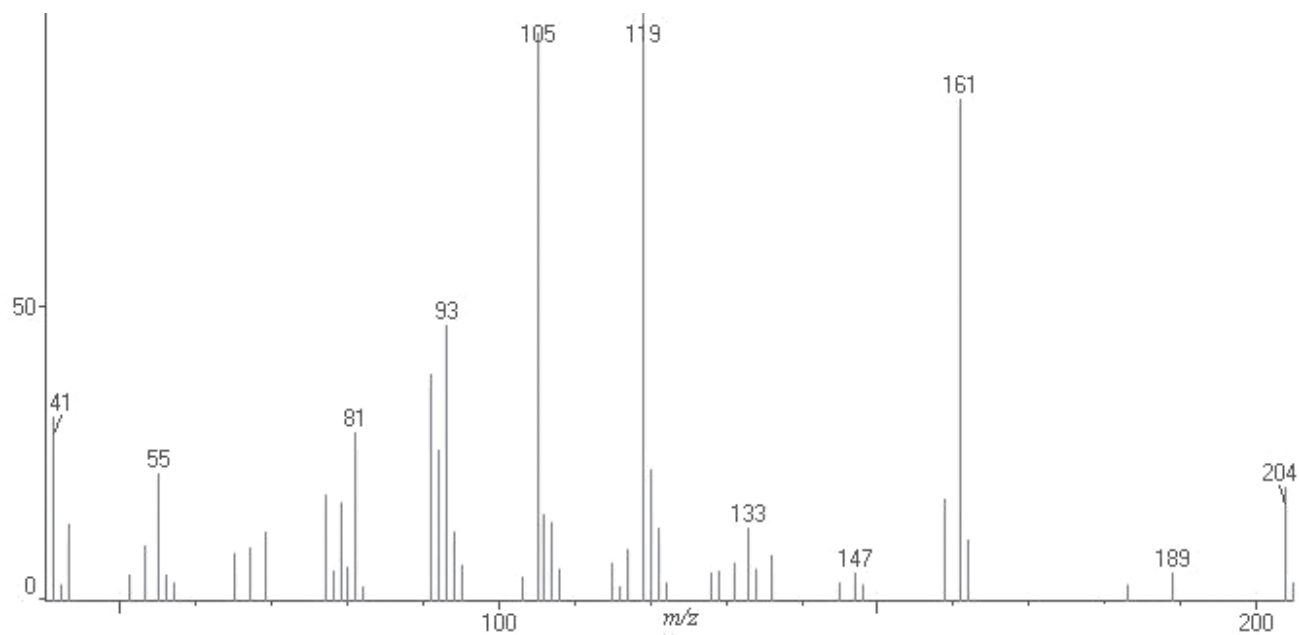


Figure S2. Mass spectrum of α -copaene (peak 1).

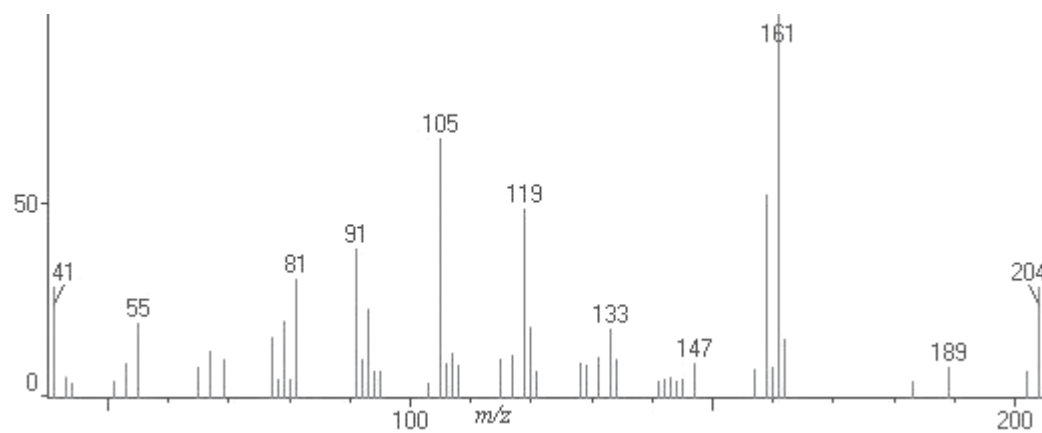


Figure S3. Mass spectrum of β -cubebene (peak 2).

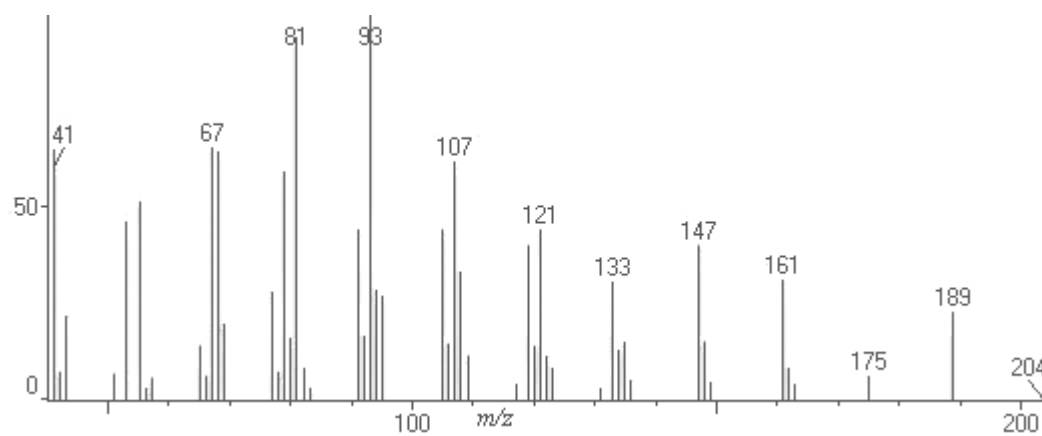


Figure S4. Mass spectrum of β -elemene (peak 3).

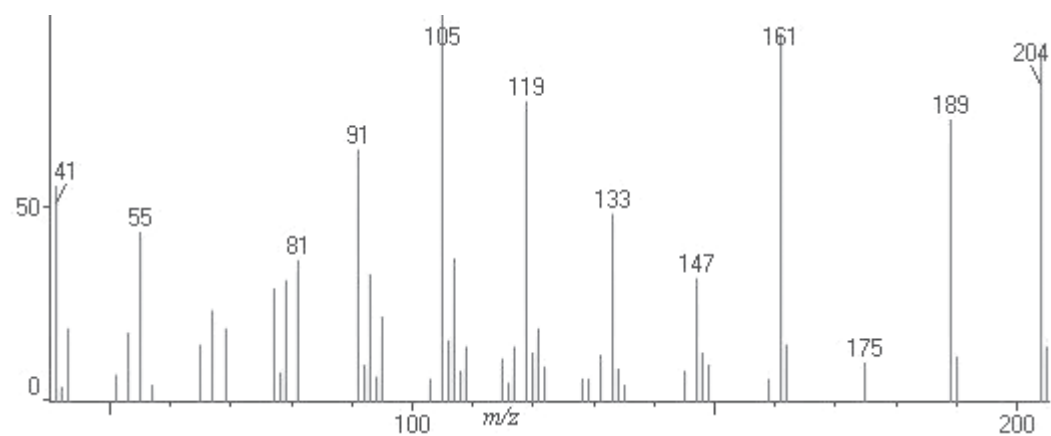


Figure S5. Mass spectrum of α -gurjunene (peak 4).

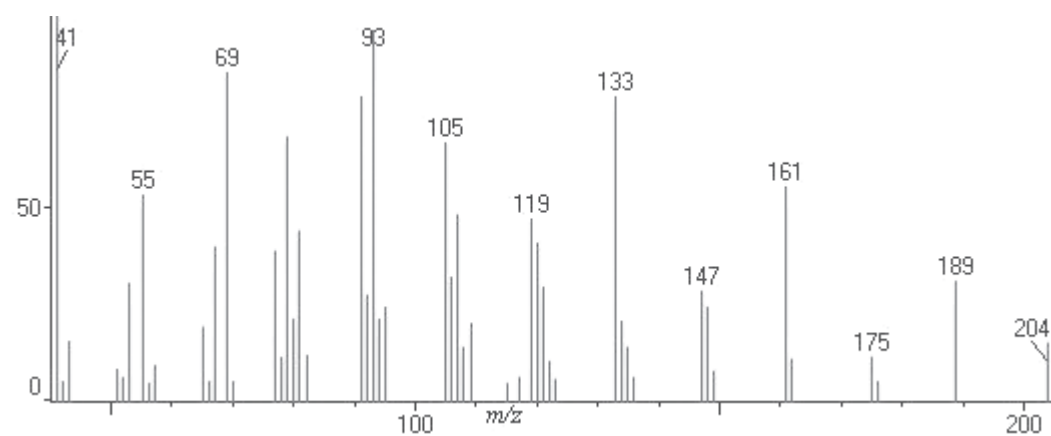


Figure S6. Mass spectrum of (*E*)-caryophyllene (peak 5).

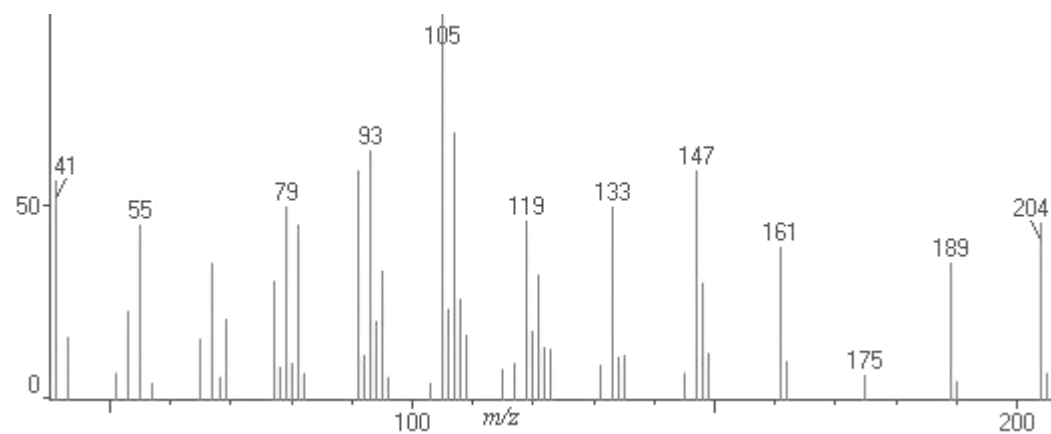


Figure S7. Mass spectrum of α -guaiene (peak 6).

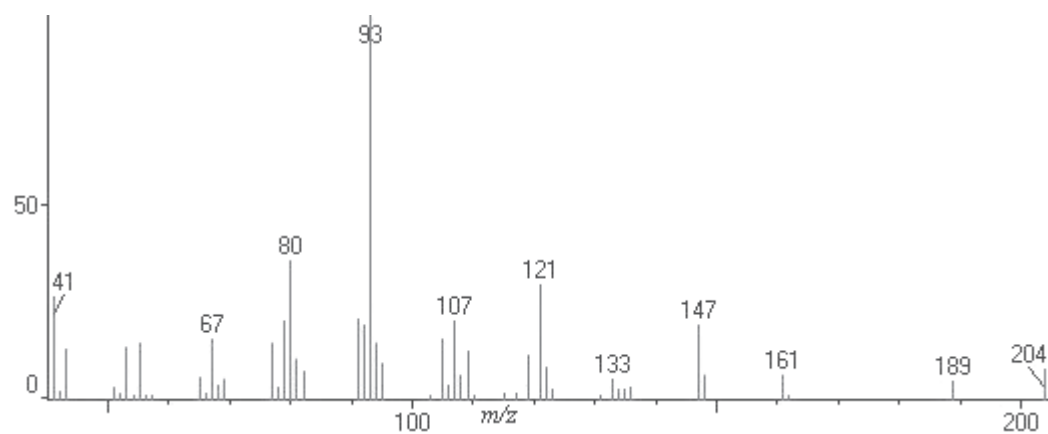


Figure S8. Mass spectrum of α -humulene (peak 7).

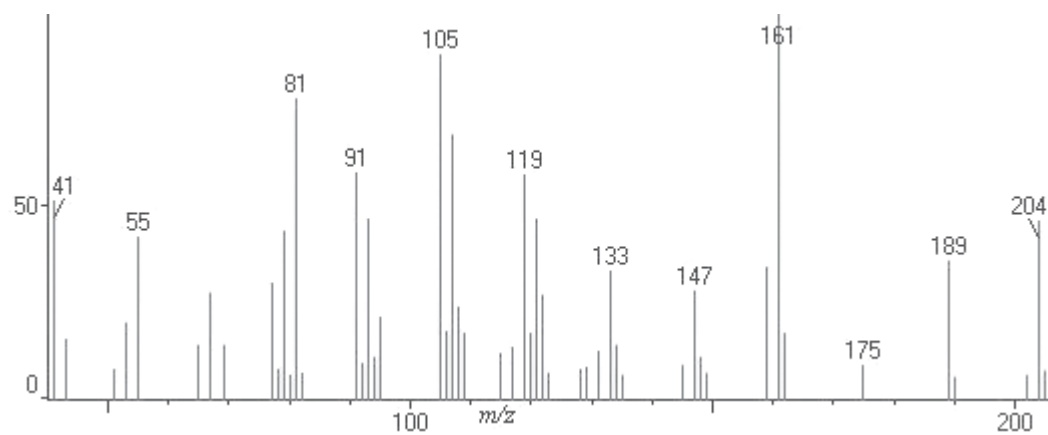


Figure S9. Mass spectrum of γ -gurjunene (peak 8).

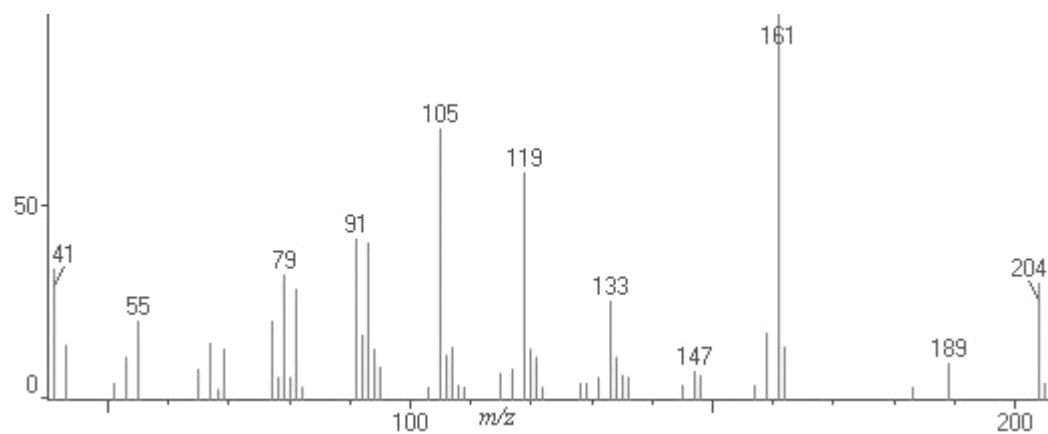


Figure S10. Mass spectrum of γ -murolene (peak 9).

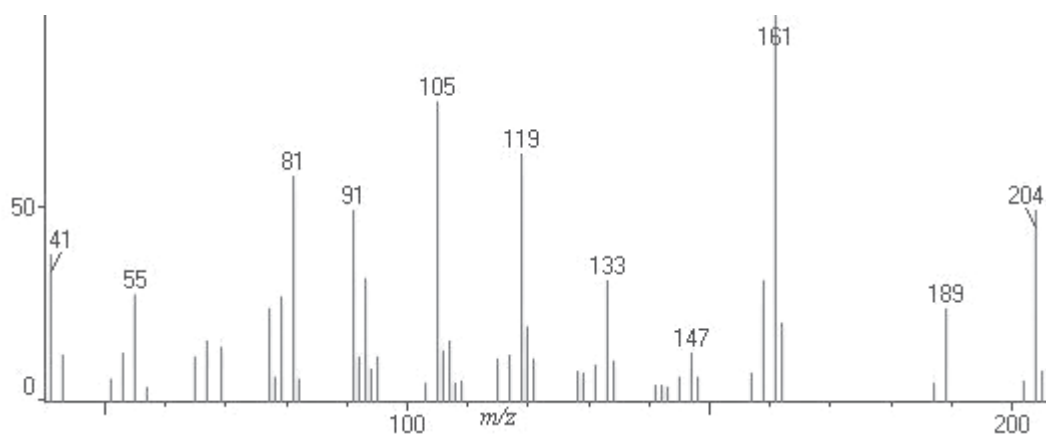


Figure S11. Mass spectrum of germacrene D (peak 10).

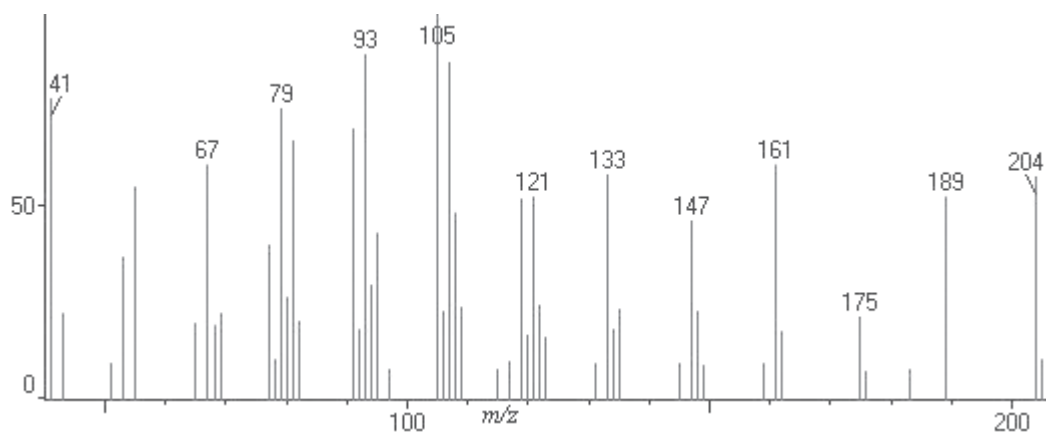


Figure S12. Mass spectrum of β -selinene (peak 11).

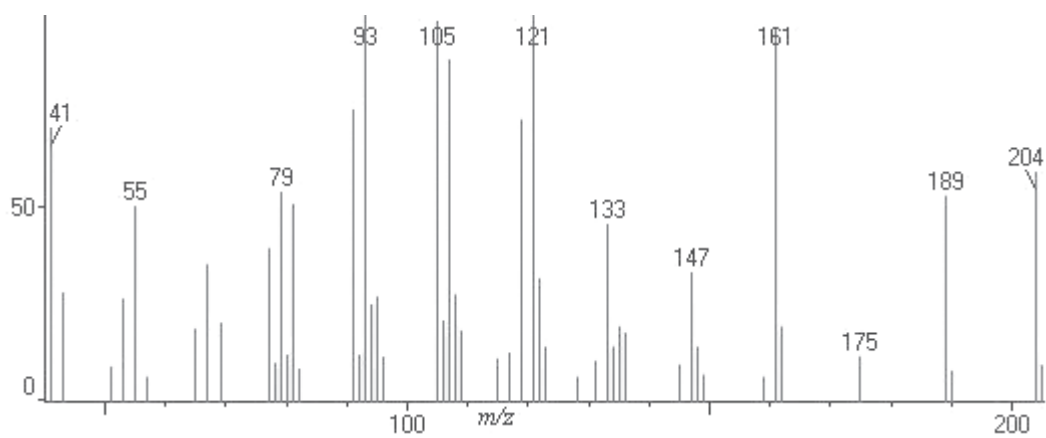


Figure S13. Mass spectrum of bicyclogermacrene (peak 12).

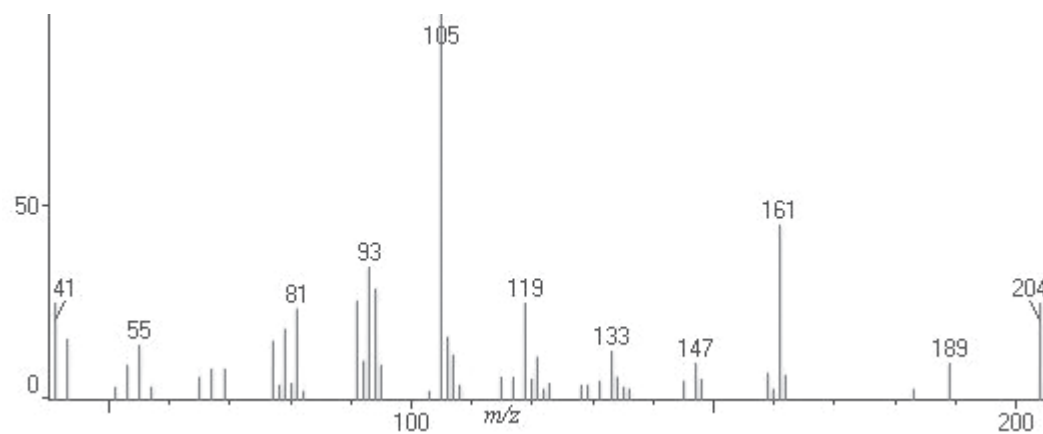


Figure S14. Mass spectrum of α -muurulene (peak 13).

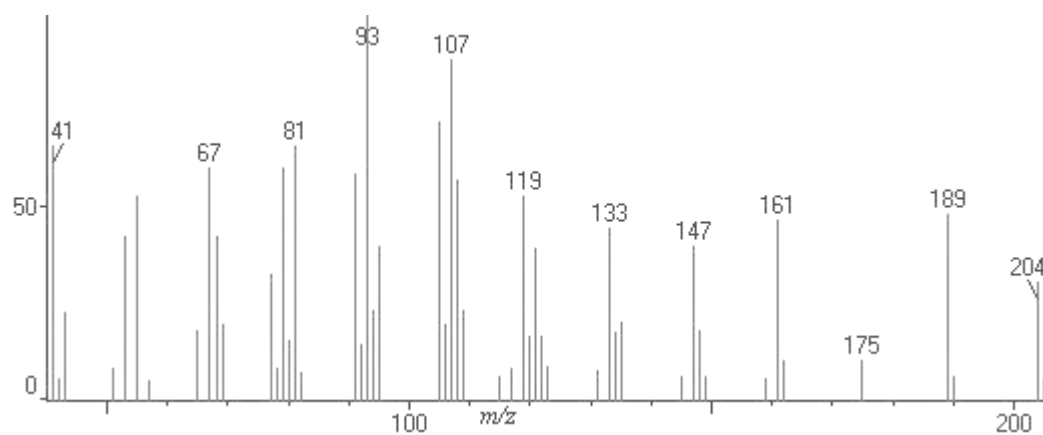


Figure S15. Mass spectrum of α -bulnecene (peak 14).

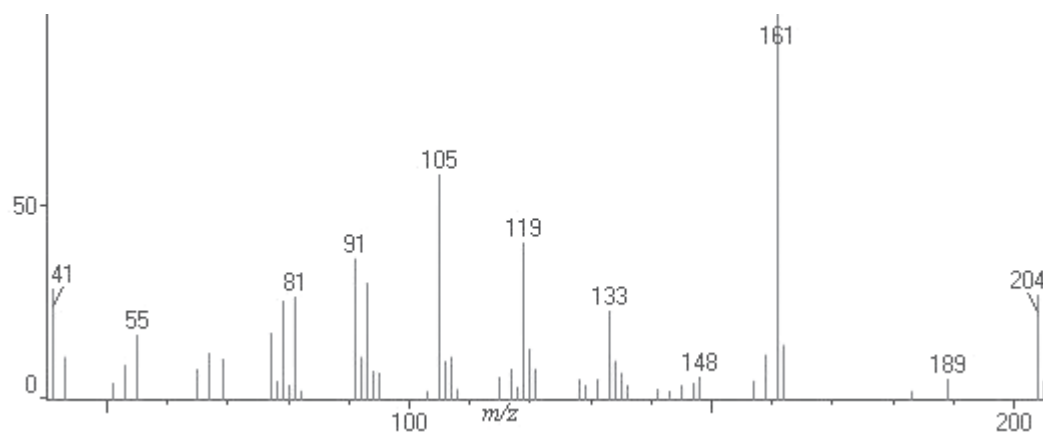


Figure S16. Mass spectrum of γ -cadinene (peak 15).

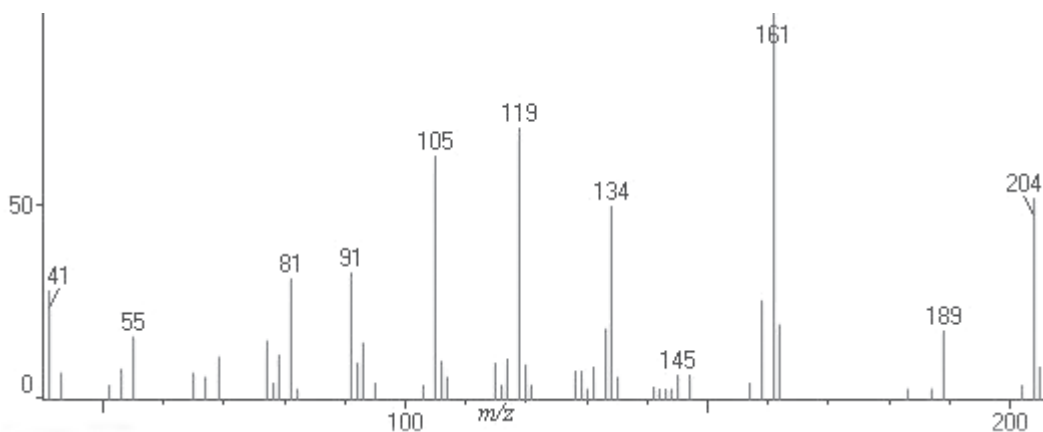


Figure S17. Mass spectrum of δ -cadinene (peak 16).

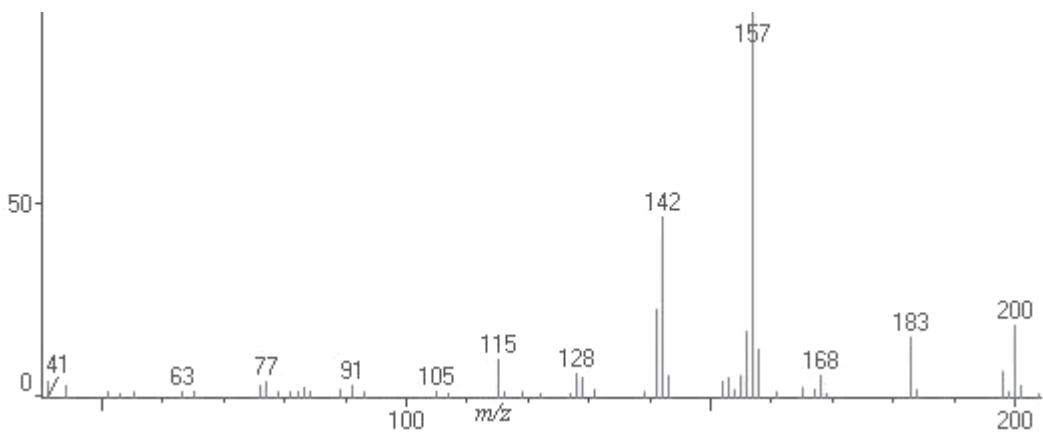


Figure S18. Mass spectrum of δ -calacorene (peak 17).

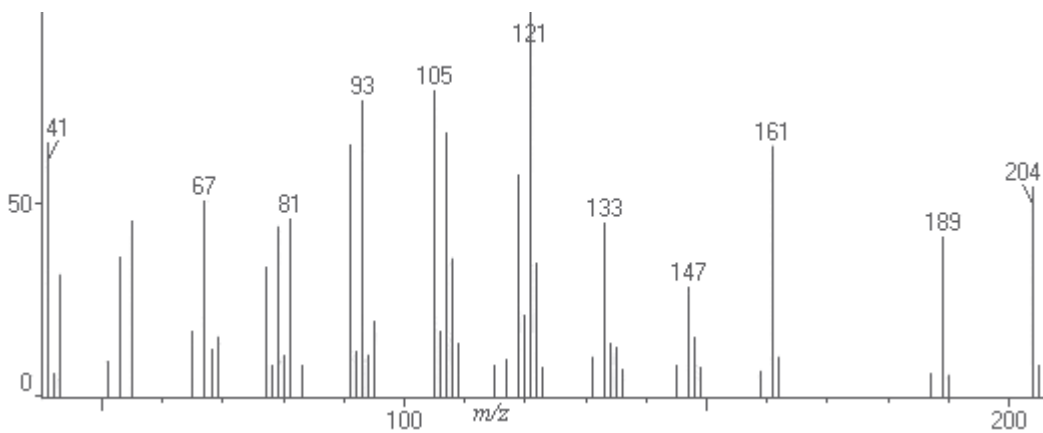


Figure S19. Mass spectrum of germacrene B (peak 18).

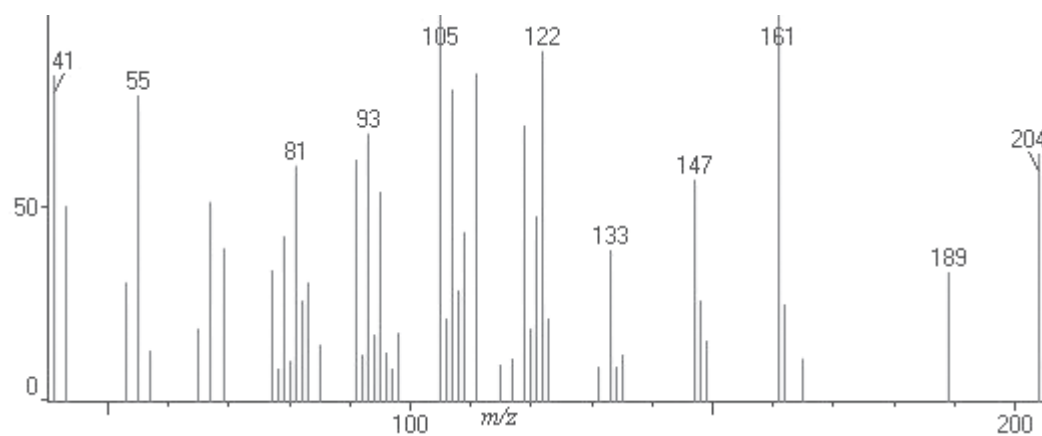


Figure S20. Mass spectrum of ledol (peak 19).

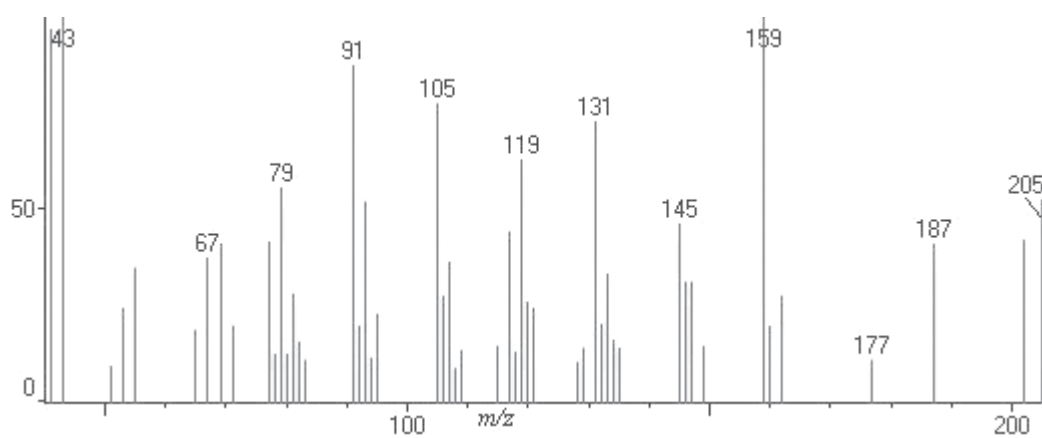


Figure S21. Mass spectrum of spathulenol (peak 20).

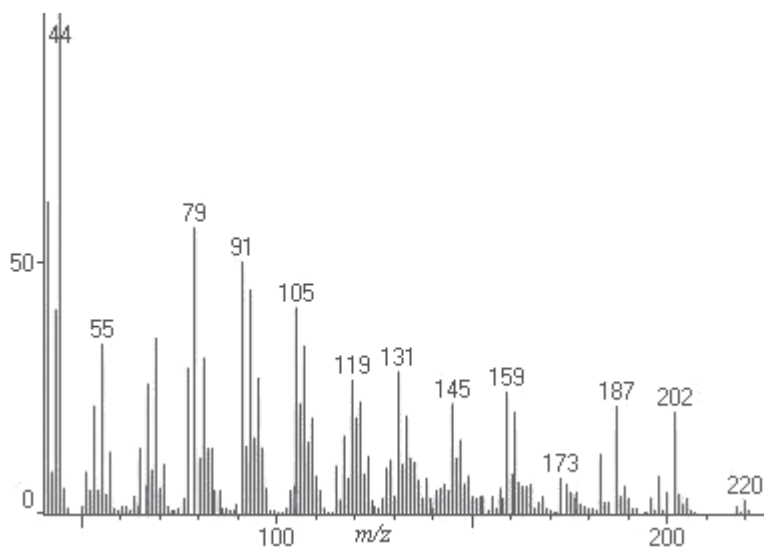


Figure S22. Mass spectrum of globulol (peak 21).

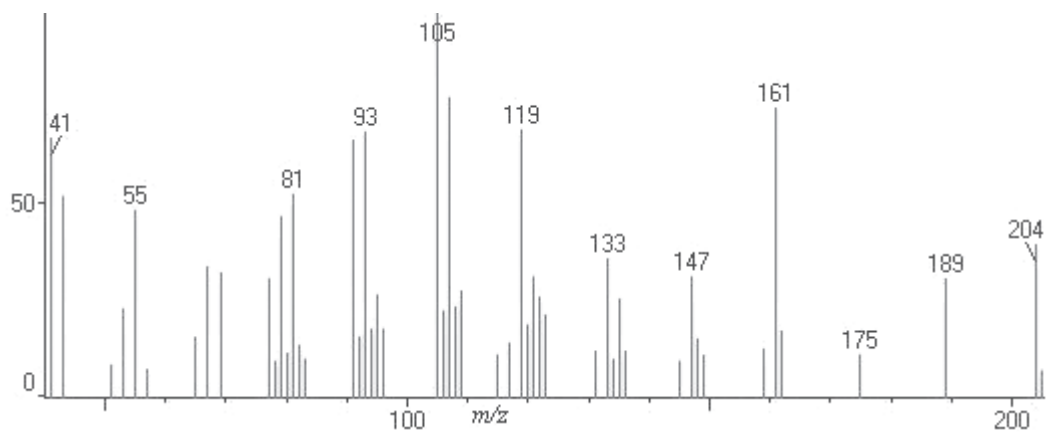


Figure S23. Mass spectrum of viridiflorol (peak 22).

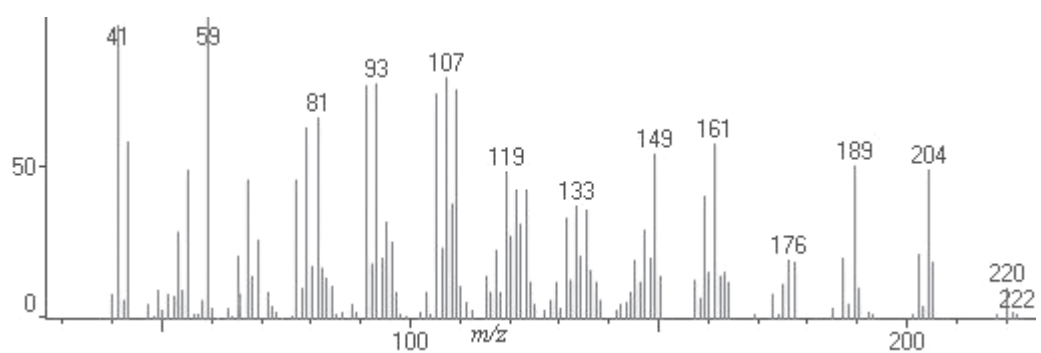


Figure S24. Mass spectrum of guaiol (peak 23).

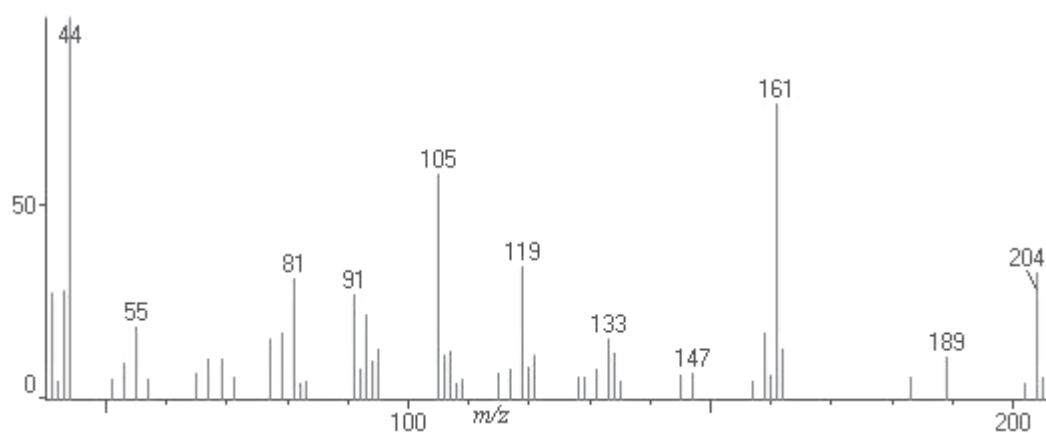


Figure S25. Mass spectrum of *epi*- α -cadinol (peak 24).

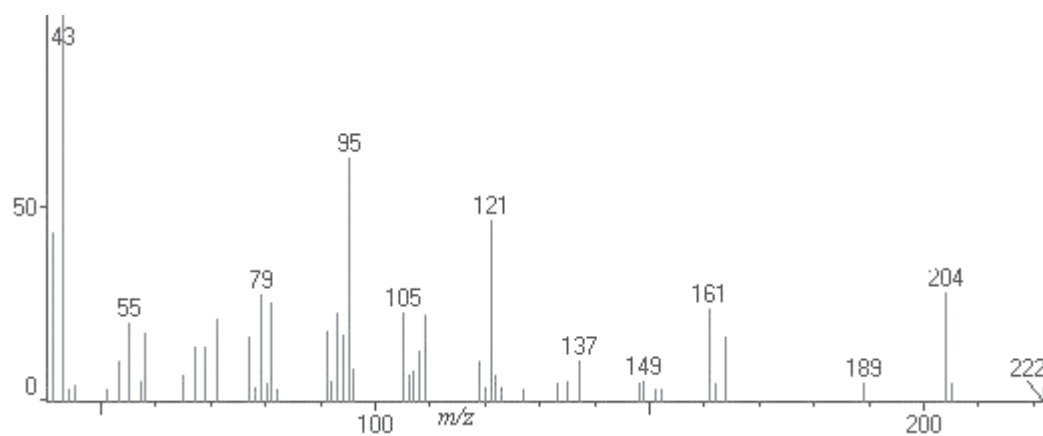


Figure S26. Mass spectrum of α -cadinol (peak 25).

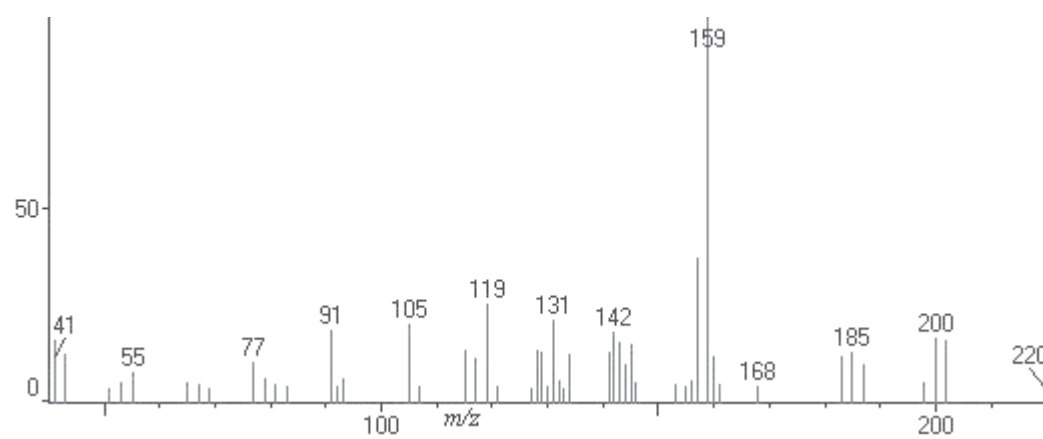


Figure S27. Mass spectrum of eudesma-4(15),7-dien-1- β -ol (peak 26).