

Probing Interchain Interactions in Emissive Blends of Poly[2-methoxy-5-(2'-ethylhexyloxy)-*p*-phenylenevinylene] with Polystyrene and Poly(styrene-*co*-2-ethylhexyl acrylate) by Fluorescence Spectroscopy

*Marcelo L. De Andrade and Teresa D. Z. Atvars**

Instituto de Química, Universidade Estadual de Campinas, CP 6154, 13084-971 Campinas-SP, Brazil

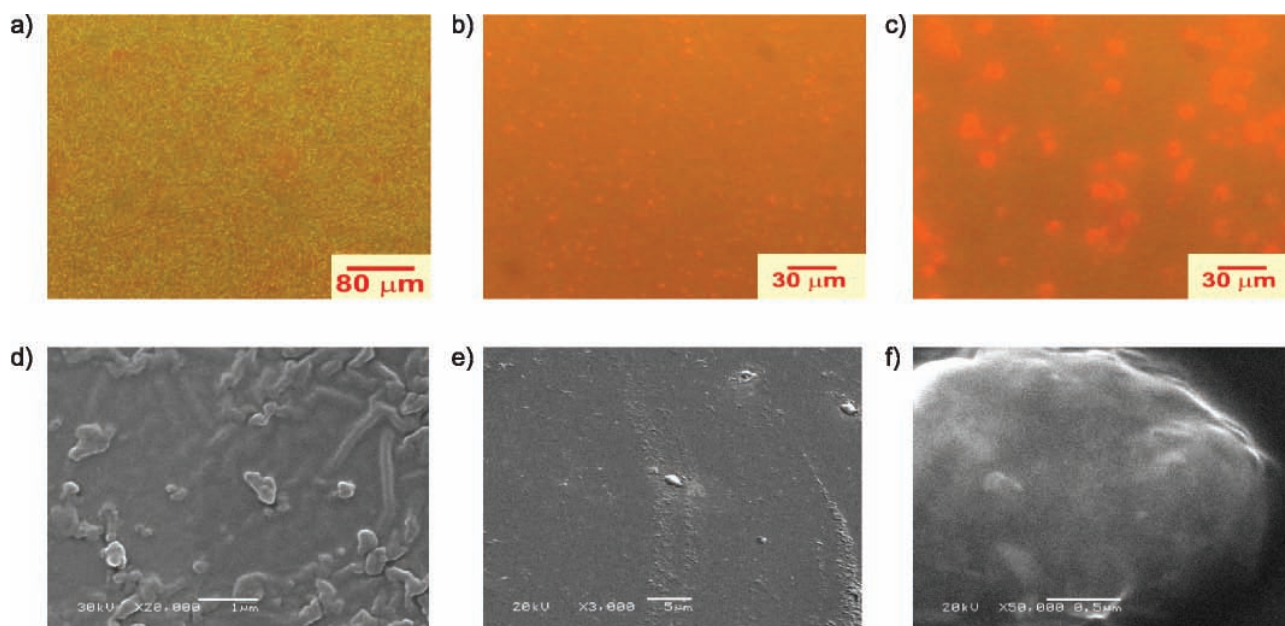


Figure S1. EFM (top) and SEM (bottom) micrographs of the spin coated blends with 0.5 wt% MEH-PPV with: (a) and (d) PS-*py*, (b) and (e) SEHAMA-*py*-9 and (c) and (f) SEHAMA-*py*-19.

*e-mail: tatvars@iqm.unicamp.br

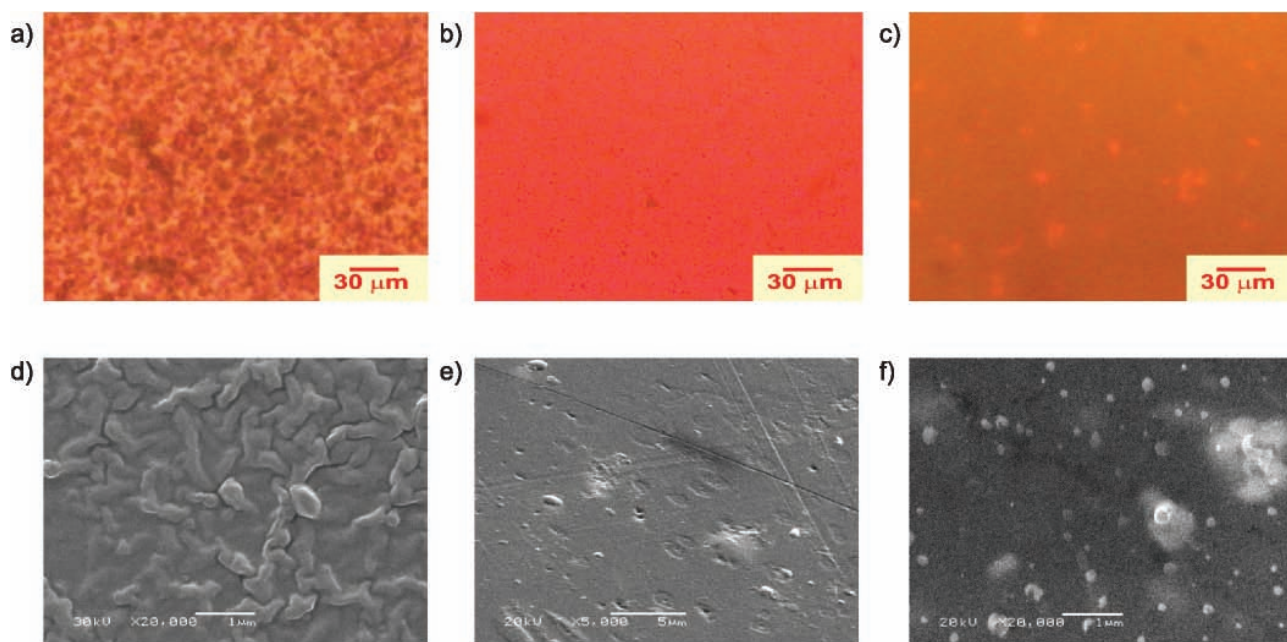


Figure S2. EFM (top) and SEM (bottom) micrographs of the spin coated blends with 1 wt% MEH-PPV with: (a) and (d) PS-*py*, (b) and (e) SEHAMA-*py*-9 and (c) and (e) SEHAMA-*py*-19.

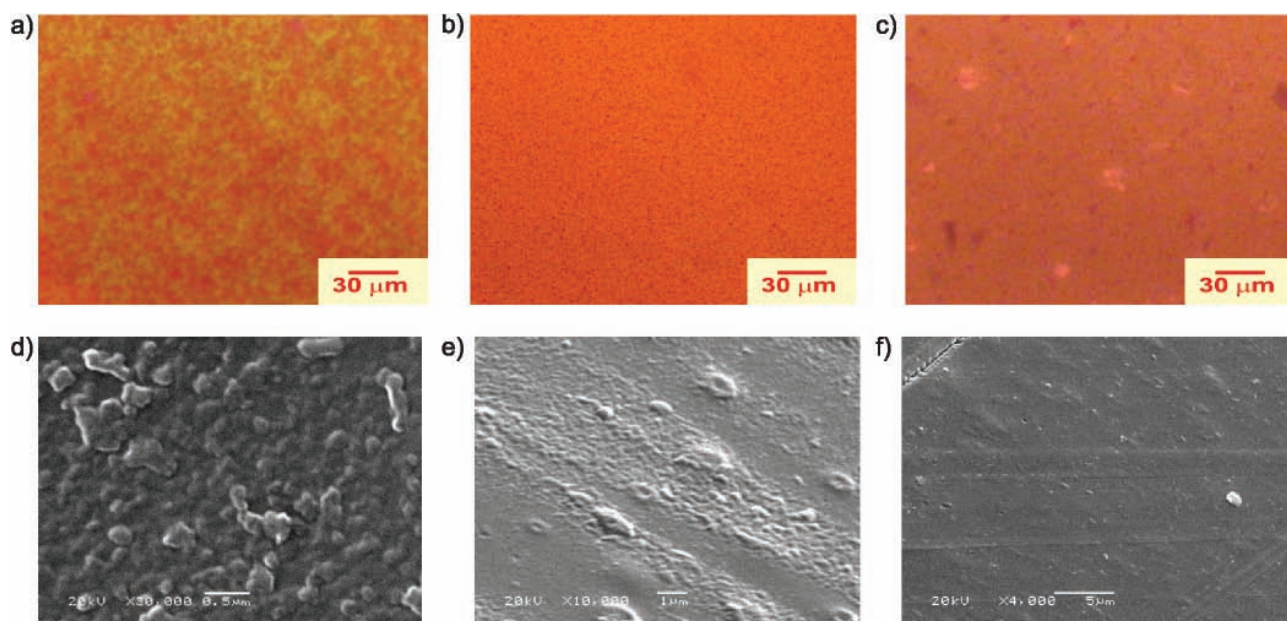


Figure S3. EFM (top) and SEM (bottom) micrographs of the spin coated blends with 5 wt% MEH-PPV with: (a) and (d) PS-*py*, (b) and (e) SEHAMA-*py*-9 and (c) and (e) SEHAMA-*py*-19.