

Graphene Oxides Coated Paper as a Substrate to Paper Spray Ionization Mass Spectrometry for Creatinine Determination in Urine Samples

Aline R. Fernandes,^a Ricardo A. Bernardo,^a Thays C. de Carvalho,^a Boniek G. Vaz^a and
Andréa R. Chaves^{ib}*,^a

^aLaboratório de Cromatografia e Espectrometria de Massas (LaCEM), Instituto de Química,
Universidade Federal de Goiás, 74690-900 Goiânia-GO, Brazil

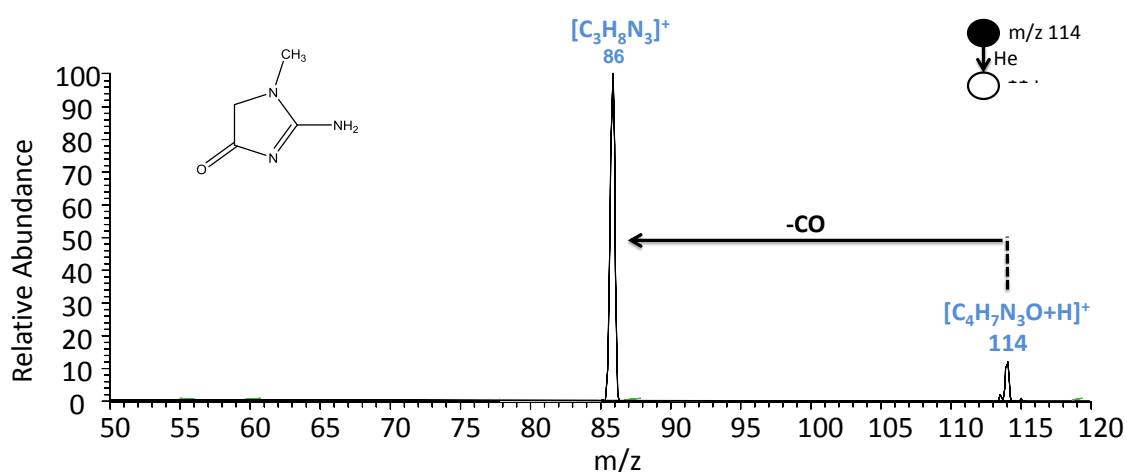


Figure S1. PSI(+)-MS/MS of creatinine $[M + H]^+$ of m/z 114.

*e-mail: andrea_chaves@ufg.br

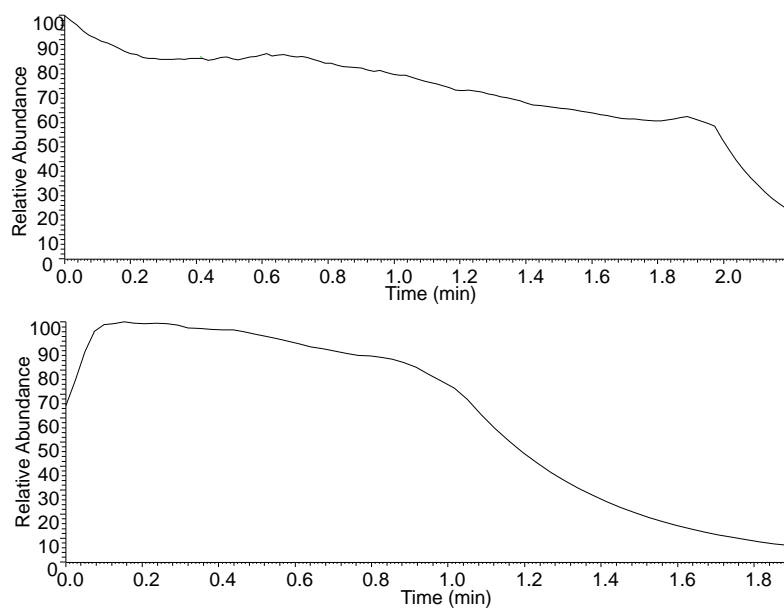


Figure S2. Total ion chromatogram of GO-modified (above) and chromatographic papers (below).

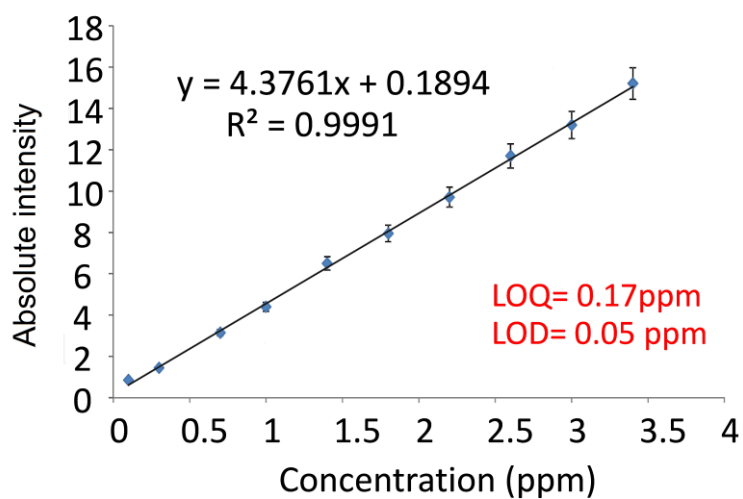


Figure S3. Calibration curve (0.1-3.4 ppm) of the m/z 86 creatinine fragment using GO-modified paper.