

Supplementary Information

Differentiation of Toxic and Non-Toxic Leaves of *Jatropha curcas* L. Genotypes by Leaf Spray Mass Spectrometry

Igor Pereira,^a Thays C. de Carvalho,^a Wanderson Romão,^b Paulo R. Filgueiras,^b
Bruno G. Laviola,^c Clenilson M. Rodrigues,^c Patrícia V. Abdelnur^c and Boniek G. Vaz^{*a}

^aInstituto de Química, Universidade Federal do Goiás, 74690-970 Goiânia-GO, Brazil

^bDepartamento de Química, Universidade Federal do Espírito Santo, 29075-910 Vitória-ES, Brazil

^cEmbrapa Agroenergia, 70770-901 Brasília-DF, Brazil

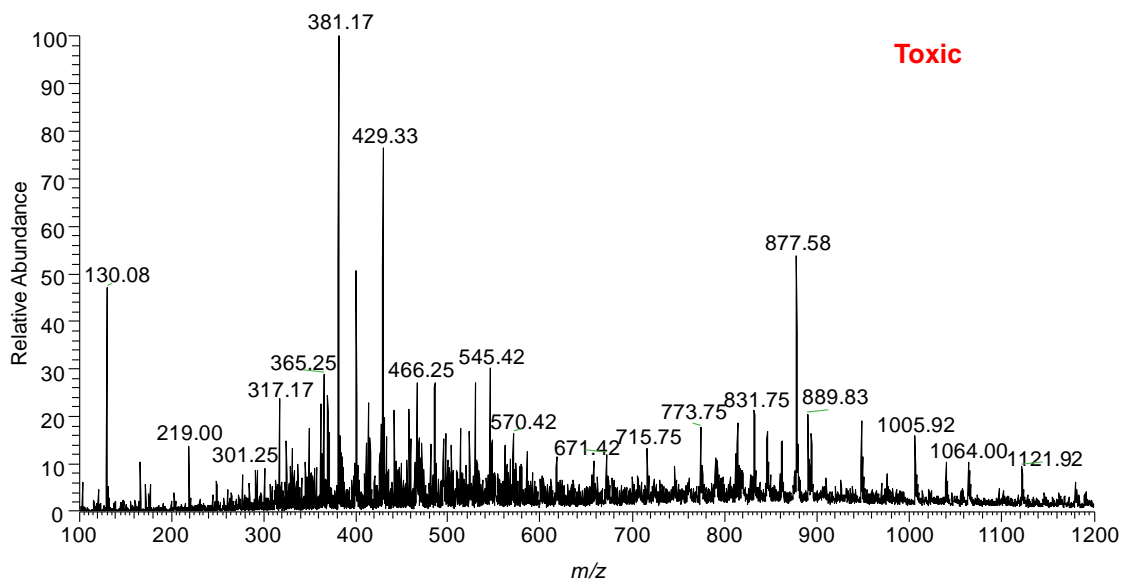


Figure S1. Some mass spectra from toxic leaves of *J. curcas* genotypes by LS(+) low resolution mass spectrometry.

*e-mail: boniek@ufg.br

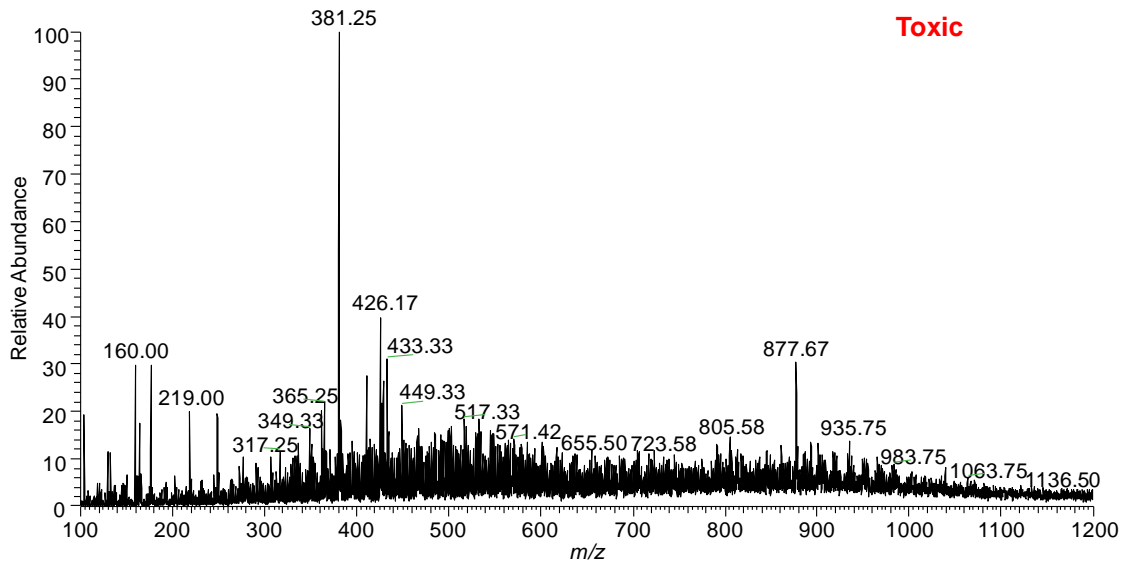
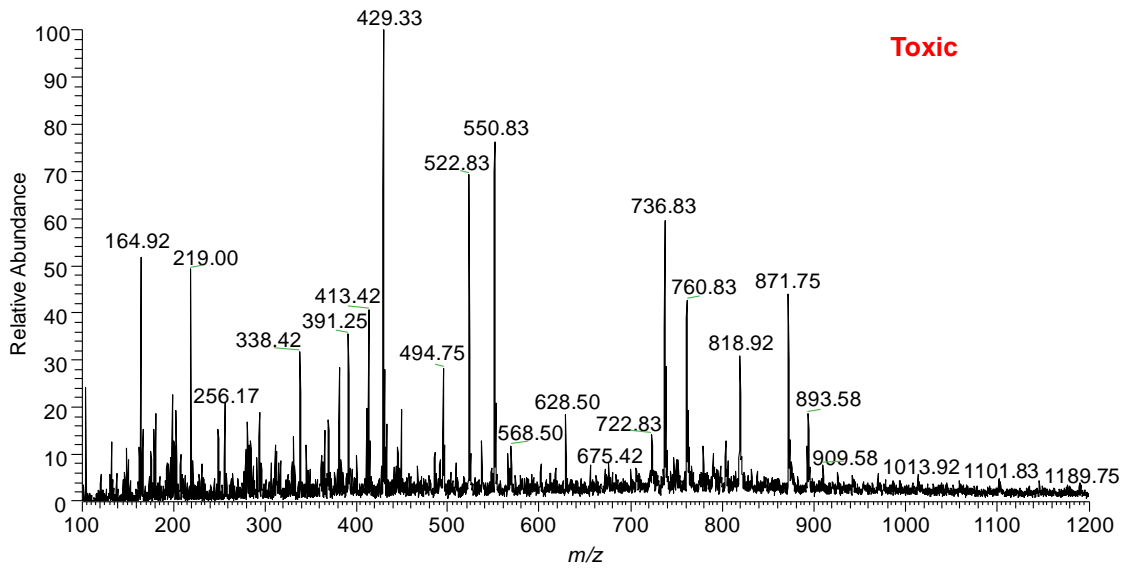
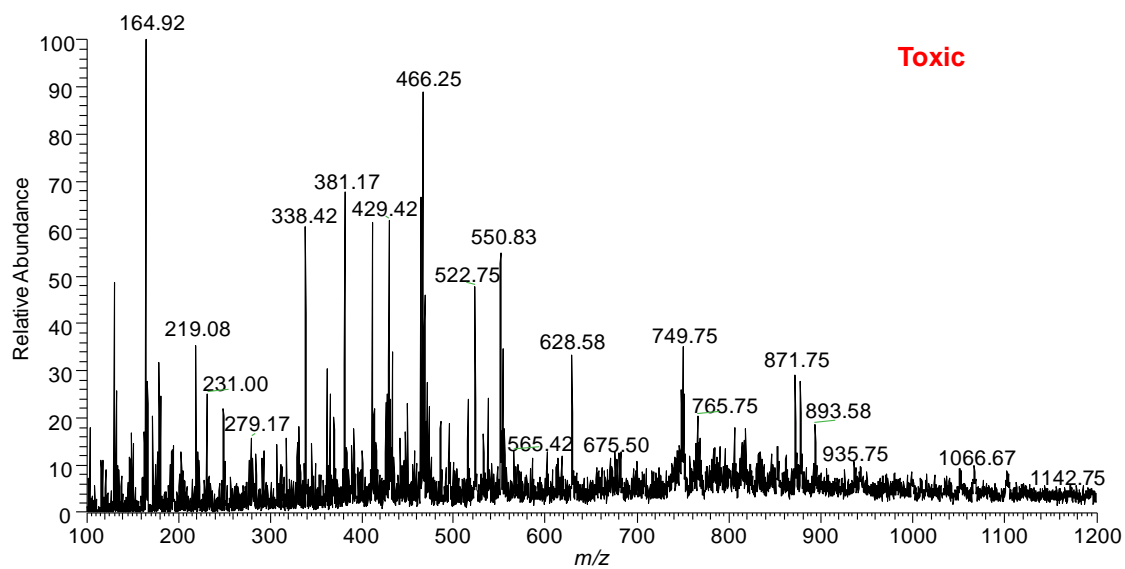


Figure S1. Some mass spectra from toxic leaves of *J. curcas* genotypes by LS(+) low resolution mass spectrometry (cont.).



3

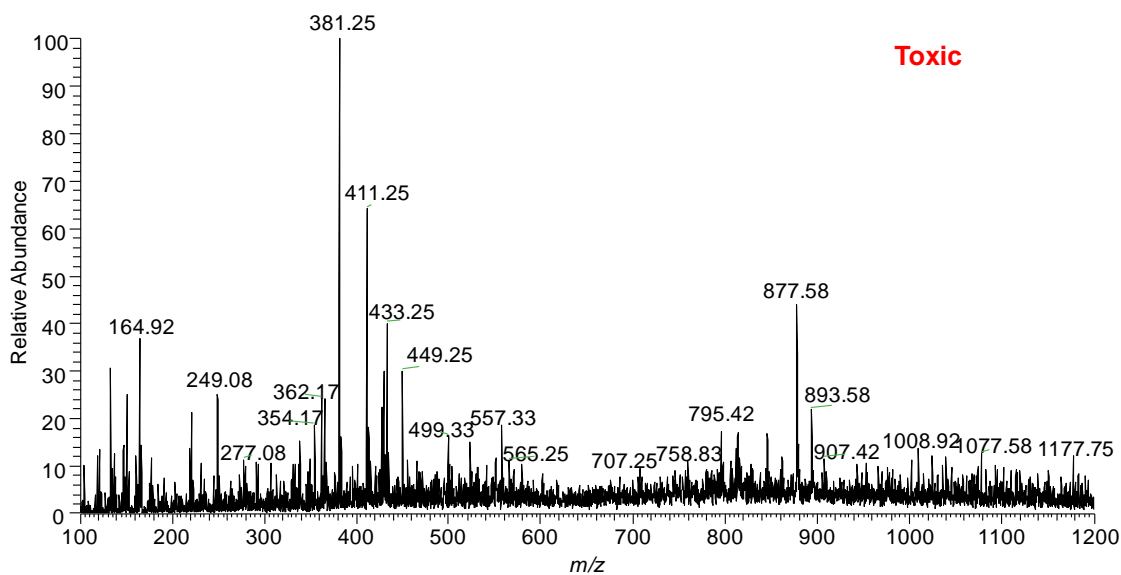


Figure S1. Some mass spectra from toxic leaves of *J. curcas* genotypes by LS(+) low resolution mass spectrometry (cont.).

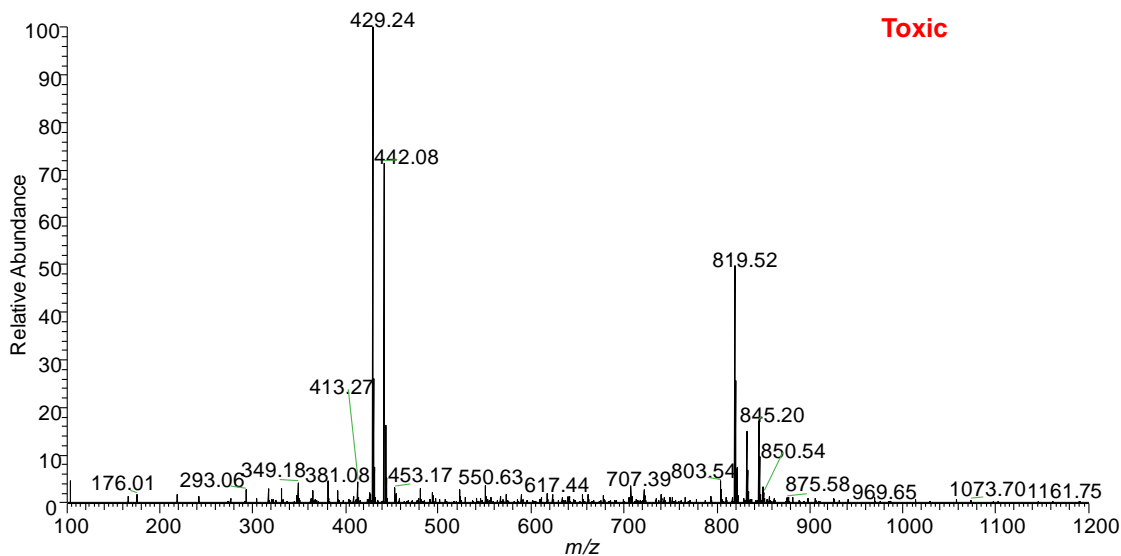
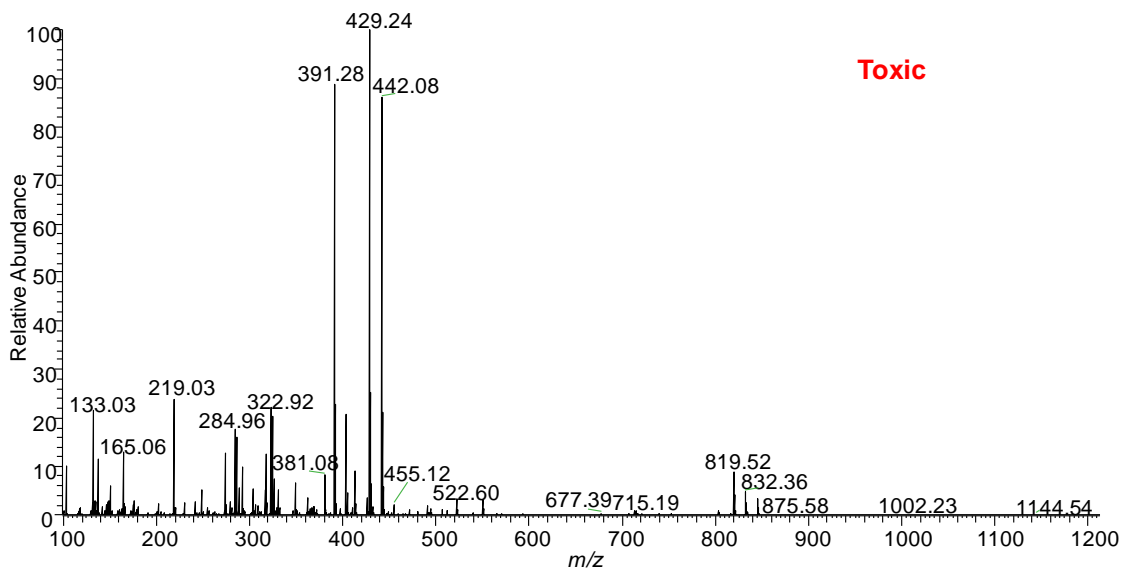


Figure S1. Some mass spectra from toxic leaves of *J. curcas* genotypes by LS(+) low resolution mass spectrometry (cont.).

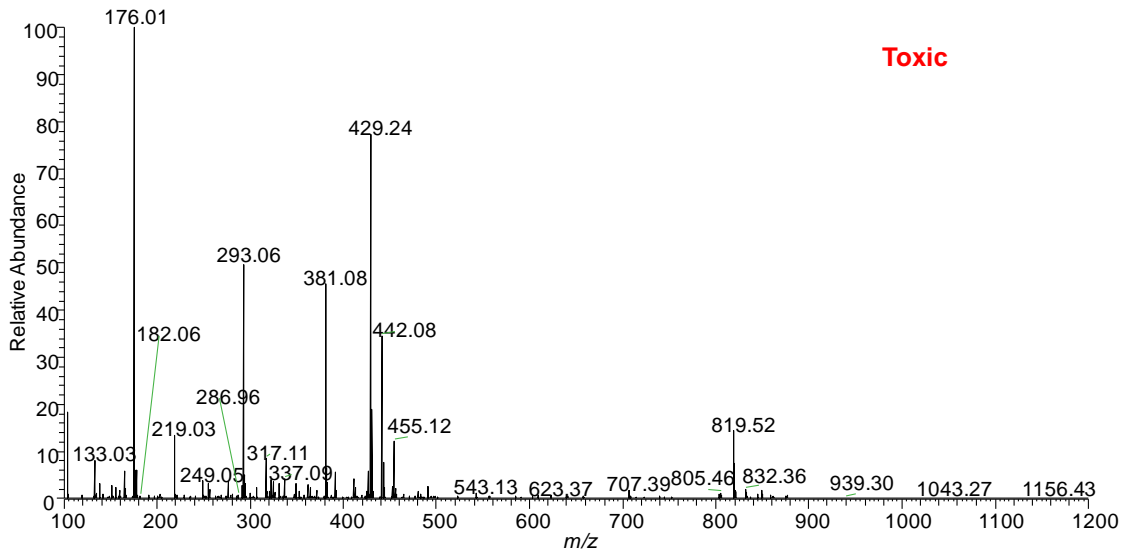


Figure S1. Some mass spectra from toxic leaves of *J. curcas* genotypes by LS(+) low resolution mass spectrometry (cont.).

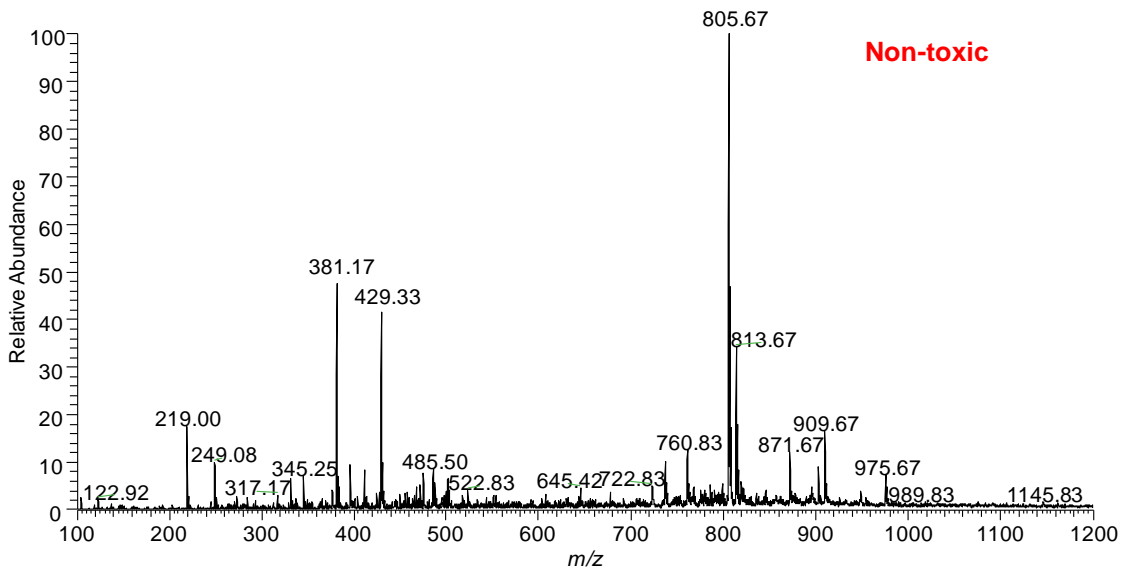


Figure S2. Some mass spectra from non-toxic leaves of *J. curcas* genotypes by LS(+) low resolution mass spectrometry.

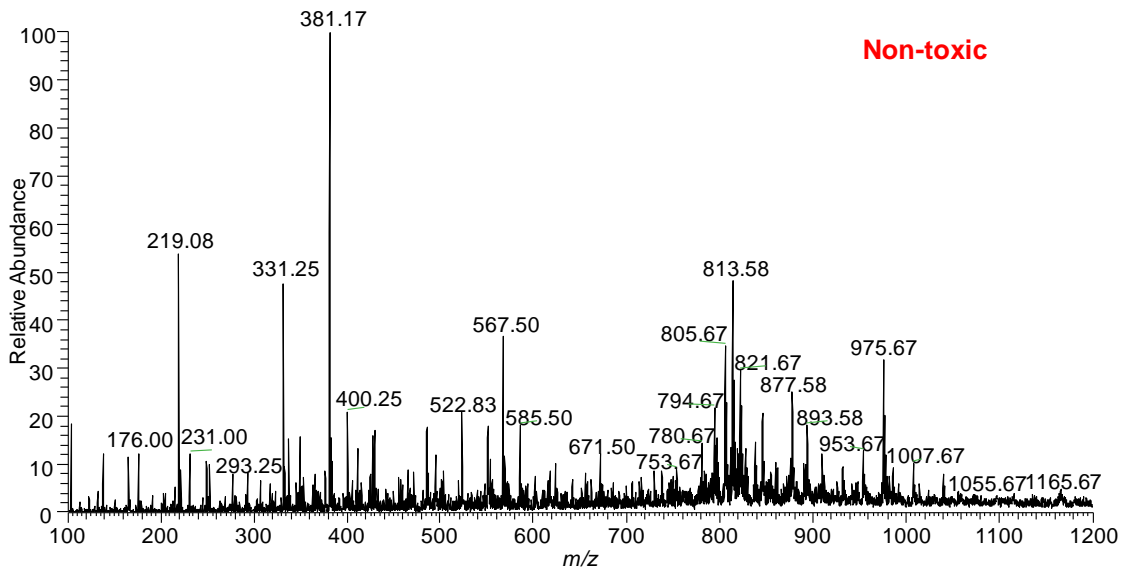
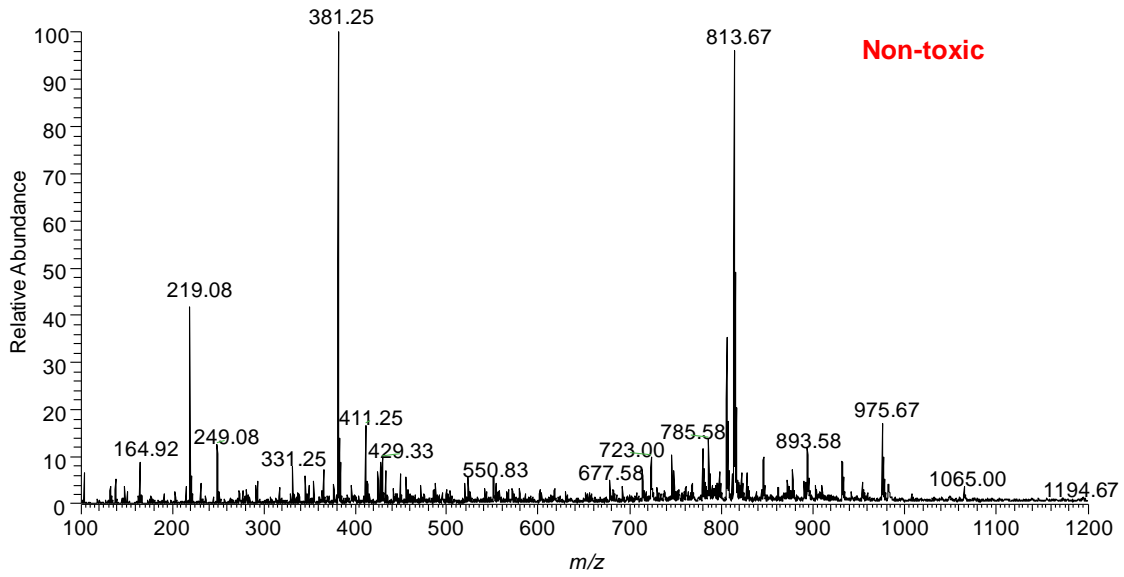


Figure S2. Some mass spectra from non-toxic leaves of *J. curcas* genotypes by LS(+) low resolution mass spectrometry (cont.).

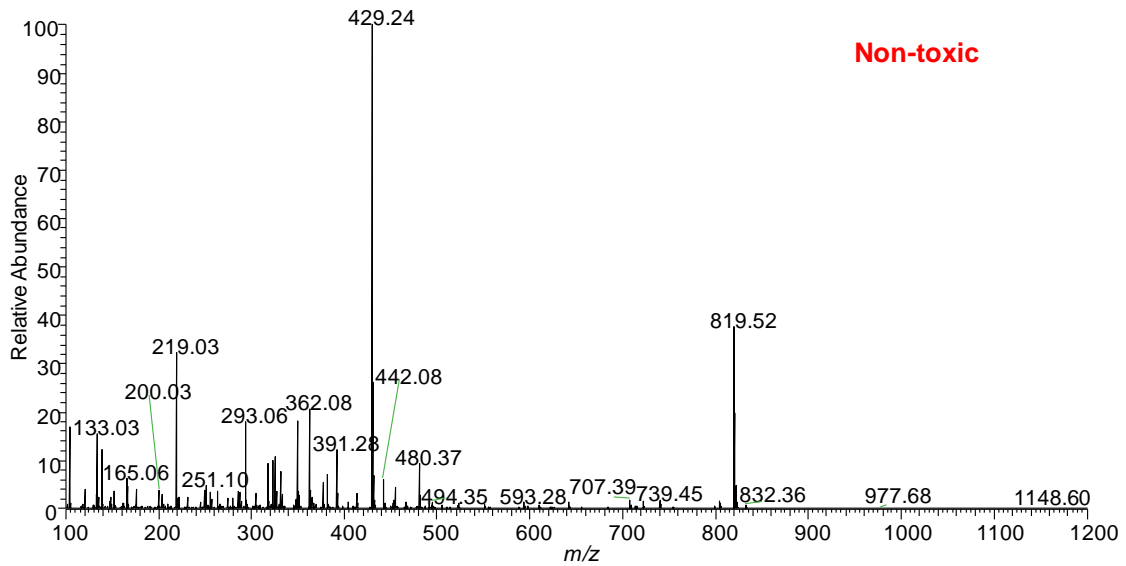
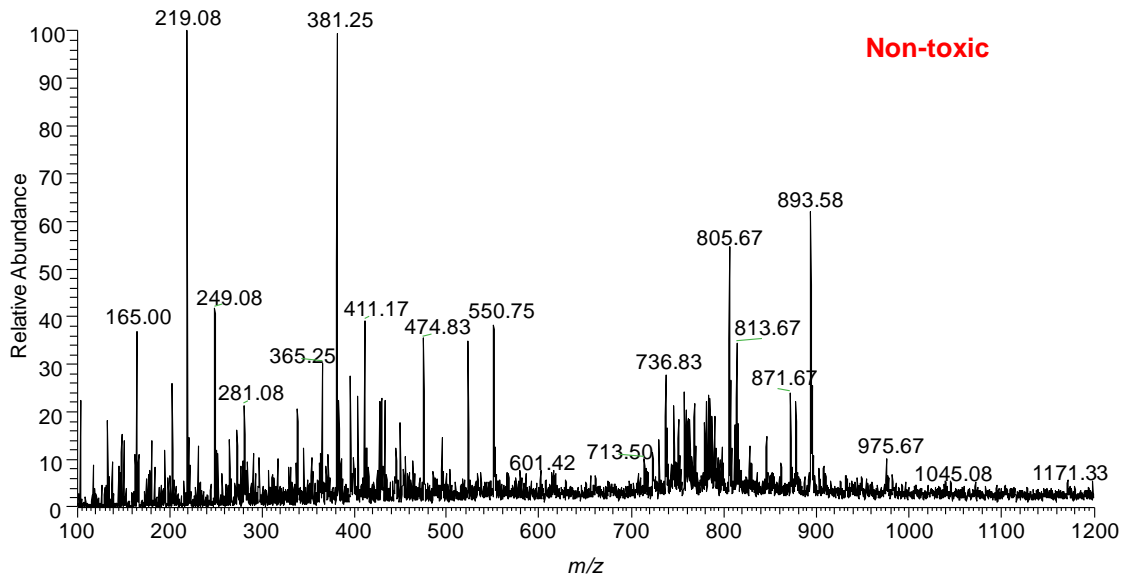


Figure S2. Some mass spectra from non-toxic leaves of *J. curcas* genotypes by LS(+) low resolution mass spectrometry (cont.).

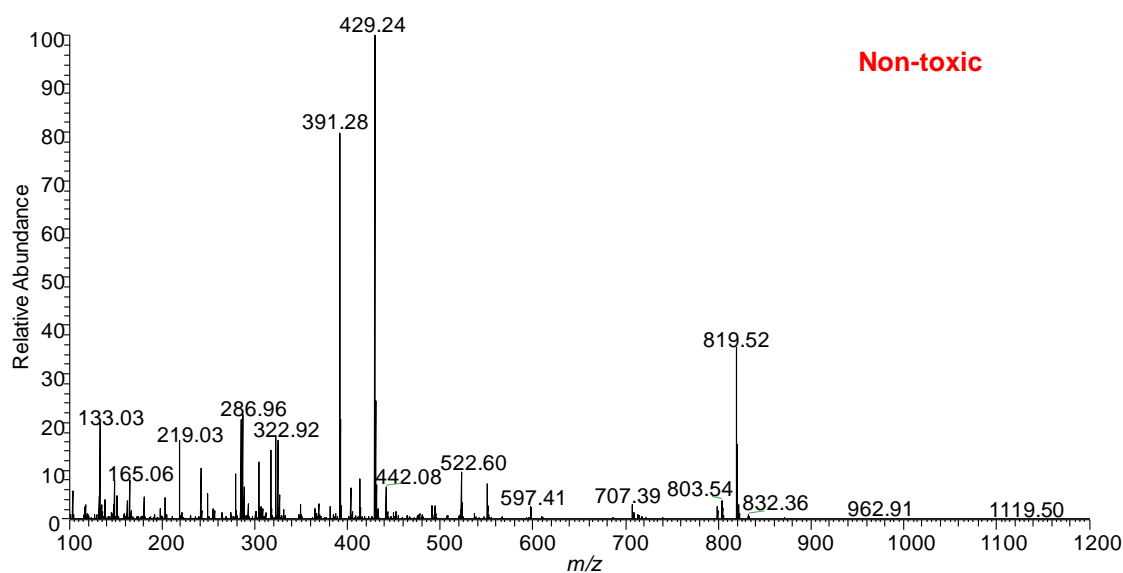
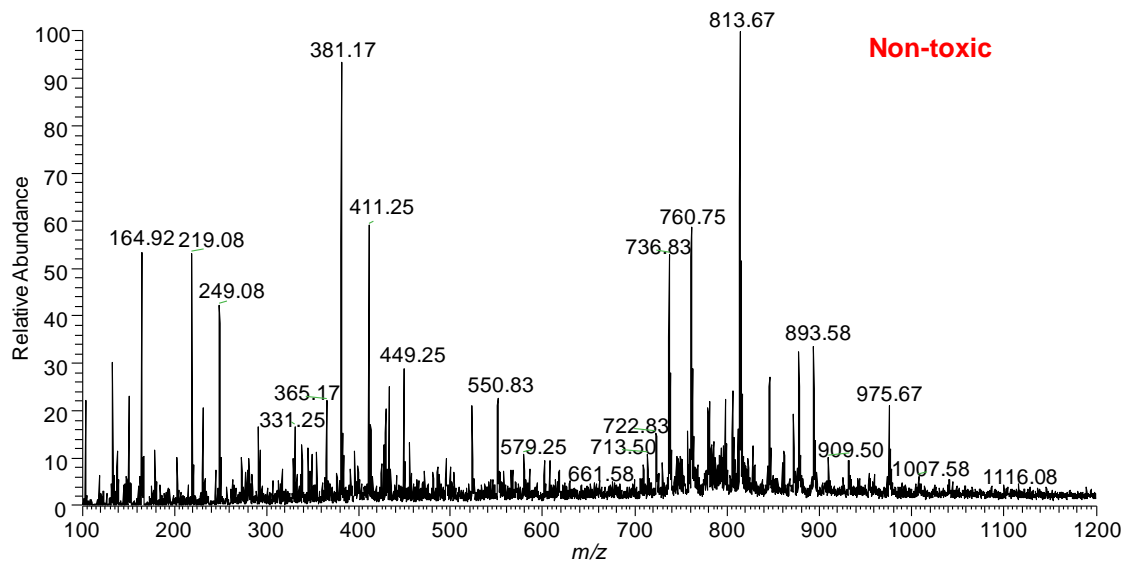


Figure S2. Some mass spectra from non-toxic leaves of *J. curcas* genotypes by LS(+) low resolution mass spectrometry (cont.).

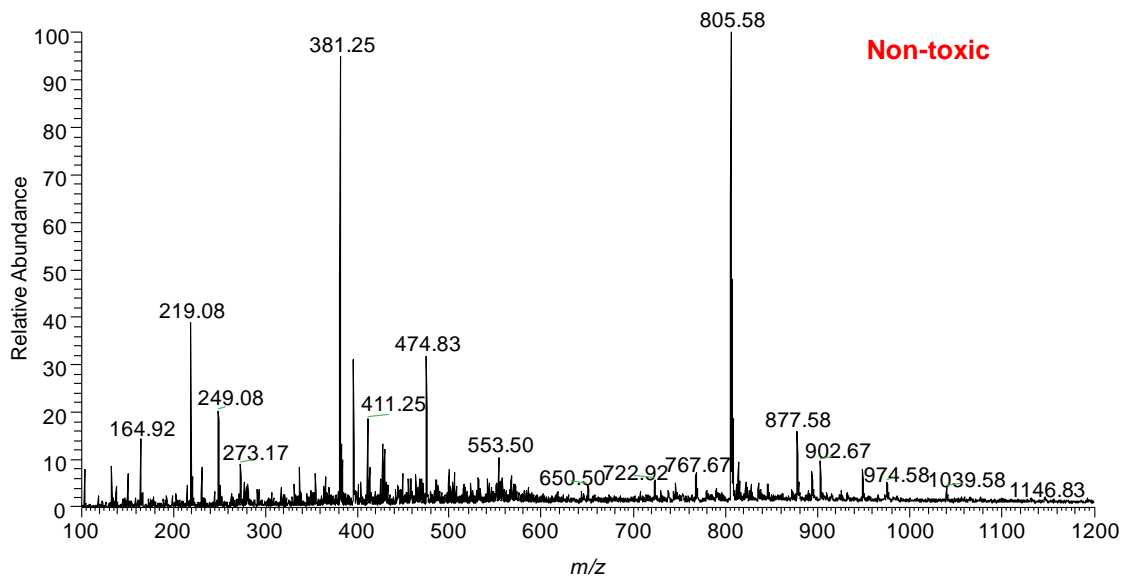


Figure S2. Some mass spectra from non-toxic leaves of *J. curcas* genotypes by LS(+) low resolution mass spectrometry (cont.).

Table S1. *m/z* ratios more important to discriminate between toxic and non-toxic leaves identified by the PLS-DA model

No. ^a	Toxic	No.	Toxic	No.	Non-toxic
1	199.83	26	464.92	49	138.00
2	199.92	27	505.08	50	138.08
3	200.00	28	505.17	51	138.17
4	200.08	29	505.25	52	138.25
5	200.17	30	568.42	53	779.50
6	361.67	31	568.50	54	779.58
7	361.75	32	570.00	55	779.67
8	361.83	33	570.08	56	805.33
9	361.92	34	570.17	57	805.42
10	362.00	35	570,25	58	805.50
11	362.08	36	570.33	59	805.58
12	362.17	37	570.42	60	805.67
13	362.25	38	570.50	61	805.75
14	362.33	39	570.58	62	805.83
15	362.42	40	570.67	63	805.92
16	362.50	41	623.00	64	806.25
17	362.58	42	736.58	65	806.33
18	363.00	43	736.67	66	806.42
19	363.08	44	736.75	67	806.50
20	363.92	45	736.83	68	806.58
21	364.00	46	1057.83	69	806.67
22	364.08	47	1057.92	70	806.75
23	364.17	48	1189.75	71	807.50
24	364.25			72	807.58
25	364.33			73	807.67

^avariable number.