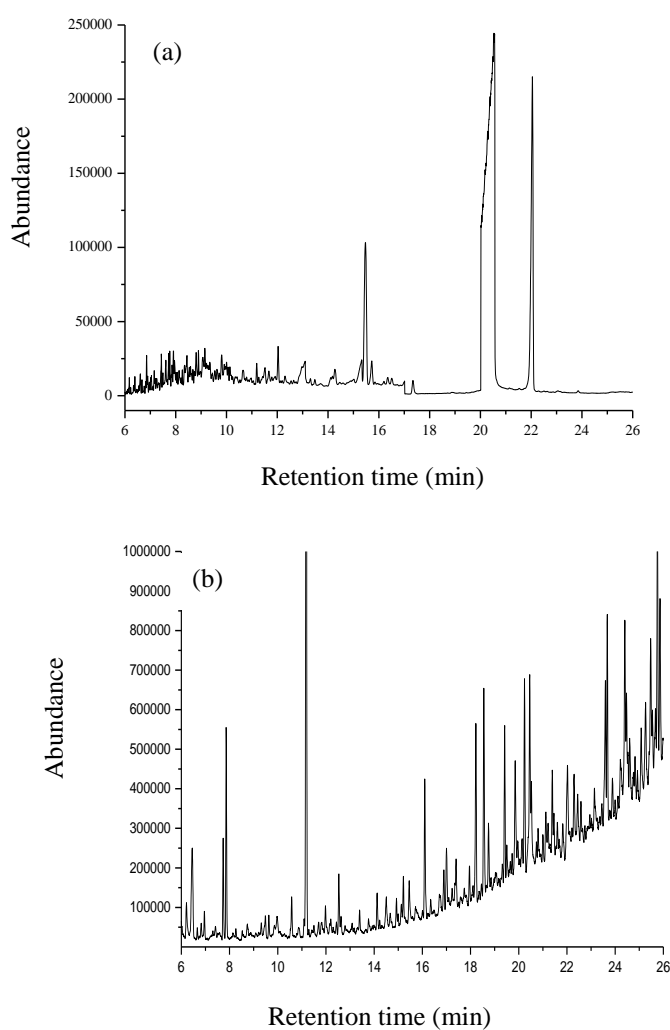


## Supplementary Information

### Solid-Liquid Extraction with Low Temperature Purification Coupled with Gas Chromatography and Mass Spectrometry for Determination of Polychlorinated Biphenyls in Sewage Sludge

*Mariana R. Maia, Ana Luíza P. Arcanjo, Gevany P. Pinho\* and Flaviano O. Silvério*

*Instituto de Ciências Agrárias, Universidade Federal de Minas Gerais, Avenida Universitária, 1000, 39404-547 Montes Claros-MG, Brazil*



**Figure S1.** Total ion chromatograms of sludge extracts obtained by (a) ultrasound, method 3550C; (b) Soxhlet, method 3540C.

\*e-mail: gevanyp@ufmg.br